



**FOR LEASE**

**7319 BEVERLY BLVD.**

BEVERLY BOULEVARD MULTI-LEVEL CREATIVE OFFICE SPACES WITH COURTYARD





**7319 BEVERLY BLVD.  
LOS ANGELES, CA 90036  
UNIT #7**

## **USE**

**CREATIVE OFFICE LEASE  
WITH COURTYARD**

## **SIZE**

**1,437 SF**

## **PRICE**

**\$5,000 / Month  
Full Service Gross**

## **PARKING**

**VALET PARKING COMPANY  
DIRECTLY BEHIND PROPERTY**

**\*POP-UP / SHORT TERM  
OPPORTUNITIES AVAILABLE\***

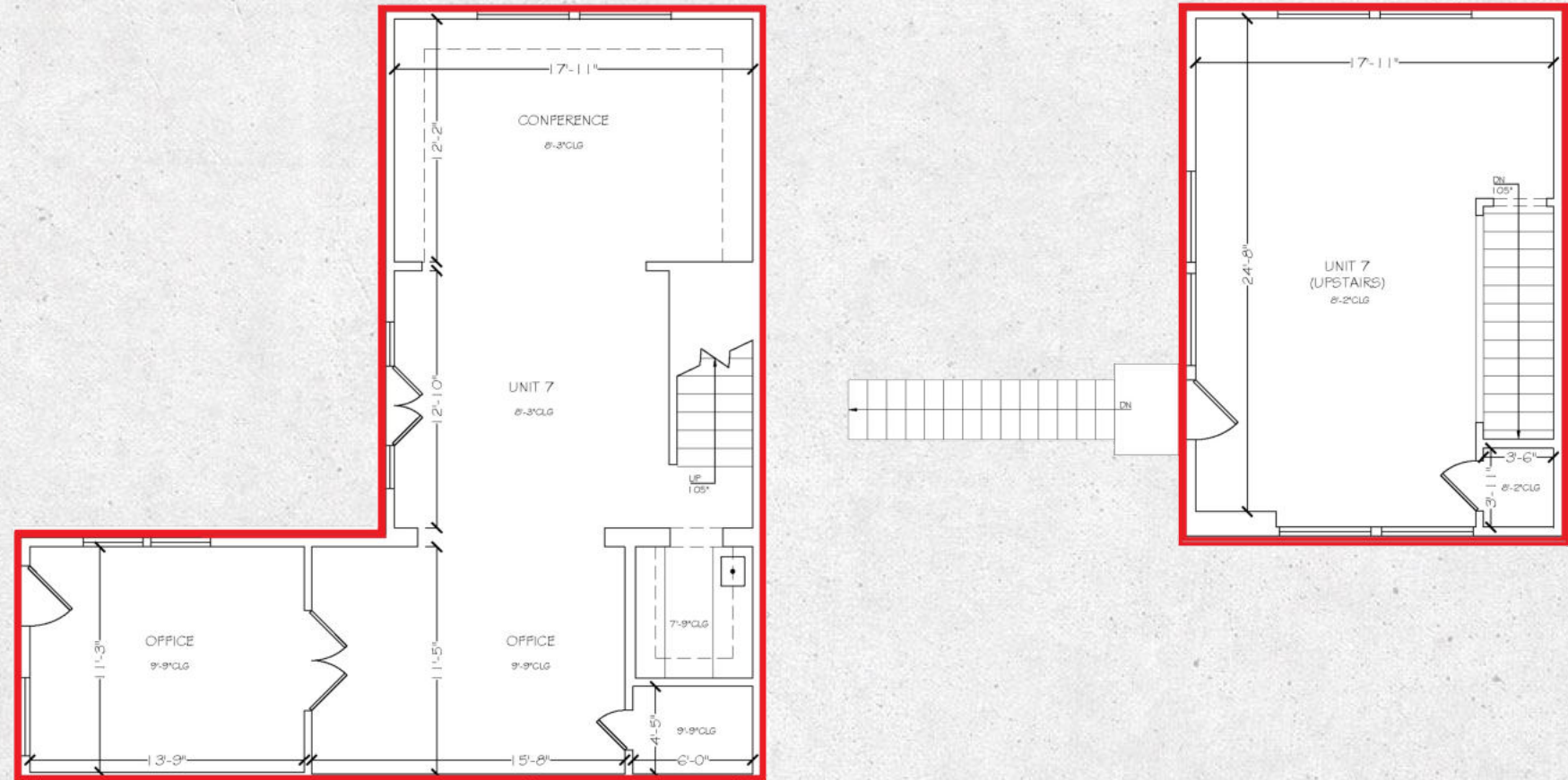
# FLOOR PLAN

## SIZE

APPROX. 1,437 SF

## ABOUT

- MULTI-LEVEL OFFICE SPACE WITH CONFERENCE ROOM
- ACCESS TO SHARED COURTYARD
- PARKING AVAILABLE VIA A VALET PARKING COMPANY DIRECTLY BEHIND THE PROPERTY







7319 BEVERLY BLVD.



















MELROSE AVE.



FAIRFAX AVE



LA BREA AVE.

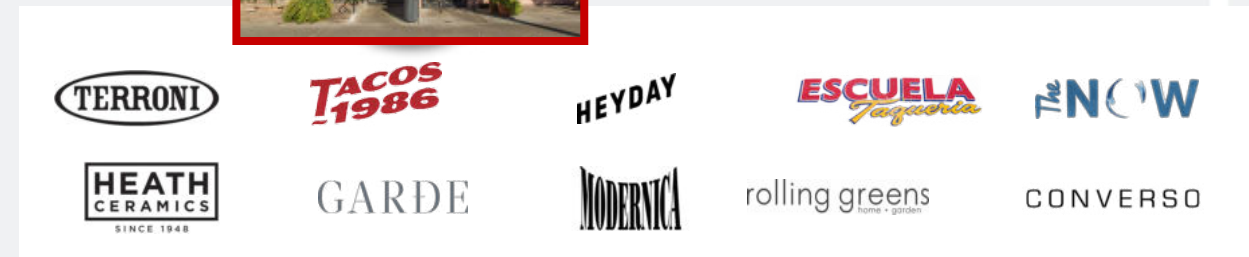
HIGHLAND AVE.



LARCHMONT BLVD.



BEVERLY BLVD.



W. 3RD STREET







# CONTACT

# US

## **STEVE RAVAN**

Tel. 323.782.1262

[steveravan@southparkgroup.com](mailto:steveravan@southparkgroup.com)

No. 01747222

## **SAM MINASIAN**

Tel. 323.782.1261

[samminasian@southparkgroup.com](mailto:samminasian@southparkgroup.com)

No. 01212823

## **MANE AJARYAN**

Tel. 818.523.4997

[mane@southparkgroup.com](mailto:mane@southparkgroup.com)

No. 02099173