

PROPERTY FOR SALE

Westshore Business District



[Click image to view article](#)

Planned Mixed-Use Development

Executive Dr
Subject Prop
1.12 AC

New Direct-Access Lanes



DOHRING AHERN
APPRAISAL | BROKERAGE

5540 Executive Dr., Tampa, FL 33609

5540 Executive Drive, Tampa, FL 33609

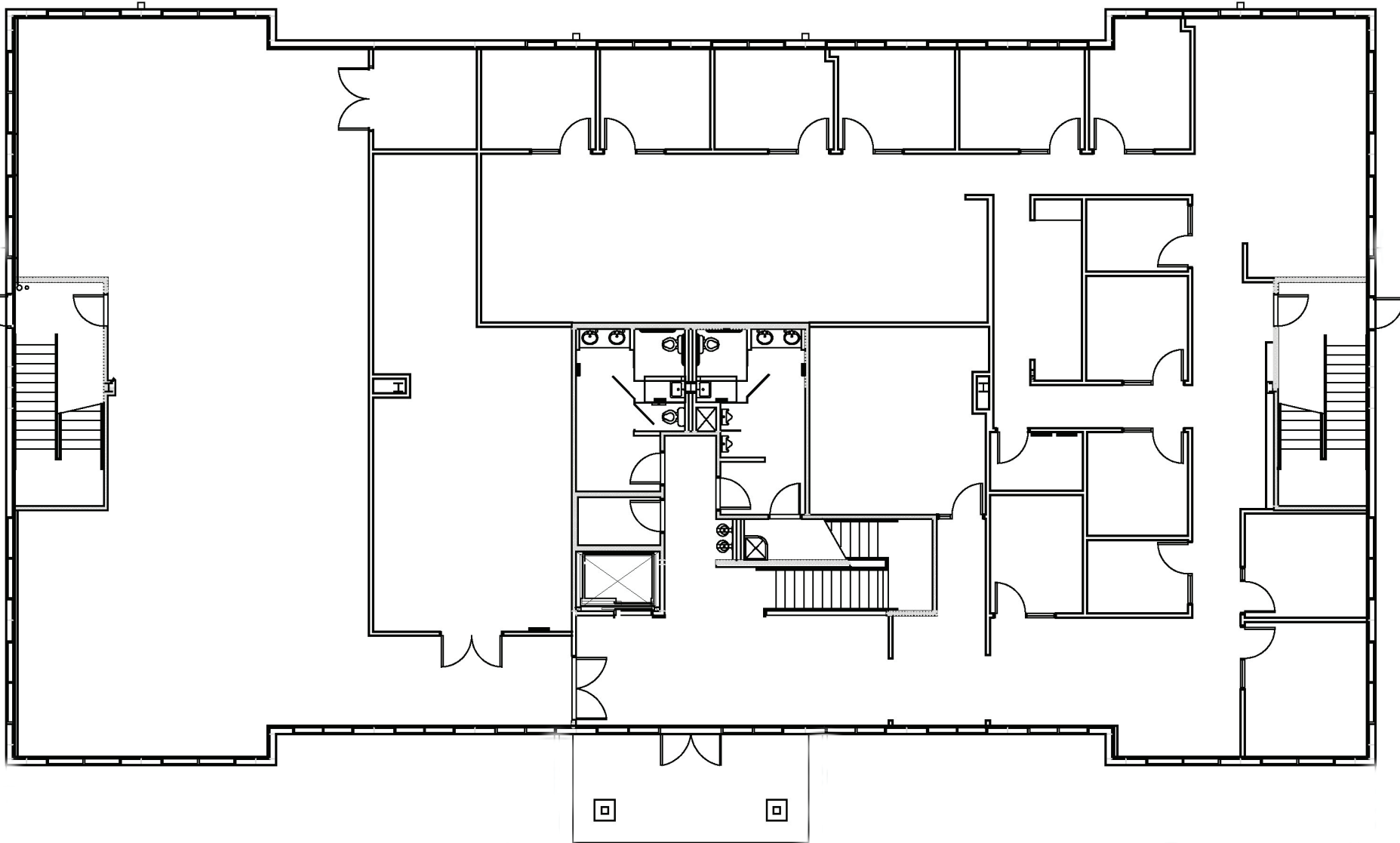
- Sales Price \$6,900,000
- Land Size 1.12 Acres
- Building is 19,006 SF
- 5/1,000sf overall parking ratio
- Prominent Westshore location
- Ideal for Owner/User; or redevelopment
- Allowable uses ([Click Here to View](#))
- Signage visible from I-275
- Direct access to I-275 on/off ramp
- I-275 Construction Plans ([Click Here to View](#))



Abbey Ahern
Principal, Brokerage
813.416.7155
Abbey@DohringAhern.com

1ST FLOOR PLANS

Occupied 1st Floor - 8,359 RSF



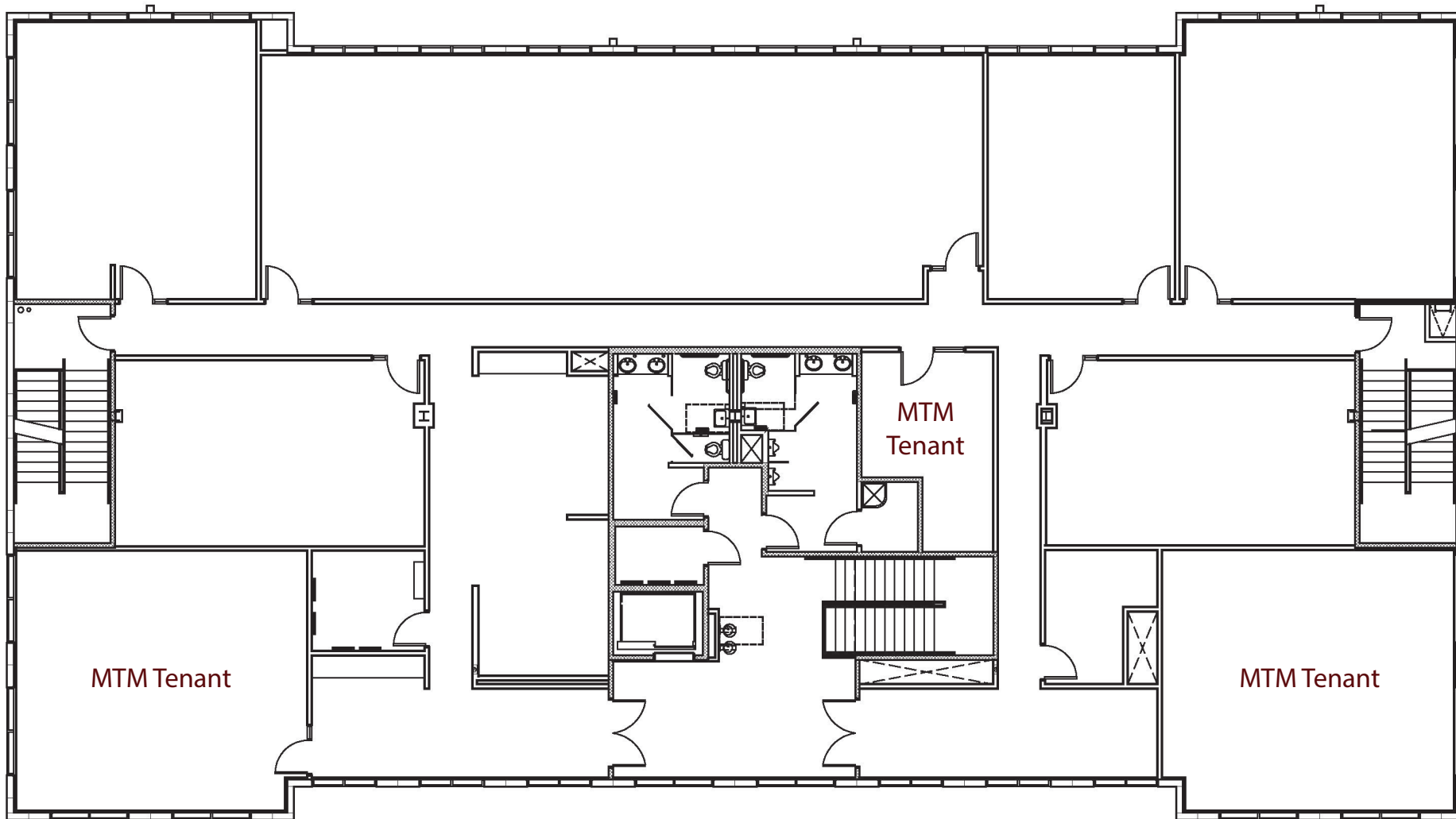
5540 Executive Drive, Tampa, FL 33609

Abbey Ahern
Principal, Brokerage
813.416.7155
Abbey@DohringAhern.com



2ND FLOOR PLANS

2nd Floor - 8,657 RSF

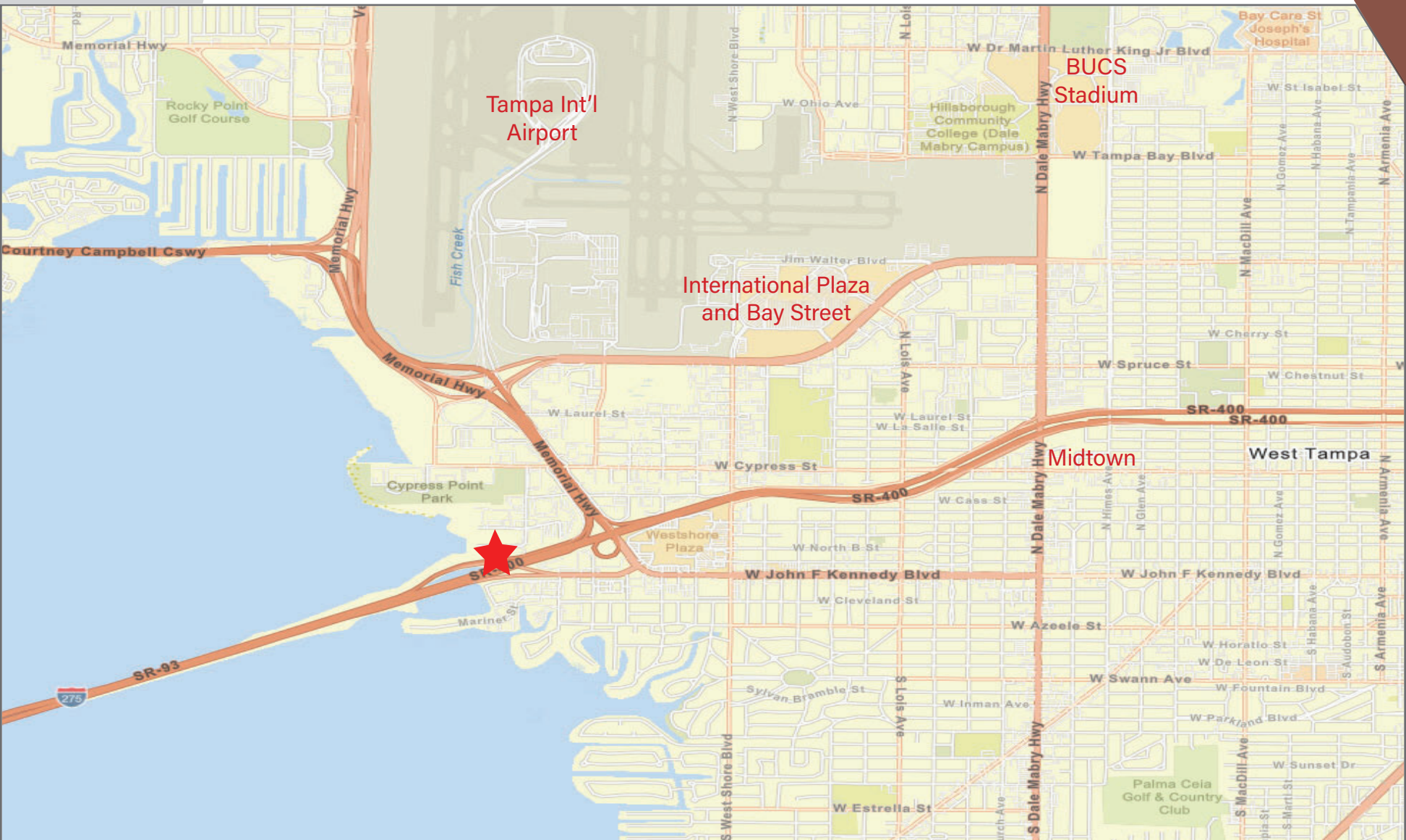


5540 Executive Drive, Tampa, FL 33609

Abbey Ahern
Principal, Brokerage
813.416.7155
Abbey@DohringAhern.com



MAP



5540 Executive Drive, Tampa, FL 33609

Abbey Ahern
Principal, Brokerage
813.416.7155
Abbey@DohringAhern.com



5540 Executive Drive, Tampa, FL 33609



Abbey Ahern
Principal, Brokerage
813.416.7155
Abbey@DohringAhern.com

5540 Executive Drive, Tampa, FL 33609



Abbey Ahern
Principal, Brokerage
813.416.7155
Abbey@DohringAhern.com