



HIGHLY FUNCTIONAL & FLEXIBLE OFFICE WITH MOUNTAIN VIEWS

5819 Lockheed Avenue
Loveland, CO

Offering Highlights

- 11,200 square feet
- Individual offices and open flex space
- Ample parking
- Elevator
- GROSS rent



Rhett Strom

Partner | Commercial Broker

970.692.4454 Mobile
rstrom@thegroupinc.com
www.TheGroupInc.com



TheGroup

The information listed above has been obtained from sources we believe to be reliable, however, we accept no responsibility for its accuracy. 12.3.24.



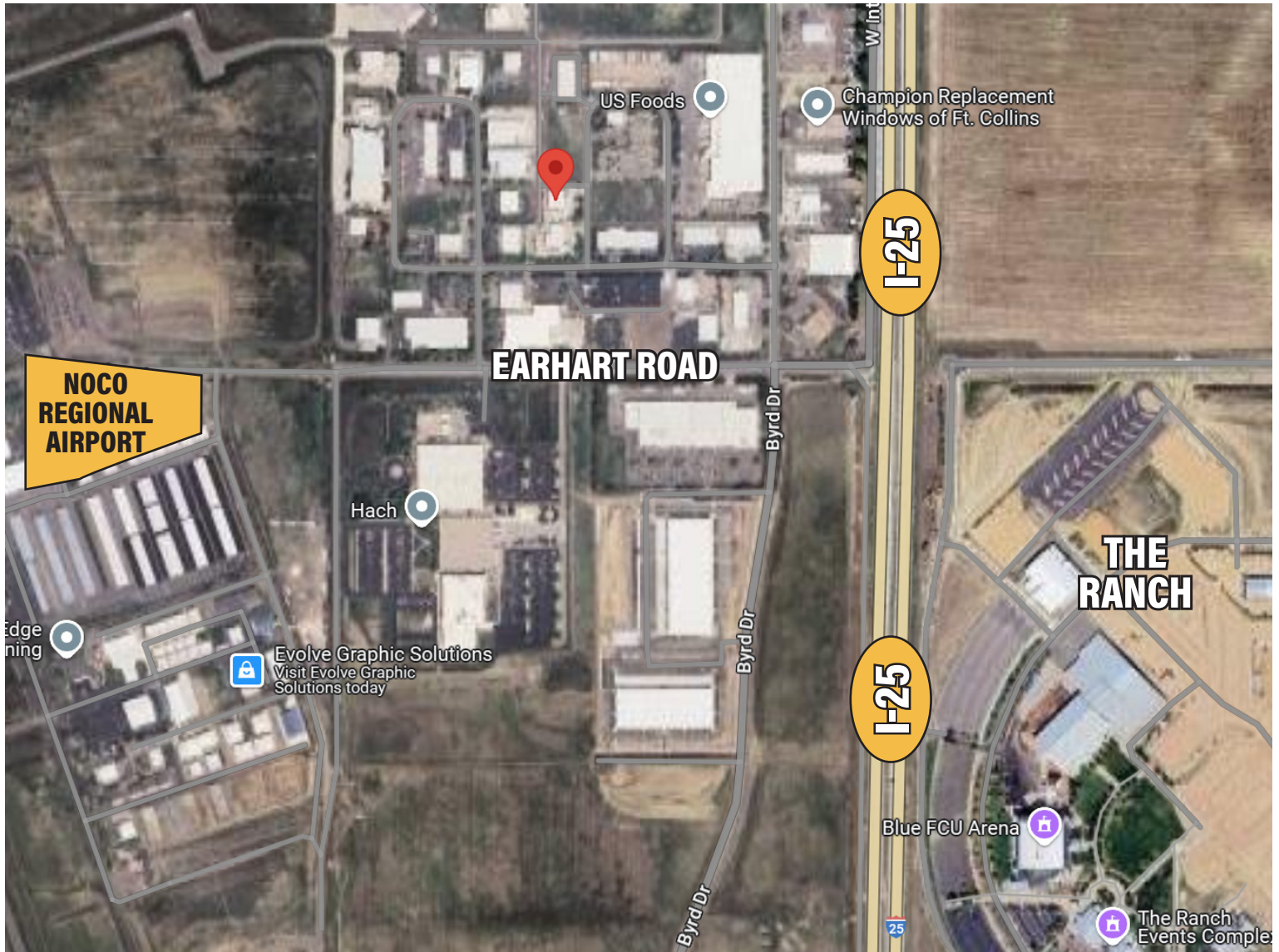
Sublease Overview

- Rent: \$18.00 per square foot GROSS
- Private offices: 10-11
- Large conference room
- Outside deck
- Covenants: None
- Location: Central Loveland
- 2 kitchens with break rooms



HIGHLY FUNCTIONAL & FLEXIBLE OFFICE WITH MOUNTAIN VIEWS

5819 Lockheed Avenue | Loveland, CO



HIGHLY FUNCTIONAL & FLEXIBLE OFFICE WITH MOUNTAIN VIEWS

5819 Lockheed Avenue | Loveland, CO

