

CBRE

I-5 SERVICE SHOP AND YARD

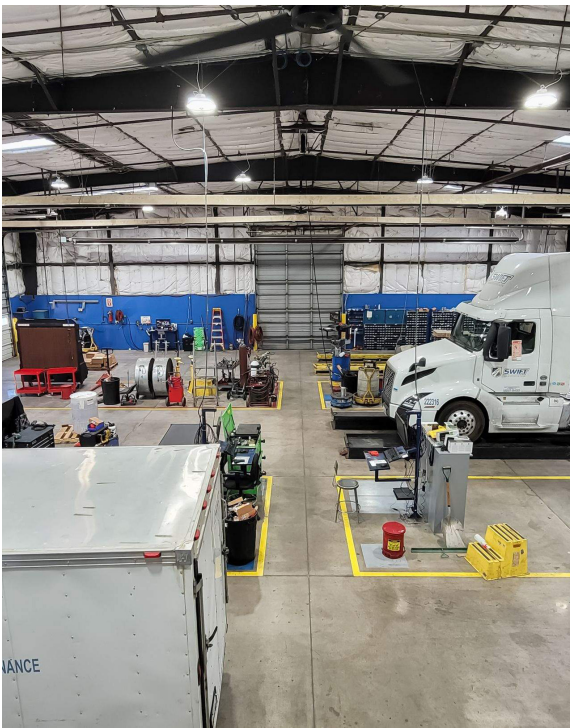
1475 COUNTY ROAD 99 WEST
WILLOWS, CA 95988



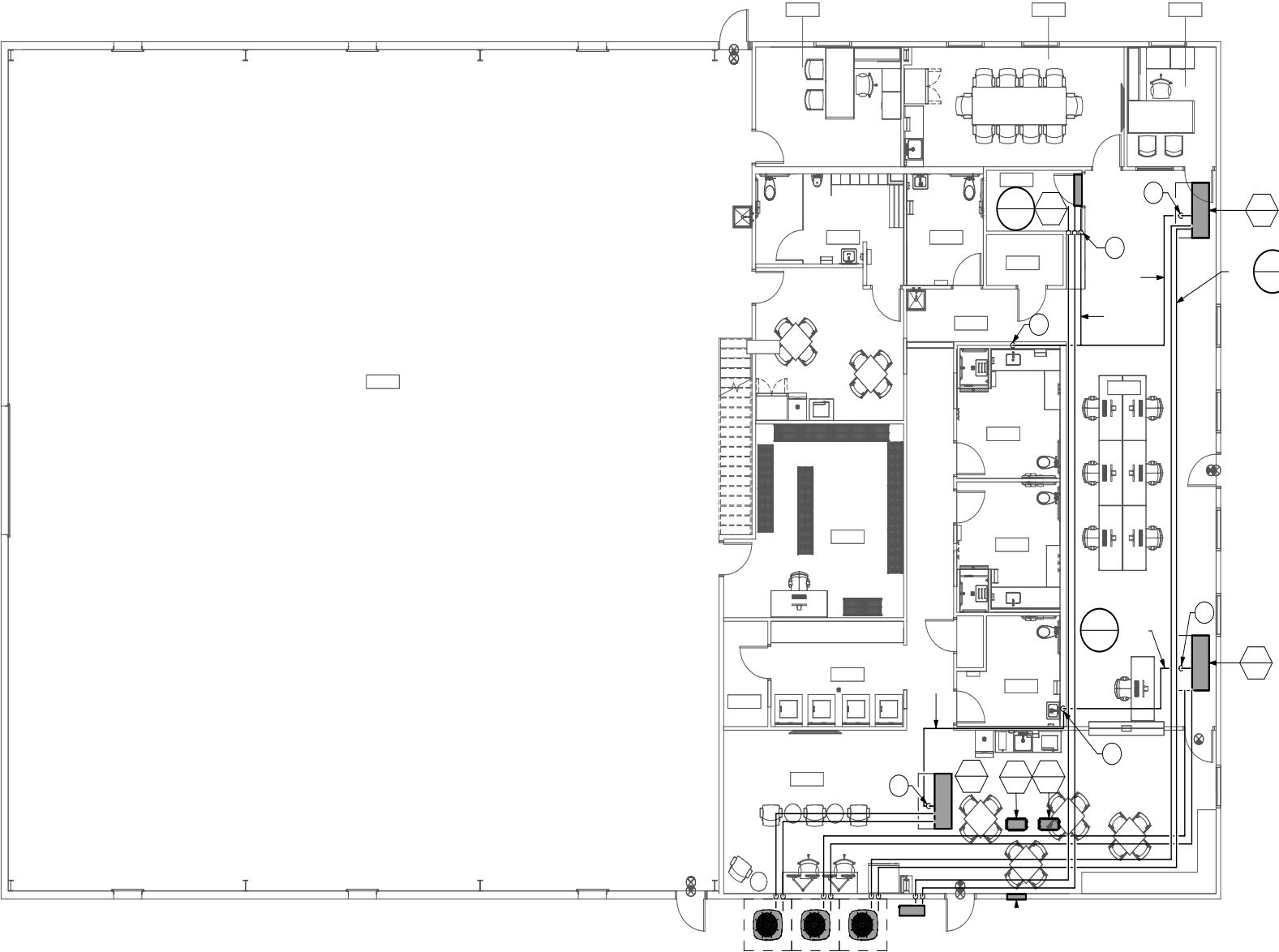
±11,840 SF ON ±5.35 ACRES
SPACE FOR LEASE

PROPERTY DETAILS

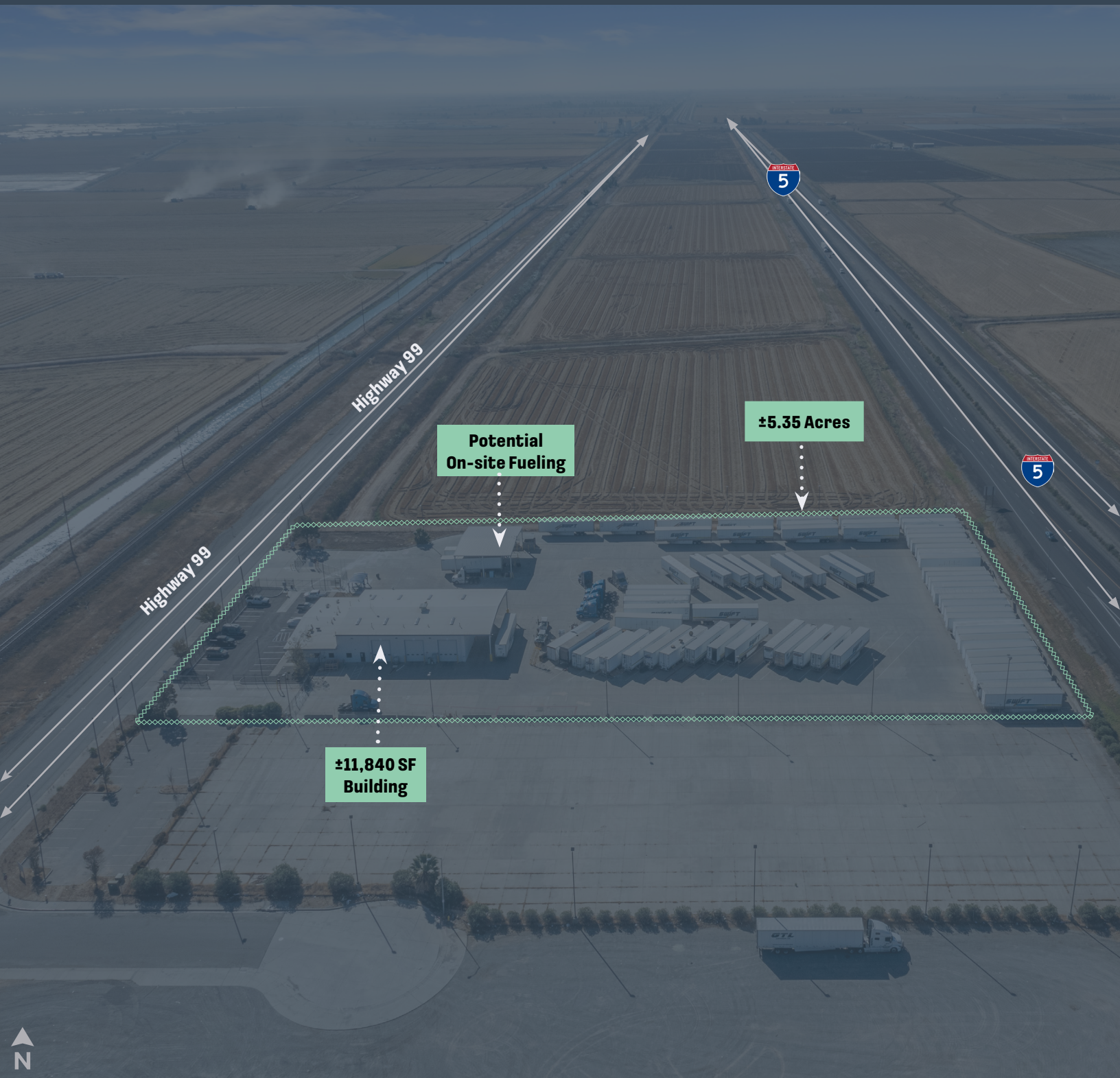
Features	Details
Building SF:	±11,840 SF
Office:	±2,400 SF
Warehouse/Restrooms:	Drivers lounge with Showers/Laundry
Lot Size:	±5.35 Acres
Grade Level Doors:	7
Clear Height:	16'-22'
Power:	800 amps 277/480 volt
Year Built:	1996 - Recently Remodeled 2024 - New Roof
Zoning:	CG/ML/PD (General Commercial, (Light Manufacturing & Planned Development))
Fuel:	Area for potential fuel station
Usability:	Excellent Truck Service and Maintenance shop with fully secured site.
Fence and Lighting:	Fenced in and ample outdoor lighting
Access:	North and Southbound access to interstate 5



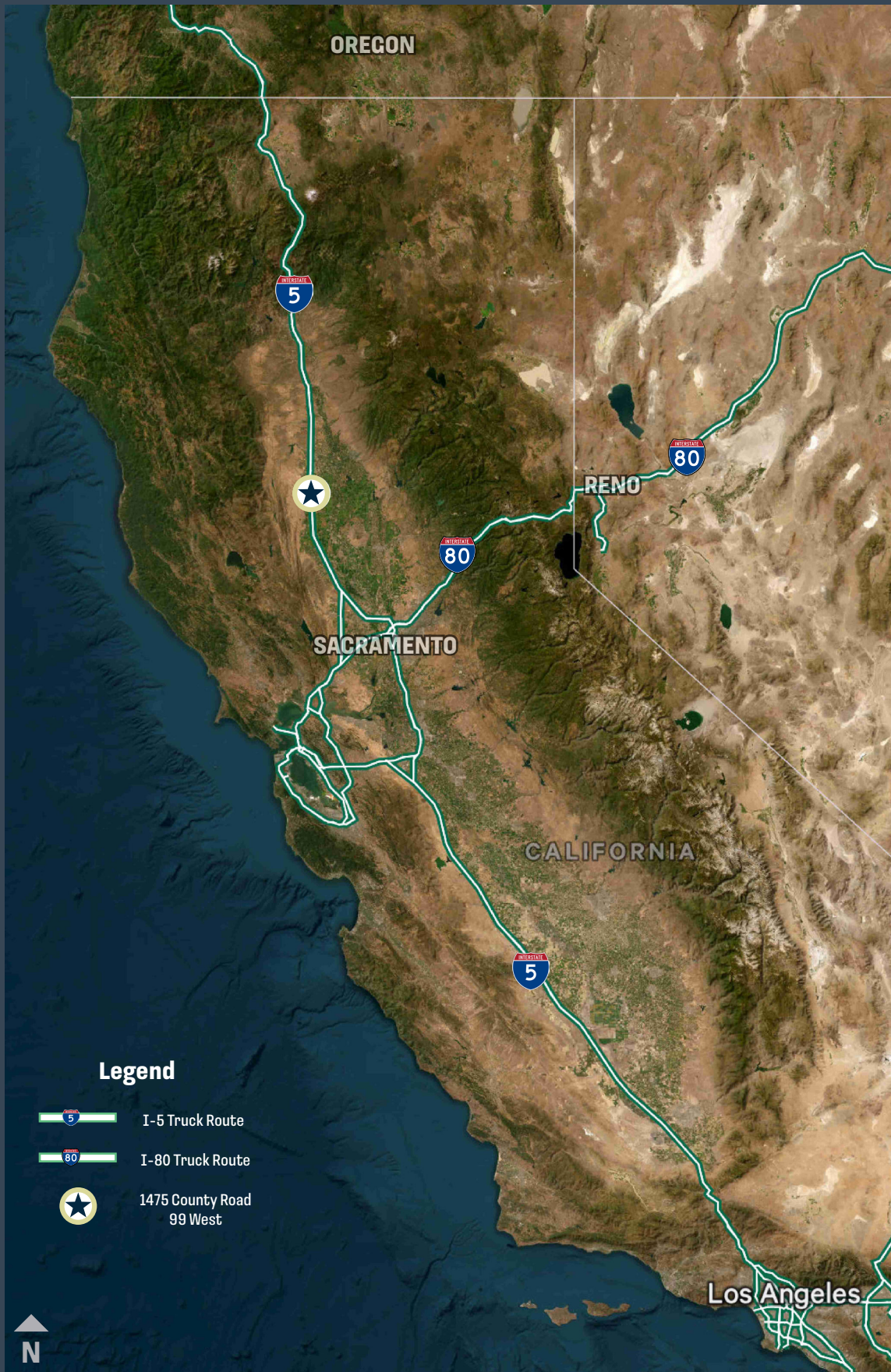
OFFICE FLOOR PLAN



AERIAL



REGIONAL TRUCKING MAP



1475 COUNTY ROAD 99 WEST
WILLOWS, CA 95988



I-5 SERVICE SHOP AND YARD

±11,840 SF ON ±5.35
ACRES
SPACE FOR LEASE

Mike Zimmerman, SIOR
Senior Vice President
+1 916 446 8702
mike.zimmerman1@cbre.com
Lic. 01514055

Jimmy Landis
Senior Associate
+1 916 446 8280
jimmy.landis@cbre.com
Lic. 02130311

CBRE

© 2025 CBRE, Inc. All rights reserved. This information has been obtained from sources believed reliable but has not been verified for accuracy or completeness. CBRE, Inc. makes no guarantee, representation or warranty and accepts no responsibility or liability as to the accuracy, completeness, or reliability of the information contained herein. You should conduct a careful, independent investigation of the property and verify all information. Any reliance on this information is solely at your own risk. CBRE and the CBRE logo are service marks of CBRE, Inc. All other marks displayed on this document are the property of their respective owners, and the use of such marks does not imply any affiliation with or endorsement of CBRE. Photos herein are the property of their respective owners. Use of these images without the express written consent of the owner is prohibited.