

Westport Business Park

6955 Portwest Drive, Suite 100
Houston, TX 77024

4,960 SF Flex/Office Available

FOR LEASE



PROPERTY HIGHLIGHTS

- Located in Westport Business Park, Just Inside the 610 Loop, South of Old Katy Road
- Direct Access to I-10 and 610 Loop in Both Directions
- 6955 Portwest Drive Building is Located on 2.23 Acres
- Multi-Tenant Building
- 68% Office, 25% A/C Open Workspace, 7% Warehouse
- Suite 100 Office/Service/Warehouse Facility

LEASE TERMS

- \$1.15 Per Square Foot/Month/Net
- 4,960 SF NRA – Immediate Availability
- 3 to 5 Year Lease Terms Available

MICHAEL FOREMAN
+1 713 963 2850
michael.foreman@cushwake.com

IRYNA FLYK
+1 713 260 0226
iryna.falyk@cushwake.com



**CUSHMAN &
WAKEFIELD**
cushmanwakefield.com

Westport Business Park

6955 Portwest Drive, Suite 100
Houston, TX 77024

4,960 SF Flex/Office Available

FOR LEASE

INGRESS/EGRESS



MICHAEL FOREMAN
+1 713 963 2850
michael.foreman@cushwake.com

IRYNA FLYK
+1 713 260 0226
iryna.falyk@cushwake.com



**CUSHMAN &
WAKEFIELD**
cushmanwakefield.com

Westport Business Park

6955 Portwest Drive, Suite 100
Houston, TX 77024

4,960 SF Flex/Office Available

FOR LEASE

INTERIOR PHOTOS & TRUCK COURT



MICHAEL FOREMAN
+1 713 963 2850
michael.foreman@cushwake.com

IRYNA FLYK
+1 713 260 0226
iryna.falyk@cushwake.com



**CUSHMAN &
WAKEFIELD**
cushmanwakefield.com

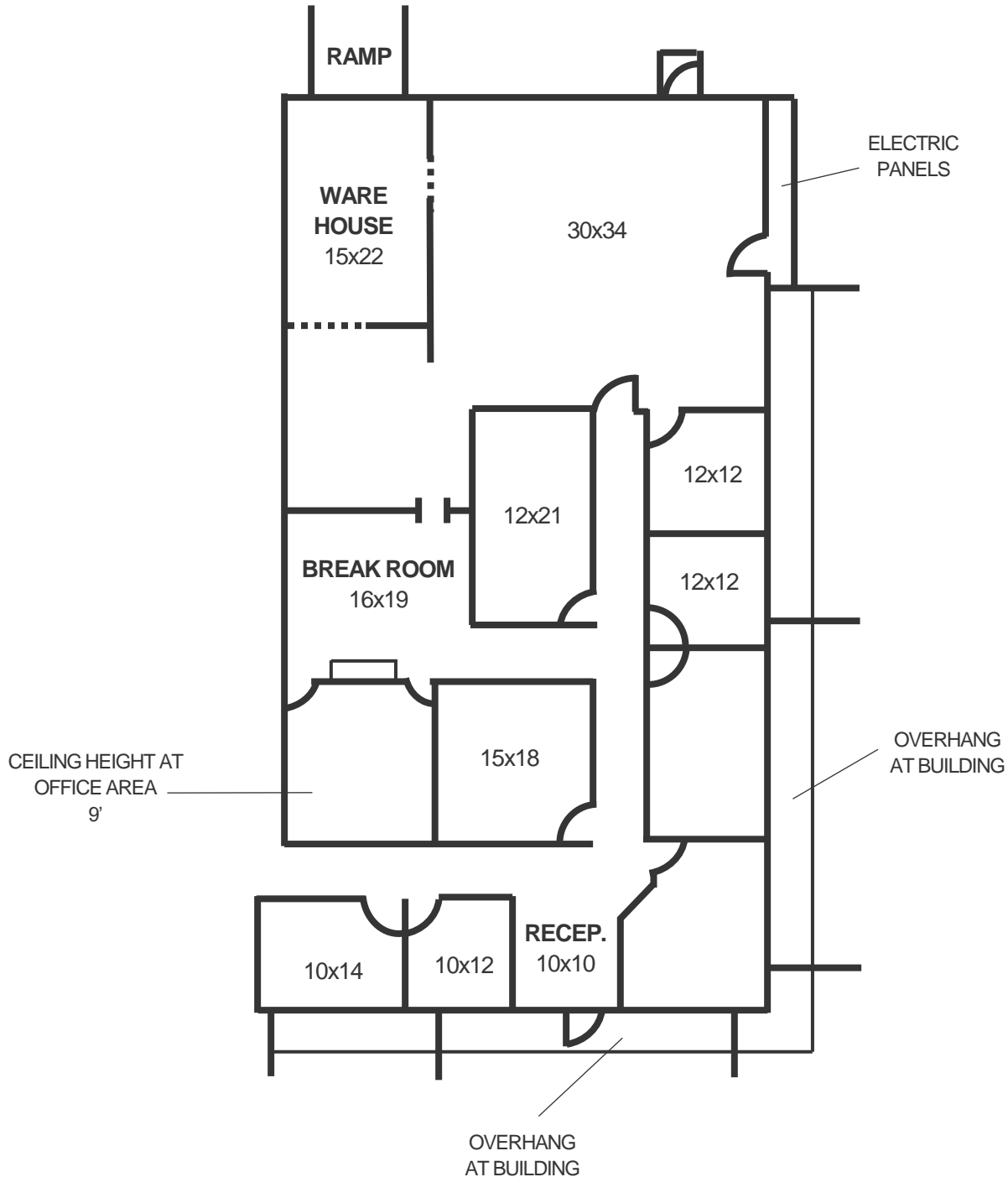
Westport Business Park

6955 Portwest Drive, Suite 100
Houston, TX 77024

4,960 SF Flex/Office Available

FOR LEASE

FLOOR PLAN



MICHAEL FOREMAN
+1 713 963 2850
michael.foreman@cushwake.com

IRYNA FLYK
+1 713 260 0226
iryna.falyk@cushwake.com



CUSHMAN &
WAKEFIELD
cushmanwakefield.com