

FOR LEASE

1809 Westgate Parkway

ATLANTA, GA 30336

14,600 SF | 7.8 AC OF GRAVELED OUTSIDE STORAGE



FOR MORE
INFORMATION:

CONNOR WINKLER, SIOR
Executive VP/Principal
cwinkler@lee-associates.com
O: 404.442.2803
C: 318.393.8248

MENDY RUDER
Principal
mruder@lee-associates.com
O: 404.442.2848
C: 973.309.2153

Owned & Managed by:
REALTERM

**LEE &
ASSOCIATES**
COMMERCIAL REAL ESTATE SERVICES

Property Highlights

BUILDING SIZE

14,600 SF maintenance building

- 3,764 SF | office
- 7,472 SF | shop
- 3,420 SF | covered canopy

OUTSIDE STORAGE

7.8 usable acres

- Compacted gravel
- Fenced / secure

LOADING

- 6 oversized grade level drive-in doors (16' x 16')
- 3 pass through bays

CLEAR HEIGHT

17'5" - 18'8"

ZONING

M-2 (Heavy Industrial)

PARKING

14 auto

FEATURES

- Rail Adjacent (CSX)



**FOR MORE
INFORMATION:**

CONNOR WINKLER, SIOR
Executive VP/Principal
cwinkler@lee-associates.com
O: 404.442.2803
C: 318.393.8248

MENDY RUDER
Principal
mruder@lee-associates.com
O: 404.442.2848
C: 973.309.2153

Owned & Managed by:

REALTERM

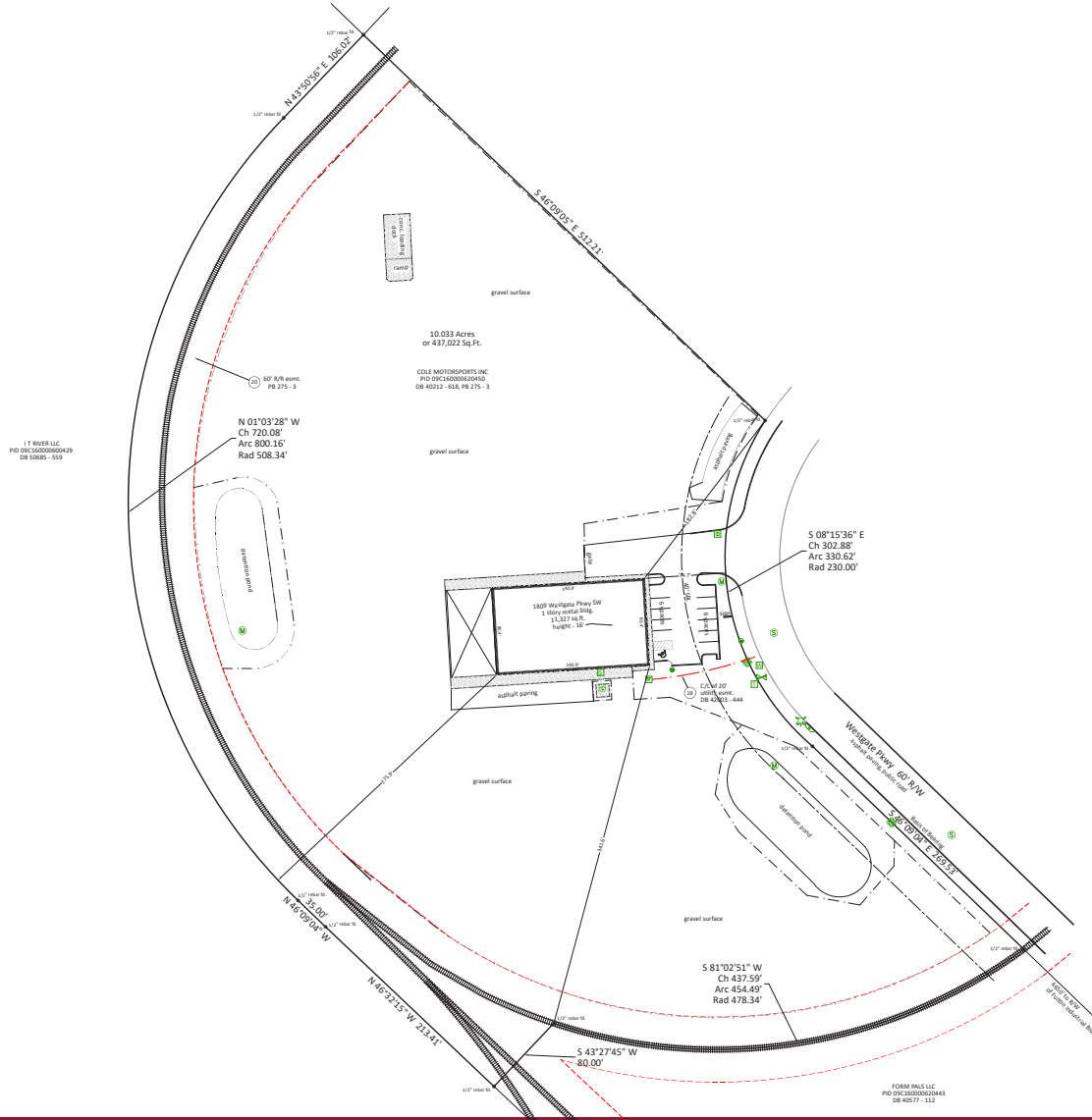
**LEE &
ASSOCIATES**
COMMERCIAL REAL ESTATE SERVICES

Site Plan

Location Highlights

Property Specifications

Property Summary



FOR MORE
INFORMATION:

CONNOR WINKLER, SIOR
Executive VP/Principal
cwinkler@lee-associates.com
O: 404.442.2803
C: 318.393.8248

MENDY RUDER
Principal
mruder@lee-associates.com
O: 404.442.2848
C: 973.309.2153

Owned & Managed by:
REALTERM

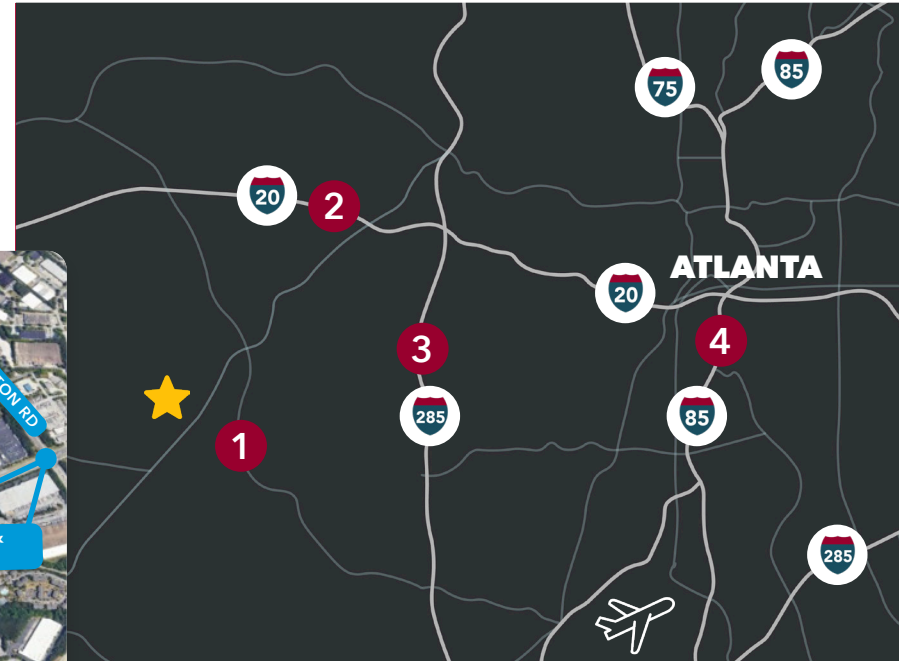
LEE & ASSOCIATES
COMMERCIAL REAL ESTATE SERVICES

Location Highlights

Location Highlights

Property Specifications

Property Summary



Key Distances

- ★ SUBJECT SITE
- ① Camp Creek Parkway | 3.1 mi
- ② Interstate 20 | 7.5 mi
- ③ Interstate 285 | 8.4 mi
- ④ Interstate 85 | 18.0 mi
- ✈ ATL Int'l Airport | 12.3 mi



FOR MORE
INFORMATION:

CONNOR WINKLER, SIOR
Executive VP/Principal
cwinkler@lee-associates.com
O: 404.442.2803
C: 318.393.8248

MENDY RUDER
Principal
mruder@lee-associates.com
O: 404.442.2848
C: 973.309.2153

Owned & Managed by:

REALTERM

LEE & ASSOCIATES
COMMERCIAL REAL ESTATE SERVICES