

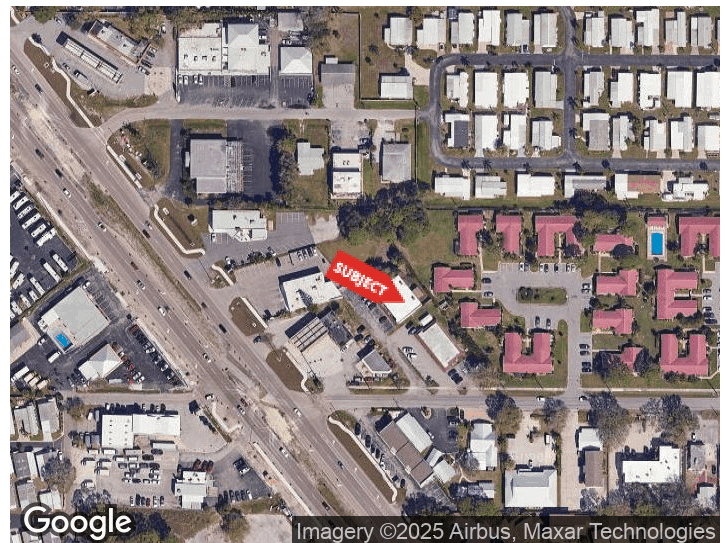


## FREESTANDING COMMERCIAL BUILDING IN GULFGATE

2011 BISPHAM RD  
SARASOTA, FLORIDA 34231

### PROPERTY HIGHLIGHTS

- 3,589 SF freestanding commercial building
- Private offices, open bullpen, conference room, and kitchenette
- Fenced yard + 279 SF wood deck
- 160 SF storage shed
- Zoned CG - allows for retail, office, and service uses
- Excellent location near the corner of US-41 and Bispham Rd
- Surrounded by restaurants, retail, and professional offices



### DEMOGRAPHICS    0.3 MILES    0.5 MILES    1 MILE

Total Households	515	1,243	4,221
Total Population	868	2,221	8,100
Average HH Income	\$89,601	\$95,209	\$99,689

For More Information

**ADAM SEIDEL**

941 923 0535

adam@americanpropertygroup.com



# FREESTANDING COMMERCIAL BUILDING IN GULFGATE



## OFFERING SUMMARY

Lease Rate:	\$4,500.00 per month (NNN)
Building Size:	3,589 SF
Lot Size:	9,452 SF
Year Built:	1984
Zoning:	CG

## PROPERTY OVERVIEW

American Property Group of Sarasota, Inc. presents 2011 Bispham Rd, Sarasota, FL

Property Type: Freestanding Commercial Building

Property Size: 3,589 SF

Located near the corner of US-41 and Bispham Road in Sarasota's established Gulf Gate commercial corridor, this freestanding building offers exceptional flexibility for a variety of uses, including office, retail, or service-based operations.

The building features private offices, a large open bullpen area, conference room, and kitchenette, providing a functional layout that supports both collaborative and private workspaces. Outside, the property includes a fenced yard, 160 SF storage shed, and a 279 SF wood deck, ideal for additional storage, equipment, or employee use.

Positioned in one of Sarasota's most active business districts, this site offers strong visibility, ample parking, and convenient access to major roadways.

## ADAM SEIDEL

941.923.0535  
adam@americanpropertygroup.com

**AMERICAN  
PROPERTY GROUP**  
OF SARASOTA, INC.



2011 Bispham Rd

## FREESTANDING COMMERCIAL BUILDING IN GULFGATE



**ADAM SEIDEL**

941.923.0535

adam@americanpropertygroup.com

**AMERICAN  
PROPERTY GROUP**  
OF SARASOTA, INC.



2011 Bispham Rd

## FREESTANDING COMMERCIAL BUILDING IN GULFGATE



**ADAM SEIDEL**

941.923.0535

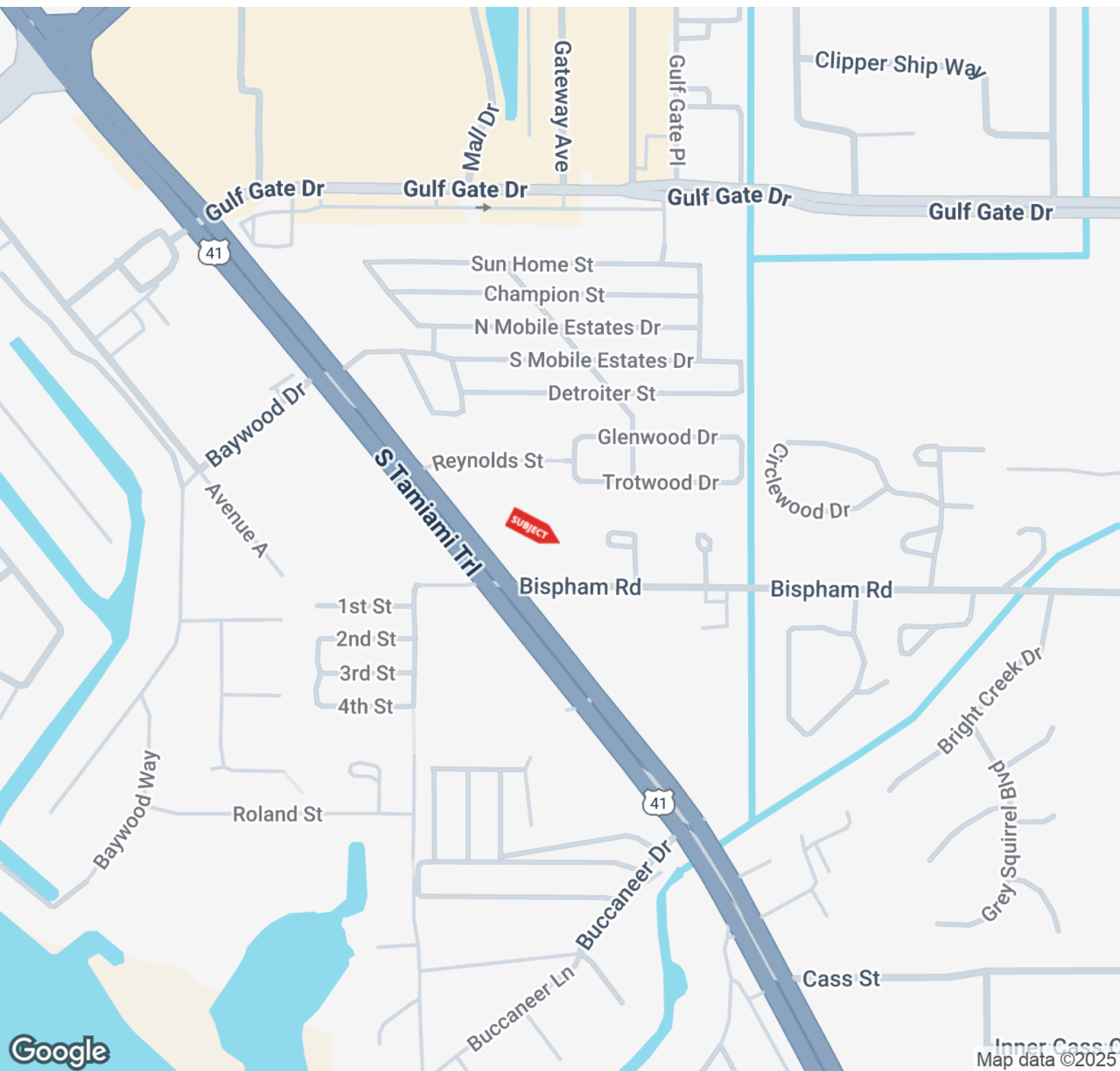
[adam@americanpropertygroup.com](mailto:adam@americanpropertygroup.com)

**AMERICAN  
PROPERTY GROUP**  
OF SARASOTA, INC.



2011 Bispham Rd

## FREESTANDING COMMERCIAL BUILDING IN GULFGATE



ADAM SEIDEL

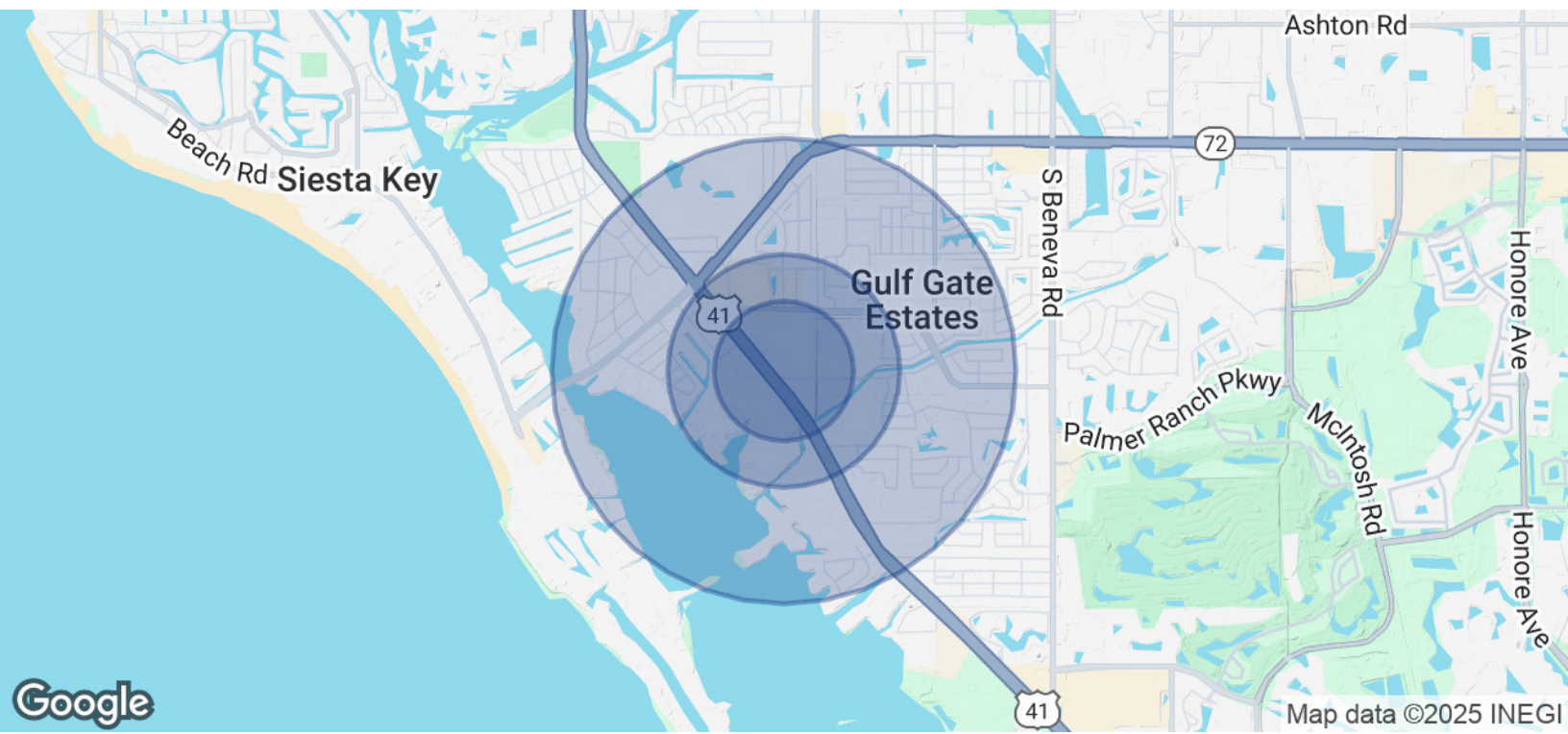
941.923.0535

adam@americanpropertygroup.com

**AMERICAN  
PROPERTY GROUP**  
OF SARASOTA, INC.



# FREESTANDING COMMERCIAL BUILDING IN GULFGATE



POPULATION	0.3 MILES	0.5 MILES	1 MILE
Total Population	868	2,221	8,100
Average Age	63	60	55
Average Age (Male)	62	58	54
Average Age (Female)	64	61	56

HOUSEHOLDS & INCOME	0.3 MILES	0.5 MILES	1 MILE
Total Households	515	1,243	4,221
# of Persons per HH	1.7	1.8	1.9
Average HH Income	\$89,601	\$95,209	\$99,689
Average House Value	\$456,558	\$505,577	\$506,347

Demographics data derived from AlphaMap

ADAM SEIDEL  
941.923.0535  
adam@americanpropertygroup.com

AMERICAN  
PROPERTY GROUP  
OF SARASOTA, INC.