

Office Space for Lease



The Creamery Building, 201 & 245 N Main St, Fort Atkinson, WI 53538



The Creamery Building in Downtown Fort Atkinson is available for lease. The building was built in the 1920's and completely refurbished in 2006 with all new windows, lighting, mechanicals, new corner elevator, roof, and is sprinkled throughout the south building. An estimated \$7 million was spent on restoring the building to what it is today. In 2005 the north building was remodeled and is connected to the main building on the northwest side. Over 300 free parking spaces available within a block radius of the building. In 2021 solar panels were installed on the rooftop, to help reduce the buildings carbon footprint.

Mike Herl
608-212-4623

Mike.herl@madisoncommercialre.com

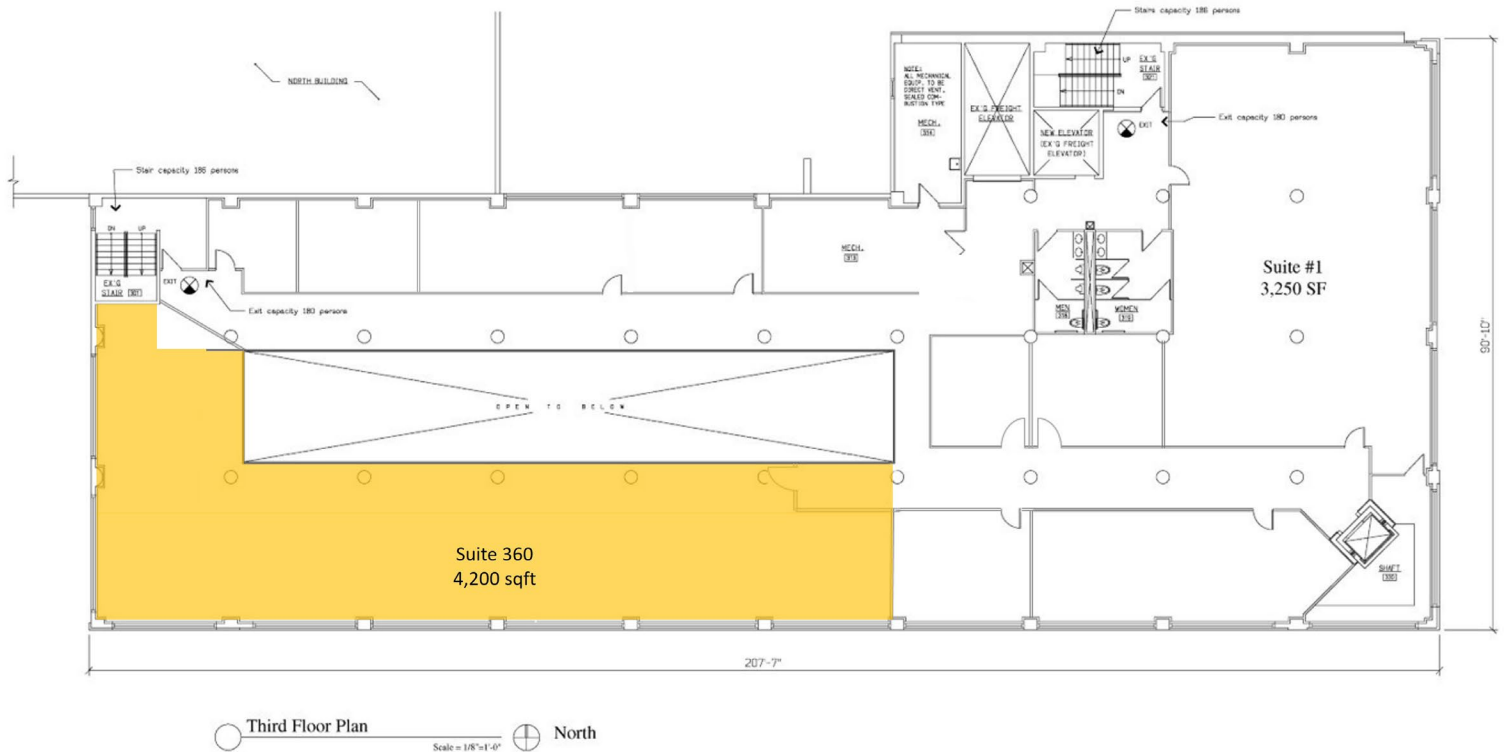
Office Space for Lease

The Creamery Building

201 & 245 N Main St, Fort Atkinson, WI 53538



Third Floor Plan



Property Highlights

- Third floor office space available
- Great natural light
- Many upgrades
- Plenty of parking on-site and nearby
- Building Virtual Tour:
<https://www.youtube.com/watch?v=IUaYW7tQhOw&feature=youtu.be>

Property Highlights

Lease Rate	\$16.00/sf
Space Available Suite 360	4,200 sf* *Includes a 20% load factor
Lease Type	Gross
TI Allowance	Negotiable
Ceiling Height	9'3"
Availability	Now
Parking	Surface, Street, City Parking lot (see map)

Mike Herl
608-212-4623

Mike.herl@madisoncommercialre.com

Office Space for Lease

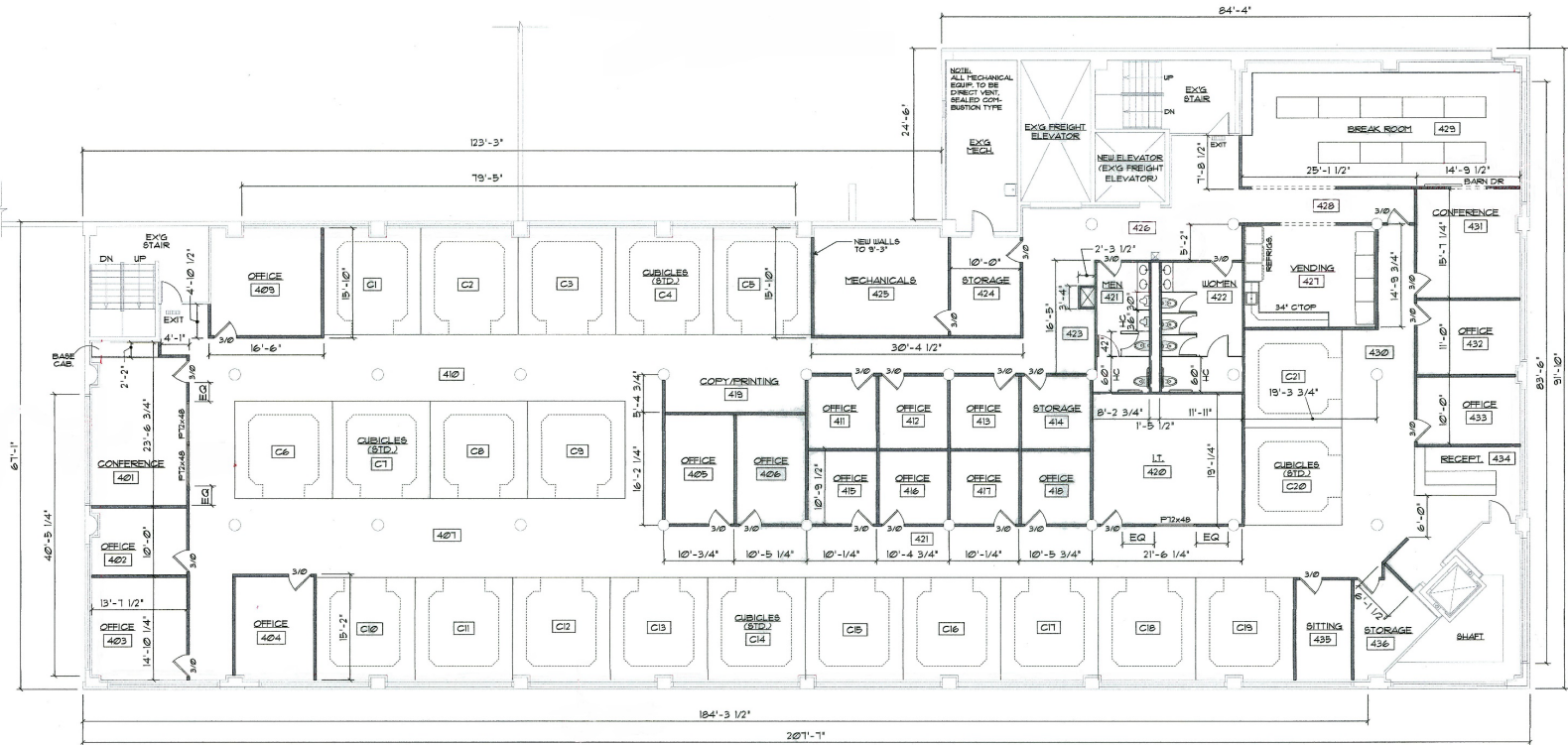
The Creamery Building

201 & 245 N Main St, Fort Atkinson, WI 53538



MADISON
COMMERCIAL REAL ESTATE
LLC

Fourth Floor Plan



FOURTH FLOOR PLAN = 15,976 S.F.

Property Highlights

- Fourth floor office space available
- Great natural light
- Fully built out
- Plenty of parking on-site and nearby
- Building Virtual Tour:
<https://www.youtube.com/watch?v=IUaYW7tQhOw&feature=youtu.be>

Property Highlights

Lease Rate	\$7.50/sf
Space Available	235 & 15,976 sf
Lease Type	NNN
NNN Expenses	\$2.62/sf
TI Allowance	Negotiable
Availability	Fall 2026
Parking	Surface, Street, City Parking lot (see map)

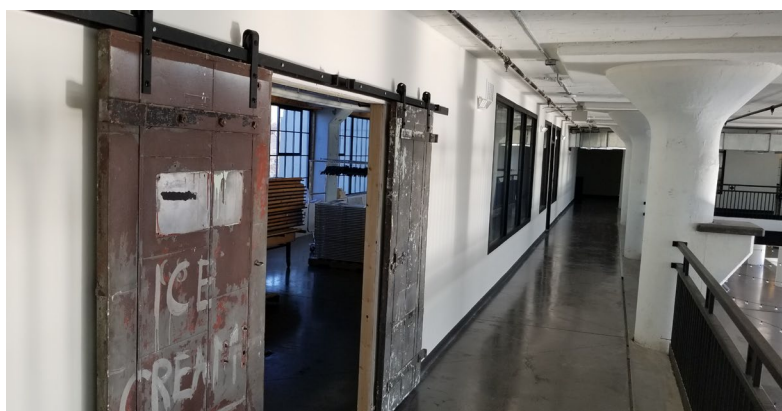
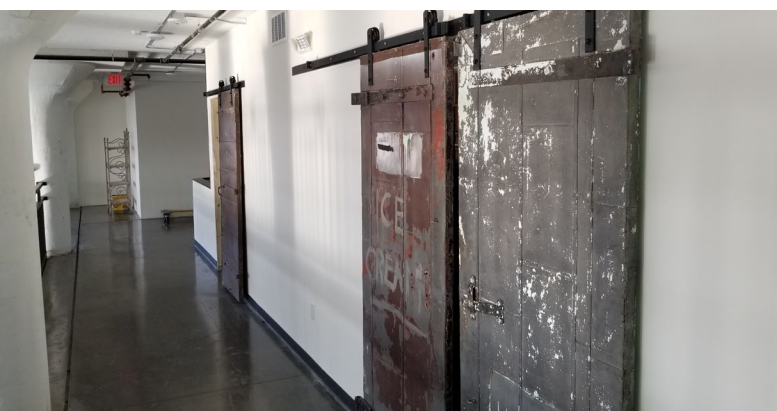
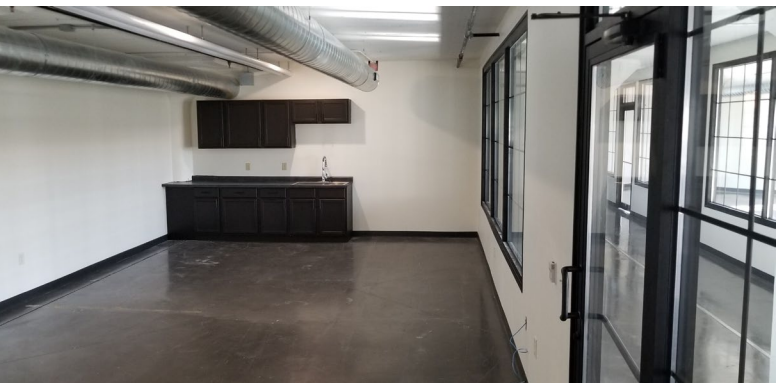
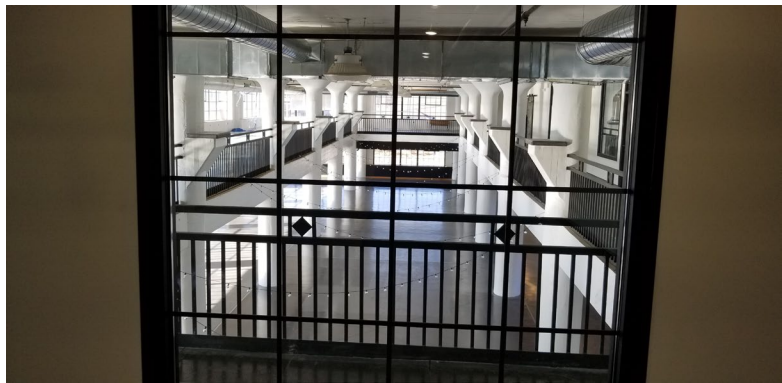
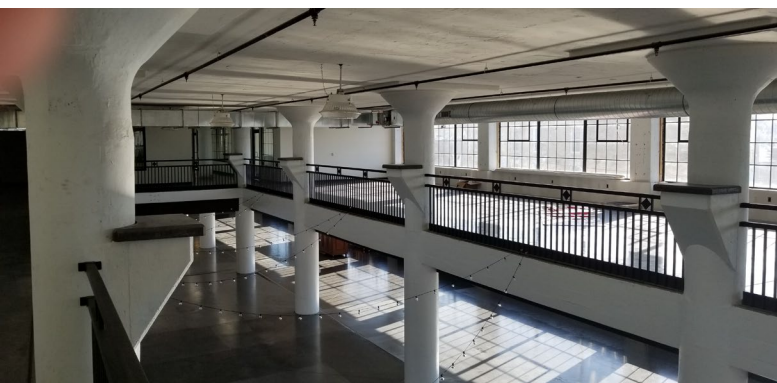
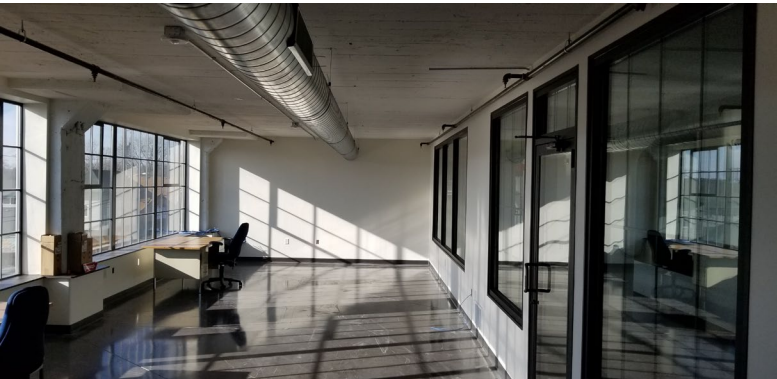
Mike Herl
608-212-4623

Mike.herl@madisoncommercialre.com

Office Space for Lease

The Creamery Building

201 & 245 N Main St, Fort Atkinson, WI 53538



Mike Herl
608-212-4623

Mike.herl@madisoncommercialre.com

Madison Commercial Real Estate LLC, 5609 Medical Cr, Suite 202, Madison WI 53719

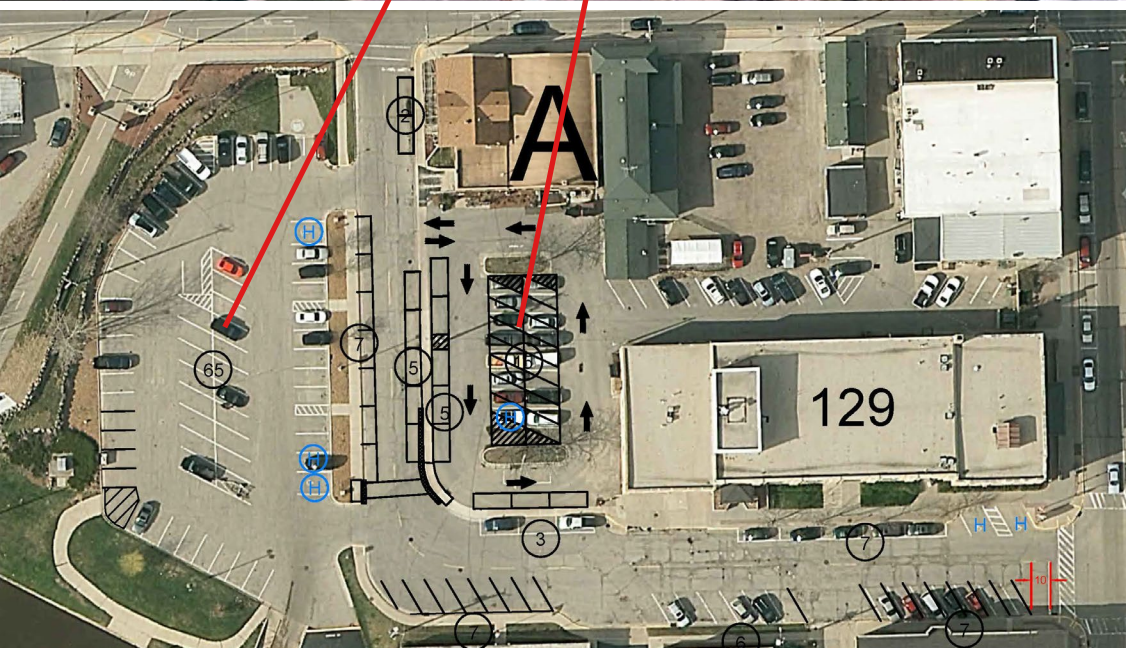
Office Space for Lease

The Creamery Building

201 & 245 N Main St, Fort Atkinson, WI 53538



MADISON
COMMERCIAL REAL ESTATE
LLC



300+ Free Parking
spaces within one
block of Building

Mike Herl
608-212-4623

Mike.herl@madisoncommercialre.com

Madison Commercial Real Estate LLC, 5609 Medical Cr, Suite 202, Madison WI 53719

BROKER DISCLOSURE TO NON-RESIDENTIAL CUSTOMERS

1 Prior to negotiating on your behalf the Broker must provide you the following disclosure statement:

2 **BROKER DISCLOSURE TO CUSTOMERS**

3 You are a customer of the broker. The broker is either an agent of another party in the transaction or a subagent of another broker
4 who is the agent of another party in the transaction. The broker, or a salesperson acting on behalf of the broker, may provide
5 brokerage services to you. Whenever the broker is providing brokerage services to you, the broker owes you, the customer, the
6 following duties:

- 7 ■ The duty to provide brokerage services to you fairly and honestly.
- 8 ■ The duty to exercise reasonable skill and care in providing brokerage services to you.
- 9 ■ The duty to provide you with accurate information about market conditions with a reasonable time if you request it, unless
10 disclosure of the information is prohibited by law.
- 11 ■ The duty to disclose to you in writing certain material adverse facts about a property, unless disclosure of the information is
12 prohibited by law (**See Lines 47-55**).
- 13 ■ The duty to protect your confidentiality. Unless the law requires it, the broker will not disclose your confidential information or the
14 confidential information of other parties (**See Lines 22-39**).
- 15 ■ The duty to safeguard trust funds and other property the broker holds.
- 16 ■ The duty, when negotiating, to present contract proposals in an objective and unbiased manner and disclose the advantages and
17 disadvantages of the proposals.

18 Please review this information carefully. A broker or salesperson can answer your questions about brokerage services, but if you
19 need legal advice, tax advice, or a professional home inspection, contact an attorney, tax advisor, or home inspector.
20 This disclosure is required by section 452.135 of the Wisconsin statutes and is for information only. It is a plain-language summary of
21 A broker's duties to a customer under section 452.133 (1) of the Wisconsin statutes.

22 **CONFIDENTIALITY NOTICE TO CUSTOMERS**

23 BROKER WILL KEEP CONFIDENTIAL ANY INFORMATION GIVEN TO BROKER IN CONFIDENCE, OR ANY INFORMATION
24 OBTAINED BY BROKER THAT HE OR SHE KNOWS A REASONABLE PERSON WOULD WANT TO BE KEPT CONFIDENTIAL,
25 UNLESS THE INFORMATION MUST BE DISCLOSED BY LAW OR YOU AUTHORIZE THE BROKER TO DISCLOSE PARTICULAR
26 INFORMATION. A BROKER SHALL CONTINUE TO KEEP THE INFORMATION CONFIDENTIAL AFTER BROKER IS NO LONGER
27 PROVIDING BROKERAGE SERVICES TO YOU.

28 THE FOLLOWING INFORMATION IS REQUIRED TO BE DISCLOSED BY LAW:

- 29 1. MATERIAL ADVERSE FACTS, AS DEFINED IN SECTION 452.01 (5g) OF THE WISCONSIN STATUTES (**SEE LINES 47-55**).
- 30 2. ANY FACTS KNOWN BY THE BROKER THAT CONTRADICT ANY INFORMATION INCLUDED IN A WRITTEN INSPECTION
31 REPORT ON THE PROPERTY OR REAL ESTATE THAT IS THE SUBJECT OF THE TRANSACTION.

32 TO ENSURE THAT THE BROKER IS AWARE OF WHAT SPECIFIC INFORMATION YOU CONSIDER CONFIDENTIAL, YOU MAY LIST
33 THAT INFORMATION BELOW (**SEE LINES 35-36**). AT A LATER TIME, YOU MAY ALSO PROVIDE THE BROKER WITH OTHER
34 INFORMATION YOU CONSIDER TO BE CONFIDENTIAL.

35 **CONFIDENTIAL INFORMATION:** _____

37 **NON-CONFIDENTIAL INFORMATION** (The following information may be disclosed by Broker): _____

39 *(INSERT INFORMATION YOU AUTHORIZE THE BROKER TO DISCLOSE SUCH AS FINANCIAL QUALIFICATION INFORMATION.)*

40 **CONSENT TO TELEPHONE SOLICITATION**

41 I/We agree that the Broker and any affiliated settlement service providers (for example, a mortgage company or title company) may
42 call our/my home or cell phone numbers regarding issues, goods and services related to the real estate transaction until I/we
43 withdraw this consent in writing. **List Home/Cell Numbers:** _____

44 **SEX OFFENDER REGISTRY**

45 *Notice: You may obtain information about the sex offender registry and persons registered with the registry by contacting the*
46 *Wisconsin Department of Corrections on the Internet at <http://offender.doc.state.wi.us/public/> or by phone at 608-240-5830.*

47 **DEFINITION OF MATERIAL ADVERSE FACTS**

48 A "material adverse fact" is defined in Wis. Stat. § 452.01 (5g) as an adverse fact that a party indicates is of such significance, or that
49 is generally recognized by a competent licensee as being of such significance to a reasonable party, that it affects or would affect
50 the party's decision to enter into a contract or agreement concerning a transaction or affects or would affect the party's decision
51 about the terms of such a contract or agreement. An "adverse fact" is defined in Wis. Stat. § 452.01 (1e) as a condition or occurrence
52 that a competent licensee generally recognizes will significantly and adversely affect the value of the property, significantly reduce
53 the structural integrity of improvements to real estate, or present a significant health risk to occupants of the property; or information
54 that indicates that a party to a transaction is not able to or does not intend to meet his or her obligations under a contract or
55 agreement made concerning the transaction.