

CAVE CREEK PLAZA

9120 N CAVE CREEK ROAD | PHOENIX, AZ 85020



Reuben Nach
Commercial Associate
602.881.4724
rnach@roiproperties.com

Aaron Gutierrez
Commercial Associate
602.396.8004
agutierrez@roiproperties.com

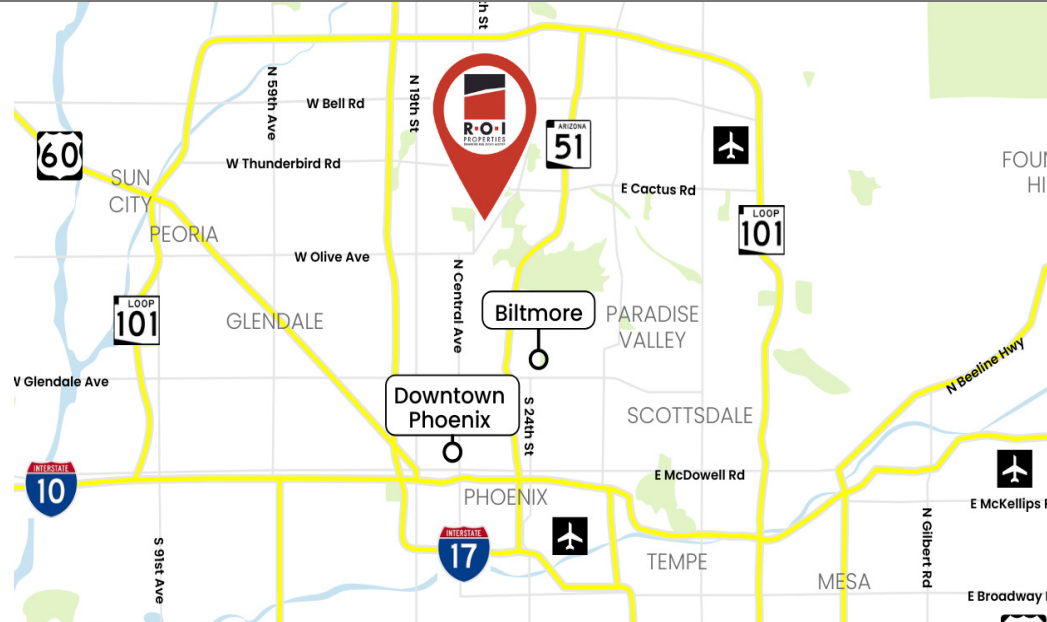
R.O.I. Properties
3333 E Camelback Rd, Ste 252
Phoenix, AZ 85018
www.roiproperties.com



C-3 ZONED RETAIL SUITE AVAILABLE

9120 NORTH CAVE CREEK ROAD, PHOENIX, AZ 85020

FOR LEASE



OFFERING SUMMARY

Lease Rate: \$1,500/Month (MG)

Available Space: 942 SF

Zoning: C-3

PROPERTY OVERVIEW

Cave Creek Plaza offers prime retail suites in a bustling submarket, conveniently located near the busy 7th Street, Dunlap, and Cave Creek intersection. The plaza's C-3 zoning allows for a wide range of heavy commercial uses, making it a versatile choice for many businesses. With only one available space at 942 SF, this is a rare opportunity. Retail businesses will benefit from the plaza's high traffic and well-maintained facilities. Its prime location near major roads ensures excellent visibility and easy access for both customers and employees.

PROPERTY HIGHLIGHTS

- Near Heavily Trafficked Intersection (22,598 VPD)
- C-3 Zoning, Allowing Heavy Commercial Uses
- Affordable Rates
- Well Maintained Center

REUBEN NACH

602.881.4724
rnach@roiproperties.com

AARON GUTIERREZ

602.396.8004
agutierrez@roiproperties.com

R.O.I. PROPERTIES

3333 E. Camelback RD | Suite 252 | Phoenix, AZ 85018
T: 602.319.1326 | F: 602.794.6389

www.roiproperties.com



NEAR HEAVILY TRAFFICKED INTERSECTION

9120 NORTH CAVE CREEK ROAD, PHOENIX, AZ 85020

FOR LEASE



REUBEN NACH

602.881.4724
rnach@roiproperties.com

AARON GUTIERREZ

602.396.8004
agutierrez@roiproperties.com

R.O.I. PROPERTIES

3333 E. Camelback RD | Suite 252 | Phoenix, AZ 85018
T: 602.319.1326 | F: 602.794.6389

www.roiproperties.com

2025 R.O.I. Properties, LLC. All rights reserved. No warranty or representation, expressed or implied, is made to the accuracy of the information contained herein. Prices and availability subject to change without notice.



LOCATED IN DENSE RETAIL HUB

9120 NORTH CAVE CREEK ROAD, PHOENIX, AZ 85020

FOR LEASE



REUBEN NACH

602.881.4724
rnach@roiproperties.com

AARON GUTIERREZ

602.396.8004
agutierrez@roiproperties.com

R.O.I. PROPERTIES

3333 E. Camelback RD | Suite 252 | Phoenix, AZ 85018
T: 602.319.1326 | F: 602.794.6389

www.roiproperties.com

2025 R.O.I. Properties, LLC. All rights reserved. No warranty or representation, expressed or implied, is made to the accuracy of the information contained herein. Prices and availability subject to change without notice.



INTERIOR PHOTOS

9120 NORTH CAVE CREEK ROAD, PHOENIX, AZ 85020

FOR LEASE



REUBEN NACH

602.881.4724
rnach@roiproperties.com

AARON GUTIERREZ

602.396.8004
agutierrez@roiproperties.com

2025 R.O.I. Properties, LLC. All rights reserved. No warranty or representation, expressed or implied, is made to the accuracy of the information contained herein. Prices and availability subject to change without notice.

R.O.I. PROPERTIES

3333 E. Camelback RD | Suite 252 | Phoenix, AZ 85018
T: 602.319.1326 | F: 602.794.6389

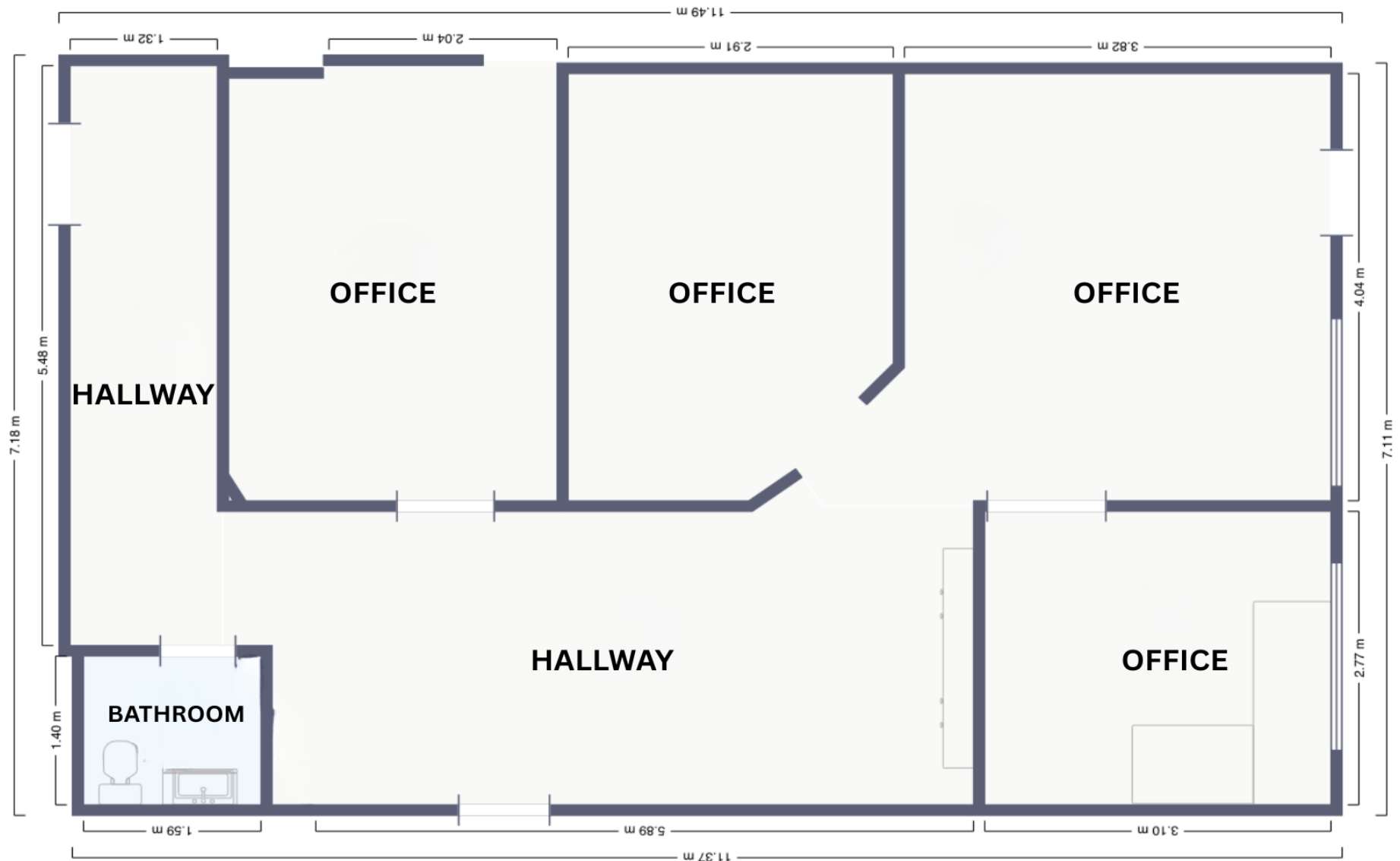
www.roiproperties.com



FLOORPLAN

9120 NORTH CAVE CREEK ROAD, PHOENIX, AZ 85020

FOR LEASE



REUBEN NACH

602.881.4724
rnach@roiproperties.com

AARON GUTIERREZ

602.396.8004
agutierrez@roiproperties.com

R.O.I. PROPERTIES

3333 E. Camelback RD | Suite 252 | Phoenix, AZ 85018
T: 602.319.1326 | F: 602.794.6389

www.roiproperties.com

2025 R.O.I. Properties, LLC. All rights reserved. No warranty or representation, expressed or implied, is made to the accuracy of the information contained herein. Prices and availability subject to change without notice.



1-MILE DEMOGRAPHIC SUMMARY

9120 NORTH CAVE CREEK ROAD, PHOENIX, AZ 85020

FOR LEASE

DEMOGRAPHIC SUMMARY

9116 N Cave Creek Rd, Phoenix, Arizona, 85020 2

Ring of 1 mile

KEY FACTS

18,249

Population



8,238

Households

40.6

Median Age

\$54,992

Median Disposable Income

EDUCATION

14%

No High School Diploma



20%

High School Graduate



34%

Some College



32%

Bachelor's/Grad/Prof Degree

INCOME



\$67,128

Median Household Income



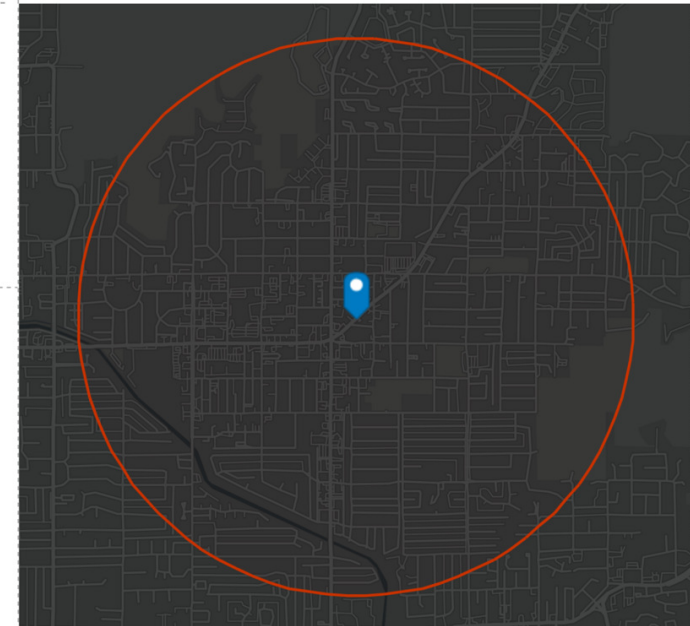
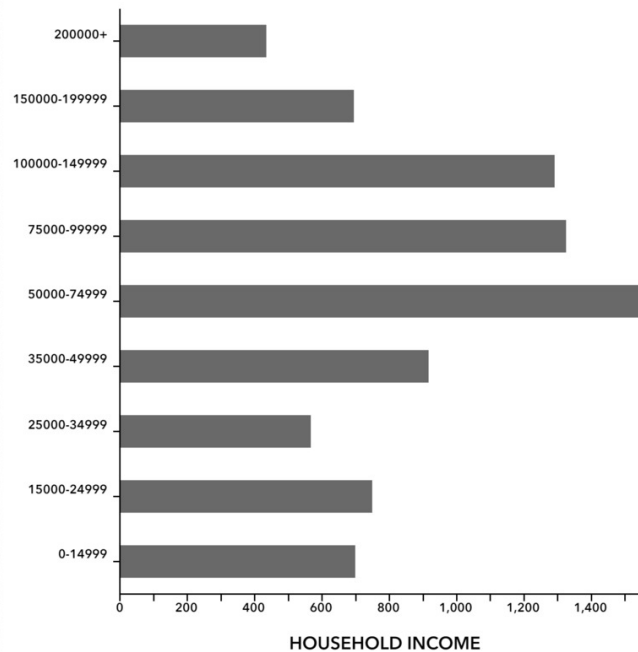
\$39,036

Per Capita Income



\$111,017

Median Net Worth



EMPLOYMENT



White Collar

66%



Blue Collar

19%



Services

21%

3.6%

Unemployment Rate

Source: Esri. The vintage of the data is 2024, 2029.

© 2024 Esri

REUBEN NACH

602.881.4724
rnach@roiproperties.com

AARON GUTIERREZ

602.396.8004
agutierrez@roiproperties.com

R.O.I. PROPERTIES

3333 E. Camelback RD | Suite 252 | Phoenix, AZ 85018
T: 602.319.1326 | F: 602.794.6389

www.roiproperties.com

2025 R.O.I. Properties, LLC. All rights reserved. No warranty or representation, expressed or implied, is made to the accuracy of the information contained herein. Prices and availability subject to change without notice.



3-MILE DEMOGRAPHIC SUMMARY

9120 NORTH CAVE CREEK ROAD, PHOENIX, AZ 85020

FOR LEASE

DEMOGRAPHIC SUMMARY

9116 N Cave Creek Rd, Phoenix, Arizona, 85020 2

Ring of 3 miles

KEY FACTS

111,151

Population



48,652

Households

40.4

Median Age

\$59,402

Median Disposable Income

EDUCATION

9%

No High School Diploma



20%

High School Graduate



29%

Some College



43%

Bachelor's/Grad/Prof Degree

INCOME



\$72,822

Median Household Income



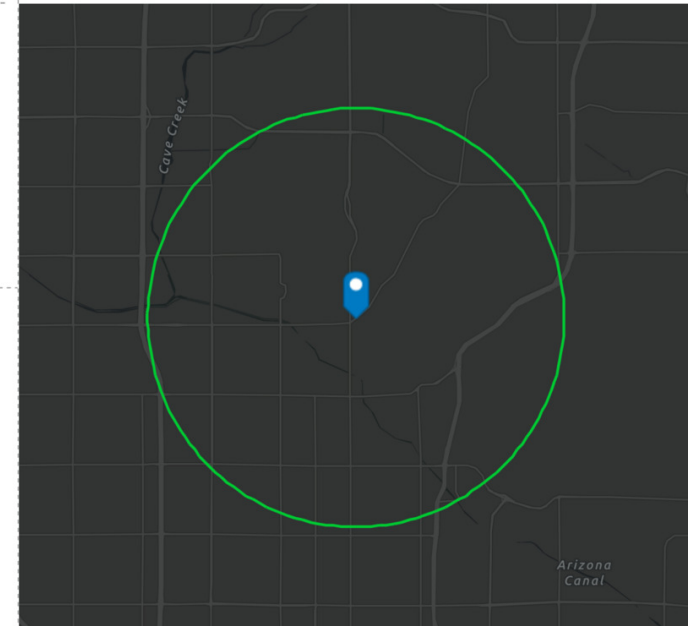
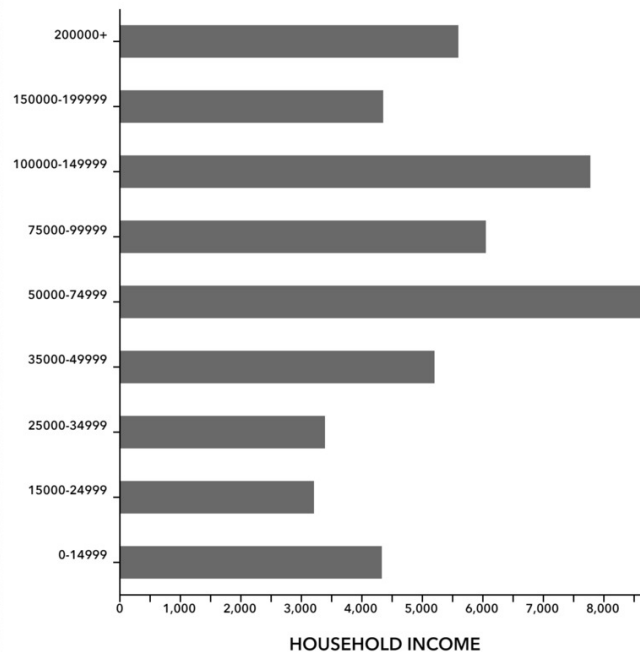
\$47,842

Per Capita Income



\$147,500

Median Net Worth



EMPLOYMENT



White Collar

71%



Blue Collar

15%



Services

18%

4.8%

Unemployment Rate

Source: Esri. The vintage of the data is 2024, 2029.

© 2024 Esri

REUBEN NACH

602.881.4724
rnach@roiproperties.com

AARON GUTIERREZ

602.396.8004
agutierrez@roiproperties.com

R.O.I. PROPERTIES

3333 E. Camelback RD | Suite 252 | Phoenix, AZ 85018
T: 602.319.1326 | F: 602.794.6389

www.roiproperties.com

2025 R.O.I. Properties, LLC. All rights reserved. No warranty or representation, expressed or implied, is made to the accuracy of the information contained herein. Prices and availability subject to change without notice.

