

2,880 SF WAREHOUSE FOR LEASE
3551 23RD AVE S. UNITS 5 & 6, LAKE WORTH, FL 33461



This 2,880 SF unit features (2) glass storefront entry doors leading into approximately 475 SF of office space, including (2) restrooms. The warehouse area consists of multiple overhead doors, 3phase electric, and 14-foot clear ceiling height.

The unit is equipped with a functioning spray booth measuring approximately 300 SF, making it ideal for a cabinet shop or finish contractor specializing in cabinetry or other woodwork.

The space includes (2) 10' x 10' overhead doors at the front and (2) 10' x 10' overhead doors at the rear, providing drive-through capability and efficient loading and unloading.

This unit can be combined with Unit 7 for a total of 4,320 SF, or with Units 7 and 8 for a combined 5,760 SF.

Zoning:	Light Industrial	Lease Rate PSF Annual: \$18.00
Property Type:	Office / Warehouse	Monthly Operating Expenses PSF: \$7.83
Square Footage:	2,880 SF	Total Lease Rate PSF: \$25.83
Lease Type:	NNN	Monthly Rent \$6,199.20

CORNERSTONE

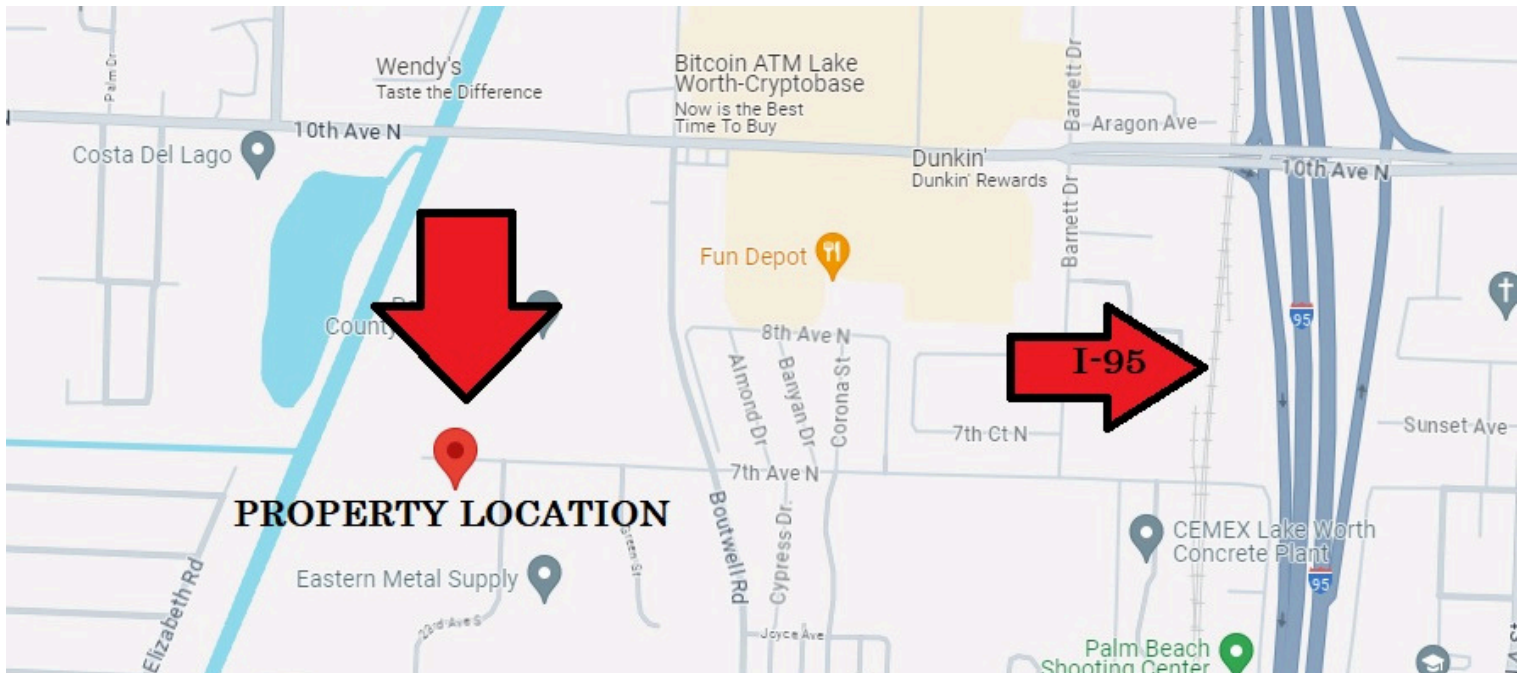
Realty, Inc.



CORNERSTONE

Realty, Inc.





Cornerstone Realty, Inc
8233 Gator Lane, Suite 18
West Palm Beach, FL 33411
(561)793-9810
www.cri-re.com



Contact: Devin Schmidt
devin@cri-re.com
561-793-9810