

11200

CORBIN AVENUE
PORTER RANCH, CA



For Lease

Medical/Office Opportunity



PROPERTY AVAILABILITIES



Available Space:	Suite 200 - 1,169 RSF
	Suite 201 - 4,800 RSF
Asking Rate:	Office \$4.00/SF/NNN
	Medical \$4.25/SF/NNN
Parking:	3/1,000 at no additional cost

PROPERTY HIGHLIGHTS

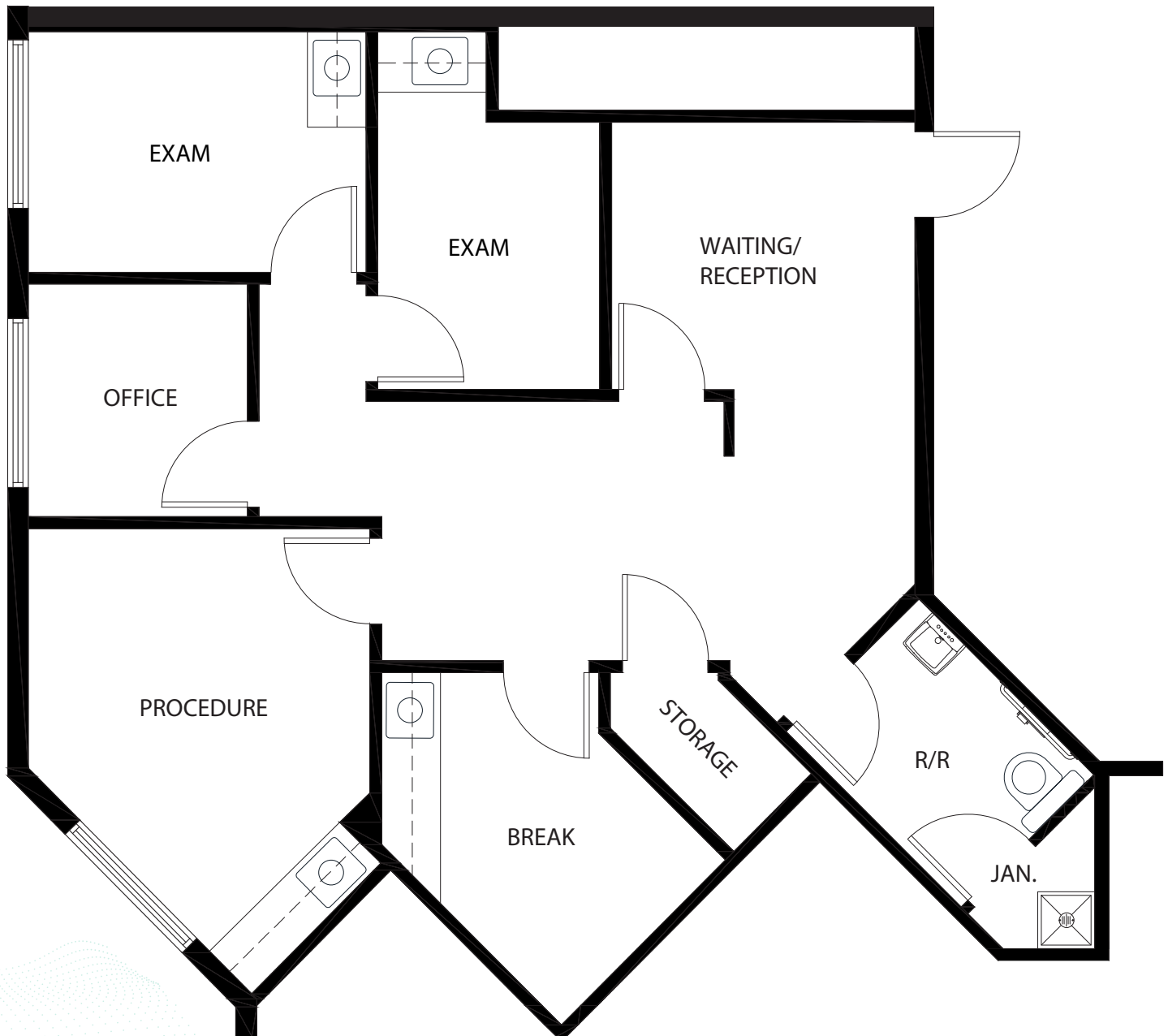
- Adjacent to 118 Freeway
- Walking distance from amenities located at the Porter Ranch Town Center & The Vineyards at Porter Ranch
- Close Proximity to the Porter Valley Country Club
- Elevator Served
- On-site Management



11200 CORBIN AVENUE

Suite 200

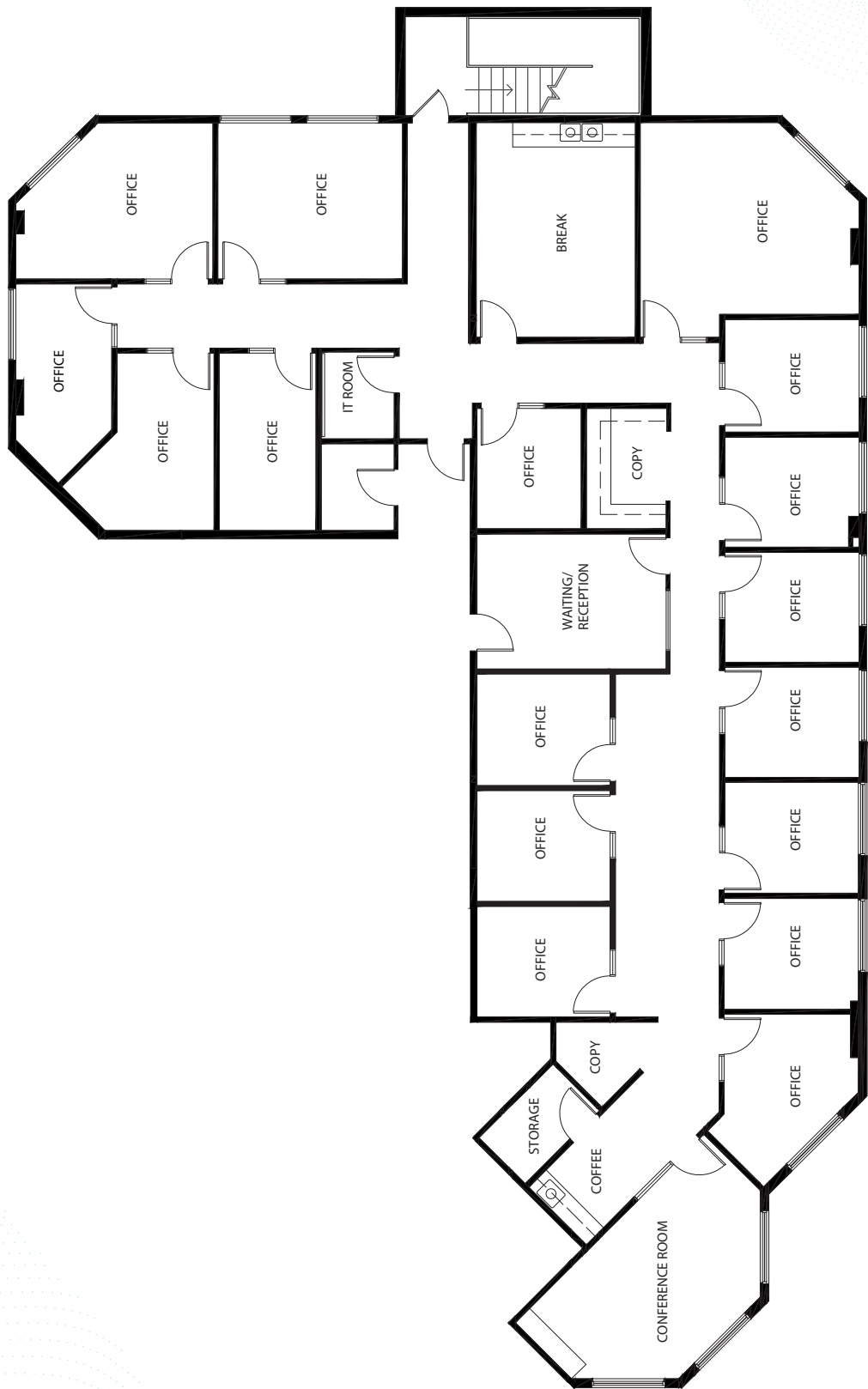
Square Feet: 1,169 RSF | Availability: Now



11200 CORBIN AVENUE

Suite 201

Square Feet: 4,800 RSF | Availability: Now



INTERIOR PHOTOS



LOCATION MAP



11200

CORBIN AVENUE PORTER RANCH, CA



BROKER TEAM

Chloe Sanchez
Senior Associate
+1 747 234 3553
chloe.sanchez@jll.com
Lic: #02109571

Although information has been obtained from sources deemed reliable, JLL does not make any guarantees, warranties or representations, express or implied, as to the completeness or accuracy as to the information contained herein. Any projections, opinions, assumptions or estimates used are for example only. There may be differences between projected and actual results, and those differences may be material. JLL does not accept any liability for any loss or damage suffered by any party resulting from reliance on this information. If the recipient of this information has signed a confidentiality agreement with JLL regarding this matter, this information is subject to the terms of that agreement. ©2025 Jones Lang LaSalle Brokerage, Inc. All rights reserved.

