

FOR SALE OR LEASE

5,398 SF TURNKEY OFFICE SPACE

4100 Shoreline Drive, Spring Park, MN 55384

Boat to Work!

REAL ESTATE ADVISOR:

KAI THOMSEN, PRINCIPAL

952.223.6724

kthomsen@lee-associates.com

1601 Utica Avenue South, Suite 375, Minneapolis, MN 55416



COMMERCIAL REAL ESTATE SERVICES



The Commercial Condos at The Mist, 4100 Shoreline Drive in Spring Park, offer Class A Turnkey Office and Dental Space nestled on the shore of Lake Minnetonka. For Sale or Lease, the property is move-in ready with furniture and dental equipment negotiable. Spring Park is a small town rich in history as a summer lake resort, and is a convenient 20 miles west of Minneapolis. Restaurants and recreation abound, and with your own personal slip, you could even boat to work!

KAI THOMSEN, PRINCIPAL
 952.223.6724
 kthomsen@lee-associates.com

PROPERTY OVERVIEW

Building Size

7,496 Total SF

Available SF

5,398 Office

2,098 Dental SOLD

Asking Rate

Lease - Negotiable

Sale Price - Negotiable

Available

Furniture Negotiable

Year Built

2005 - Renovated 2014

Parking

40 Outdoor/40 Underground

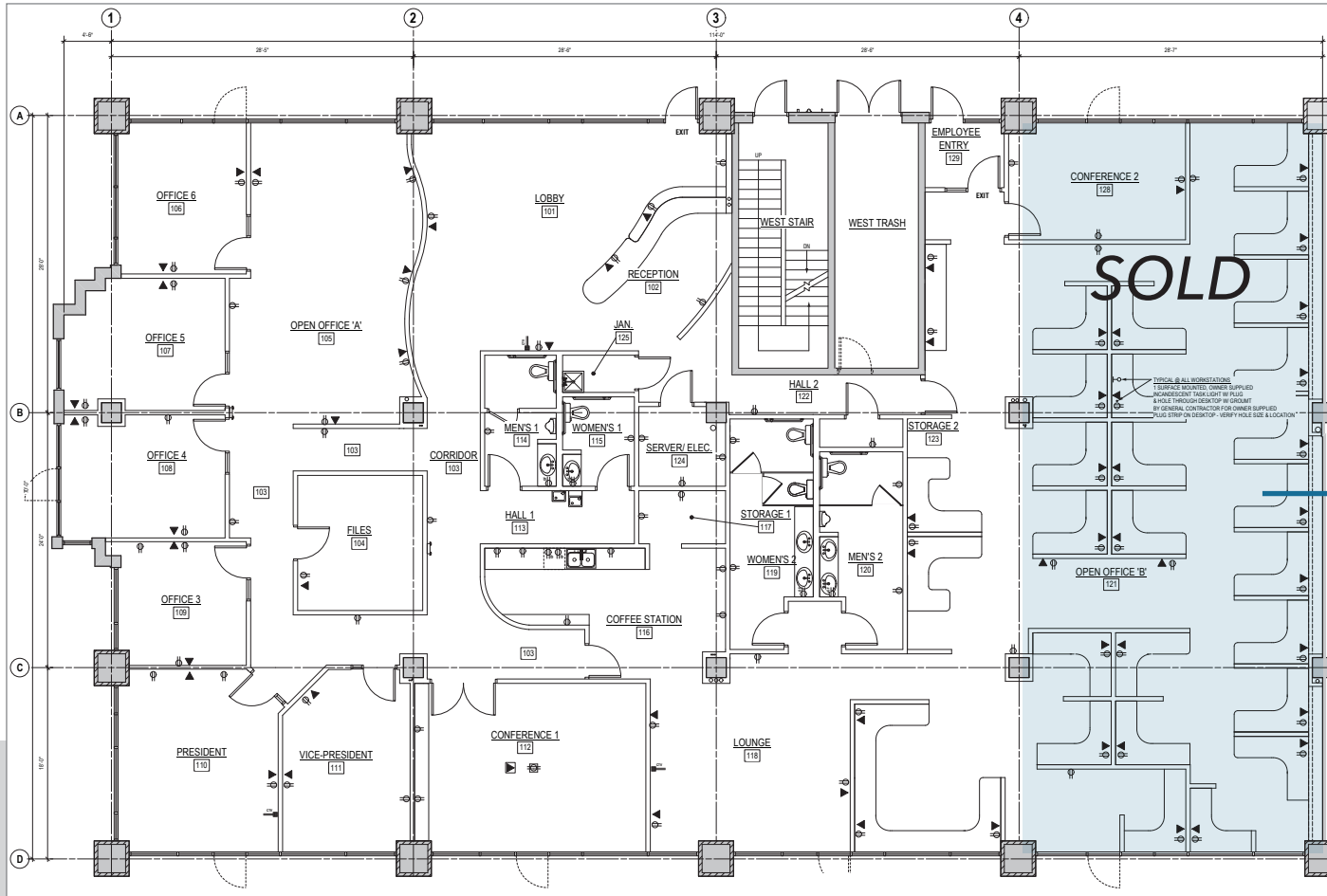
Taxes and Association

Taxes: \$3.55 psf/yr

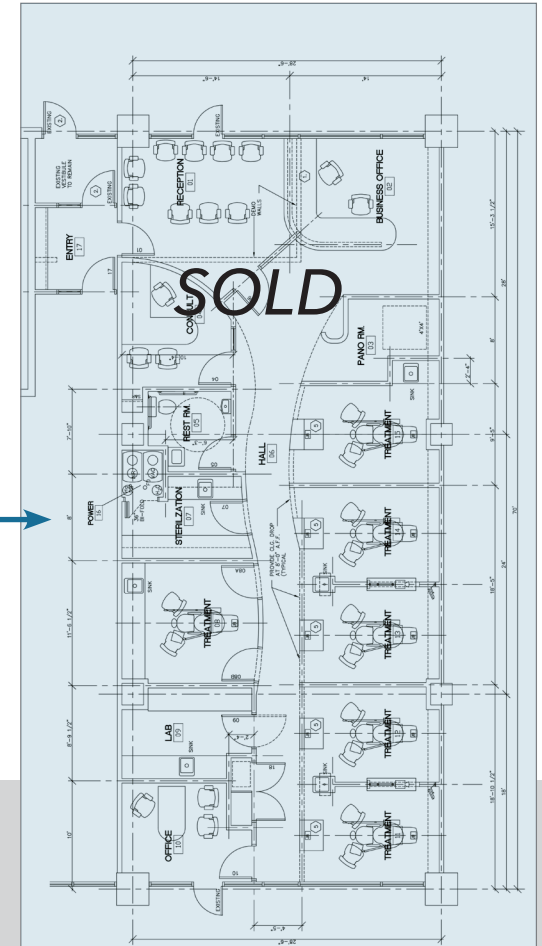
Association: \$4.72 psf/yr

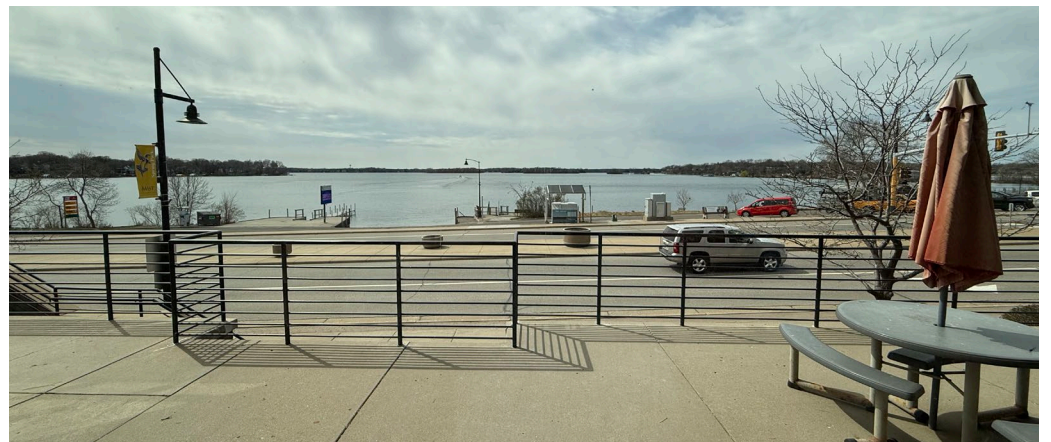
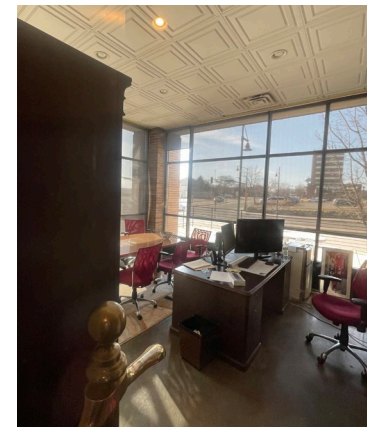
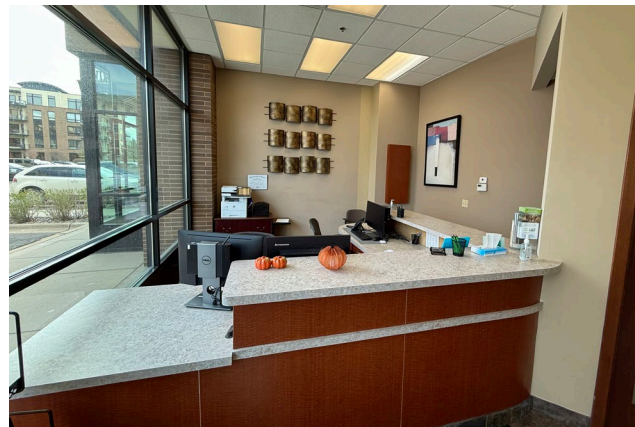


Floor Plan

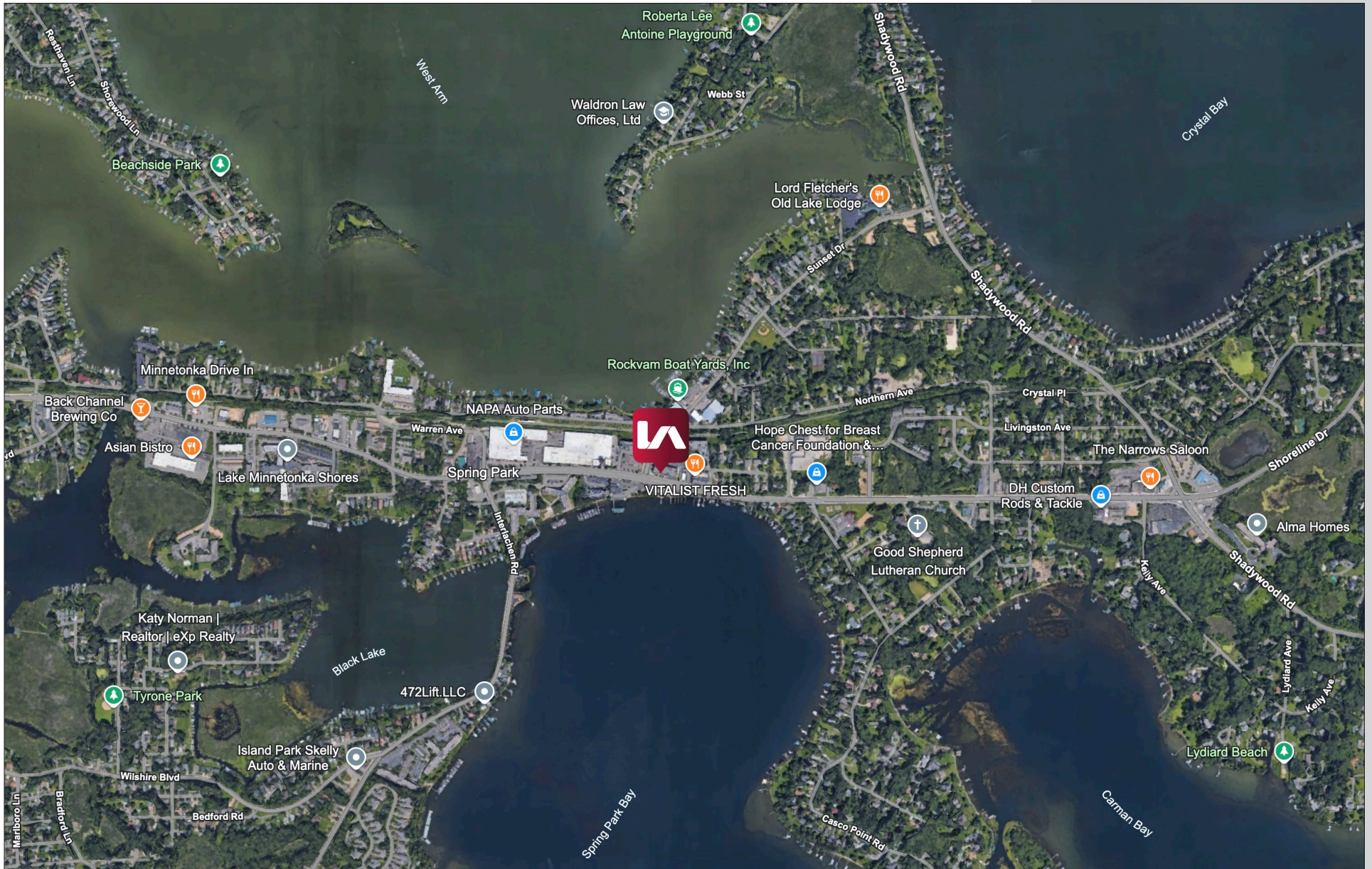


7,496 SF TOTAL AVAILABLE





Area Map





KAI THOMSEN

Principal

952.223.6724

kthomsen@lee-associates.com

Shoreline Dr

Google