

# 1104 BRYANT STREET

FOR LEASE | NEWLY REMODELED FLEX SPACE

**TCP**  
**TOUCHSTONE**  
COMMERCIAL PARTNERS



[WWW.TCPRE.COM](http://WWW.TCPRE.COM)

**ZACH HAUPERT** zhaupert@tcpre.com  
D 415.539.1121 | C 415.812.1219

**MICHAEL SANBERG** msanberg@tcpre.com  
D 415.539.1103 | C 415.697.6088

**TREVOR GUDIM** trevor@tcpre.com  
D 415.539.1122 | C 858.922.2632

# 1104 BRYANT STREET

## PROPERTY SUMMARY

### ADDRESS

1104 Bryant Street, San Francisco, CA 94103

### AVAILABLE SPACE

+/- 1,500 Square Feet

### RENTAL RATE

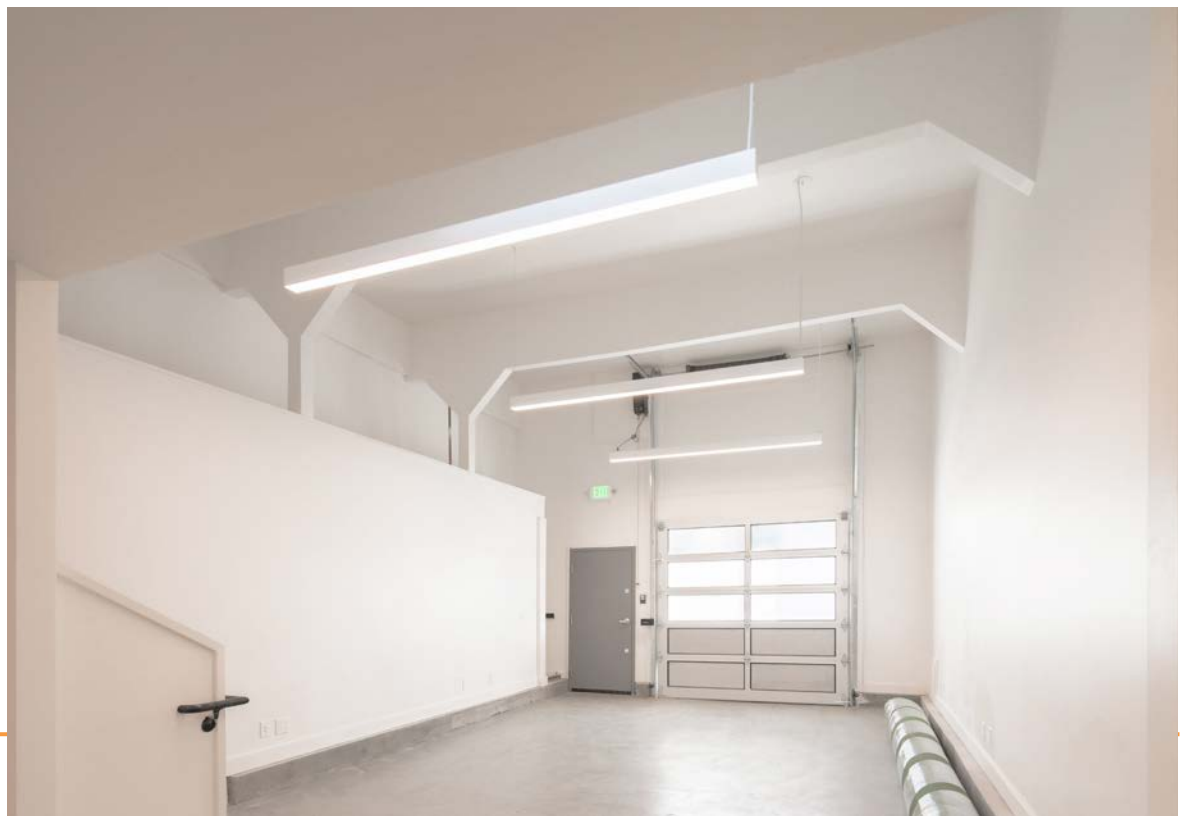
\$4,800 / Month, Industrial Gross

### AVAILABLE

Immediately

## BUILDING ATTRIBUTES

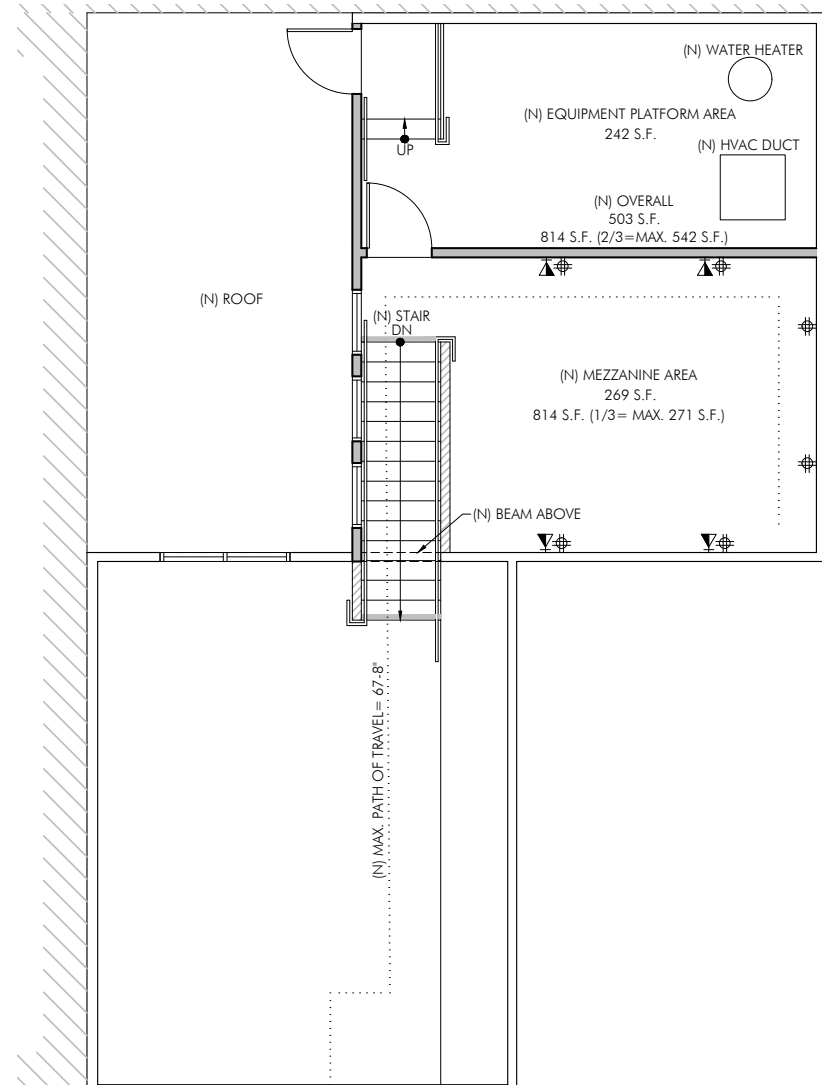
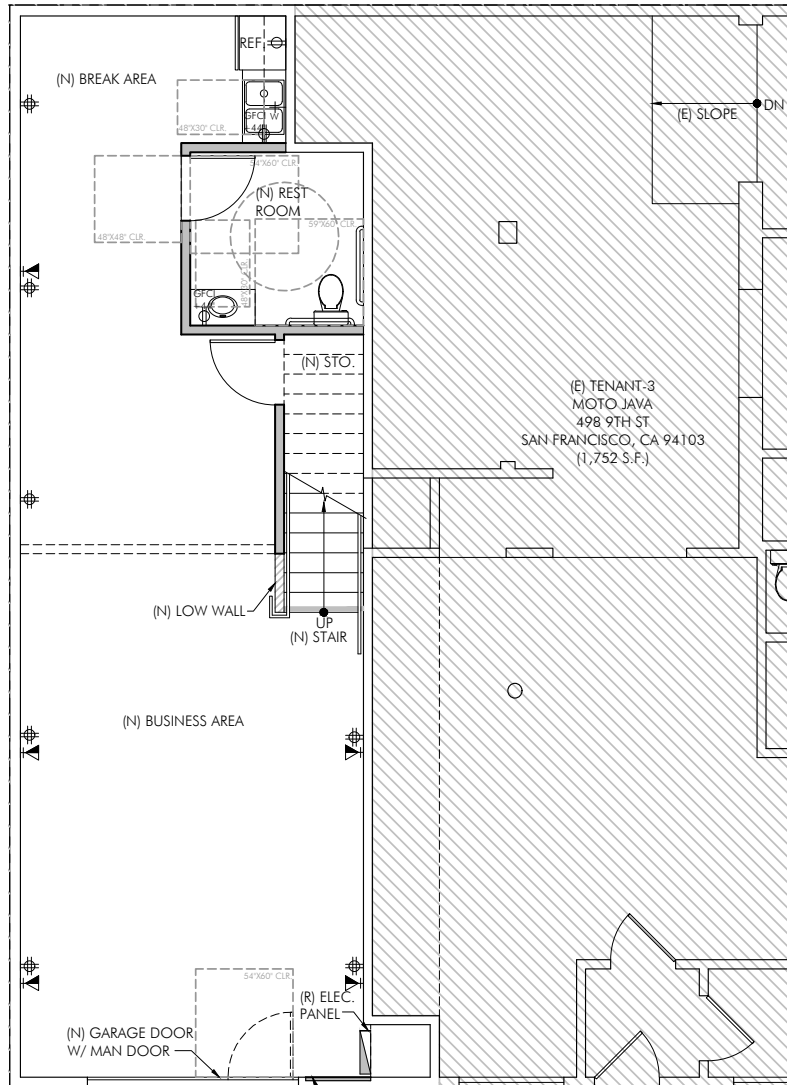
- + Newly Remodeled Flex Space in the Heart of SOMA
- + High Ceilings on Ground Level
- + Polished Concrete floors
- + One (1) Man Door & Automatic Roll-Up Door
- + Kitchenette
- + One (1) ADA Restroom
- + One Conference Room with Hardwood Floors
- + Exclusive Roof Deck



# 1104 BRYANT STREET

## Floor Plans

+/- 1,500 Square Feet



# 1104 BRYANT STREET

## LOCATION OVERVIEW

Desirable South of Market location, walkable to many nearby amenities and to the Mission District.



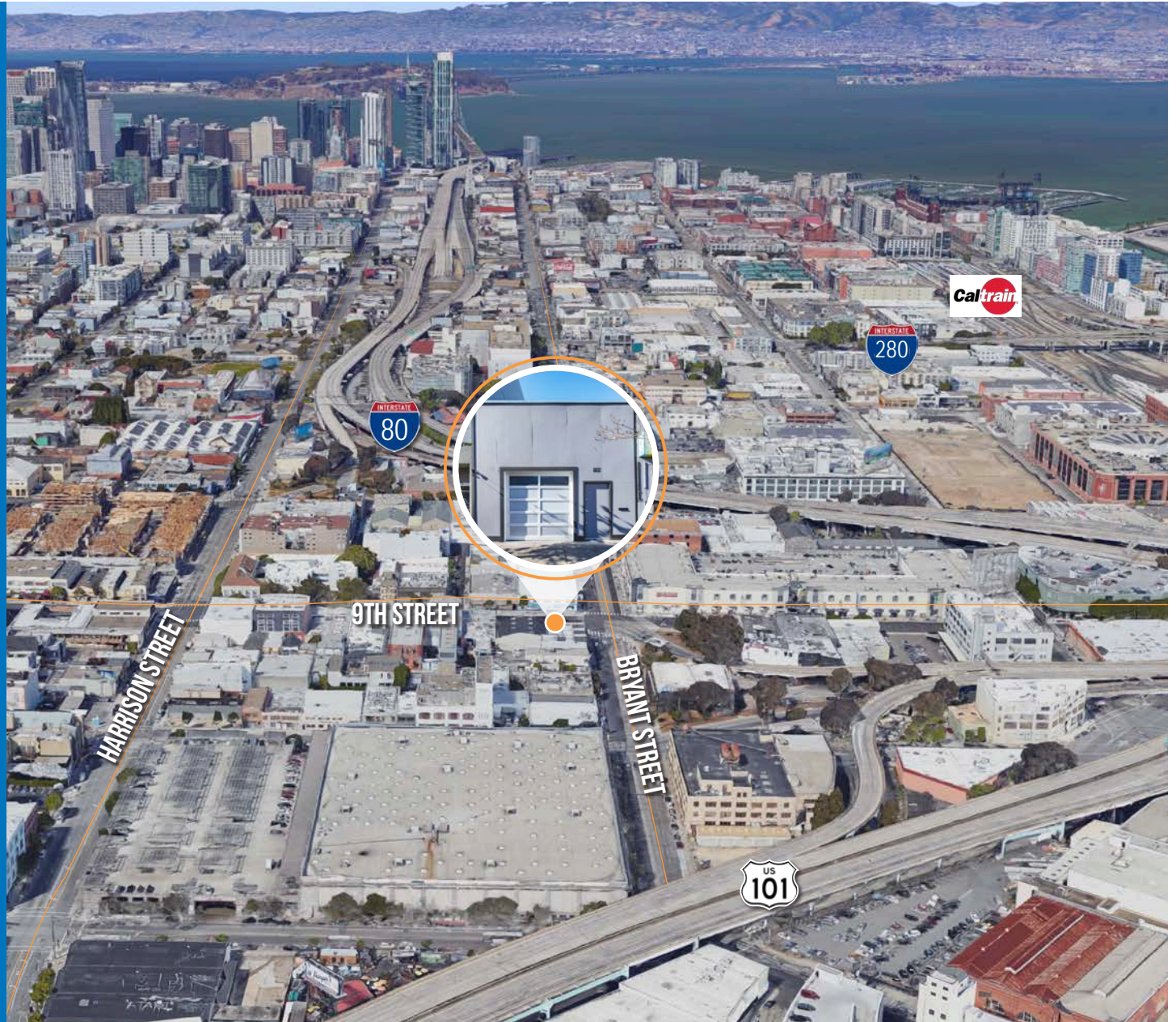
**15 MIN** to Civic Center Bart  
**20 MIN** to 4th St. Caltrain



**05 MIN** to Potrero Hill  
**07 MIN** to Mission District  
**10 MIN** to Financial District



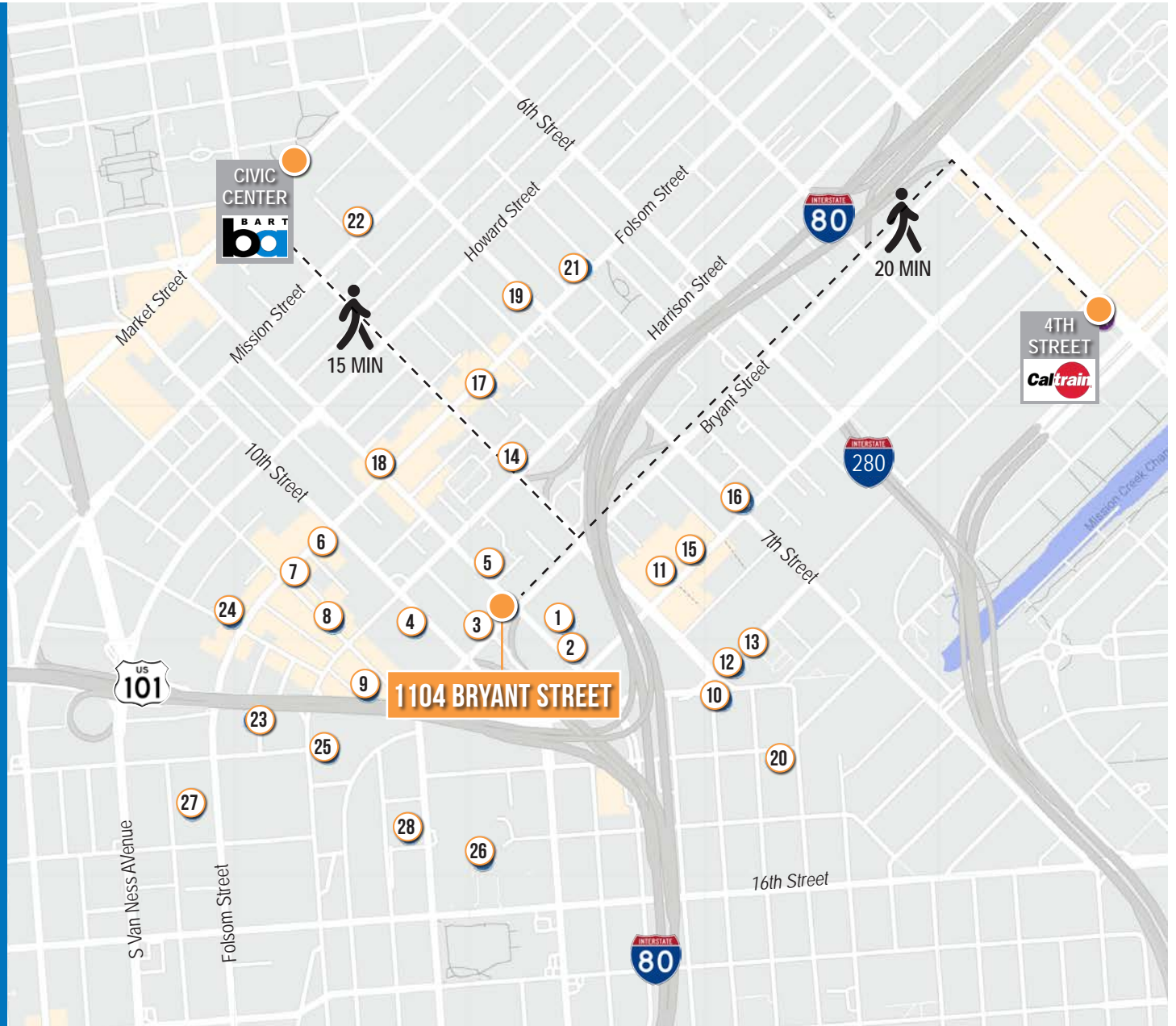
**02 MIN** to 101 On-Ramp  
**03 MIN** to 80 On-Ramp  
**04 MIN** to 280 On-Ramp



# 1104 BRYANT STREET

## NEARBY AMENITIES

- 1..... Trader Joe's
- 2..... Peet's Coffee
- 3..... Vaulins Taproom Wine Restaurant
- 4..... Costco Wholesale
- 5..... Clayroom SoMa
- 6..... Sextant Coffee Roasters
- 7..... Basil Canteen
- 8..... DNA Pizza
- 9..... Southern Accent Food Truck
- 10..... Niku Steakhouse
- 11..... Bellota
- 12..... Starbucks
- 13..... Okane
- 14..... AK Subs
- 15..... REI
- 16..... Mars Bar & Restaurant
- 17..... Basil
- 18..... Azúcar Lounge
- 19..... Sightglass Coffee
- 20..... Showplace East
- 21..... Deli Board
- 22..... City Beer Store
- 23..... Rainbow Grocery
- 24..... The Willows
- 25..... Best Buy
- 26..... Safeway
- 27..... Foods Co.
- 28..... Sports Basement Bryant Street



# 1104 BRYANT STREET



1104 BRYANT  
STREET



Corp. Lic. 01112906  
www.tcpre.com

### ZACH HAUPERT

D 415.539.1121 C 415.812.1219  
zhaupert@tcpre.com DRE # 01822907

### MICHAEL SANBERG

D 415.539.1103 C 415.697.6088  
msanberg@tcpre.com DRE # 01930041

### TREVOR GUDIM

D 415.539.1122 C 858.922.2632  
trevor@tcpre.com DRE # 01979980

This document has been prepared by Touchstone Commercial Partners for advertising and general information only. Touchstone Commercial Partners makes no guarantees, representations or warranties of any kind, expressed or implied, regarding the information including, but not limited to, warranties of content, accuracy and reliability. Any interested party should undertake their own inquiries as to the accuracy of the information. Touchstone Commercial Partners excludes unequivocally all inferred or implied terms, conditions and warranties arising out of this document and excludes all liability for loss and damages arising there from. This publication is the copyrighted property of Touchstone Commercial Partners and/or its licensor(s). ©2023. All rights reserved.