



SITE

FOR LEASE

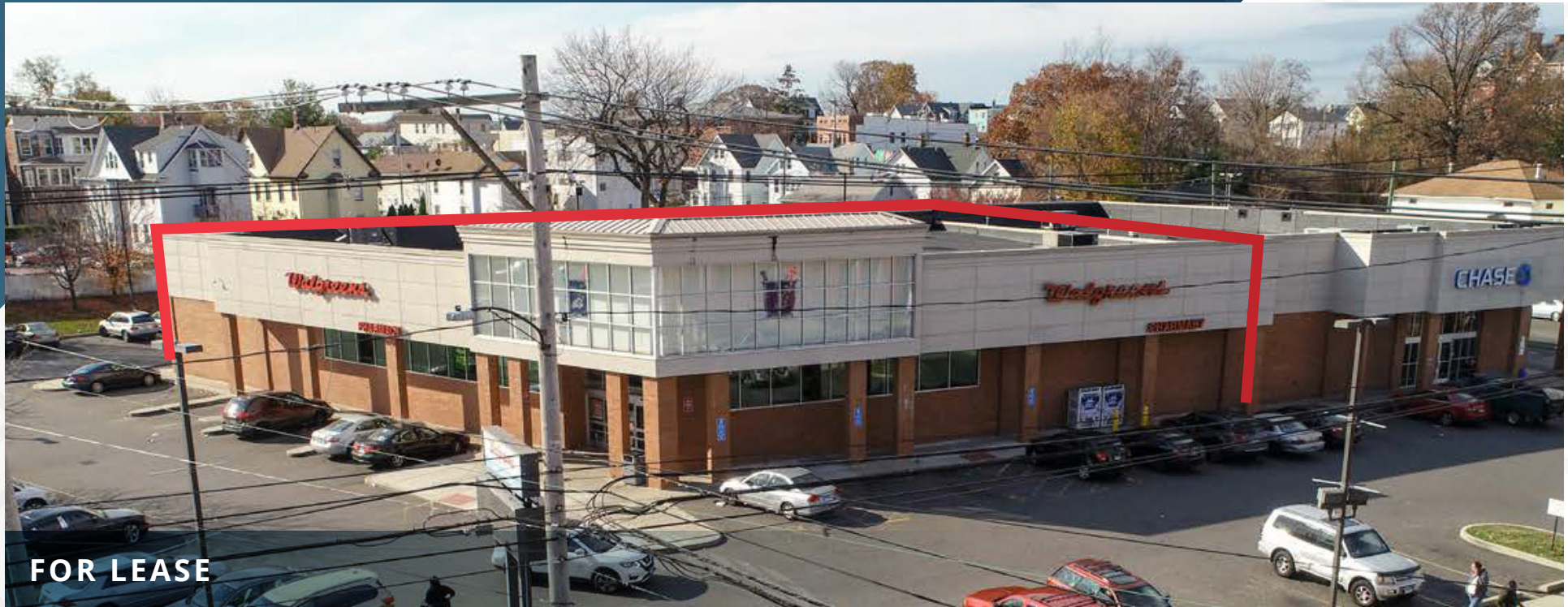
16,750 SF Corner Availability in Bridgeport, CT

960 North Avenue | Bridgeport, CT



16,750 SF Corner Availability in Bridgeport, CT

960 North Avenue | Bridgeport, CT 06606



16,750 SF
Ground Floor

TBD
Possession

Upon Request
Asking Rent

ABOUT THE PROPERTY

- High traffic corner of North Avenue (Route 1) and Main Street
- Excellent visibility and entrances on North Avenue and Main Street with ample parking
- Traffic count: 13,200 vehicles per day on North Avenue and 10,100 on Main Street
- Zoned MX2 - Mixed Use Centers: Commercial uses include, but are not limited to: Office, Retail & Entertainment, Consumer Service Indoor & Outdoor (Click for [LAND USE pg 24](#))

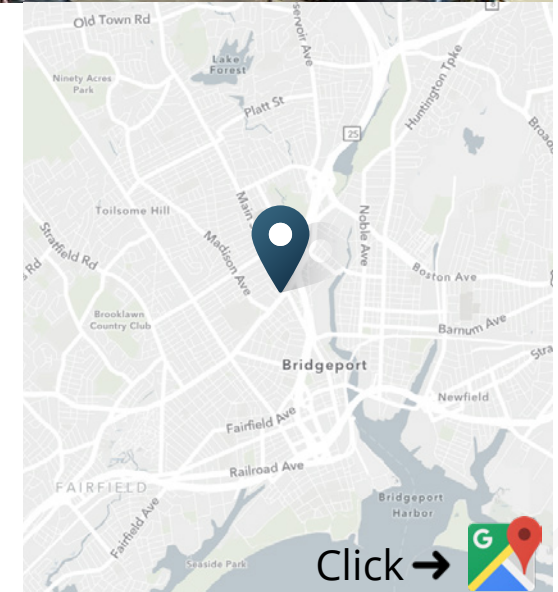
CONTACTS

Hugh Kelly

203.984.2999 | 212.710.5252
hugh.kelly@srsre.com

Dan Richman

917.926.1800 | 212.710.5253
dan.richman@srsre.com

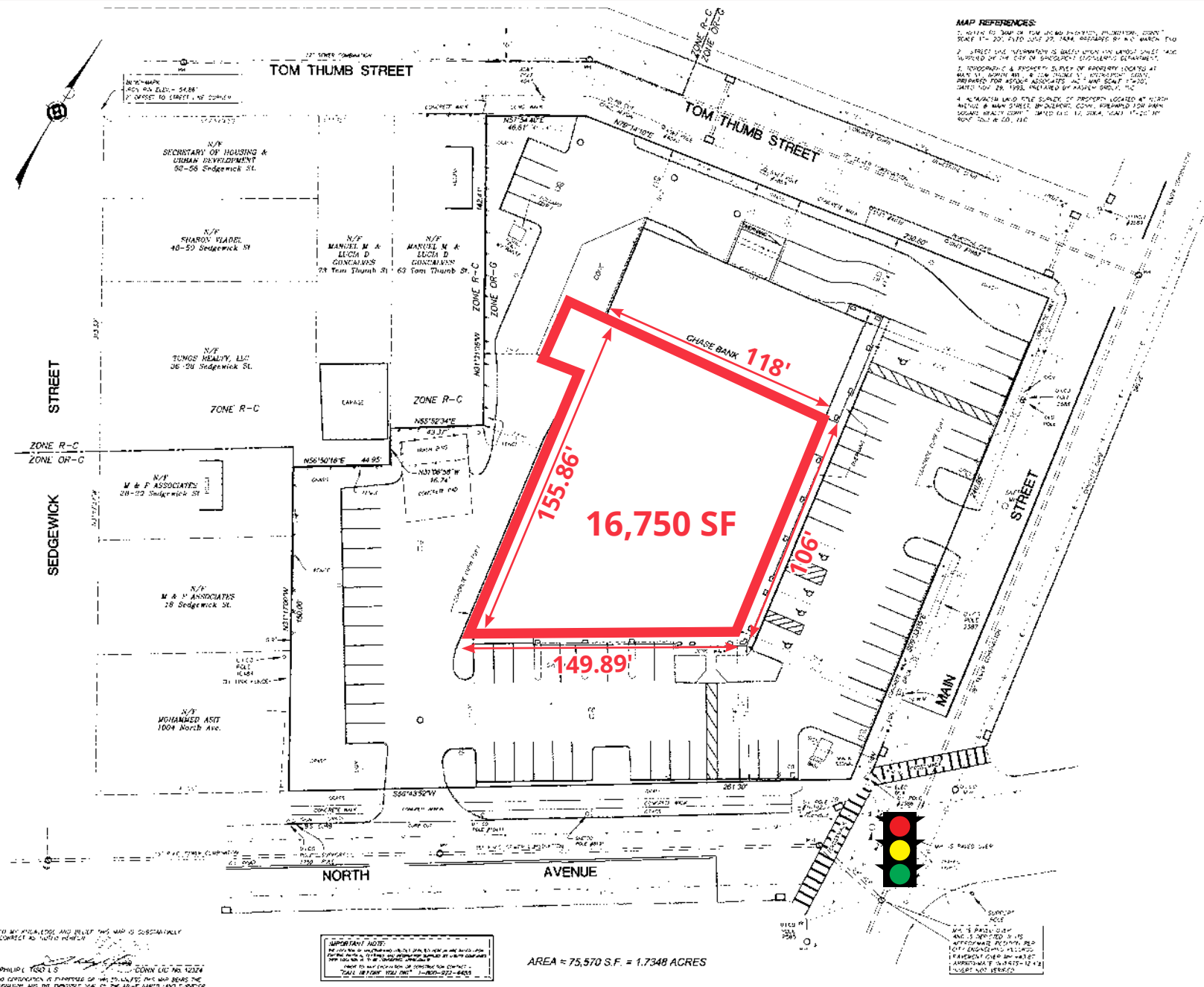


16,750 SF Corner Availability in Bridgeport, CT

960 North Avenue | Bridgeport, CT



960 North Avenue | Bridgeport, CT



960 North Avenue | Bridgeport, CT



Population

Population	1 Mile	3 Miles	5 Miles
20XX Estimated Population	45,351	186,363	273,608
20XX Projected Population	45,490	186,666	273,656
Projected Annual Growth 20XX to 20XX	0.06%	0.03%	0.00%

20XX Daytime Population	38,261	158,771	240,163
Workers	14,697	61,492	100,302
Residents	23,564	97,279	139,861

20XX Est. Average Household Income	\$67,082	\$86,578	\$113,927
20XX Est. Median Household Income	\$43,009	\$54,617	\$70,468

20XX Estimated Households	16,119	68,771	99,547
20XX Projected Households	16,353	69,703	100,696
Projected Annual Growth 20XX to 20XX	0.29%	0.27%	0.23%

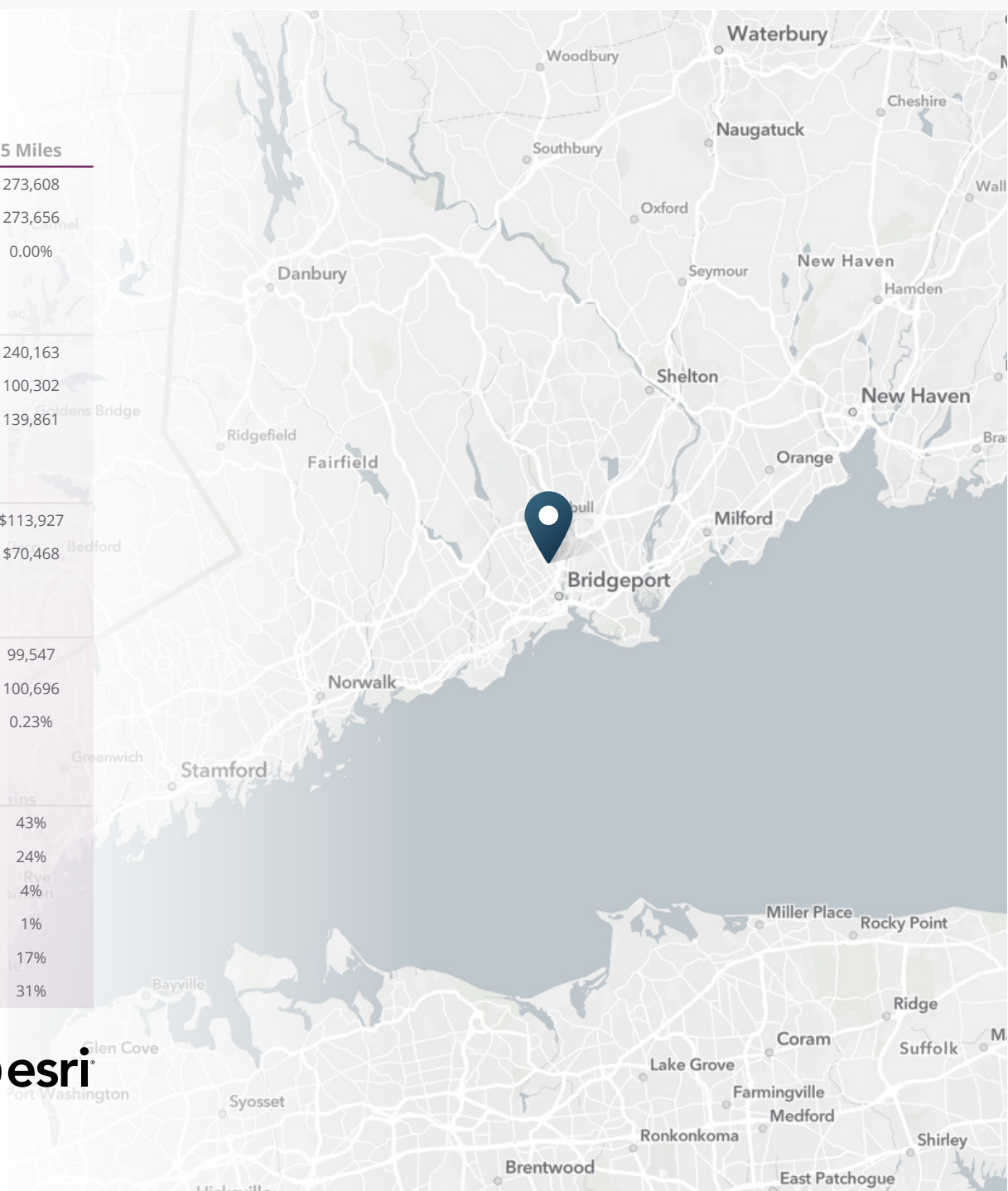
20XX Est. White	16%	29%	43%
20XX Est. Black or African American	34%	31%	24%
20XX Est. Asian or Pacific Islander	2%	4%	4%
20XX Est. American Indian or Native Alaskan	1%	1%	1%
20XX Est. Other Races	31%	22%	17%
20XX Est. Hispanic	49%	39%	31%

> **Want more?** Contact us for a complete demographic, foot-traffic, and mobile data insights report.

SOURCE



esri





SRS Real Estate Partners
340 Madison Avenue
New York, NY 10173
212.710.5250

Hugh Kelly
203.984.2999 | 212.710.5252
hugh.kelly@srsre.com

Dan Richman
917.926.1800 | 212.710.5253
dan.richman@srsre.com

SRSRE.COM

© SRS Real Estate Partners

The information presented was obtained from sources deemed reliable;
however SRS Real Estate Partners does not guarantee its completeness or accuracy.