

FOR LEASE



# Medical or Professional Office Space

2801 Freepoint Road, Natrona Heights, PA 15065



## Location Description

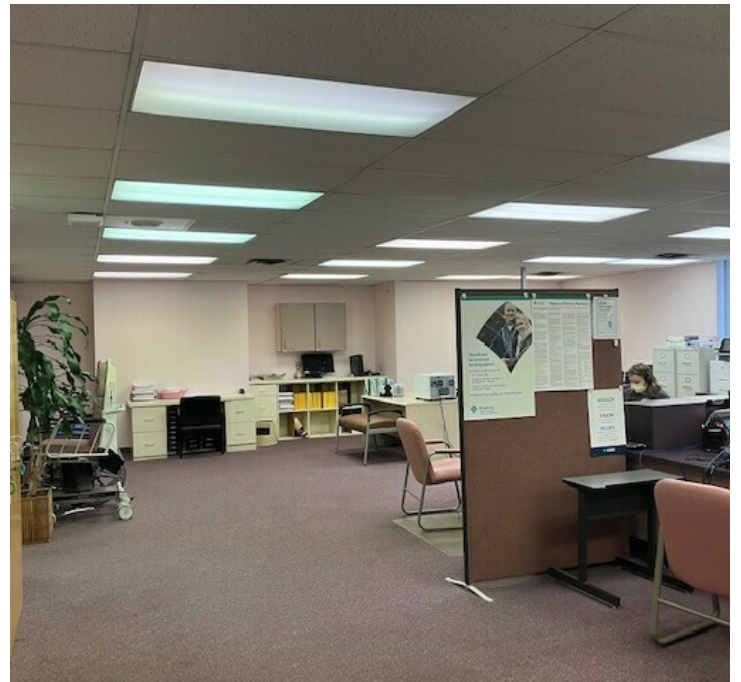
Located off of Route 28 with prime visibility and signage at corner.

## Property Highlights

- Up to 8,021 SF Available For Lease
- Elevator Access Between Floors
- Ample Parking (51 Spaces)

## Offering Summary

Lease Rate:	\$16.50/SF/yr
Floor 1:	6,786 SF
Floor 2:	1,235 SF
Building Size:	13,712 SF



## PRESENTED BY:

**BOB CORNELL**  
412.760.9999  
bcornell@penncom.com

**GENE GALIARDI**  
O:412.995.2232 | C:412.580.0636  
ggaliardi@penncom.com



**PENNSYLVANIA  
COMMERCIAL  
REAL ESTATE INC.**

FOR LEASE



# Medical or Professional Office Space

2801 Freeport Road, Natrona Heights, PA 15065



**PRESENTED BY:**

**BOB CORNELL**

412.760.9999

bcornell@penncom.com

**GENE GALIARDI**

O:412.995.2232 | C:412.580.0636

ggaliardi@penncom.com



**PENNSYLVANIA  
COMMERCIAL  
REAL ESTATE INC.**

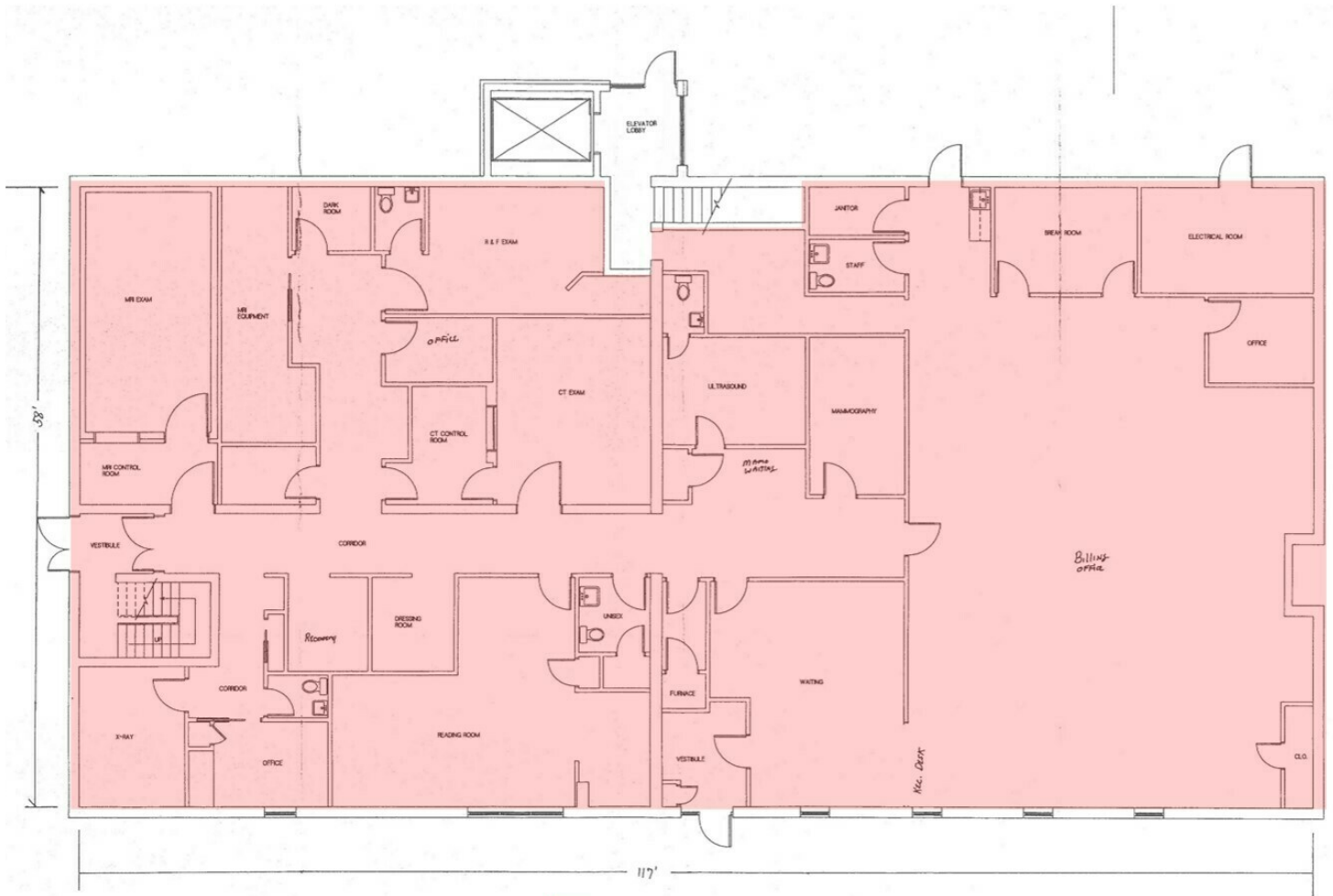
FOR LEASE



# Medical or Professional Office Space

2801 Freepoint Road, Natrona Heights, PA 15065

## FIRST FLOOR PLAN



EXISTING LOWER FLOOR PLAN  
1/4"=1'-0" 6,786 SQ. FT. 1st Floor + ELEVATOR HOOP OF 140 SQ. FT.

AVAILABLE SPACE: 6,786 SF

**PRESENTED BY:**

**BOB CORNELL**  
412.760.9999  
bcornell@penncom.com

**GENE GALIARDI**  
O:412.995.2232 | C:412.580.0636  
ggaliardi@penncom.com



**PENNSYLVANIA  
COMMERCIAL  
REAL ESTATE INC.**

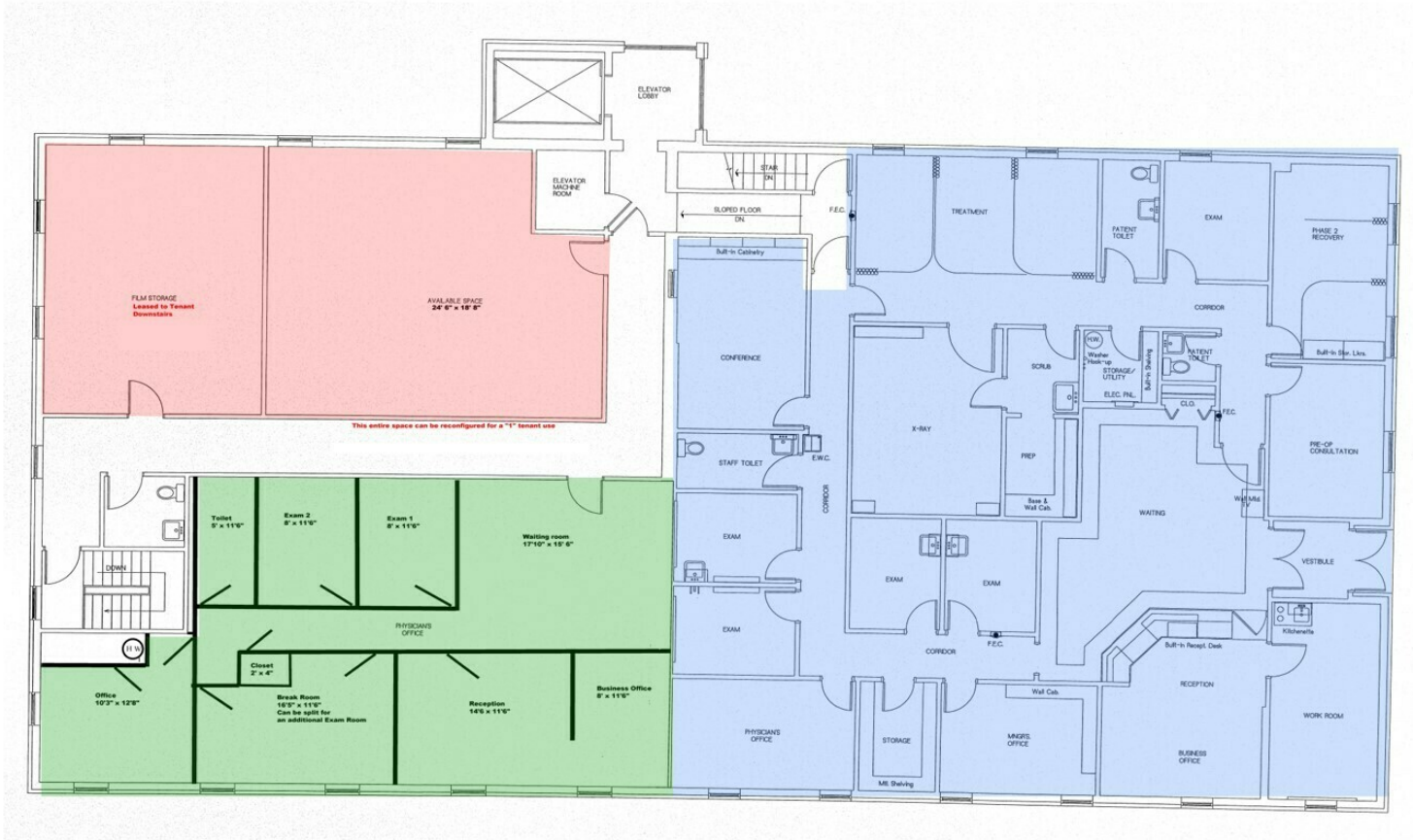
FOR LEASE



# Medical or Professional Office Space

2801 Freepoint Road, Natrona Heights, PA 15065

## SECOND FLOOR PLAN



- AVAILABLE SPACE: 1,235 SF
- Allegheny Health Network (Allie-Kiski Medical Center)
- Emerest Health

**PRESENTED BY:**

**BOB CORNELL**  
412.760.9999  
bcornell@penncom.com

**GENE GALIARDI**  
O:412.995.2232 | C:412.580.0636  
ggaliardi@penncom.com



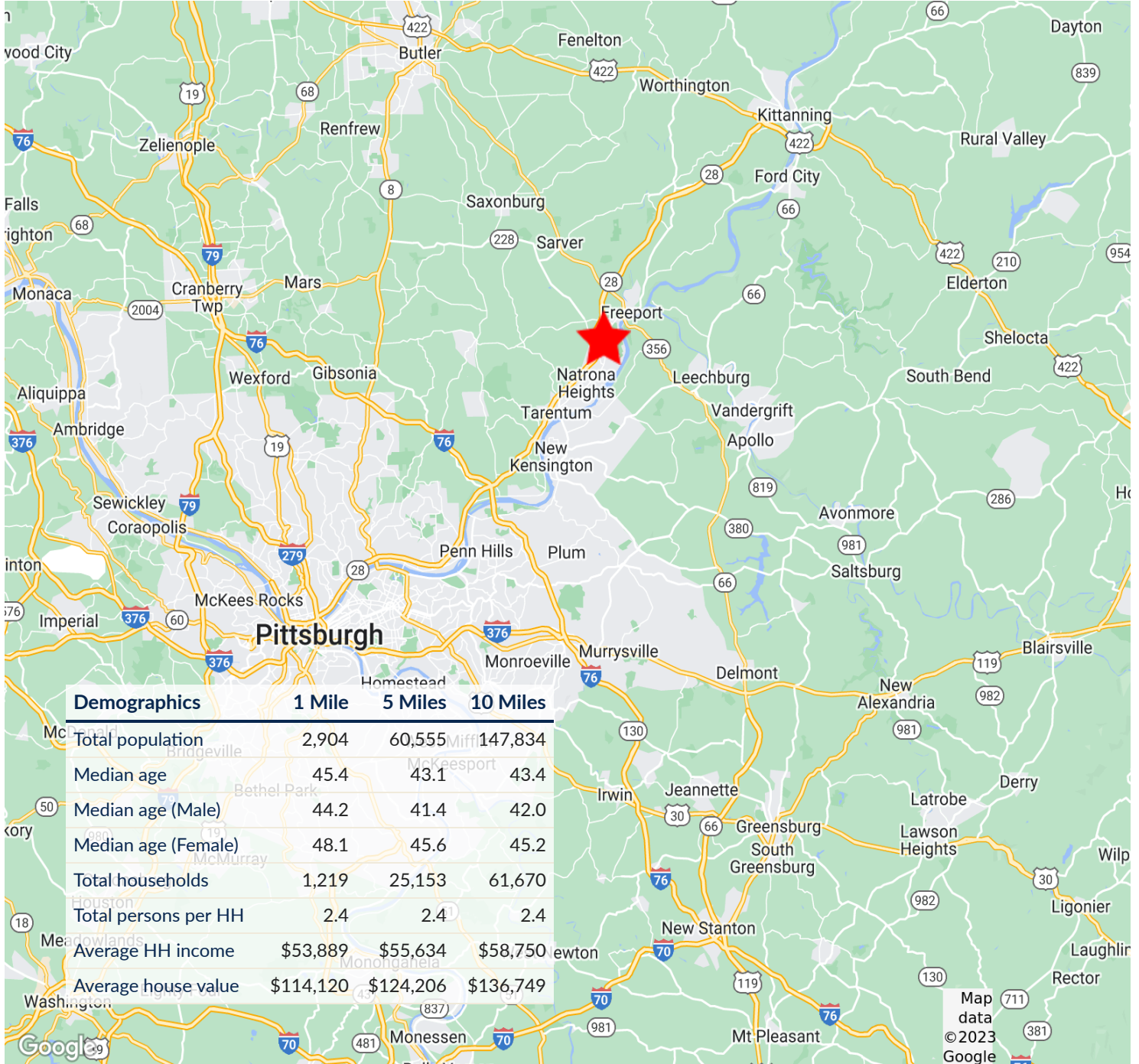
**PENNSYLVANIA  
COMMERCIAL  
REAL ESTATE INC.**

FOR LEASE



# Medical or Professional Office Space

2801 Freeport Road, Natrona Heights, PA 15065



**PRESENTED BY:**

**BOB CORNELL**

412.760.9999

bcornell@penncom.com

**GENE GALIARDI**

O:412.995.2232 | C:412.580.0636

ggaliardi@penncom.com



**PENNSYLVANIA  
COMMERCIAL  
REAL ESTATE INC.**