

# 119 CHERRY HILL ROAD

Parsippany-Troy Hills, NJ 07054

Office For Lease

1,812 - 32,110 SF



Leasing Information:  
973.599.0050

## Lincoln

<b>Rick Genthe</b>	<b>Robert Lee</b>	<b>Sean O'Brien</b>
973.599.0050	973.599.0050	973.599.0050
<a href="mailto:Rgenthe@lpc.com">Rgenthe@lpc.com</a>	<a href="mailto:rlee@lpc.com">rlee@lpc.com</a>	<a href="mailto:sobrien@lpc.com">sobrien@lpc.com</a>

Lincoln Property Company  
9 Entin Road Suite 103  
Parsippany, NJ 07054

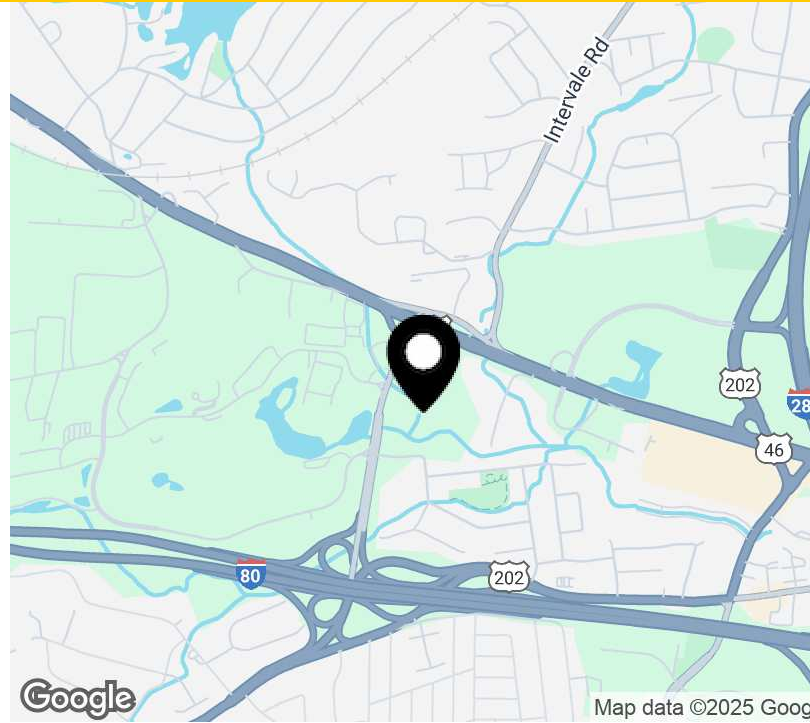
[www.lpc.com](http://www.lpc.com)



# 119 CHERRY HILL ROAD

Parsippany-Troy Hills, NJ 07054

Office For Lease



## Property Highlights

- Centrally located & excellent access off I-80, I-287, Rt 46 & Rt 202
- Building overlooks scenic pond with outdoor seating areas
- Some suites are offered with balconies
- Abundant Parking
- On-site building engineer
- Flexible floor plates
- 24/7 Building Access

## Property Overview

119 Cherry Hill Road is part of a two-building complex, offering a wide range of space available in a park like setting. Perfectly located directly off I-80 at Exit 42 (Cherry Hill Road). A Three story, 89,314 square foot office building with flexible floor plates. 99 Cherry Hill Road additionally offers immediate access to the I-80 & I-287 interchange, approximately 1 mile to the East along with Rt 46 & 202. Offering proximity to several hotels, restaurants, & shopping as well as St. Clare's Hospital – Denville (3.6 miles) & Morristown Memorial Hospital (~8.2 miles).

Availabilities	SF	Lease Rate	Date Available
Suite 230	4,490 SF	\$22.50 G	Immediately
Suite 300	13,501 - 32,110 SF	\$22.50 G	Immediately
Suite 305	2,114 - 32,110 SF	\$22.50 G	Immediately
Suite 315	7,456 - 32,110 SF	\$22.50 G	Immediately
Suite 320	1,812 - 32,110 SF	\$22.50 G	Immediately
Suite 330	7,227 - 32,110 SF	\$22.50 G	Immediately

**Rick Genthe**

973.599.0050  
Rgenthe@lpc.com

**Robert Lee**

973.599.0050  
rlee@lpc.com

**Sean O'Brien**

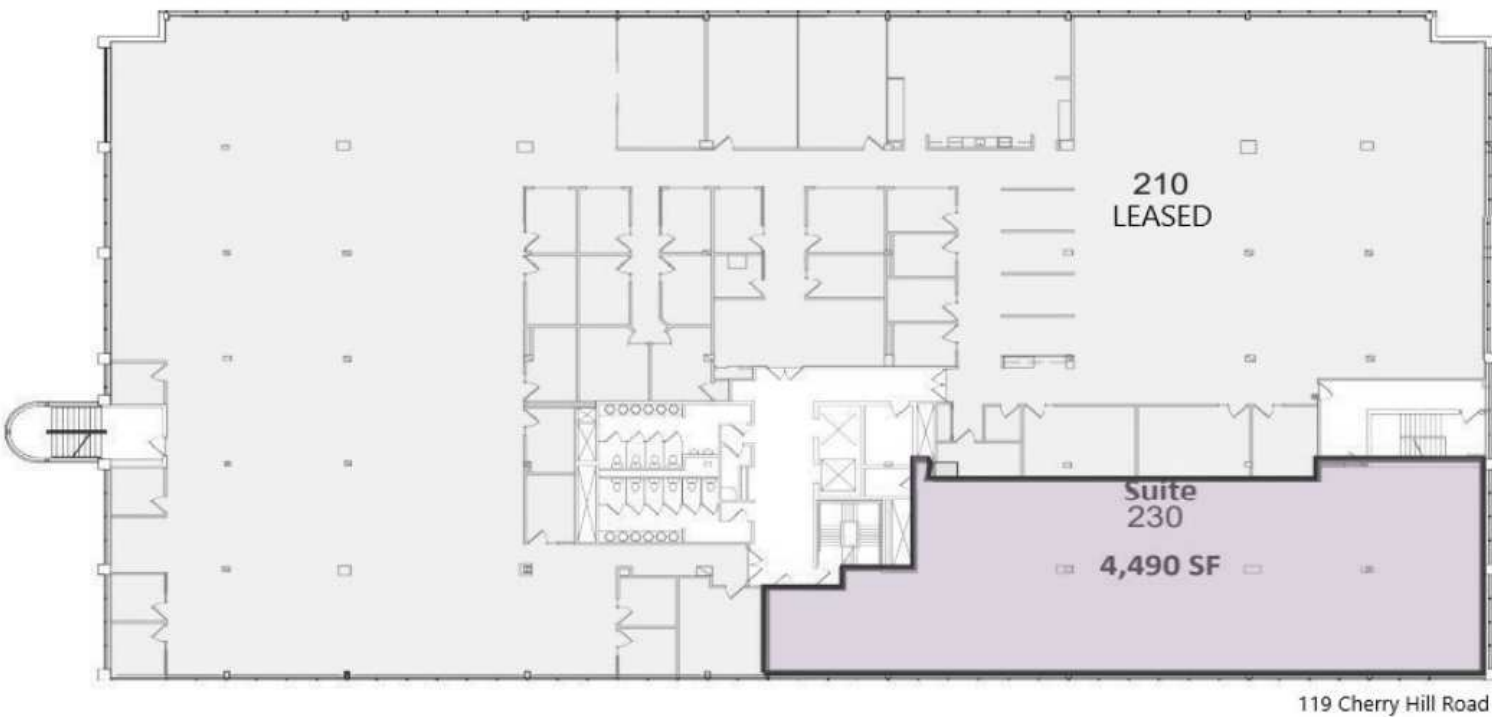
973.599.0050  
sobrien@lpc.com

**Lincoln**

# 119 CHERRY HILL ROAD

2nd Floor

Parsippany-Troy Hills, NJ 07054



Suite	Size	Lease Rate	Description
■ Suite 230	4,490 SF	\$22.50 G	Mix of layout

**Rick Genthe**  
973.599.0050  
Rgenthe@lpc.com

**Robert Lee**  
973.599.0050  
rlee@lpc.com

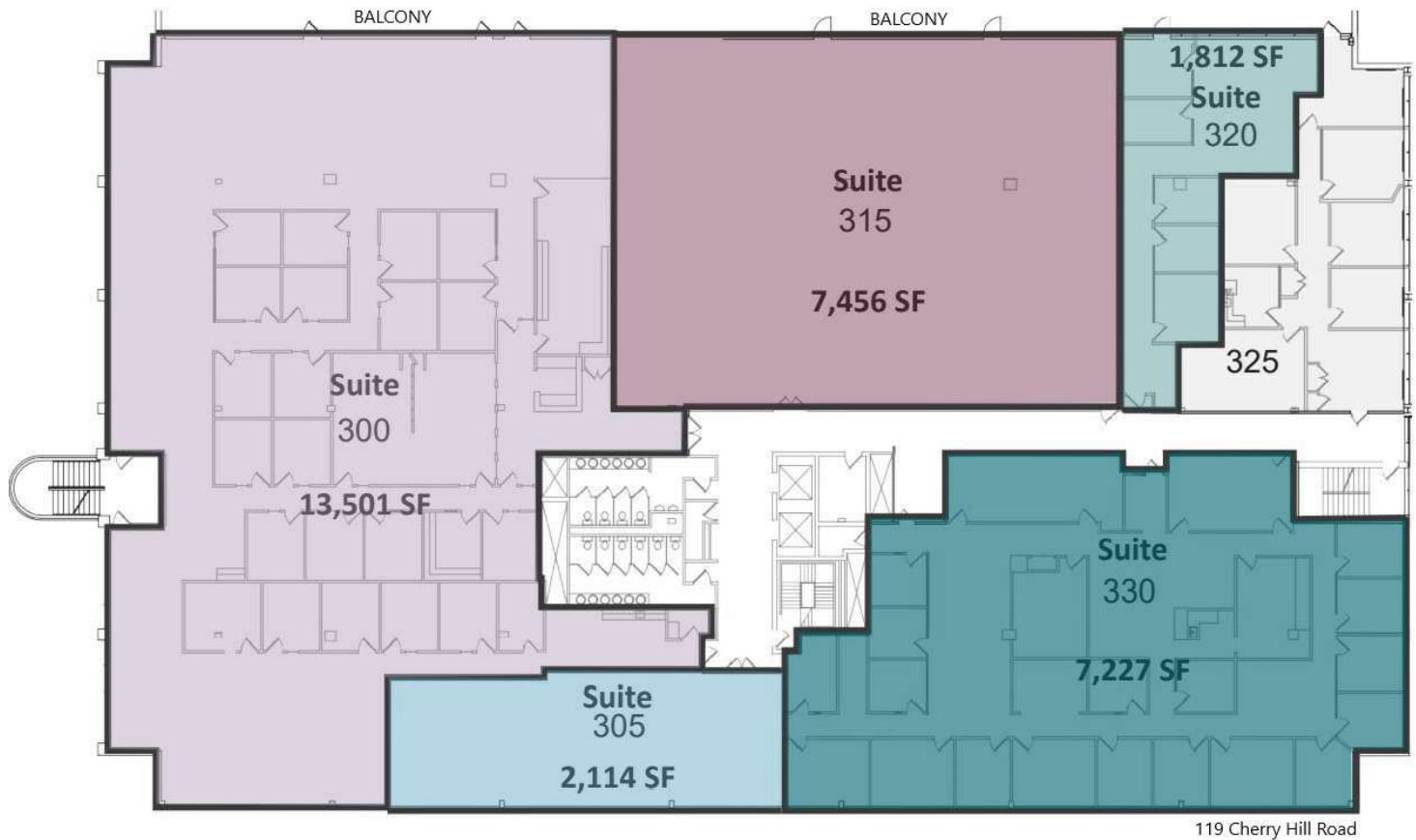
**Sean O'Brien**  
973.599.0050  
sobrien@lpc.com

Lincoln

# 119 CHERRY HILL ROAD

3rd Floor

Parsippany-Troy Hills, NJ 07054



	Suite	Size	Lease Rate	Description
■	Suite 300	13,501 - 32,110 SF	\$22.50 G	Mix of layout
■	Suite 305	2,114 - 32,110 SF	\$22.50 G	Mix of layout
■	Suite 315	7,456 - 32,110 SF	\$22.50 G	Mix of layout
■	Suite 320	1,812 - 32,110 SF	\$22.50 G	Mix of layout
■	Suite 330	7,227 - 32,110 SF	\$22.50 G	Mix of layout

**Rick Genthe**

973.599.0050  
Rgenthe@lpc.com

**Robert Lee**

973.599.0050  
rlee@lpc.com

**Sean O'Brien**

973.599.0050  
sobrien@lpc.com

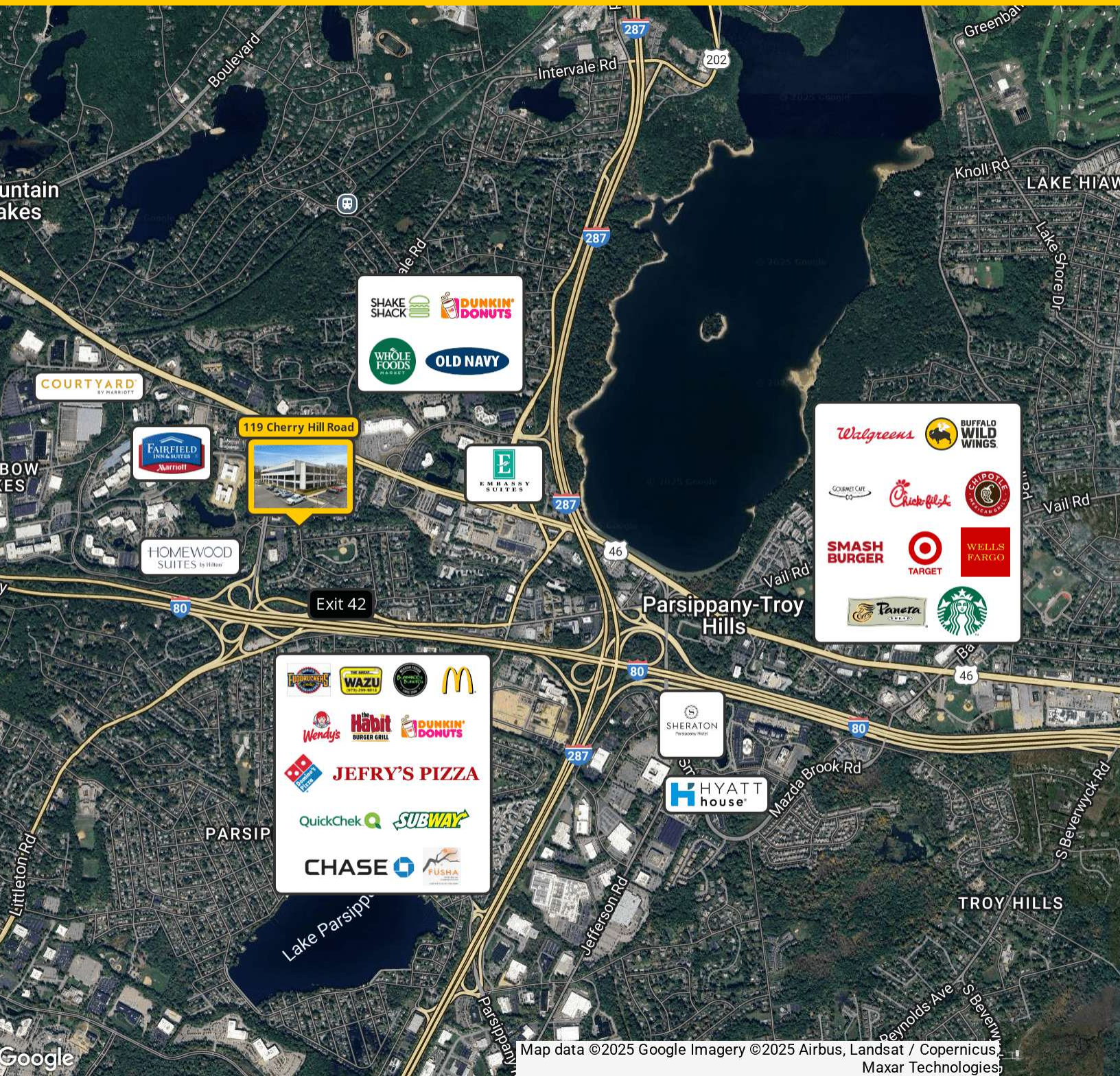
**Lincoln**



# 119 CHERRY HILL ROAD

## Location Map

Parsippany-Troy Hills, NJ 07054



**Rick Genthe**  
973.599.0050  
Rgenthe@lpc.com

**Robert Lee**  
973.599.0050  
rlee@lpc.com

**Sean O'Brien**  
973.599.0050  
sobrien@lpc.com

# Lincoln





# 119 CHERRY HILL ROAD

Parsippany-Troy Hills, NJ 07054

Leasing Information:  
973.599.0050

**Rick Genthe**  
973.599.0050  
Rgenthe@lpc.com

**Robert Lee**  
973.599.0050  
rlee@lpc.com

**Sean O'Brien**  
973.599.0050  
sobrien@lpc.com

## Lincoln

Lincoln Property Company  
9 Entin Road Suite 103  
Parsippany, NJ 07054

[www.lpc.com](http://www.lpc.com)