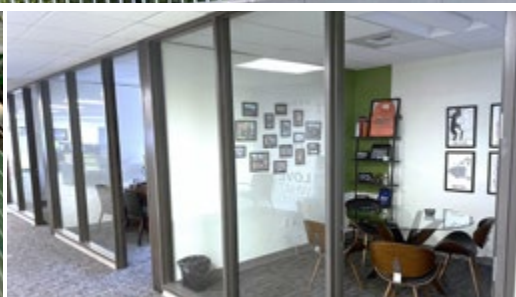


THE CLOVER BUILDING

14450 NORTHEAST 29TH PLACE, BELLEVUE, WA 98007



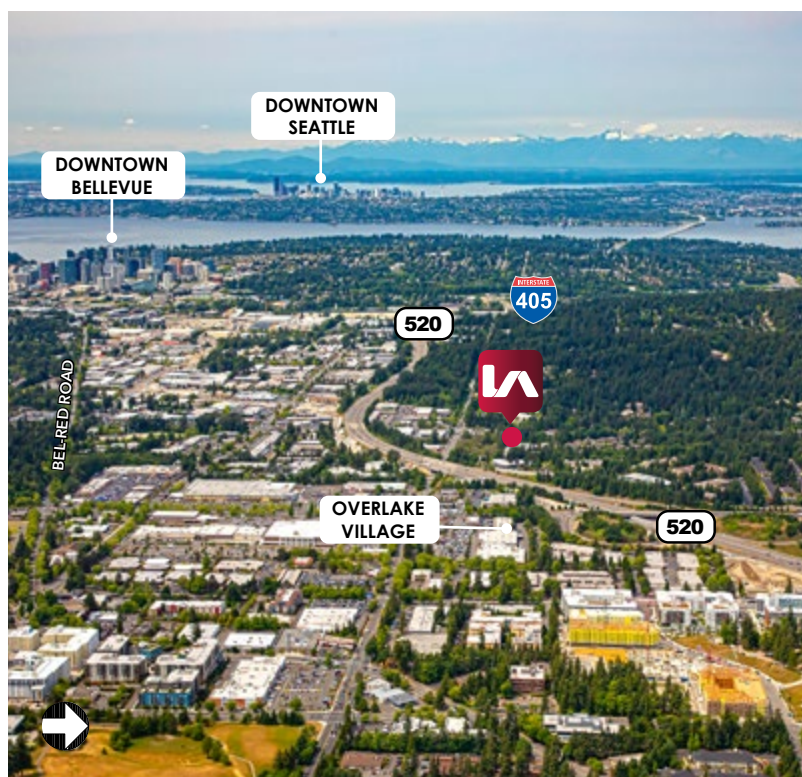
AVAILABLE SUITES

\$35.00 Base Year

SUITE 104:	2,929 SF
SUITE 106:	6,321 SF
SUITES 104 AND 106 COMBINED:	9,250 SF
SUITE 114:	2,197 SF
SUITE 116:	2,517 SF
SUITE 120:	2,421 SF
SUITE 200:	16,307 SF

COMMENTS

- » Building signage with high visibility from WA- 520 available
- » Fitness facility with showers and locker rooms on basement level (open 24/7)
- » Basement storage available



THE CLOVER BUILDING

14450 NORTHEAST 29TH PLACE, BELLEVUE, WA 98007



AVAILABLE SPACES

SUITE	SIZE (SF)	LEASE TYPE	LEASE RATE
Suite 104	2,929	Base Year	\$35.00 SF/yr
Suite 106	6,321	Base Year	\$35.00 SF/yr
Suites 104 and 106 can be combined for a total of:	9,250 SF		
Suite 114	2,197	Base Year	\$35.00 SF/yr
Suite 116	2,517	Base Year	\$35.00 SF/yr
Suite 120	2,421	Base Year	\$35.00 SF/yr

CONTACT

Aaron Mathieu

amathieu@lee-associates.com

C 206.948.4670

Troy Gessel

tgessel@lee-associates.com

C 425.301.4422

All information furnished regarding property for sale, rental or financing is from sources deemed reliable, but no warranty or representation is made to the accuracy thereof and same is submitted to errors, omissions, change of price, rental or other conditions prior to sale, lease or financing or withdrawal without notice. No liability of any kind is to be imposed on the broker herein.

THE CLOVER BUILDING

14450 NORTHEAST 29TH PLACE, BELLEVUE, WA 98007



AVAILABLE SPACES

SUITE	SIZE (SF)	LEASE TYPE	LEASE RATE
Suite 200	16,307	Base Year	\$35.00 SF/yr

CONTACT

Aaron Mathieu

amathieu@lee-associates.com

C 206.948.4670

Troy Gessel

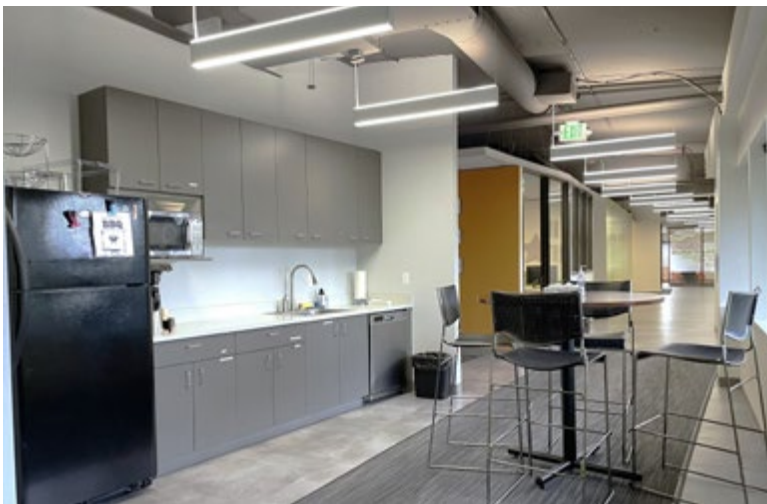
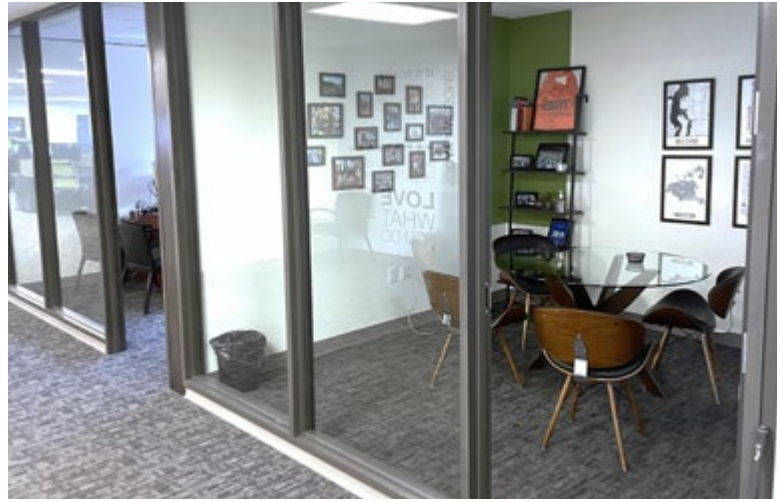
tgessel@lee-associates.com

C 425.301.4422

All information furnished regarding property for sale, rental or financing is from sources deemed reliable, but no warranty or representation is made to the accuracy thereof and same is submitted to errors, omissions, change of price, rental or other conditions prior to sale, lease or financing or withdrawal without notice. No liability of any kind is to be imposed on the broker herein.

THE CLOVER BUILDING

14450 NORTHEAST 29TH PLACE, BELLEVUE, WA 98007



CONTACT

Aaron Mathieu

amathieu@lee-associates.com

C 206.948.4670

Troy Gessel

tgessel@lee-associates.com

C 425.301.4422

All information furnished regarding property for sale, rental or financing is from sources deemed reliable, but no warranty or representation is made to the accuracy thereof and same is submitted to errors, omissions, change of price, rental or other conditions prior to sale, lease or financing or withdrawal without notice. No liability of any kind is to be imposed on the broker herein.