



MAM
COMMERCIAL
A MEDICAL ASSET MANAGEMENT COMPANY



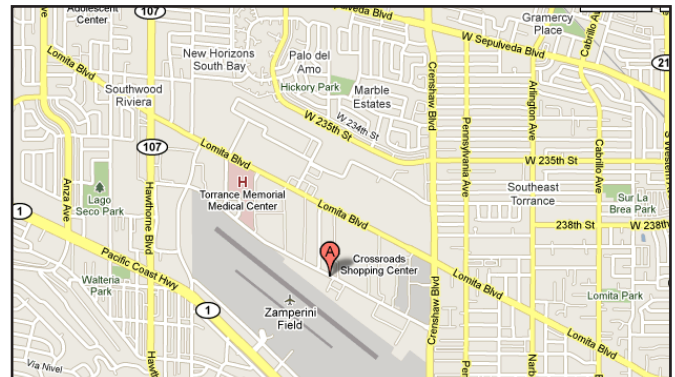
Skypark Atrium | 2790 Skypark Drive | Torrance, CA Office Suites For Lease

Available Suites	Rentable SF	Rental Rates
Suite 206 *Furnished & Move-in Ready	812 RSF	\$2.60 FSG
Suite 305	1,922 RSF	\$2.60 FSG

Features

Low density garden style office with shaded seating areas, fountain, and exterior corridors & stairwells
On-site janitorial and management office
Professionally managed with ample **free parking**
Minutes away from Palos Verdes Peninsula
Adjacent to South End Racquet and Health Club
Security Camera System

Term 3 to 10 years



Contact

Annie Cunningham Veris
(310) 517-4872
anniec@medicalasset.com
DRE#: 02149965

Mitch Yankowitz
(310) 517-4861
mitchy@medicalasset.com
DRE#: 01360137

www.medicalasset.com

South Bay
201 Continental Blvd., Ste. 210
El Segundo, CA 90245

Downtown Los Angeles
1400 S. Grand Ave., Ste. 808
Los Angeles, CA 90015

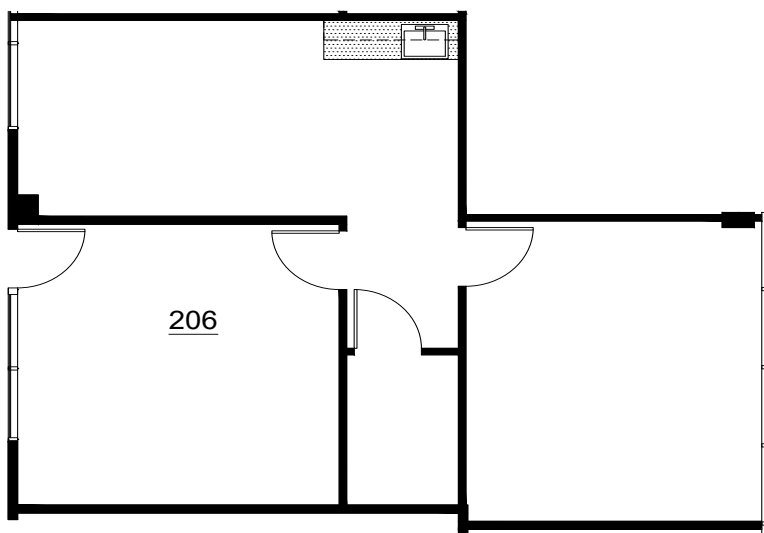
San Fernando Valley
5411 Etiwanda Ave., Ste. 208
Tarzana, CA 91356

Torrance
2790 Skypark Dr., Ste. 107
Torrance, CA 90505



Skypark Atrium | 2790 Skypark Drive | Floor Plans

Suite 206
812 RSF



Suite 305
1,922 RSF

