



## 2820 E Rock Haven Rd

Harrisonville, Missouri

### Property Features

- 1,500-17,500 SF for lease
- On campus location supporting Cass Regional Medical Center
- 75,000 patient visits per year, 400 employee hospital
- Aggressive Remodel Allowances
- Professionally managed, first class common area finishes

### DEMOGRAPHICS

	Cass County
Estimated Population:	111,440
Median Household Income:	\$83,054
Median Age:	40.5
Total Households:	42,580

For more information:

**Mike Sonnenberg, CCIM**

+1 913 956 5812 • [mike@nai-heartland.com](mailto:mike@nai-heartland.com)

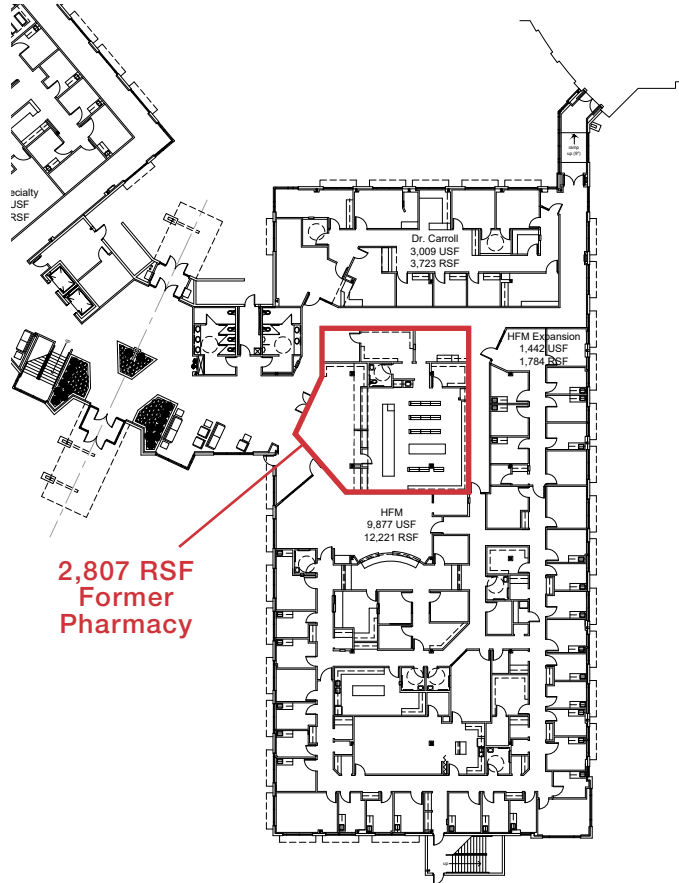


NO WARRANTY OR REPRESENTATION, EXPRESS OR IMPLIED, IS MADE AS TO THE ACCURACY OF THE INFORMATION CONTAINED HEREIN, AND THE SAME IS SUBMITTED SUBJECT TO ERRORS, OMISSIONS, CHANGE OF PRICE, RENTAL OR OTHER CONDITIONS, PRIOR SALE, LEASE OR FINANCING, OR WITHDRAWAL WITHOUT NOTICE, AND OF ANY SPECIAL LISTING CONDITIONS IMPOSED BY OUR PRINCIPALS NO WARRANTIES OR REPRESENTATIONS ARE MADE AS TO THE CONDITION OF THE PROPERTY OR ANY HAZARDS CONTAINED THEREIN ARE ANY TO BE IMPLIED.

4400 College Boulevard, Suite 170  
Overland Park, Kansas 66211  
+1 913 956 1000

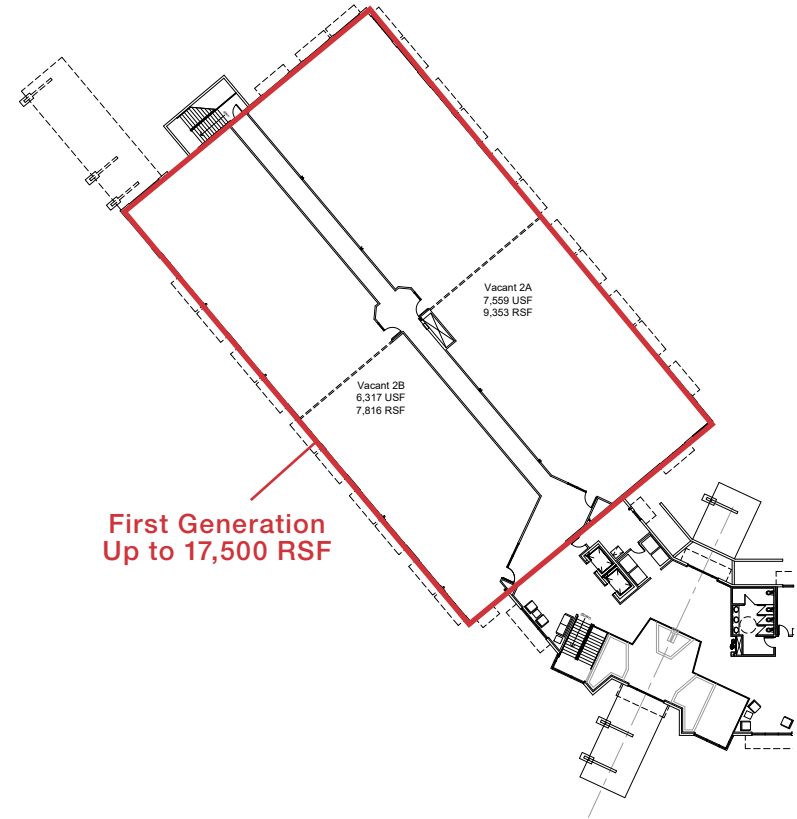
[nai-heartland.com](http://nai-heartland.com)

## First Floor East



**2,807 RSF  
Former  
Pharmacy**

## Second Floor West



**First Generation  
Up to 17,500 RSF**