



OFFICE BUILDING FOR LEASE

One Harbor Center

ONE HARBOR CENTER SUITE #350
SUISUN CITY, CA 94585



THE WISEMAN COMPANY
DEVELOPMENT INVESTMENT MANAGEMENT BROKERAGE

707.427.1212

www.WisemanCo.com

Executive Summary



PROPERTY SUMMARY

Available SF:	2,949 SF
Lease Rate:	Negotiable
Lot Size:	3.11 Acres
Building Size:	50,000 SF
Building Class:	A
Ceiling Height:	9.5 FT
Year Built:	2001
Renovated:	2016
Zoning:	BCD
Market:	North Bay
Sub Market:	Fairfield/Suisun
Cross Streets:	Main Street

CHRIS ECONOMOU

Director of Acquisitions and Leasing
707.427.1212
ceconomou@wisemanco.com

PROPERTY OVERVIEW

Beautiful 3rd floor views, ample natural light with a mixture of five private offices and plenty of open "bullpen" space. A break room is included in the space along with large area for storage. Space can be reconfigured to meet Tenant's needs. This space is suitable for a professional firm desiring a Class A building or a technology firm looking for a great collaborative environment in a high energy workspace.

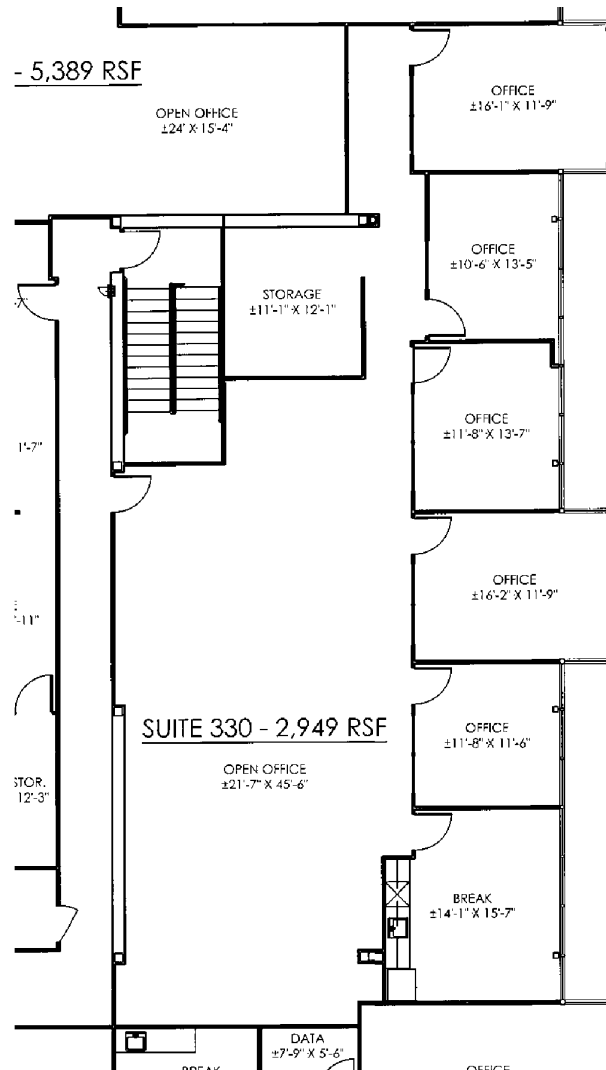
Suisun is a hidden gem, below are some highlights of the area:

PROPERTY HIGHLIGHTS

- 5 minutes from Fairfield and major Solano County business district.
- Excellent visibility and immediate access from Hwy 12 and Interstate 80
- Amtrak station directly across the street, with 9 daily Capital Corridor commuter train stops
- Breathtaking views of the Harbor, the Delta, and Mt. Diablo
- Many shops and restaurants
- Modern, state-of-the-art offices
- Abundant parking
- Ample facilities for boating and water sports
- Very close proximity to growing Solano County Economic trends
- Quick and easy access to the 12 freeway
- Plenty of amenities such as restaurants and theater
- Restaurants include Chianti Osteria, Cast Iron Grill and Bar and Athenian Grill among others.

Suite 350 Floor Plan

One Harbor
Center
Suite 350



CHRIS ECONOMOU
Director of Acquisitions and Leasing
707.427.1212
ceconomou@wisemanco.com



Beautiful Park with Palm Trees, Benches and Sweeping Water Views



CHRIS ECONOMOU
Director of Acquisitions and Leasing
707.427.1212
ceconomou@wisemanco.com



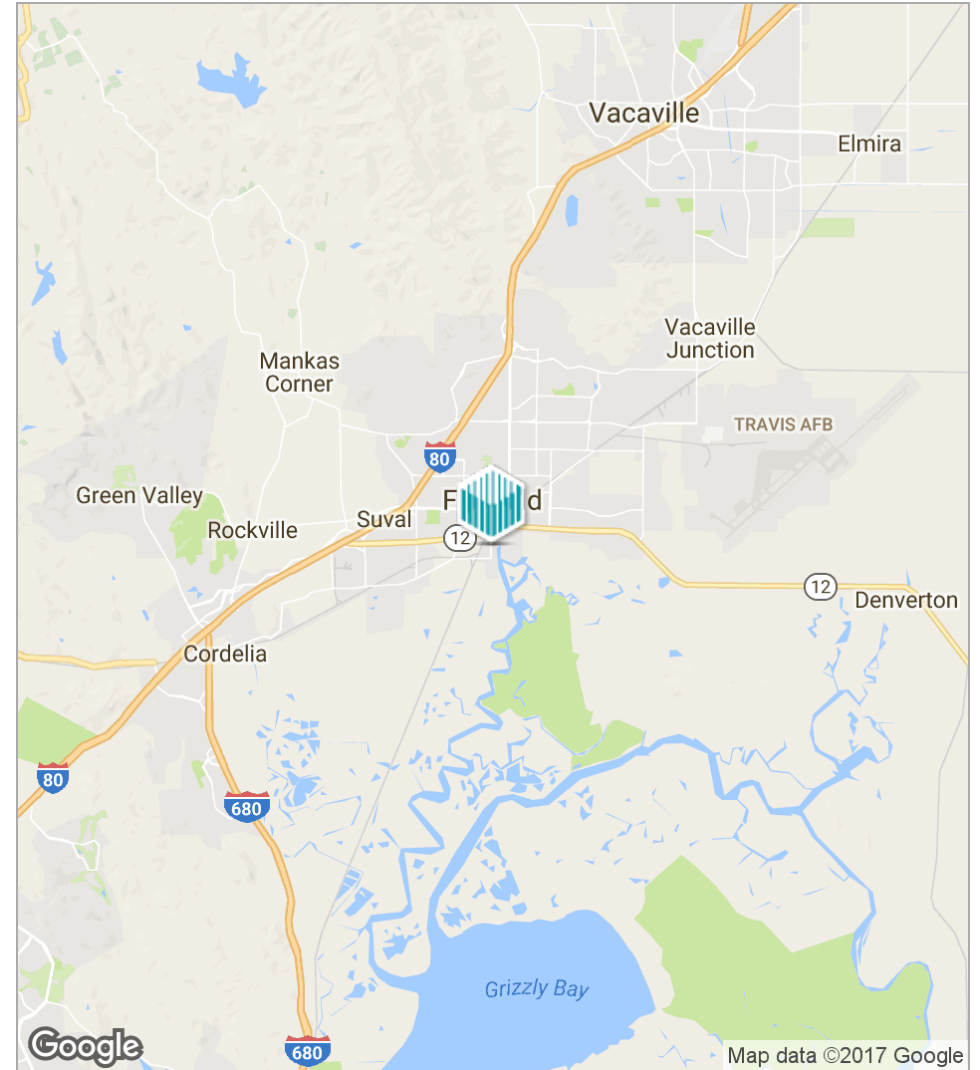
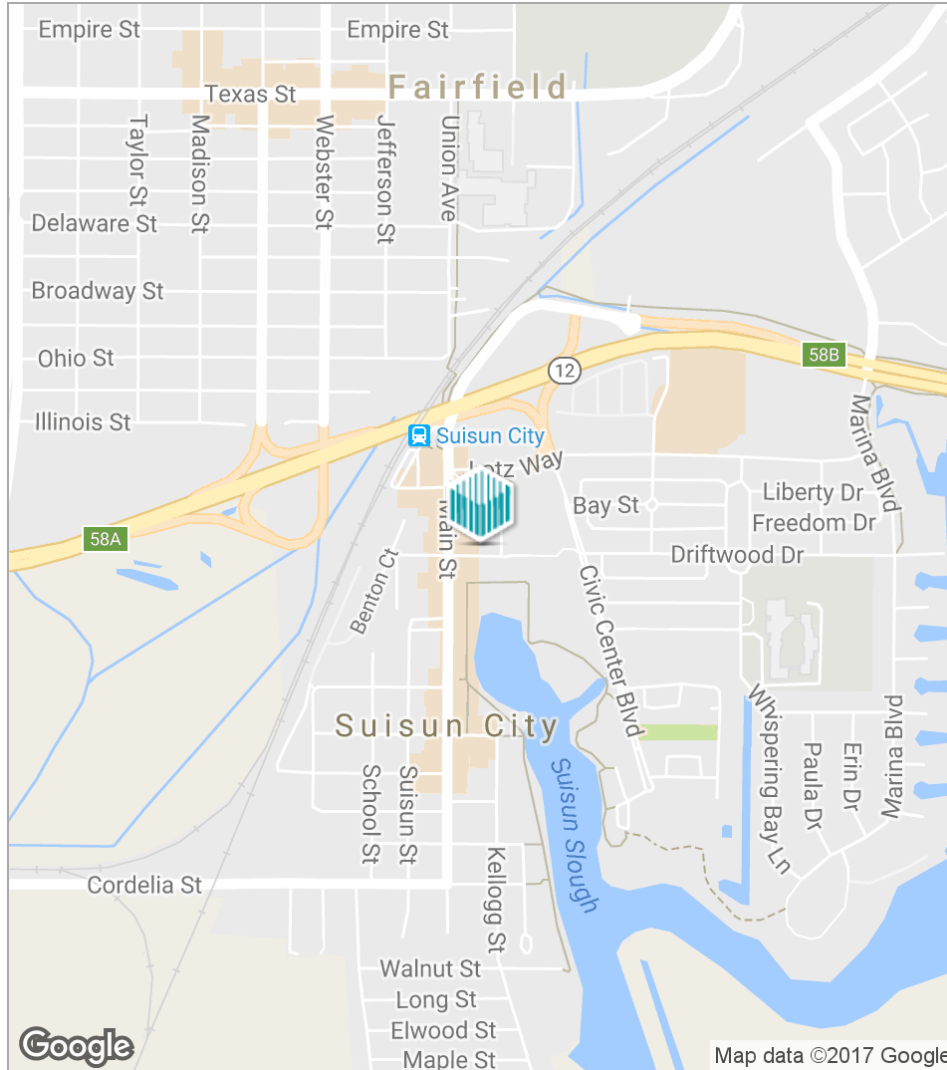
Class A Lobby



CHRIS ECONOMOU
Director of Acquisitions and Leasing
707.427.1212
ceconomou@wisemanco.com



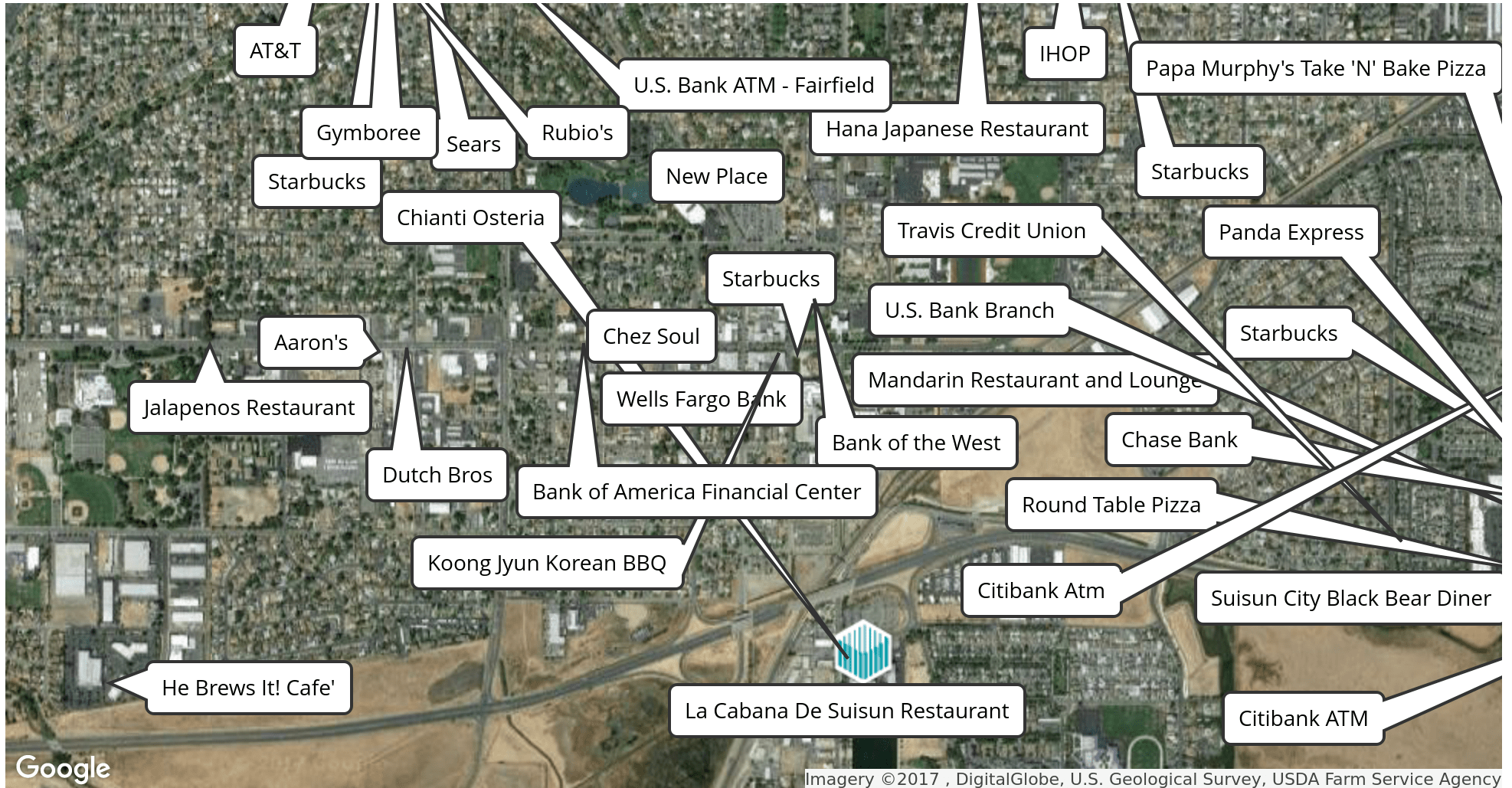
Location Maps



CHRIS ECONOMOU
Director of Acquisitions and Leasing
707.427.1212
ceconomou@wisemanco.com



Local Retail



CHRIS ECONOMOU
Director of Acquisitions and Leasing
707.427.1212
ceconomou@wisemanco.com

