

SUBLEASE OPPORTUNITY

700 Bishop Street, Suite 1010, Downtown Honolulu



OFFERING:

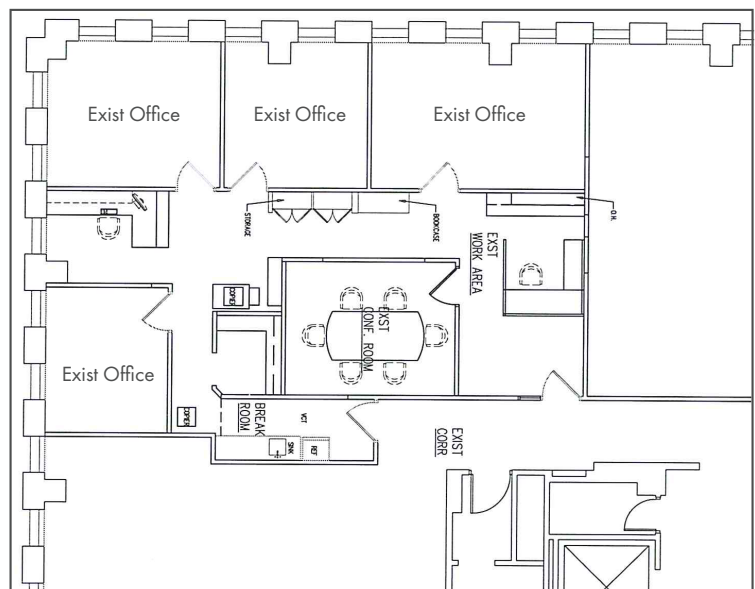
Discover this prime office sublease at 700 Bishop Street, Suite 1010, in the heart of downtown Honolulu. This fully furnished space is ready to move in and offers an affordable opportunity to work in one of the city's most desirable locations.

The suite includes three window offices with stunning harbor views, an impressive conference room with panoramic views, and an additional interior office for added flexibility. The reception area provides a professional first impression, and ample natural light fills the space, creating a comfortable and productive environment.

PROPERTY DETAILS

Size	1,698 rsf
Gross Rent	\$2.85/sf/mon (inclusive of opex)
Term	Through August 31, 2029

FLOOR PLAN



SUITE 1010 | CONFERENCE ROOM



SUITE 1010 | RECEPTION



BUILDING | LOBBY



BUILDING | FOOD COURT



KEY FEATURES:

- Prime Location with easy access to major highways, public transportation, and nearby amenities
- Fully Furnished and ready to move in
- Three Window Offices with Harbor Views
- Conference Room with Harbor Views
- One Interior Office for flexibility



SEAN TADAKI (PB) CCIM

Managing Partner • RB-21112
(808) 779-9699
stadaki@caahawaii.com



SEAN KETTLEY (S) CCIM

Vice President • RS-76223
(808) 497-1904
skettley@caahawaii.com

CAAHAWAII.COM • 225 QUEEN STREET, SUITE 200 • HONOLULU, HI 96813 • @WHEREHAWAIIWORKS

©2025 Commercial Asset Advisors. All information contained herein is obtained from sources deemed reliable. However, no representations or guarantees are made as to the accuracy thereof, and it is provided herein subject to errors, omissions, changes and withdrawals without notice. Offeror and/or his agent should confirm this information prior to making any offer. Buyer agrees that all negotiation shall be conducted through CAA only. No subagency is offered or intended.

