

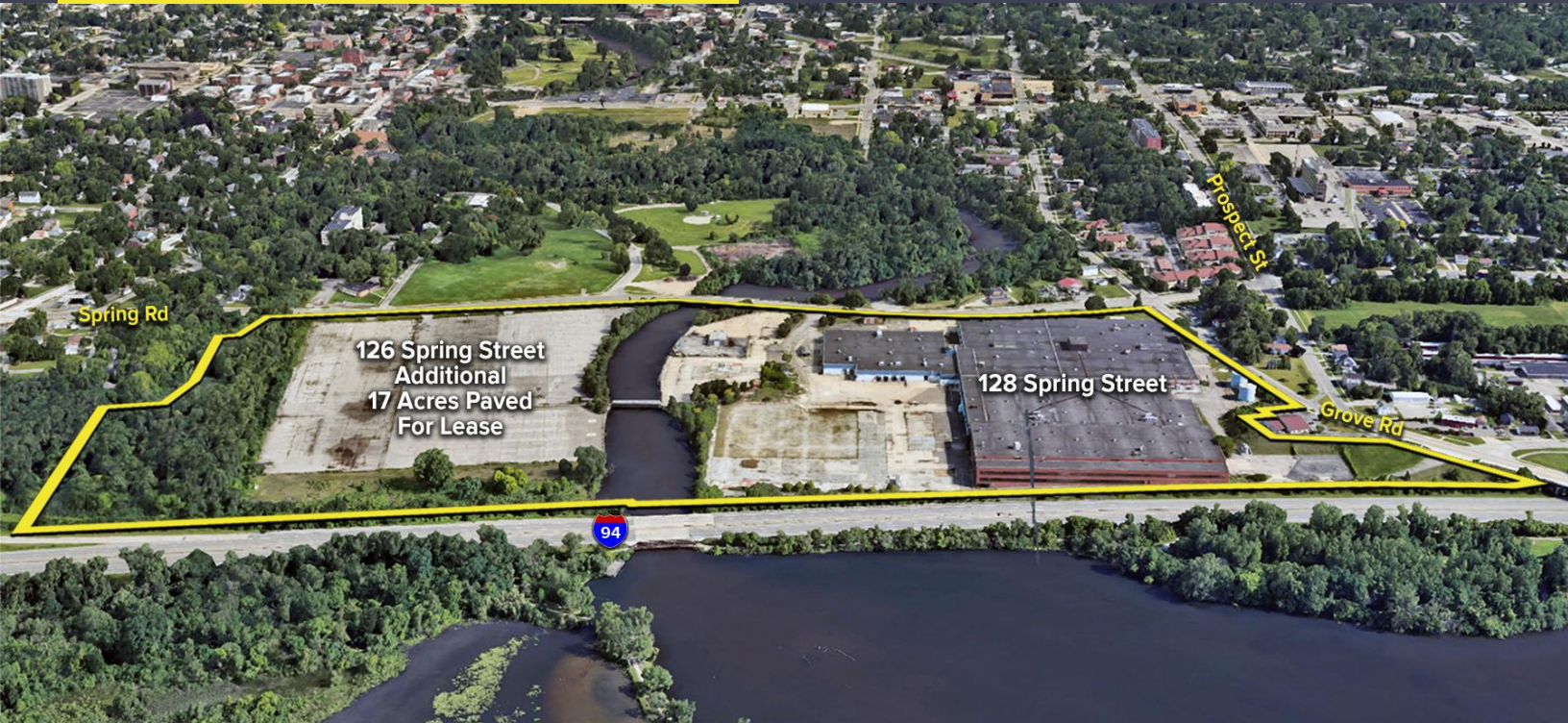
128 SPRING STREET
YPSILANTI, MICHIGAN

INDUSTRIAL FOR LEASE
78,000 - 715,000 Square Feet



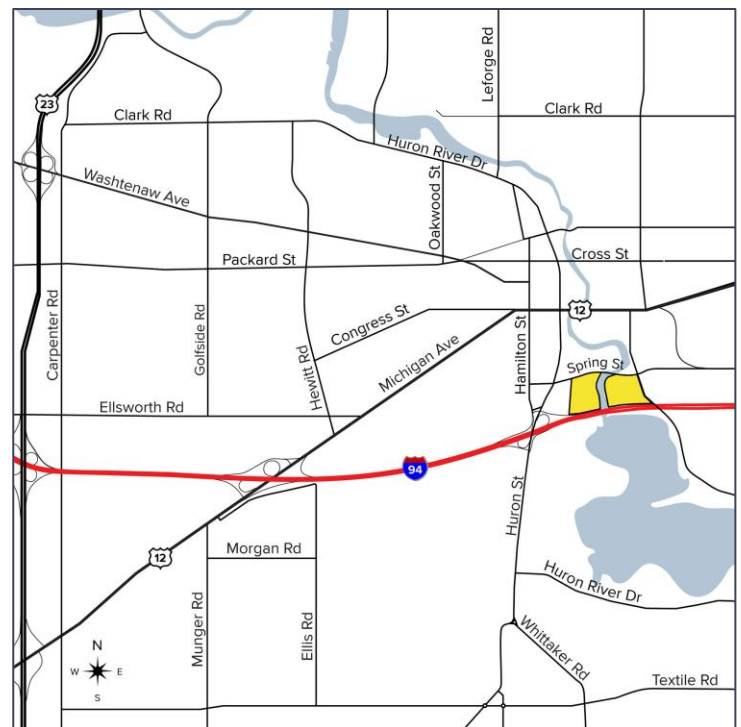
**SIGNATURE
ASSOCIATES**
KNOW SIGNATURE | KNOW RESULTS

PRIME MANUFACTURING LOCATION



PROPERTY FEATURES

- 78,000-715,000 square feet available
- 47,000 square feet of office
- 16' - 26' clear height
- (6) grade level doors, (12) truckwells
- 35.74 acres, additional 17 paved acres available
- Zoned M-2, Heavy Industrial
- 850+ parking spaces
- 14 megawatts power
- Located off I-94 at Huron Street with nearly 3,000 linear feet of frontage on the expressway
- Convenient access to area hotels and restaurants



For more information, please contact:

STEVE GORDON
(248) 948 0101
sgordon@signatureassociates.com

JAY CHAVEY
(248) 948 4196
jchavey@signatureassociates.com

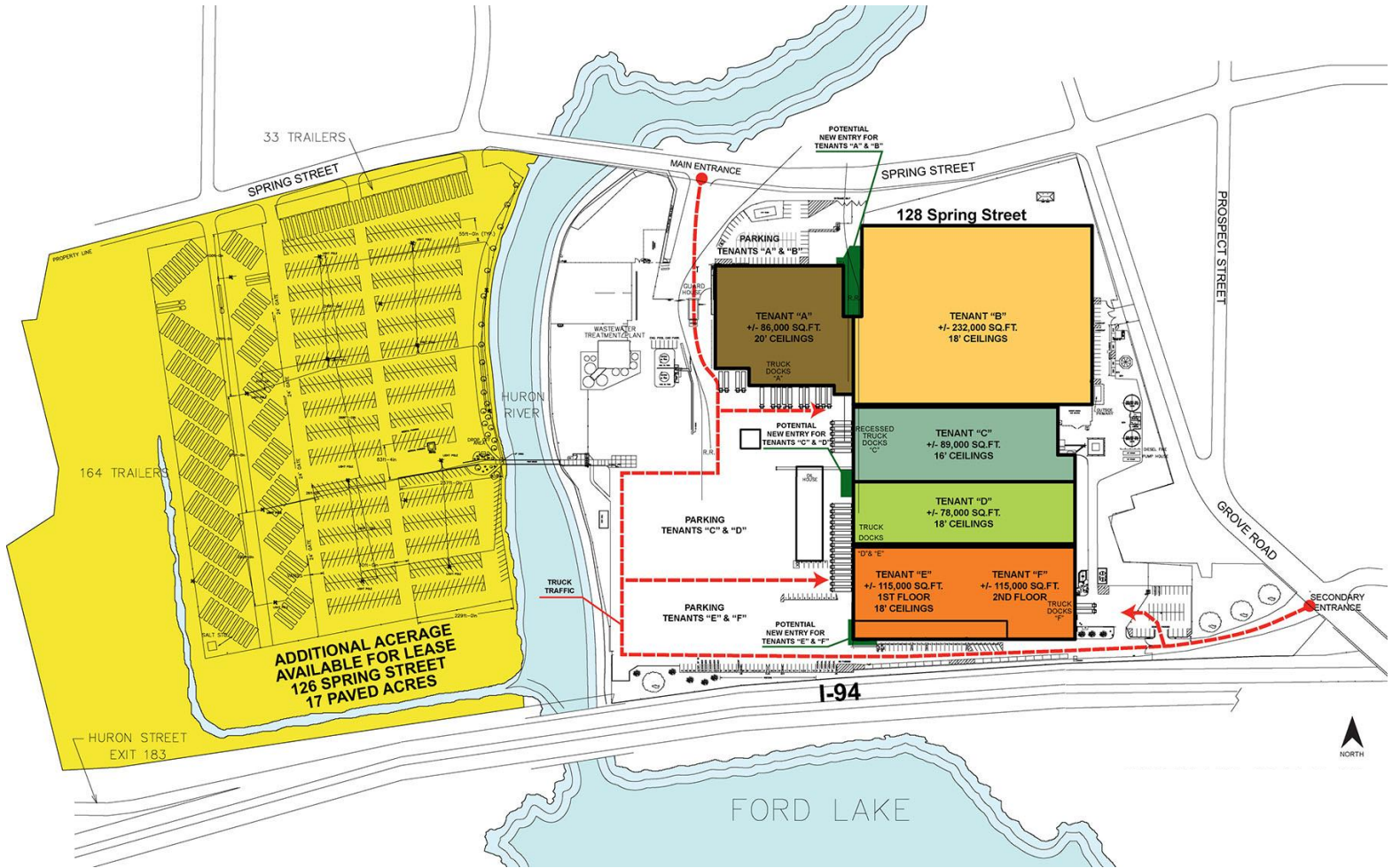
SIGNATURE ASSOCIATES
One Towne Square, Suite 1200
Southfield, MI 48076
www.signatureassociates.com

128 Spring Street - Ypsilanti, Michigan

Industrial For Lease

78,000-715,000
Square Feet
AVAILABLE

Site Plan



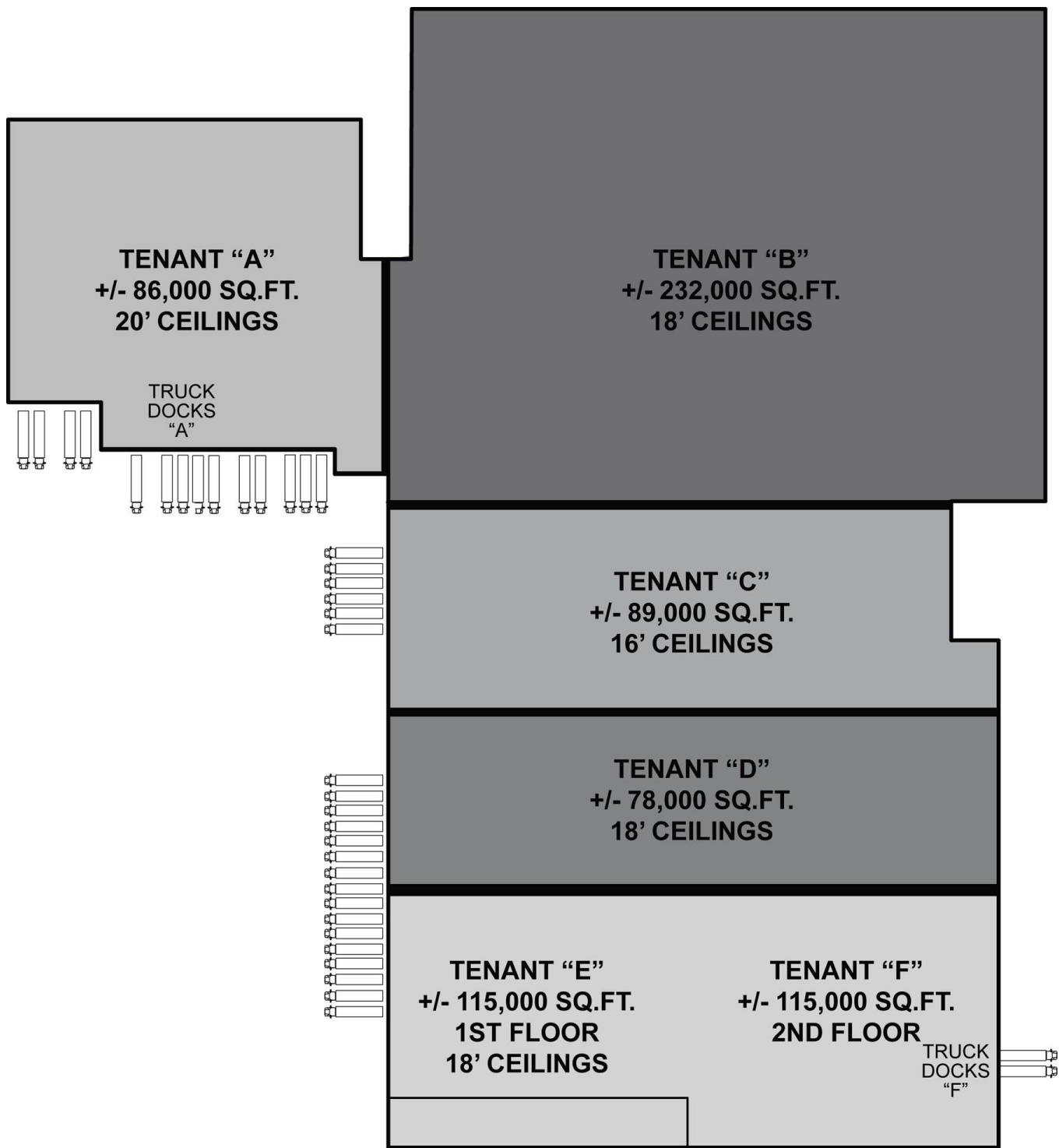
For more information, please contact:

STEVE GORDON
(248) 948 0101
sgordon@signatureassociates.com

JAY CHAVEY
(248) 948 4196
jchavey@signatureassociates.com

SIGNATURE ASSOCIATES
One Towne Square, Suite 1200
Southfield, MI 48076
www.signatureassociates.com

Floor Plan



For more information, please contact:

STEVE GORDON
(248) 948 0101
sgordon@signatureassociates.com

JAY CHAVEY
(248) 948 4196
jchavey@signatureassociates.com

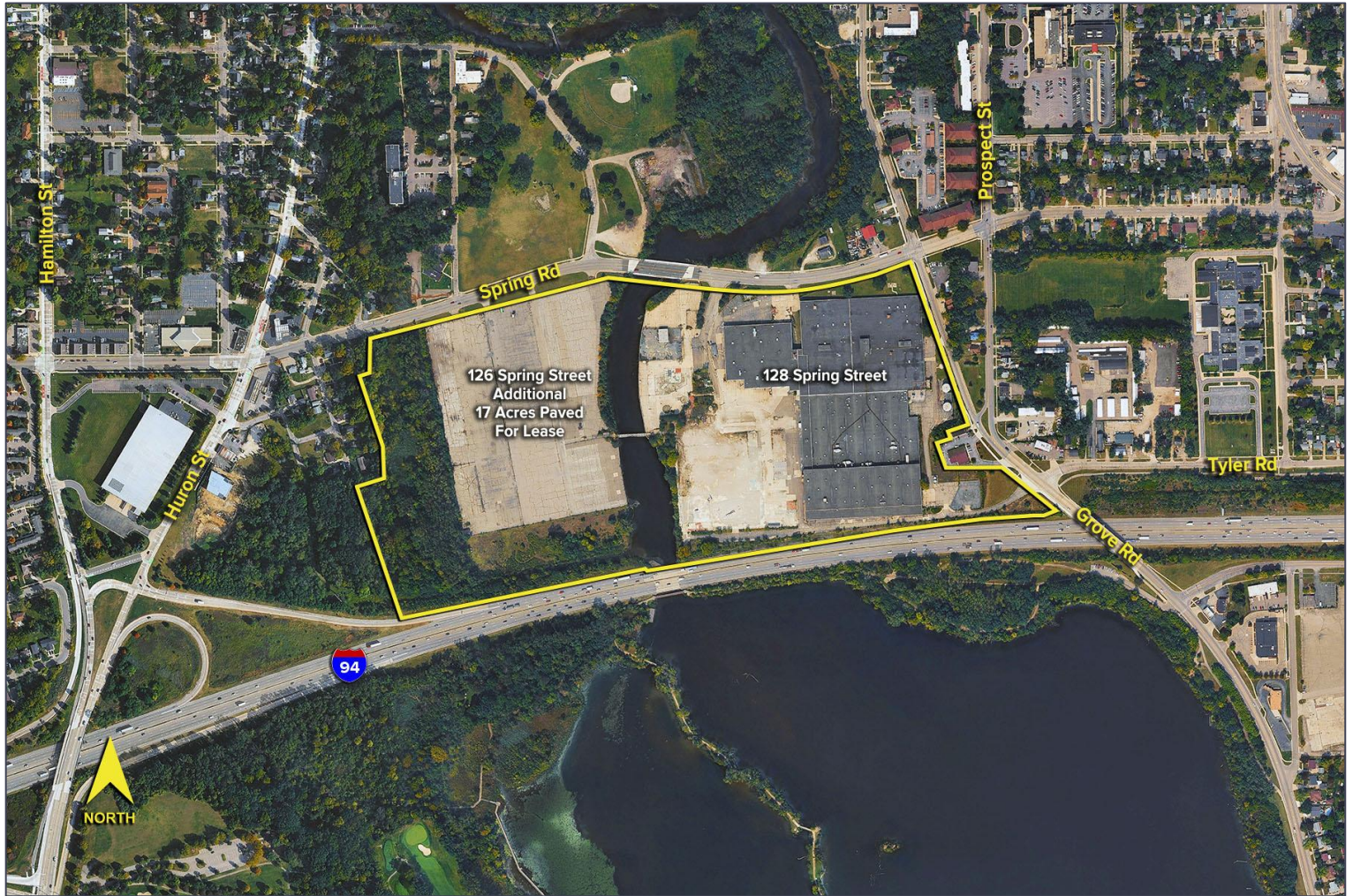
SIGNATURE ASSOCIATES
One Towne Square, Suite 1200
Southfield, MI 48076
www.signatureassociates.com

128 Spring Street - Ypsilanti, Michigan

Industrial For Lease

78,000-715,000
Square Feet
AVAILABLE

Aerial



For more information, please contact:

STEVE GORDON

(248) 948 0101

sgordon@signatureassociates.com

JAY CHAVEY

(248) 948 4196

jchavey@signatureassociates.com

SIGNATURE ASSOCIATES

One Towne Square, Suite 1200

Southfield, MI 48076

www.signatureassociates.com