

FOR LEASE

2015 S. Naper Blvd. Naperville, IL

8,500 SF | Former Chesterbrook Academy

Scott Elementary

Naperville Library

Naper Blvd

Exclusive Listing Agents:

Sean McCourt

Senior Vice President

+1 312 297 7688

sean.mccourt@cbre.com

Alex Corno

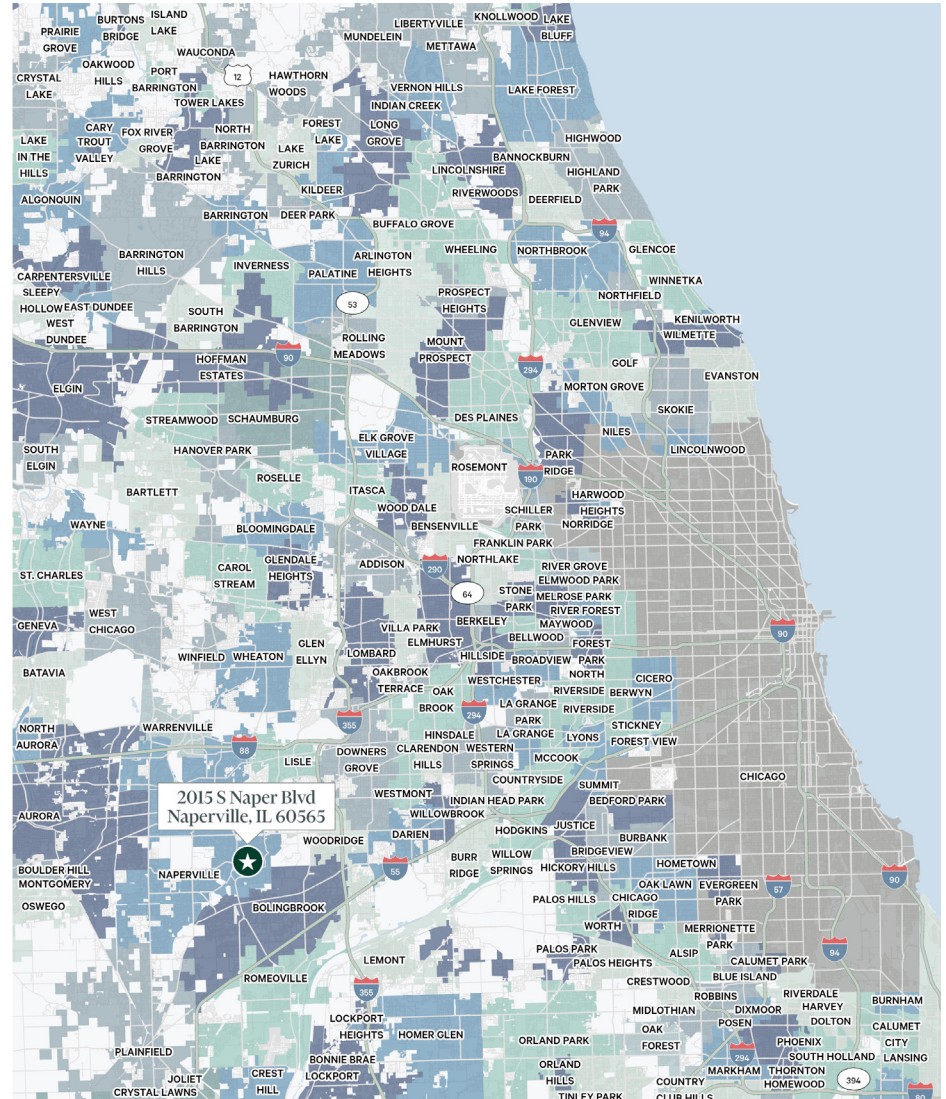
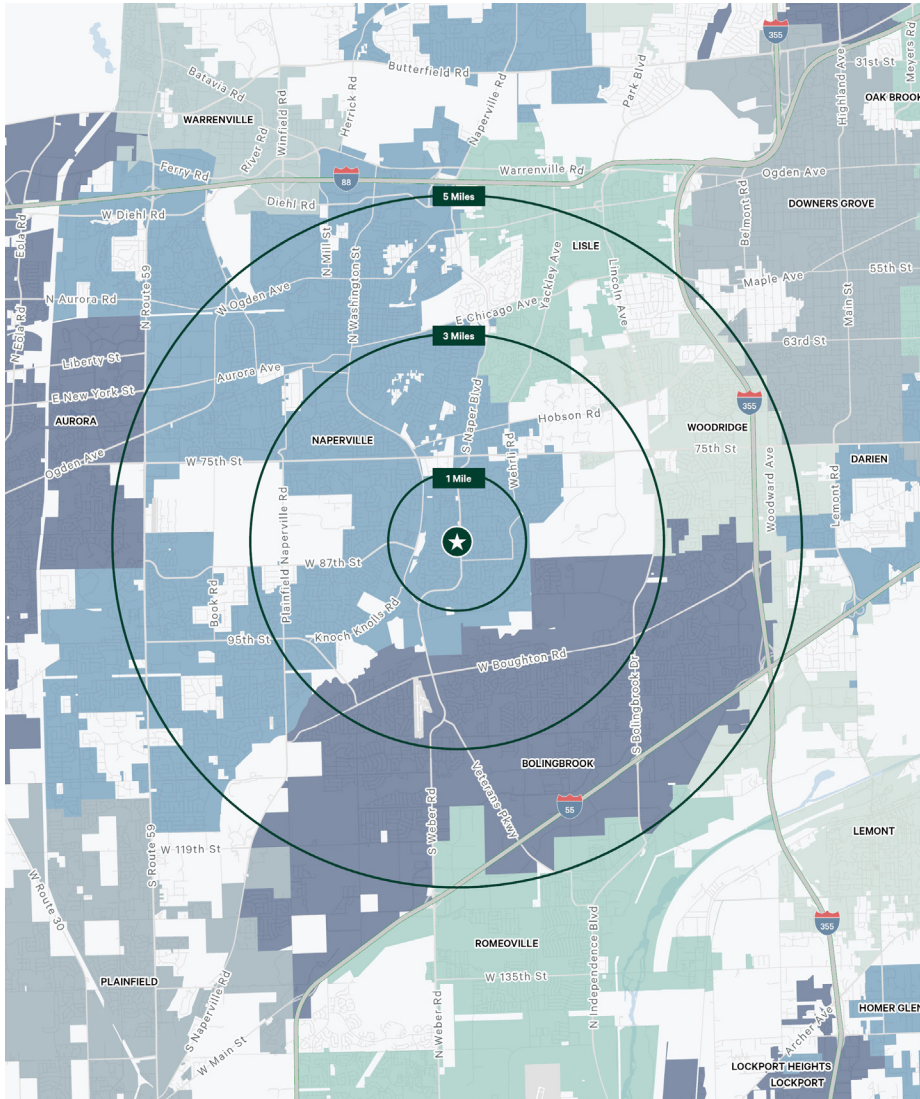
First Vice President

+1 312 935 1015

alex.corno@cbre.com

CBRE

Maps



WITHIN 5 MILES:



Population: 249,673



Households: 90,989



Average HHI: \$160,988

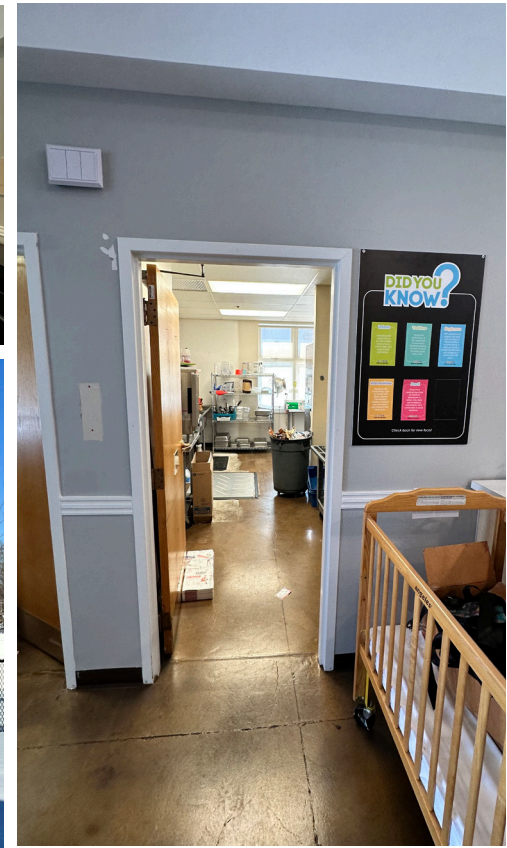
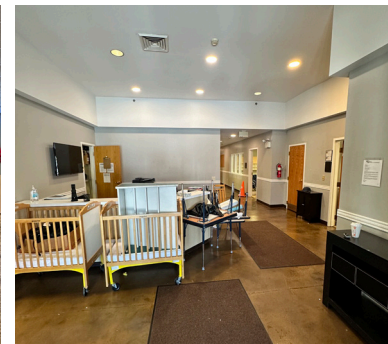
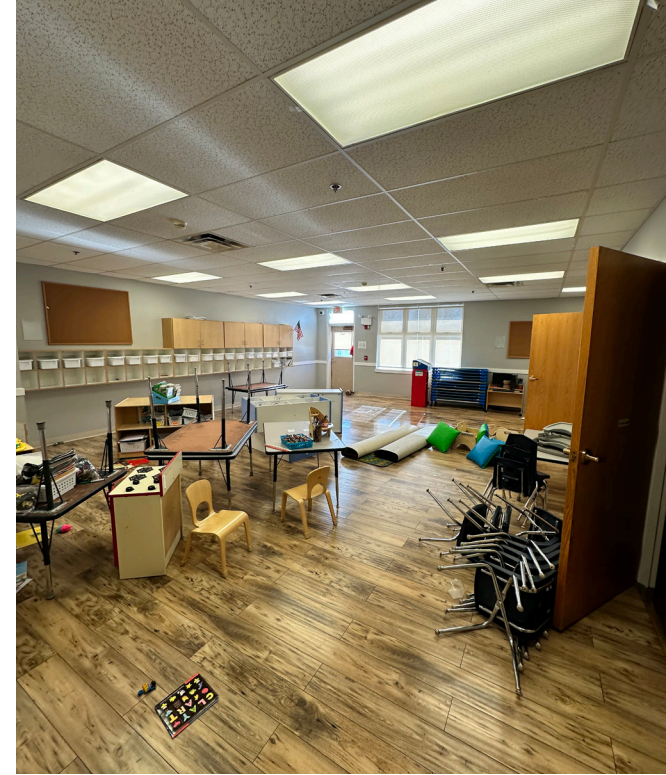


Daytime Population: 240,016

Site Details

- + 8,500 SF Freestanding Former Day Care Center
- + 2 Large Outdoor Play Areas
- + Heart of Naperville – One of the United States Highest Ranked Cities to Live
- + Convenient Location – Between Naperville Library and Scott Elementary School

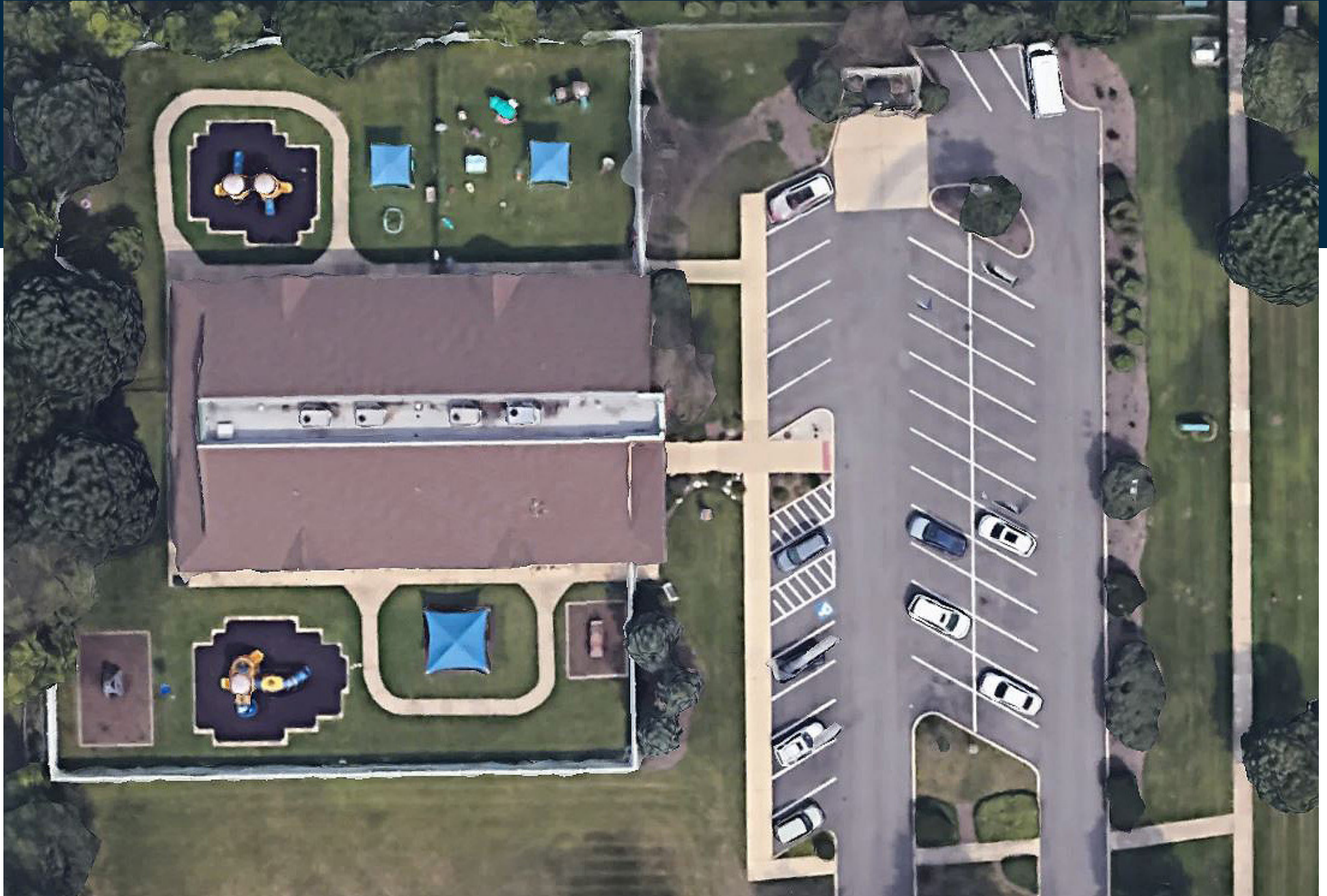
CBRE







Birdseye View



2015 S. Naper Blvd. Naperville, IL

Contact Us

Population	1 Mile		3 Miles		5 Miles		7 Miles	
2024 Population - Current Year Estimate	15,781		88,777		249,673		200,254	
2029 Population - Five Year Projection	15,248		85,938		242,851		195,205	
2020 Population - Census	16,189		90,492		253,620		202,386	
2010 Population - Census	16,103		90,690		250,626		200,430	
2020-2024 Annual Population Growth Rate	-0.60%		-0.45%		-0.37%		-0.25%	
2024-2029 Annual Population Growth Rate	-0.68%		-0.65%		-0.55%		-0.51%	
Households								
2024 Households - Current Year Estimate	5,746		30,475		90,989		73,627	
2029 Households - Five Year Projection	5,700		30,334		90,982		73,861	
2020 Households - Census	5,817		30,510		90,614		72,947	
2010 Households - Census	5,764		30,095		87,452		69,531	
2020-2024 Compound Annual Household Growth Rate	-0.29%		-0.03%		0.10%		0.22%	
2024-2029 Annual Household Growth Rate	-0.16%		-0.09%		0.00%		0.06%	
2024 Average Household Size	2.72		2.88		2.71		2.71	
Household Income								
2024 Average Household Income	\$194,781		\$188,506		\$160,988		\$137,456	
2029 Average Household Income	\$214,926		\$208,072		\$179,315		\$157,400	
2024 Median Household Income	\$146,185		\$141,324		\$116,789		\$105,235	
2029 Median Household Income	\$158,612		\$154,874		\$129,875		\$117,200	
2024 Per Capita Income	\$70,016		\$63,975		\$58,740		\$50,628	
2029 Per Capita Income	\$79,276		\$72,604		\$67,257		\$59,659	
Housing Units								
2024 Housing Units	5,961		31,648		95,102		78,096	
2024 Vacant Housing Units	215	3.6%	1,173	3.7%	4,113	4.3%	4,469	5.7%
2024 Occupied Housing Units	5,746	96.4%	30,475	96.3%	90,989	95.7%	73,627	94.3%
2024 Owner Occupied Housing Units	4,970	83.4%	26,664	84.3%	68,688	72.2%	59,040	75.6%
2024 Renter Occupied Housing Units	776	13.0%	3,811	12.0%	22,301	23.4%	14,587	18.7%
Education								
2024 Population 25 and Over	10,827		60,438		171,803		137,610	
HS and Associates Degrees	2,737	25.3%	19,219	31.8%	63,259	36.8%	68,005	49.4%
Bachelor's Degree or Higher	7,805	72.1%	38,651	64.0%	100,795	58.7%	59,585	43.3%
Places of Work								
2024 Businesses	260		1,893		8,384		5,727	
2024 Employees	1,613		25,078		121,863		73,974	



Sean McCourt
Senior Vice President
+1 312 297 7688
sean.mccourt@cbre.com



Alex Corno
First Vice President
+1 312 935 1015
alex.corno@cbre.com



321 N Clark St, Suite 3400 | Chicago, IL 60654

© 2025 CBRE, Inc. All rights reserved. This information has been obtained from sources believed reliable, but has not been verified for accuracy or completeness. You should conduct a careful, independent investigation of the property and verify all information. Any reliance on this information is solely at your own risk. CBRE and the CBRE logo are service marks of CBRE, Inc. All other marks displayed on this document are the property of their respective owners, and the use of such logos does not imply any affiliation with or endorsement of CBRE. Photos herein are the property of their respective owners. Use of these images without the express written consent of the owner is prohibited.