



FOR LEASE

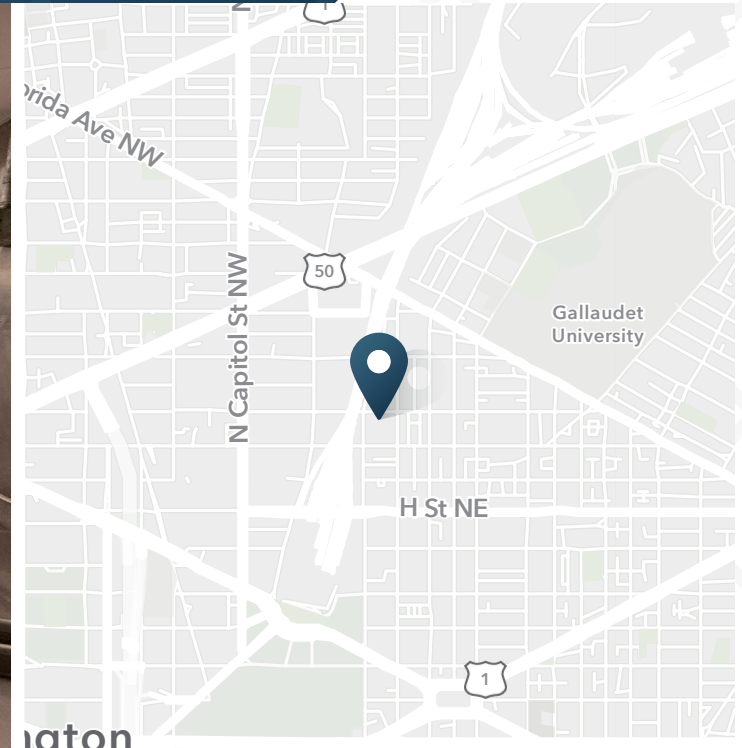
1110 Congress Street NE

1110 Congress Street | Washington DC



1110 Congress Street NE

1110 Congress Street | Washington DC



ABOUT THE PROPERTY

- Second-generation commissary kitchen with all existing kitchen infrastructure in place
- 7,218 SF across two levels — 4,463 SF on the ground floor and 2,755 SF on the second floor
- Located in the heart of the Noma district with direct access to New York Avenue connecting into Maryland and Virginia

7,218 SF
Available

Contact
Broker
Rate

NEARBY RETAILERS



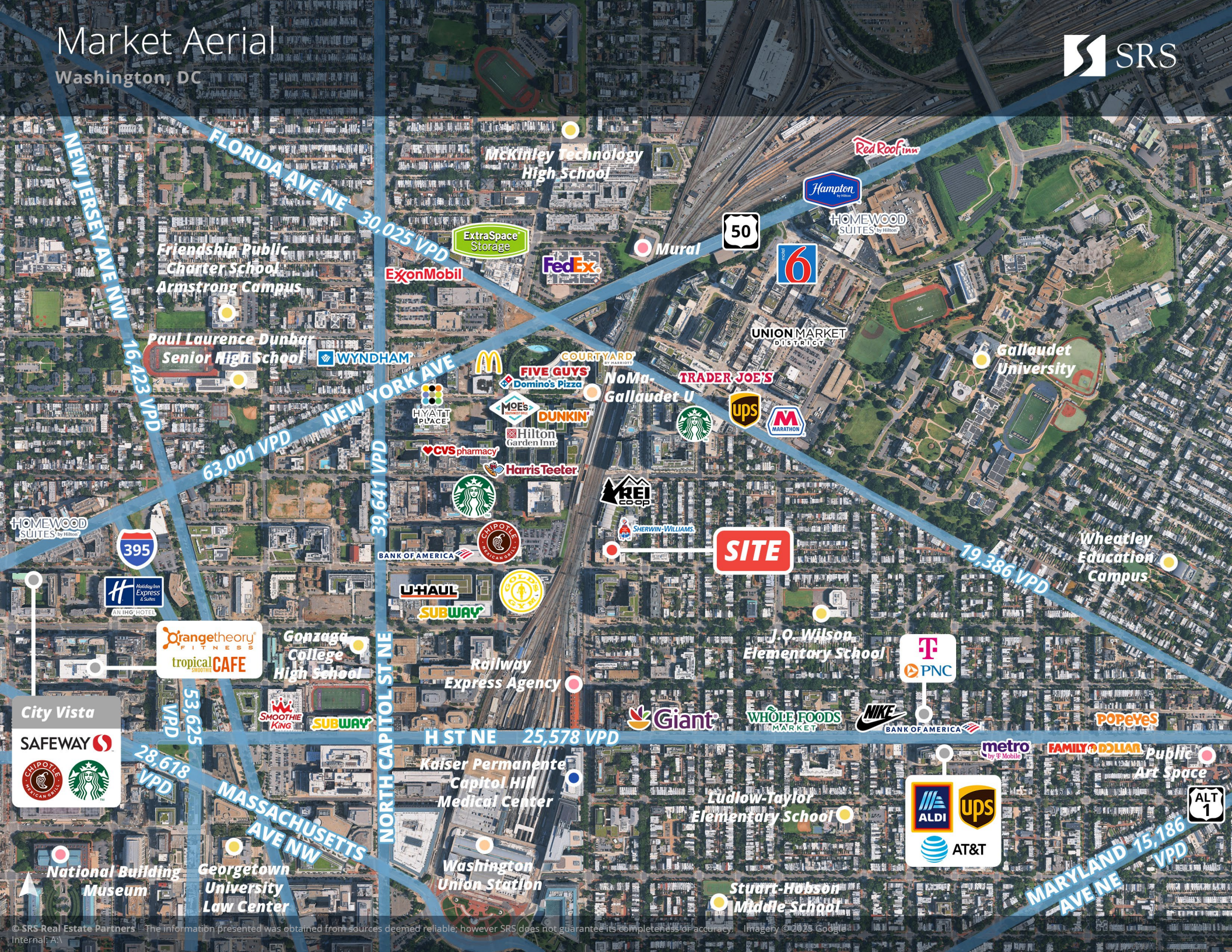
SHERWIN
WILLIAMS



TRADER JOE'S

Market Aerial

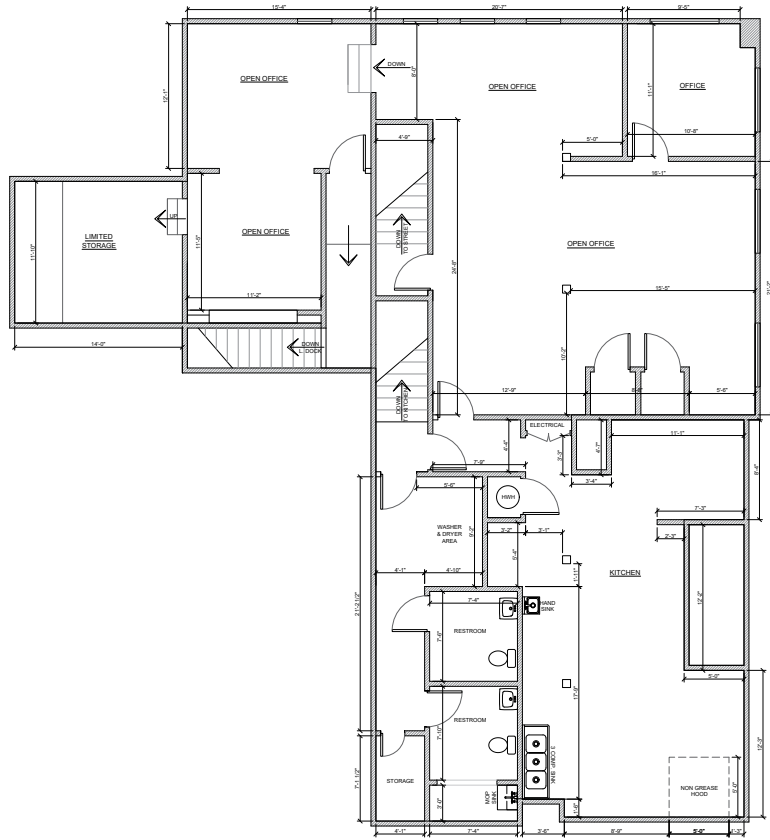
Washington, DC



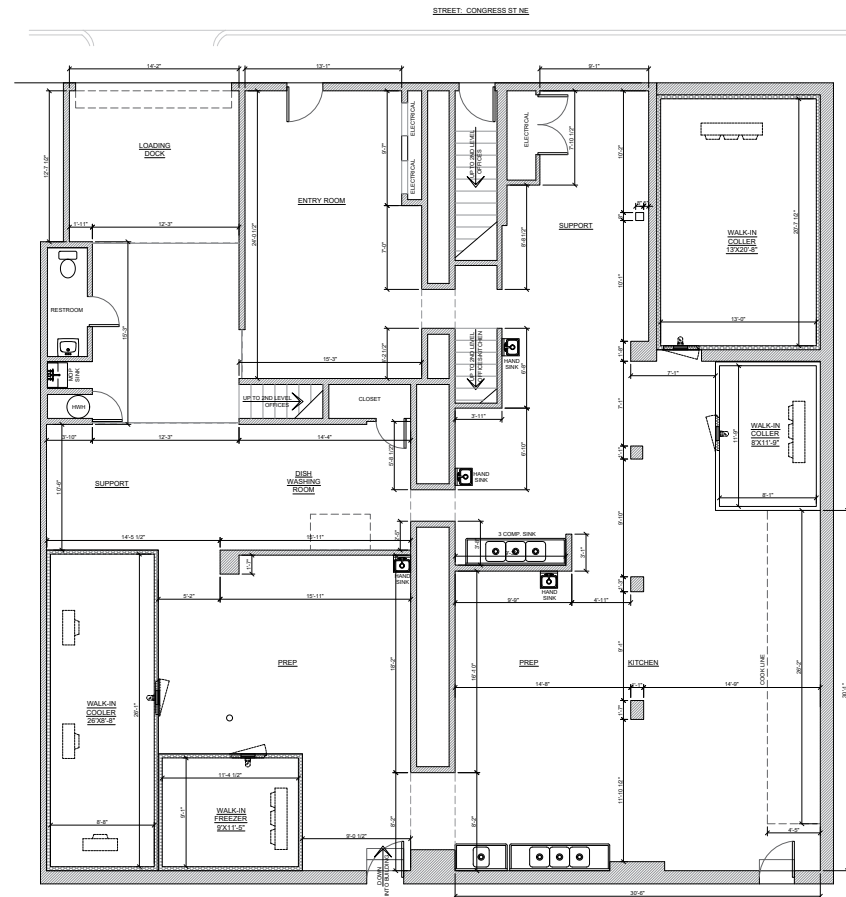
SITE

Site Plan

1110 Congress Street | Washington DC



2 SECOND FLOOR BUILDING LAYOUT SCALE: 1/4" = 1'-0"

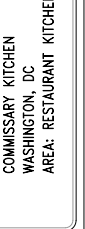


1 FIRST FLOOR BUILDING LAYOUT SCALE: 1/4" = 1'-0"

JOHNSON-LANCASTER AND ASSOCIATES, INC.
 FOOD SERVICE EQUIPMENT SPECIALIST
14001 1st Highway in S. Columbia, SC 29914 (877) 764-8662

REVISION	DATE	DESCRIPTION

PROJECT FILE NO.
 COMMISSARY KITCHEN
 WASHINGTON, DC
 AREA: RESTAURANT KITCHEN



DATE: 7/9/2014
 SCALE: 1/4" = 1'-0"
 DRAWN BY: JLF
 CHECKED BY: JLF
 PAPER SIZE: 30x42
 SHEET: LAYOUT

1110 Congress Street NE

1110 Congress Street | Washington DC



DEMOGRAPHIC HIGHLIGHTS

1 MILE

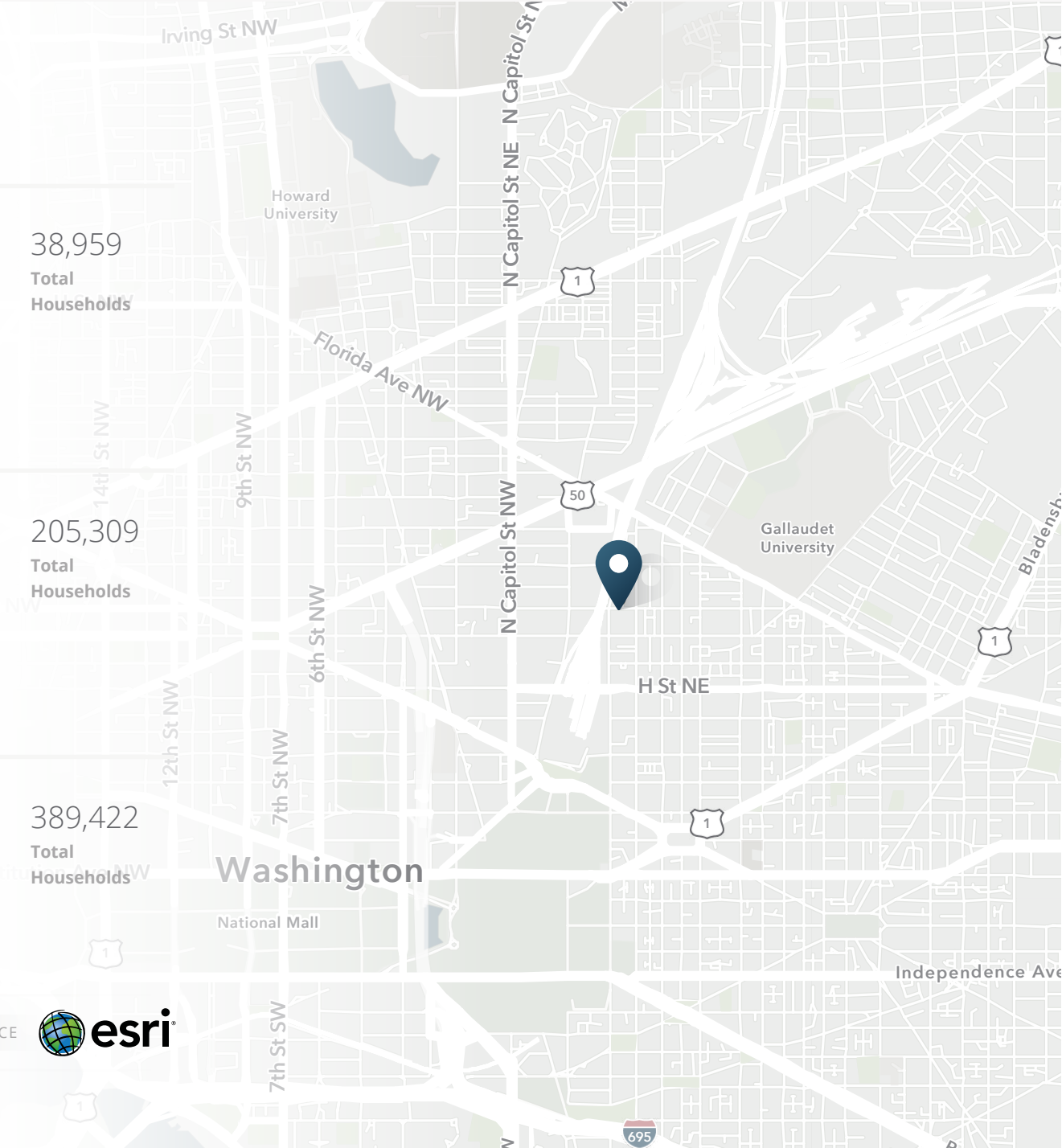
72,957 Population	119,622 Total Daytime Population	\$177,256 Average Household Income	38,959 Total Households
----------------------	--	--	-------------------------------

3 MILES

401,912 Population	802,516 Total Daytime Population	\$172,292 Average Household Income	205,309 Total Households
-----------------------	--	--	--------------------------------

5 MILES

821,573 Population	1,238,302 Total Daytime Population	\$161,800 Average Household Income	389,422 Total Households
-----------------------	--	--	--------------------------------



> **Want more?** Contact us for a complete demographic, foot-traffic, and mobile data insights report.

SOURCE





SRS Real Estate Partners

1250 Connecticut Avenue NW, Suite 700
Washington, D.C. 20036
202.925.4205

Arris Noble

202.503.2195
arris.noble@srsre.com

Rachel Callender

202.503.3540
rachel.callender@srsre.com

SRSRE.COM

©2025 SRS Real Estate Partners LLC. All Rights Reserved.

The information presented was obtained from sources deemed reliable;
however SRS Real Estate Partners does not guarantee its completeness or accuracy.