



David Chapin Commercial

*For Sublease*

4,943 RSF Ground Floor Medical Office  
Retail Space located in SODO Mixed Use Complex  
45 West Crystal Lake Street, Suite 14  
Orlando 32806



Massage Envy

Orlando Orthopaedic Center  
WALK-IN CLINIC

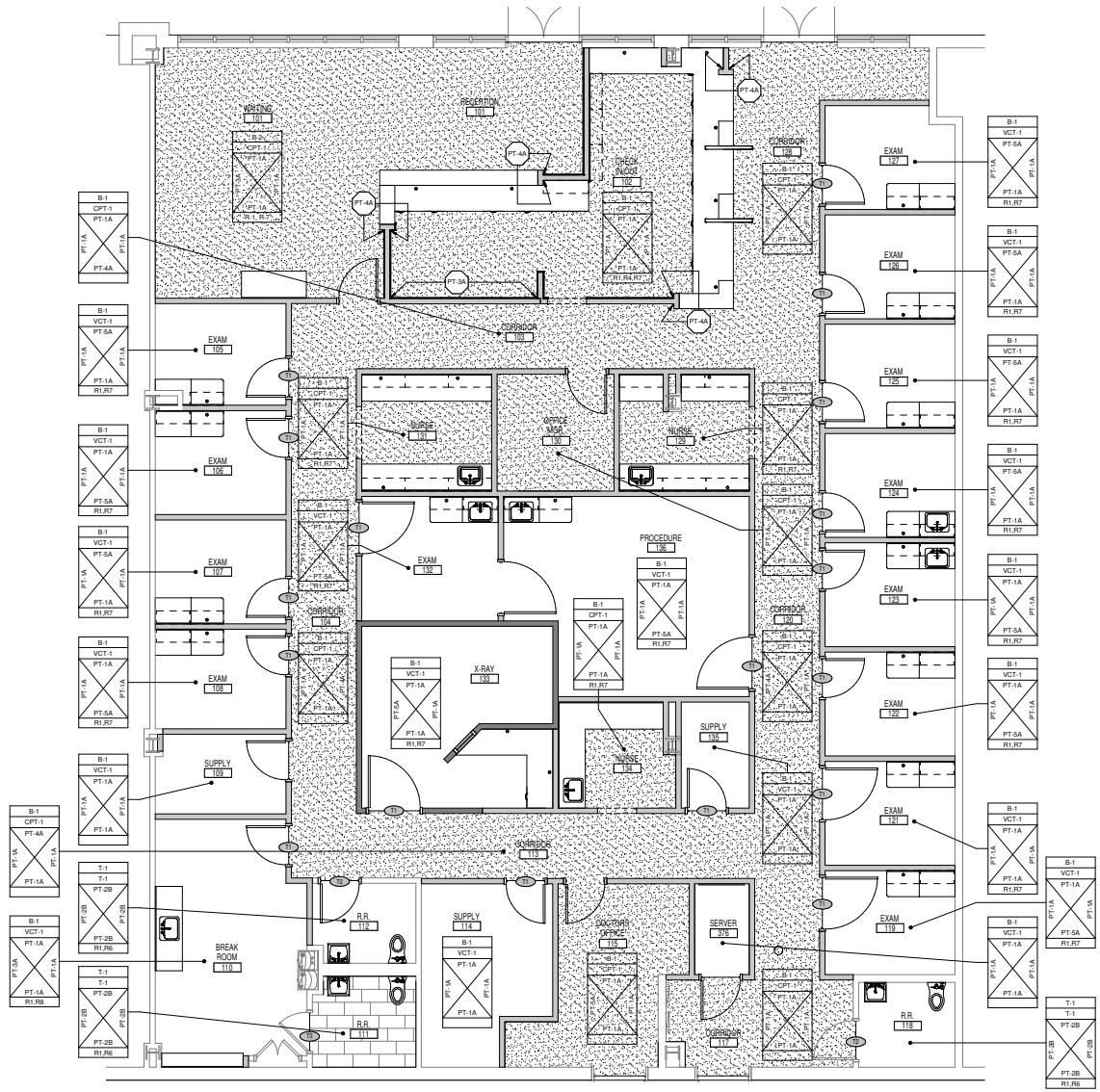




## *At a Glance*

- Prime medical office space located in the SODO district
- Convenient surface and garage parking





# Floor Plan

- Medical floor plan with reception and exam rooms





*Site Plan*





# Contact

David Chapin

450 South Orange Avenue, Suite 300

Orlando, FL 32801

☎ 407.616.3195

✉ [DavidChapin@DavidChapinCommerical.com](mailto:DavidChapin@DavidChapinCommerical.com)

🌐 [DavidChapinCommerical.com](http://DavidChapinCommerical.com)



David Chapin  
Commercial