

704 WOODWARD AVENUE
ROCHESTER, MICHIGAN

INDUSTRIAL FOR SALE
49,804 Square Feet Available



**SIGNATURE
ASSOCIATES**
KNOW SIGNATURE | KNOW RESULTS

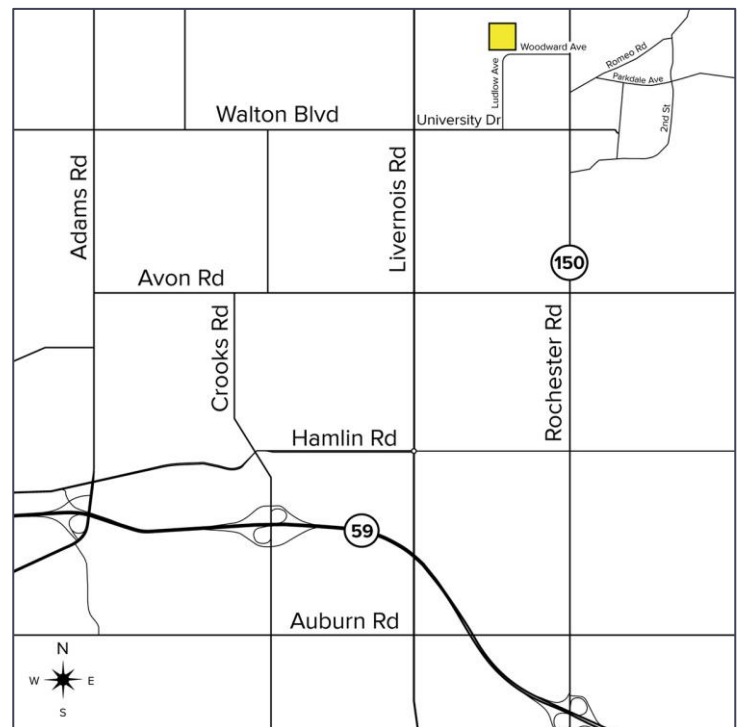
SOLARONICS, INC.



PRICE REDUCED

PROPERTY FEATURES

- 49,804 square feet available
- 6,100 square feet of office
- 8'-14' clear height
- (2) grade level doors, (3) truckwells
- (1) 5-Ton crane
- Zoned II
- Prime property ready for redevelopment or tenant that can use existing structure
- Located directly on the Paint Creek Trail
- Many possible options
- Sale Price: \$2,600,000 (\$52.20/sq.ft.)



For more information, please contact:

PETER VANDERKAAY
(248) 359 3837
pvanderkaay@signatureassociates.com

PAUL SAAD
(248) 359 0652
psaad@signatureassociates.com

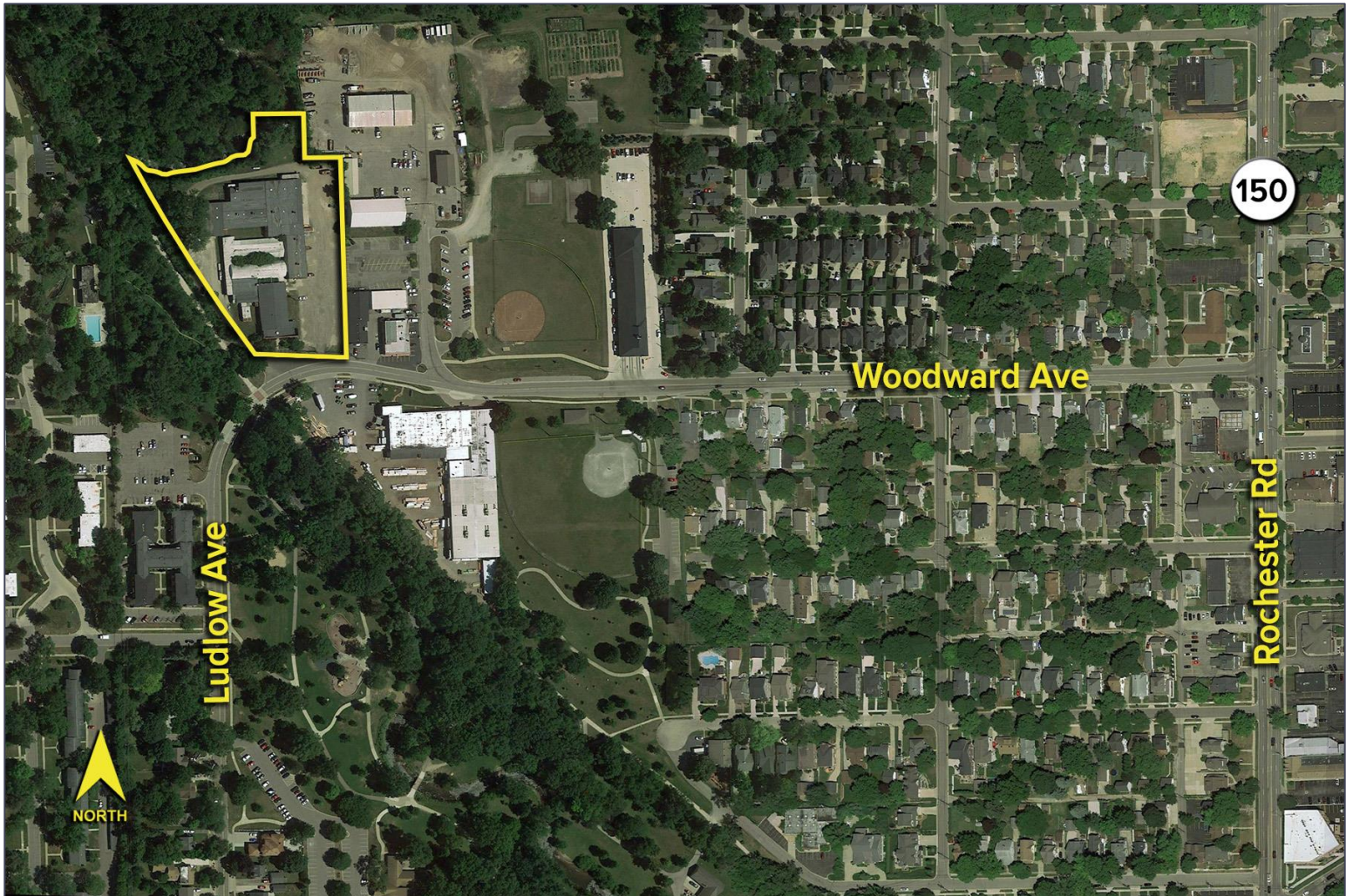
SIGNATURE ASSOCIATES
One Towne Square, Suite 1200
Southfield, MI 48076
www.signatureassociates.com

704 Woodward Avenue – Rochester, Michigan

Industrial For Sale

49,804
Square Feet
AVAILABLE

Aerial



For more information, please contact:

PETER VANDERKAAY

(248) 359 3837

pvanderkaay@signatureassociates.com

PAUL SAAD

(248) 359 0652

psaad@signatureassociates.com

SIGNATURE ASSOCIATES

One Towne Square, Suite 1200

Southfield, MI 48076

www.signatureassociates.com