



Keegan & Coppin
COMPANY, INC.

FOR LEASE

5355 SKYLANE BLVD.
SANTA ROSA, CA

10,000 SQ. FT. DISTRIBUTION
SPACE WITH OUTDOOR
STORAGE

Go beyond broker.

PRESENTED BY:

ANNETTE COOPER
SENIOR REAL ESTATE ADVISOR
LIC # 00826250 (707) 528-1400, EXT. 257
ACOOOPER@KEEGANCOPPIN.COM



5355 SKYLANE BLVD.
SANTA ROSA, CA

**DISTRIBUTION
SPACE FOR
LEASE**

PROPERTY SUMMARY

PROPERTY HIGHLIGHTS

- 9,979+/- SF; 1.73 Acres
- MP 1 Zoning
- Outdoor storage area in the Business Park
- Former cannabis distribution use
- Available 9/23/24
- Conveniently located near Highway 101 and the Sonoma County Airport

Potential opportunity to purchase the entire building. Call Listing Agent!

PROPERTY INFORMATION

Lease Rate

\$1.35 per sq ft Industrial Gross

Lease Term

Negotiable

Parking

39 On-Site Parking Spaces

Zoning

BP - Business Park



PRESENTED BY:

ANNETTE COOPER, SREA
KEEGAN & COPPIN CO., INC.
LIC # 00826250 (707) 528-1400, EXT. 257
ACOOOPER@KEEGANCOPPIN.COM

The above information, while not guaranteed, has been secured from sources we believe to be reliable. Submitted subject to error, change or withdrawal. An interested party should verify the status of the property and the information herein.



AREA DESCRIPTION

DESCRIPTION OF AREA

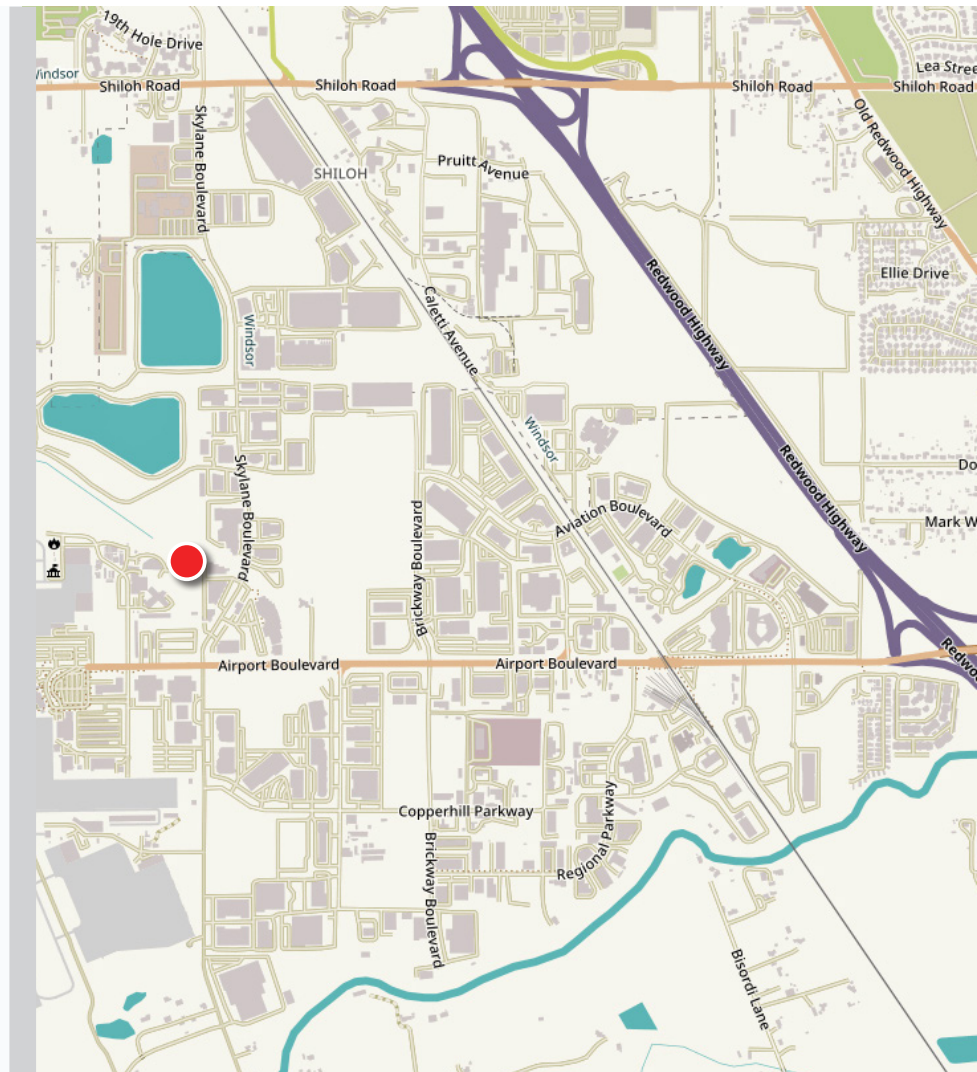
Premiere business park in Airport District of Santa Rosa.

NEARBY AMENITIES

- Restaurants
- Golf
- Health Club
- Cinema

TRANSPORTATION ACCESS

- Sonoma County Airport
- Easy access to Highway 101



PRESENTED BY:

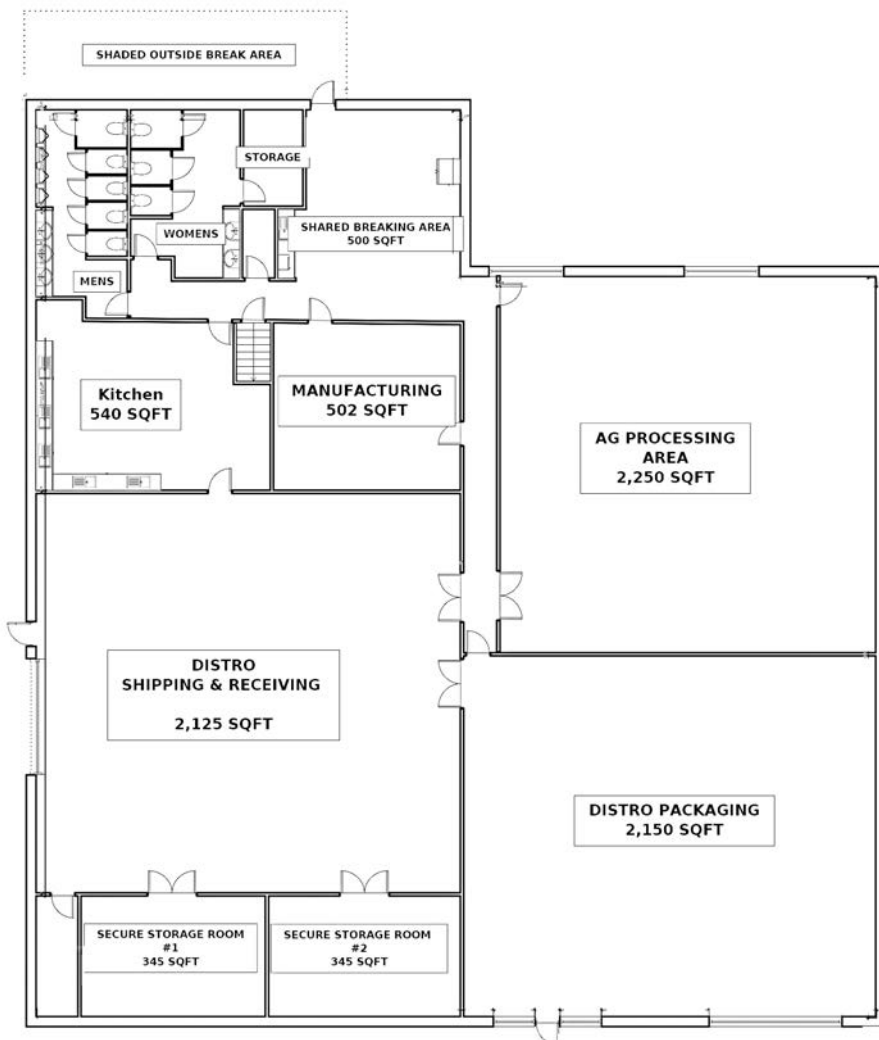
ANNETTE COOPER, SREA
KEEGAN & COPPIN CO., INC.
LIC # 00826250 (707) 528-1400, EXT. 257
ACOPER@KEEGANCOPPIN.COM

The above information, while not guaranteed, has been secured from sources we believe to be reliable. Submitted subject to error, change or withdrawal. An interested party should verify the status of the property and the information herein.

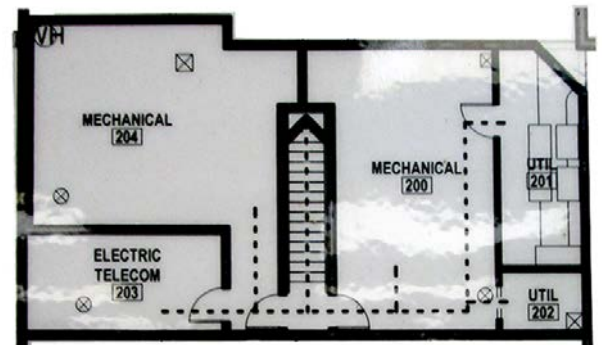


FLOOR PLAN

FIRST FLOOR



SECOND FLOOR



PRESENTED BY: ANNETTE COOPER, SREA
KEEGAN & COPPIN CO., INC.
LIC # 00826250 (707) 528-1400, EXT. 257
ACOOPER@KEEGANCOPPIN.COM

The above information, while not guaranteed, has been secured from sources we believe to be reliable. Submitted subject to error, change or withdrawal. An interested party should verify the status of the property and the information herein.



5355 SKYLANE BLVD.
SANTA ROSA, CA

**DISTRIBUTION
SPACE FOR
LEASE**

PROPERTY PHOTOS



PRESENTED BY:

ANNETTE COOPER, SREA
KEEGAN & COPPIN CO., INC.
LIC # 00826250 (707) 528-1400, EXT. 257
ACOOPER@KEEGANCOPPIN.COM

The above information, while not guaranteed, has been secured from sources we believe to be reliable. Submitted subject to error, change or withdrawal. An interested party should verify the status of the property and the information herein.



5355 SKYLANE BLVD.
SANTA ROSA, CA

**DISTRIBUTION
SPACE FOR
LEASE**

PROPERTY PHOTOS



PRESENTED BY: **ANNETTE COOPER, SREA**
KEEGAN & COPPIN CO., INC.
LIC # 00826250 (707) 528-1400, EXT. 257
ACOOOPER@KEEGANCOPPIN.COM

The above information, while not guaranteed, has been secured from sources we believe to be reliable. Submitted subject to error, change or withdrawal. An interested party should verify the status of the property and the information herein.



5355 SKYLANE BLVD.
SANTA ROSA, CA

**DISTRIBUTION
SPACE FOR
LEASE**

VICINITY MAP



Keegan & Coppin Co., Inc.
1355 N Dutton Ave.
Santa Rosa, CA 95401
www.keegancoppin.com
(707) 528-1400

The above information, while not guaranteed, has been secured from sources we believe to be reliable. Submitted subject to error, change or withdrawal. An interested party should verify the status of the property and the information herein.

PRESENTED BY:

ANNETTE COOPER, SREA
LIC # 00826250 (707) 528-1400, EXT. 257
ACOOPER@KEEGANCOPPIN.COM