

Century Park Plaza

1801 Century Park East, 8th Floor
Los Angeles, CA 90067

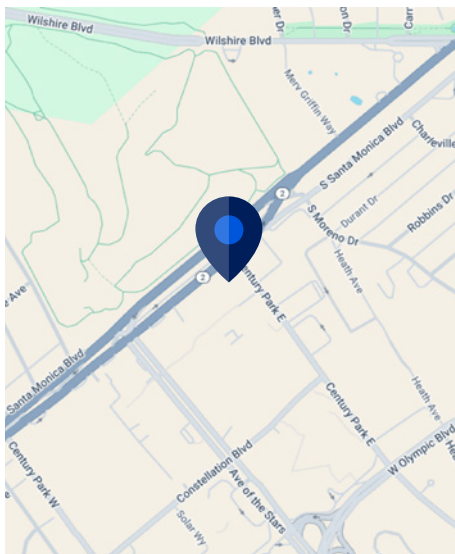
Space Profile:

Premises	8th Floor
Size/RSF	2,660 RSF
Rental Rate	Negotiable
Availability	Immediate
Term	Thru December 31, 2030
Building Class	Class A Office
Built	1972, renovated 2020
Parking	2.8/1,000



Features:

- Single offices available as highlighted on the floor plan
- Convenient access to the Westfield Shopping center
- Full valet parking services available
- 24-hour on-site security personnel



Contact:

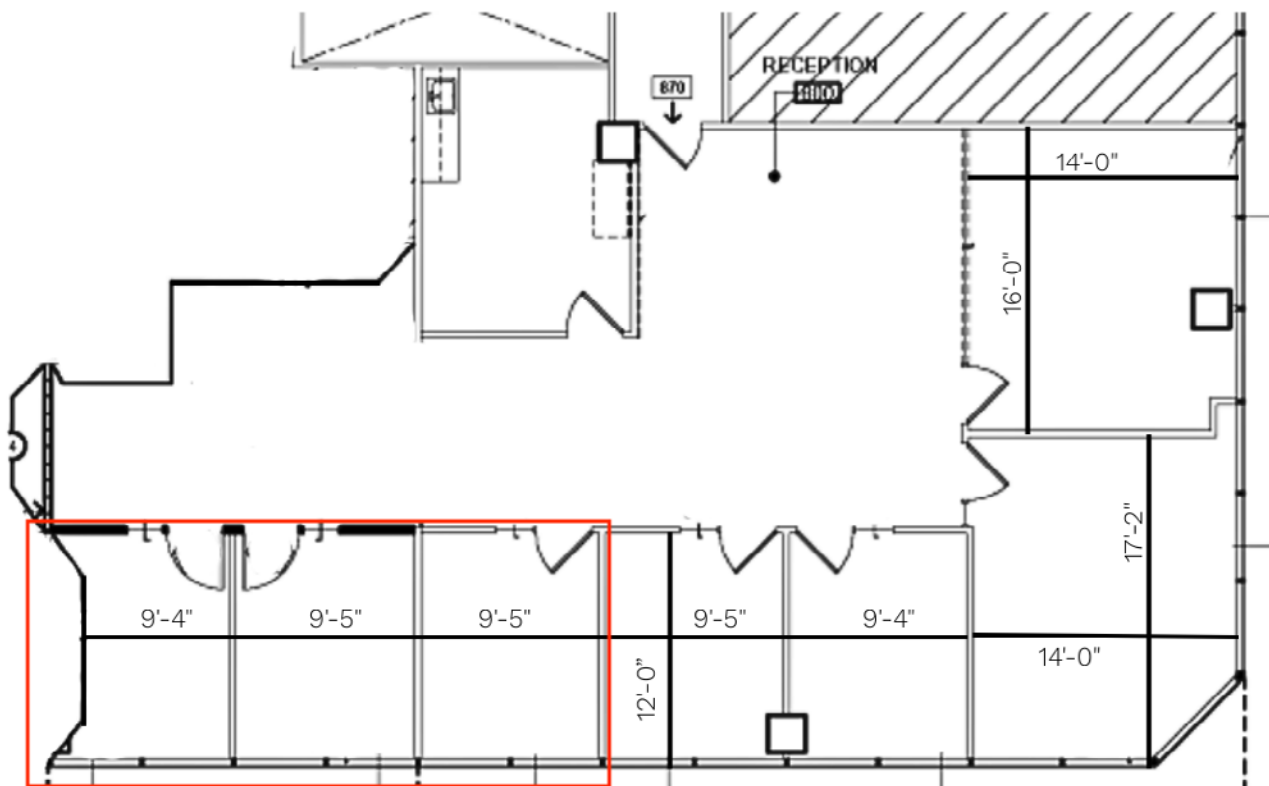
Sam Devorris
Senior Vice President
310.564.6525 mobile
sdevorris@cresa.com
BRE# 02084651

Zack Eisen
Advisor
310.795.2867 mobile
zeisen@cresa.com
BRE# 02160717

Cresa Los Angeles
1999 Avenue of the Stars, Suite 260
Los Angeles, CA 90067

Sublease

1801 Century Park East
Floor Plan - 8th Floor





Century Park Plaza

1801 Century Park East, 8th Floor

