

**FOR
LEASE**



Livermore, CA

**Multi-Tenant
Industrial Buildings
Offering Strong
Operational Flexibility**

OMP
OVERTON MOORE PROPERTIES



The Buildings

7888
MARATHON DRIVE

7650
MARATHON DRIVE



Features



Heavy Industrial (I-3)

Zoning



1/1,000

Parking



24'

Clear Height



64' (W) x 24' (D)

Typical Column Spacing



Dock and Grade

Loading



Wet Pipe

Sprinklers



2,000 Amps

Power Per Building



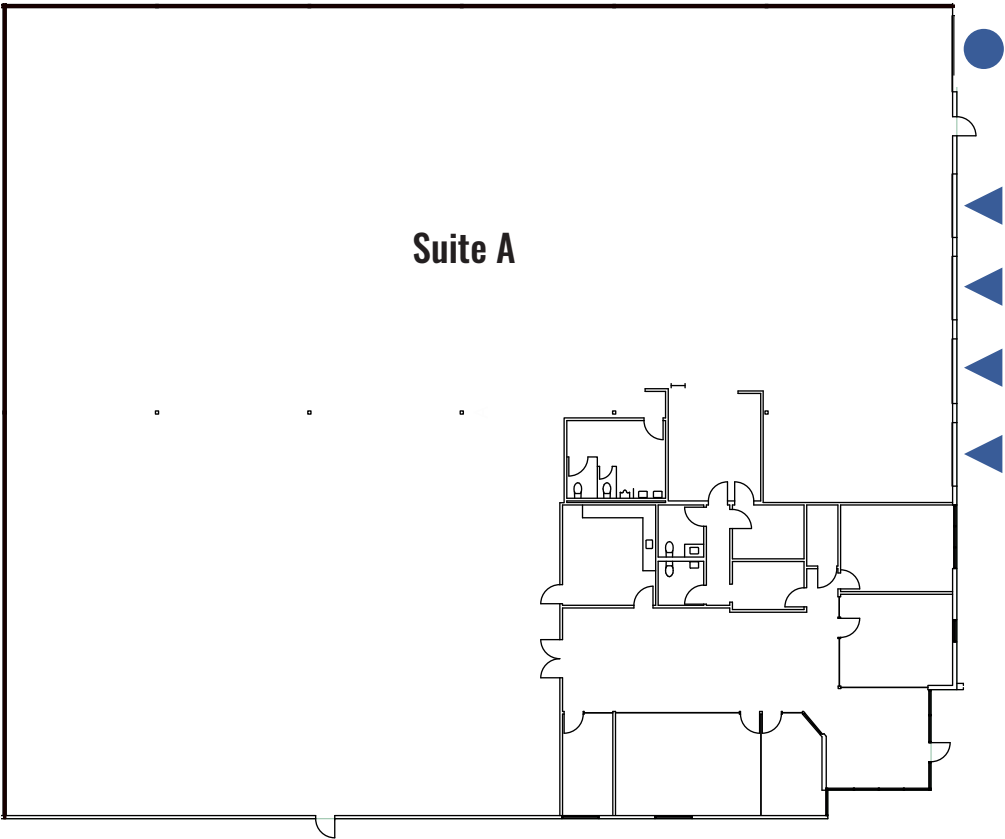
Logistics, Distribution & Manufacturing

Uses

Suite A

▲ = Dock door

● = Grade Level Door



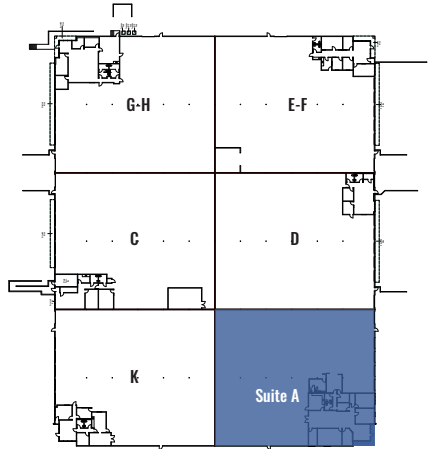
Suite A: 19,259 SF

Available May 2026

4 Dock High Doors

1 Grade Level Door

Key Site Plan



Interior Photos

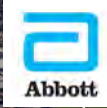
Suite A



Location Overview

San Francisco

Livermore Municipal Airport





Livermore, CA

CONTACTS

Michael Lloyd, SIOR

Executive Vice President

+1 925 227 6208

michael.lloyd@colliers.com

CA Lic. 00924182

Michael Carrigg, SIOR

Executive Managing Director

+1 925 227 6220

michale.carrigg@colliers.com

CA Lic. 01298928



This document/email has been prepared by Colliers for advertising and general information only. Colliers makes no guarantees, representations or warranties of any kind, expressed or implied, regarding the information including, but not limited to, warranties of content, accuracy and reliability. Any interested party should undertake their own inquiries as to the accuracy of the information. Colliers excludes unequivocally all inferred or implied terms, conditions and warranties arising out of this document and excludes all liability for loss and damages arising there from. This publication is the copyrighted property of Colliers and /or its licensor(s). © 2026. All rights reserved. This communication is not intended to cause or induce breach of an existing listing agreement.

OMP

