



FOR SUBLEASE 8,119 SF

**2989 WEST MAPLE LOOP DRIVE**  
**LEHI, UTAH**

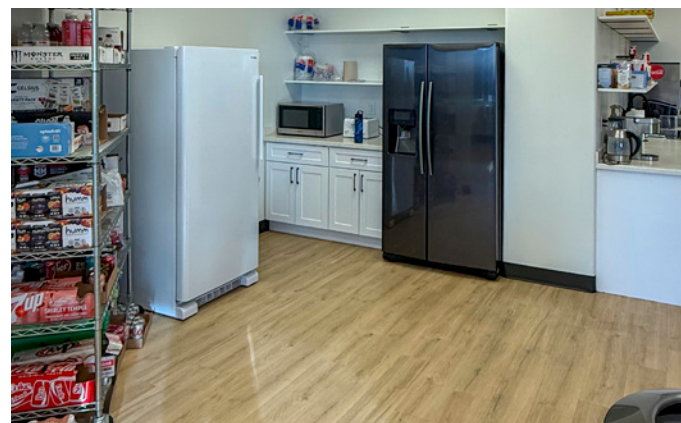
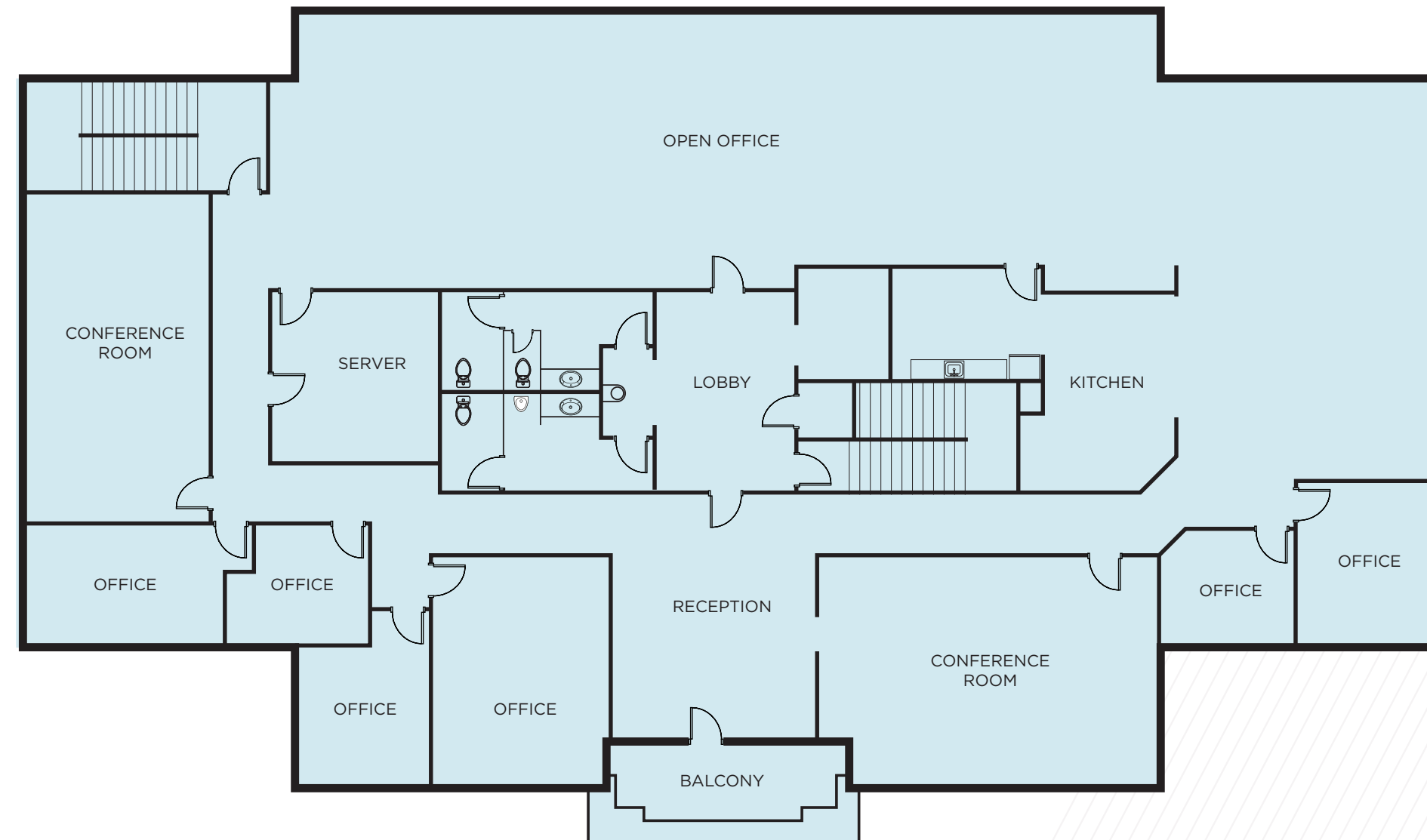
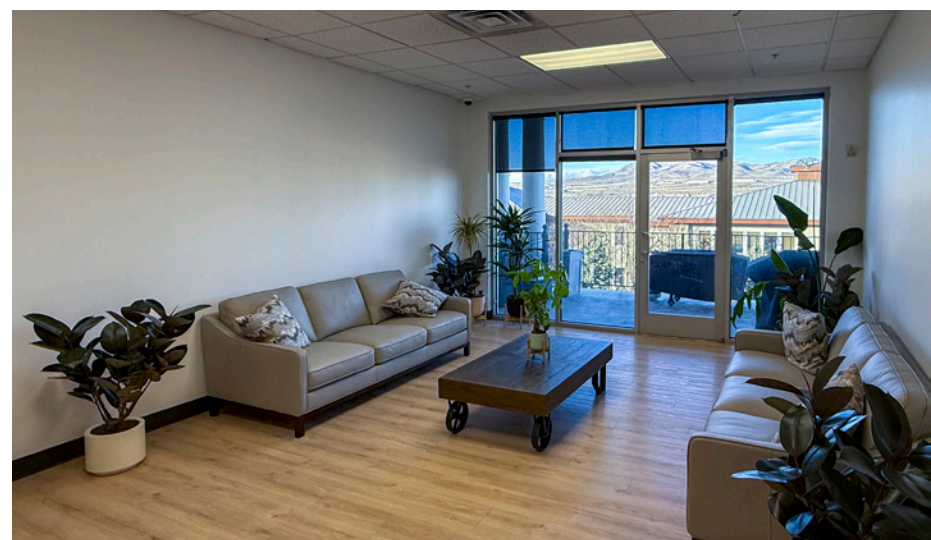
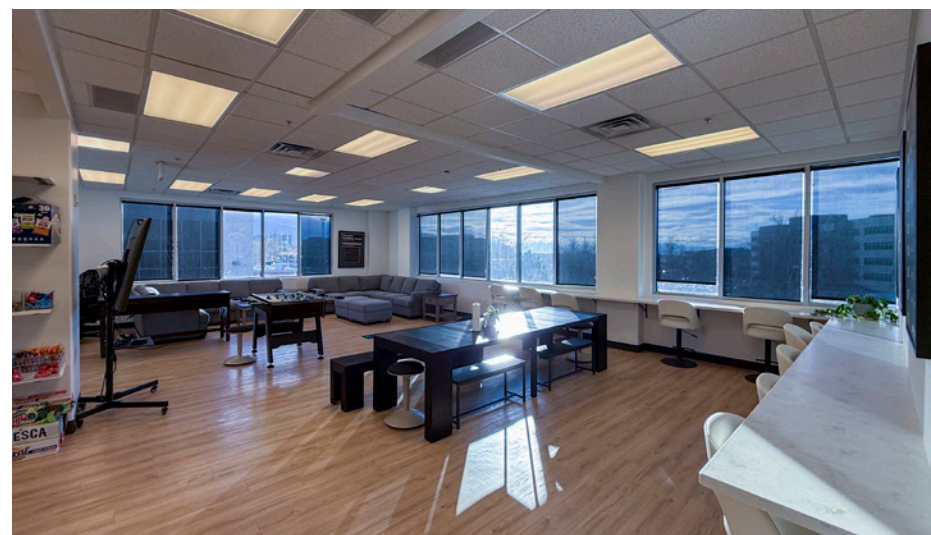




# 2989 WEST MAPLE LOOP DRIVE LEHI, UT

## Property Highlights

- 8,119 SF
- Entire Top Floor
- \$22.50 / SF Full Service
- LED 12/31/2026 or 12/31/2027
- Available Immediately
- Fully Furnished
- Private Balcony





OUTLETS AT  
TRAVERSE MOUNTAIN

Bath&BodyWorks



SKECHERS NikeFactoryStore

H&M



Auntie Anne's

Cabela's  
World's Foremost Outfitter

HARMONS  
NEIGHBORHOOD GROCER

Cafe Rio  
MEXICAN GRILL



2989 W Maple Loop Dr,  
Lehi, UT 84043



FOR MORE INFORMATION, CONTACT:

JESSE MANGUM

Managing Director

+1 801 303 5547

jesse.mangum@cushwake.com

170 South Main Street, Suite 1600

Salt Lake City, UT 84101

+1 801 322 2000

cushmanwakefield.com

©2025 Cushman & Wakefield. All rights reserved. The information contained in this communication is strictly confidential. This information has been obtained from sources believed to be reliable but has not been verified. NO WARRANTY OR REPRESENTATION, EXPRESS OR IMPLIED, IS MADE AS TO THE CONDITION OF THE PROPERTY (OR PROPERTIES) REFERENCED HEREIN OR AS TO THE ACCURACY OR COMPLETENESS OF THE INFORMATION CONTAINED HEREIN, AND SAME IS SUBMITTED SUBJECT TO ERRORS, OMISSIONS, CHANGE OF PRICE, RENTAL OR OTHER CONDITIONS. WITHDRAWAL WITHOUT NOTICE, AND TO ANY SPECIAL LISTING CONDITIONS IMPOSED BY THE PROPERTY OWNER(S). ANY PROJECTIONS, OPINIONS OR ESTIMATES ARE SUBJECT TO UNCERTAINTY AND DO NOT SIGNIFY CURRENT OR FUTURE PROPERTY PERFORMANCE.



CUSHMAN &  
WAKEFIELD

