

CHARLES SCHAFER ASSOCIATES  
 architect · planner  
 246 NEWTON SPARTA ROAD • NEWTON, N.J. 07866 973-382-1788  
 OFFICE AND WAREHOUSE DESIGN FOR LOT 16.06  
 J.B. WARD & SONS, INC.  
 NORTH CHURCH TECHNICAL CENTER, HARDYSTON, N.J.

DATE	07 / 30 / 2004
DRAWN BY	JES
CHECKED BY	

PI C 7620  
 PA 0619 B  
 PG 022506-1

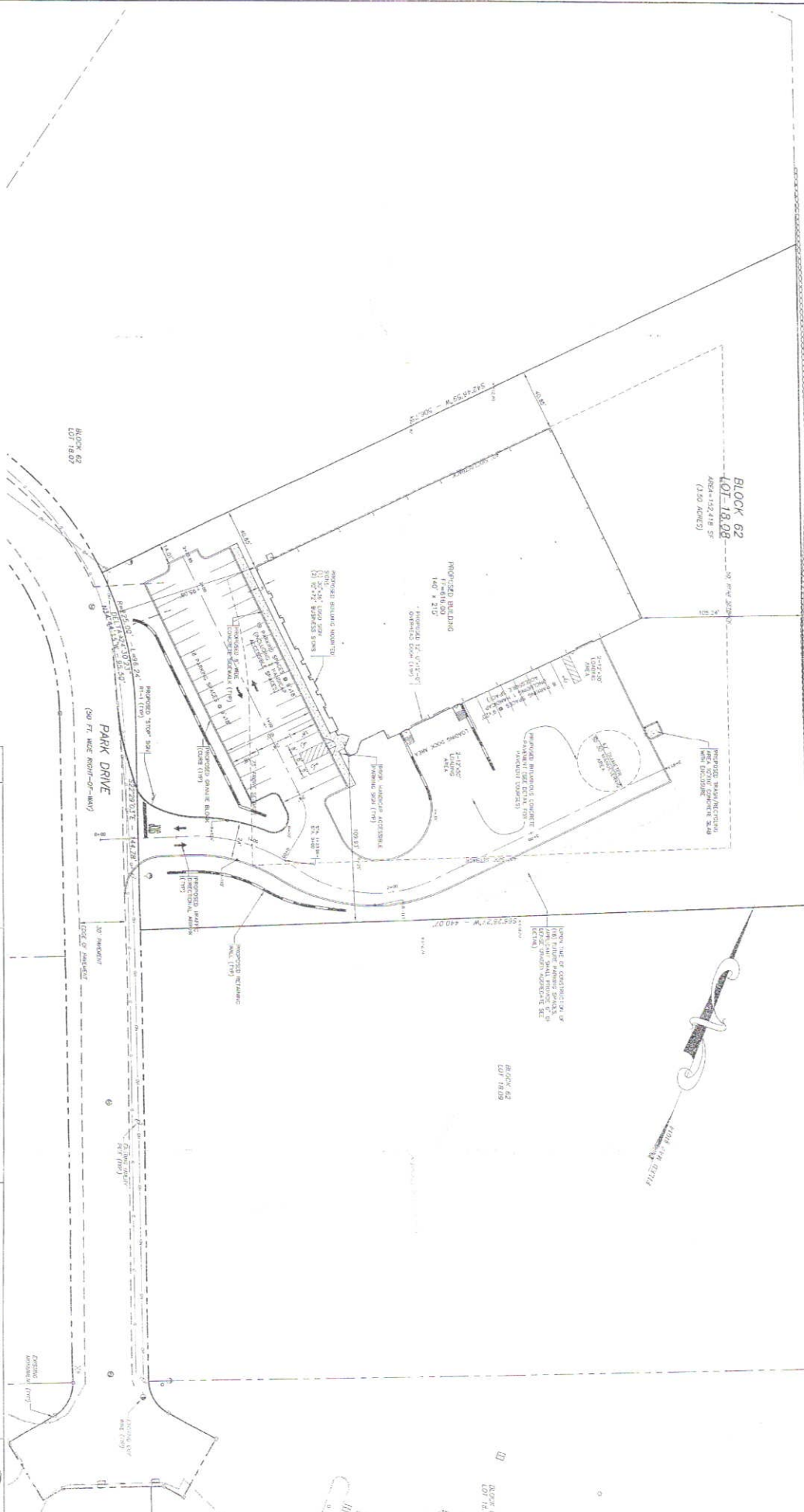
A-4A

FLOOR PLAN TEMPLATE  
 SCALE: 1/8" = 1'-0"

# 165-03

3225213 - 442 FT

**BLOCK 62**  
**LOT 18.08**  
 AREA: 132,418 SF  
 (3.03 ACRES)



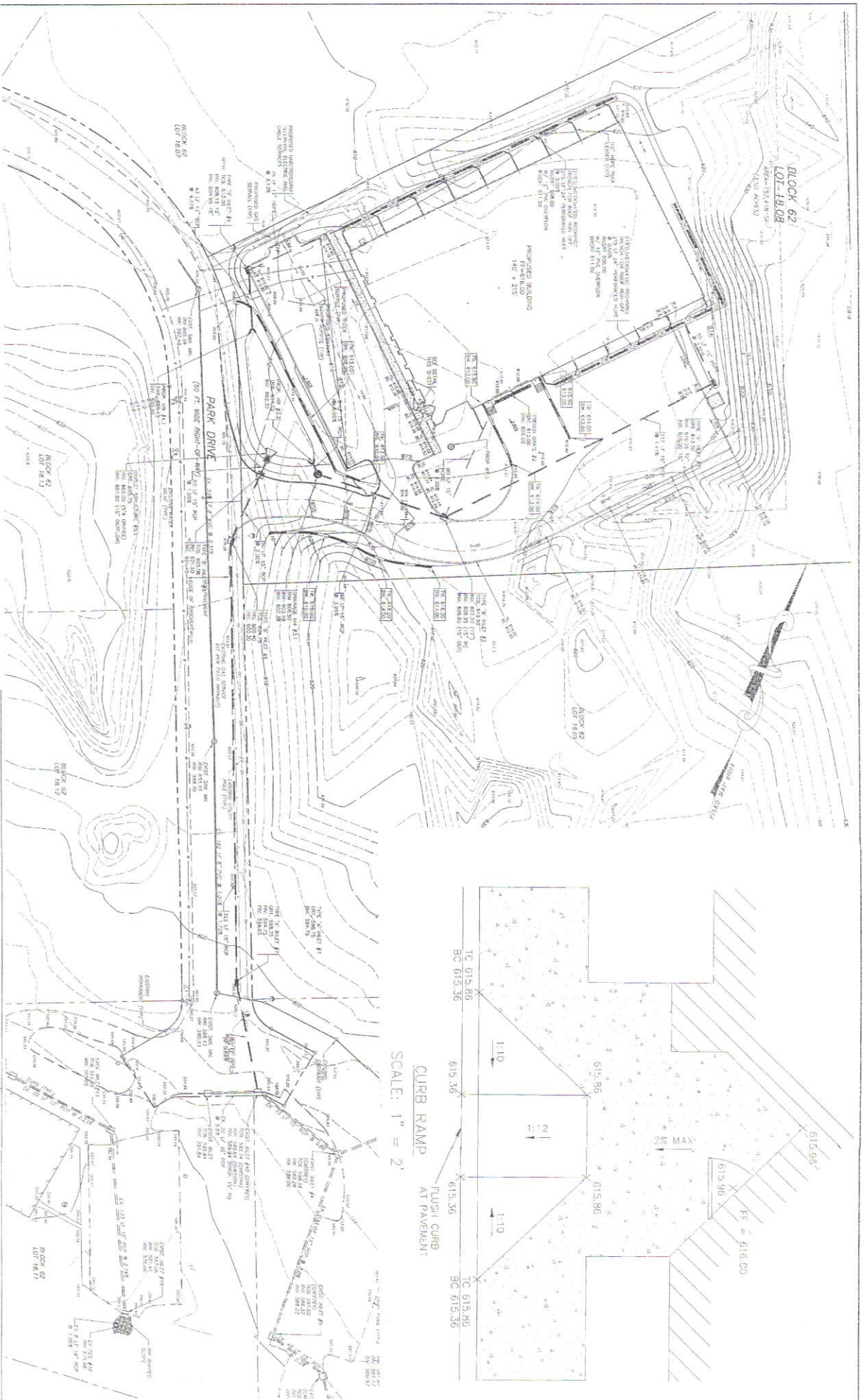
DATE	REVISION	BY	DESCRIPTION
7/26/24	PRELIMINARY AND FINAL CONCEPTS		
4/17/24	REVISIONS PER COMMENTS		
8/17/23	REVISIONS PER COMMENTS		

**DYKSTRA WALKER**  
 DESIGN GROUP  
 PROFESSIONAL ENGINEERS, PLANNERS, ARCHITECTS  
 6401E HIGHTOWER BLVD SUITE 600  
 WASHINGTON, DC 20014  
 (202) 462-1000  
 WWW.DYKSTRAWALKER.COM

**THOMAS F. GRAHAM, P.E.**  
 PROFESSIONAL ENGINEER, No. 00311881

**SITE LAYOUT PLAN**  
**PRELIMINARY & FINAL SITE PLAN**  
 BLOCK 62 LOT 18.08  
 PARK DRIVE  
 TOWNSHIP OF HARDYSTON  
 SUSSEX COUNTY  
 NEW JERSEY

DATE: 11.14.23  
 DRAWN BY: DWG  
 CHECKED BY: PJA  
 DESIGNER: JLS  
 PROJECT NO.: 23-011



DATE	DESCRIPTION
11/17/24	FOR 2024 & 2025 PRELIMINARY CONCEPTS
11/17/24	PROPOSED 2024-2025 CONCEPTS
11/27/24	REVISIONS TO CONCEPTS FOR 2024-2025 CONCEPTS
11/27/24	REVISIONS TO CONCEPTS FOR 2024-2025 CONCEPTS

**DYKSTRA WALKER**  
**DESIGN GROUP**  
 PROFESSIONAL ENGINEERS PLANNERS ARCHITECTS  
 34001 N. HUNTERS LANE, SUITE 200, FARMINGTON, NJ 07031  
 PHONE: (908) 826-8000 FAX: (908) 826-8001  
*Thomas F. Graham, P.E.*  
 THOMAS F. GRAHAM, P.E.  
 PROFESSIONAL ENGINEER, E.L. REG. NO. 33888

**GRADING & UTILITY PLAN**  
**PRELIMINARY & FINAL SITE PLAN**  
 BLOCK 62 LOT 18.08  
 PARK DRIVE  
 TOWNSHIP OF HADDYSTON  
 SUSSEX COUNTY  
 NEW JERSEY

DATE: 11/17/24  
 DRAWN BY: JMS  
 CHECKED BY: JMS  
 SCALE: AS SHOWN  
 SHEET NO. 1 OF 1