



# GREENSBORO PARK

8180 & 8200 Greensboro Drive  
Tysons, VA



**AVISON  
YOUNG**





# REVITALIZE

Extensive lobby renovations and upgrades in both 8180 and 8200 Greensboro Drive.



Tenant only Conference Centers and Pre-Function Lounge redesign and upgrade in 8200 Greensboro Drive.



Tenant Lounge expansion and upgrade in 8180 Greensboro Drive.



Fitness Center renovation and expansion at 8200 Greensboro Drive.



Common area Elevator Lobby and Corridor upgrades in 8180 and 8200 Greensboro Drive.



Brand new Outdoor Courtyard Area with hardscaping, seating and wifi between 8180 and 8200 Greensboro Drive.



[CLICK TO TOUR](#)

8200 LOBBY/LOUNGE



[CLICK TO TOUR](#)

8180 LOBBY/LOUNGE



# HIGHLIGHTS

8180 and 8200 Greensboro Drive are part of a two-building complex, Greensboro Park, which is LEED Gold Certified, Wired Certified Gold and Fitwel certified and totals approximately 514,048 rentable SF.



On site amenities include:



Rideshare account during business hours to Tysons Corner, Spring Hill, and Greensboro Metro Stations



Two Conference Centers with Pre-Function Lounge



Tenant Lounge with Games and Wifi



Expanded Fitness Center with Showers and Lockers



Boulevard Café



Outdoor Lounge with Bocce



Ample Parking at 3.0 spaces/1,000 SF



Electric Car Charging Stations



Bike Room & Tune-up Station



Dry Cleaners



Easy access to Hot Lanes, I-495 and I-66

TENANT LOUNGE





# WELLNESS

## Fitwel-Certified

Greensboro Park has been awarded a Fitwel 1 Star Rating by the Center for Active Design. Greensboro Park joins buildings, sites, and communities from around the world as part of Fitwel Certification System, the world's leading certification system committed to building health for all.



### Outdoor Areas

Tenants enjoy easy access to outdoor areas with lots of sunshine



### On-Site Activity

On-site fitness available plus easy walkability to public transit



### Healthy Options

Nearby farmers market and an unbeatable selection of eateries



### Padel Ball

Coming soon to the premises, offering tenants another fun way to stay active.







FITNESS CENTER

 CLICK TO TOUR

CONFERENCE CENTER #1

 CLICK TO TOUR

# ON-SITE AMENITIES

BOULEVARD CAFE

 CLICK TO TOUR

CONFERENCE CENTER #2

 CLICK TO TOUR



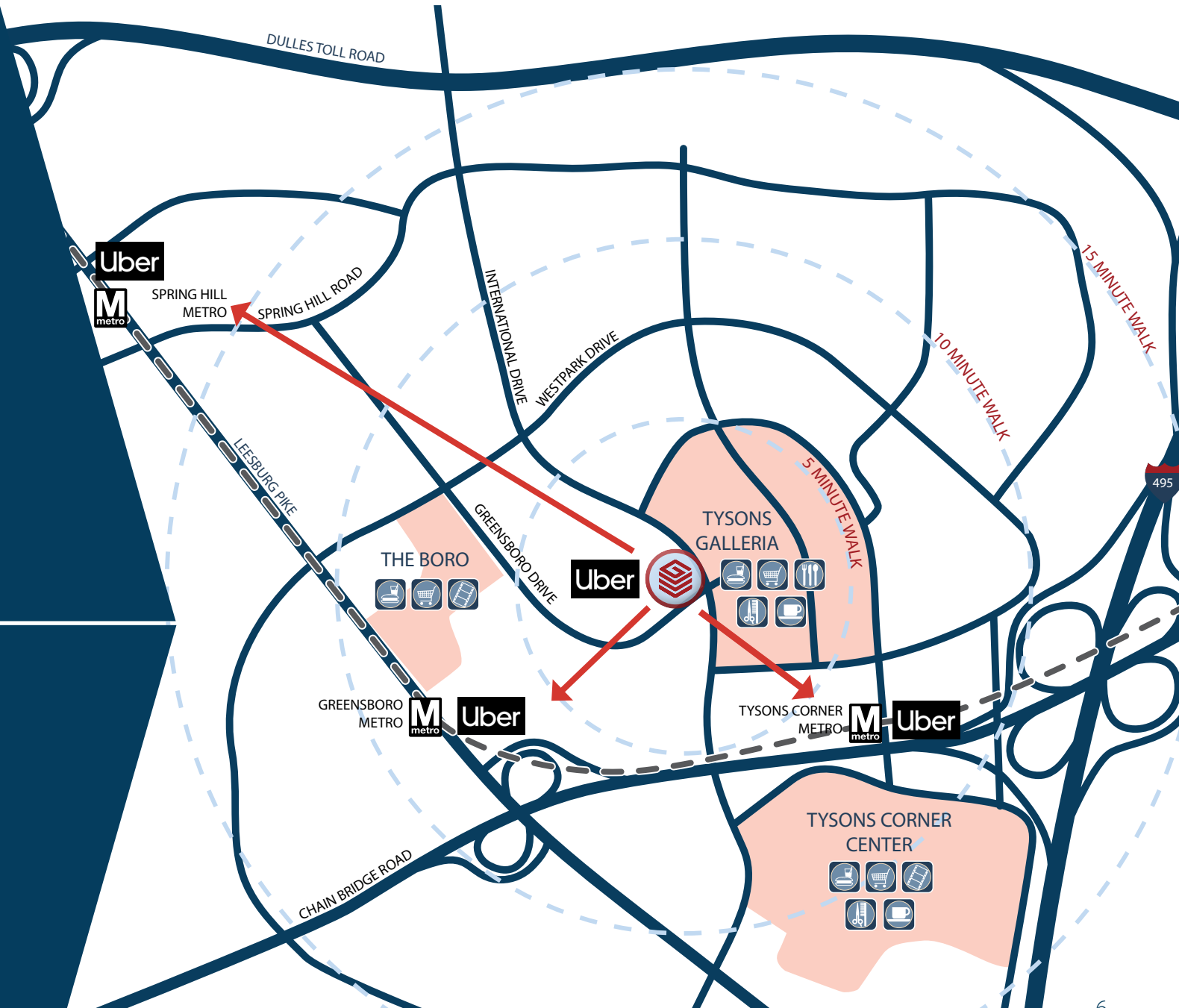
# AT THE CORNER OF GREENSBORO AND EVERYTHING

## Uber

FOR BUSINESS

Greensboro Park provides a tenant-only Uber account during normal business hours to Greensboro, Tysons Corner and Spring Hill Metro Stations.

# ACCESS





## TYSONS GALLERIA

The Cheesecake Factory	Maggiano's Little Italy
CMX Stone Bar	The Palm
Empanadas de Mendoza	P.F. Chang's
Entyse	Paul
Fogo de Chão	Andy's Pizza
Founding Farmers	Ralph's Coffee
Jiwa Singapura	Sweet Green
Lady M Confections	Wildfire
Lebonese Taverna	Yardhouse

## THE BORO

70,000 SF Whole Foods	Poki DC
430,000 SF of Retail	Santouka Ramen
2,000 Residential Units	Tasty Kabob
19,000 SF Library	Tropical Smoothie Cafe
Look Dine-In Cinemas	Colour Bar
Bluestone Lane	Ethan Allen
Circa	LaserAway
El Bebe	MyEyeDr
Fish Taco	Paper Source
Flower Child	Roosters
Jeni's Splendid Ice Creams	The Shade Store
North Italia	Tyson's Nail Lounge
Paris Baguette	F45 Training

## TYSONS CORNER CENTER

&pizza	Eddie V's
Barrel & Bushel	Five Guys
California Pizza Kitchen	La Sandia
California Tortilla	McDonald's
Capital Grille	Panda Express
Charleys Philly Steaks	Seasons 52
Chipotle Mexican Grill	Shake Shack
Chopathi's Indian Kitchen	Silver Diner
Coastal Flats	T.G.I. Friday's
Earl's Kitchen + Bar	Wasabi

## HOTELS

1. The Ritz-Carlton, Tysons Corner
2. DoubleTree by Hilton McLean Tysons
3. Courtyard by Marriott Tysons McLean
4. Hyatt Regency Tysons Corner Center
5. Hilton McLean Tysons
6. Residence Inn by Marriott
7. Hilton Garden Inn Tysons Corner
8. Tysons Corner Marriott

# AMENITIES





# 8180



## BUILDING AMENITIES

-  Tenant Lounge with games and wifi
-  Boulevard Café
-  Dry Cleaners

FLOOR	AVAILABILITY
4th	<u>CONTIGUOUS</u> - 9,609 SF 402 - 5,196 SF 404 - 4,413 SF
5th*	<u>CONTIGUOUS</u> - 24,245 SF 525/550/585 - 11,060 SF available 2/1/26 500/501/575 - 13,185 SF available 4/1/26 *Full 5th floor available 2026
6th	600 - 7,182 SF - Plug & Play 630 - 6,411 SF
7th	720 - 2,734 SF 750 - 7,536 SF available 7/1/26
8th	850 - 13,567 SF
9th	950 - 3,937 SF





GREENSBORO PARK

## 4TH FLOOR

SUITES 402/404 - 9,609 SF



8180

Greensboro Drive



## GREENSBORO PARK

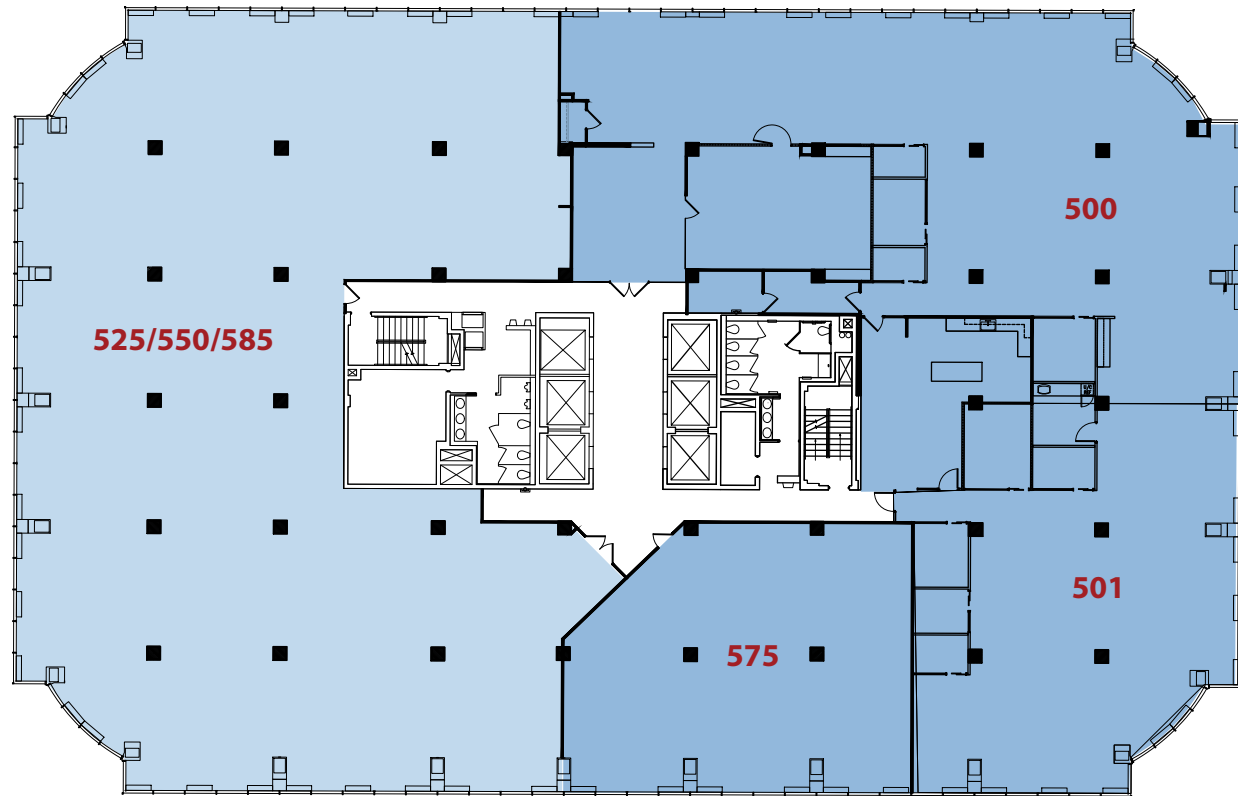
### 5TH FLOOR

**CONTIGUOUS** - 24,245 SF

SUITES 525/550/585 - 11,060 SF  
(AVAILABLE 2/2026)

SUITES 500/501/575 - 13,185 SF  
(AVAILABLE 4/2026)

CONTIGUOUS with 4TH FLOOR  
33,854 SF



8180

Greensboro Drive





GREENSBORO PARK

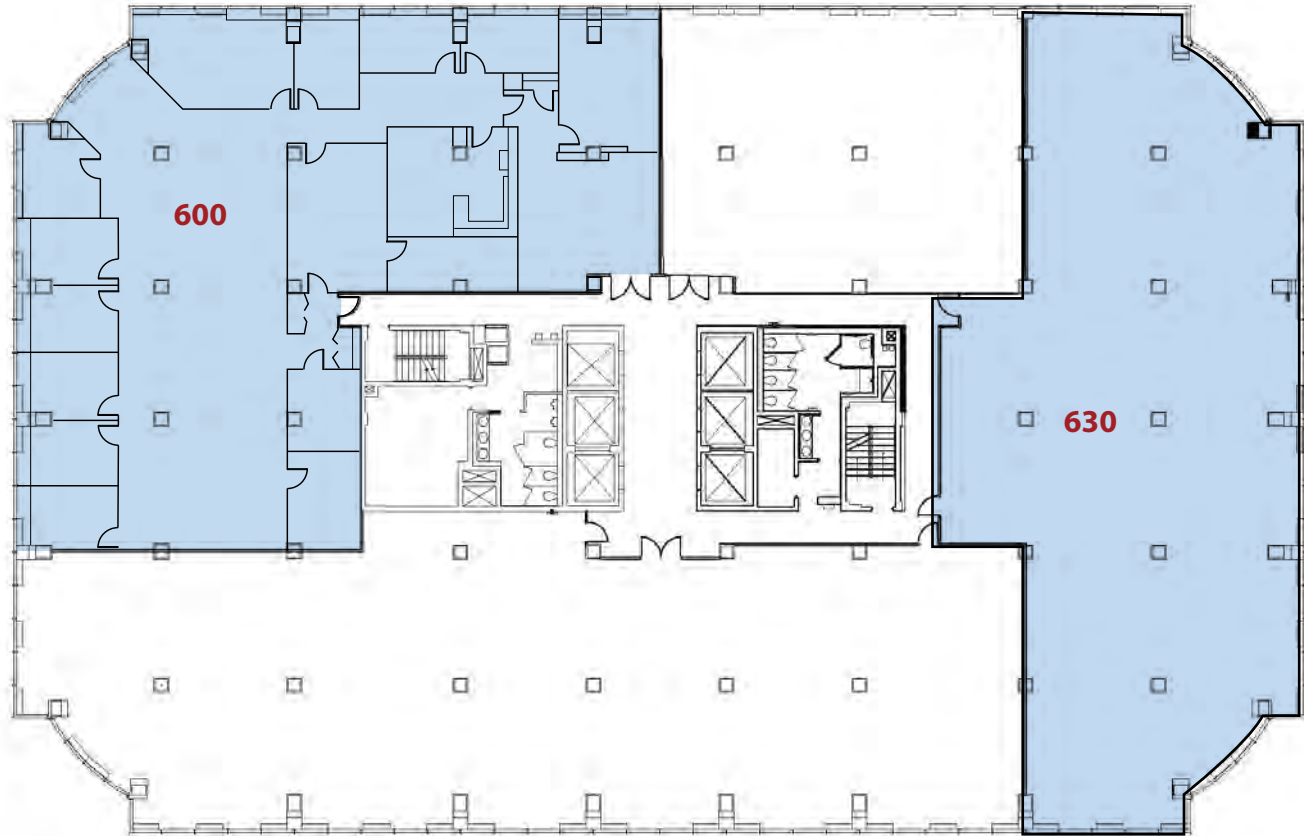
## 6TH FLOOR



**PLUG AND PLAY  
FULLY FURNISHED**

SUITE 600 - 7,182 SF

SUITE 630 - 6,411 SF



8180

Greensboro Drive

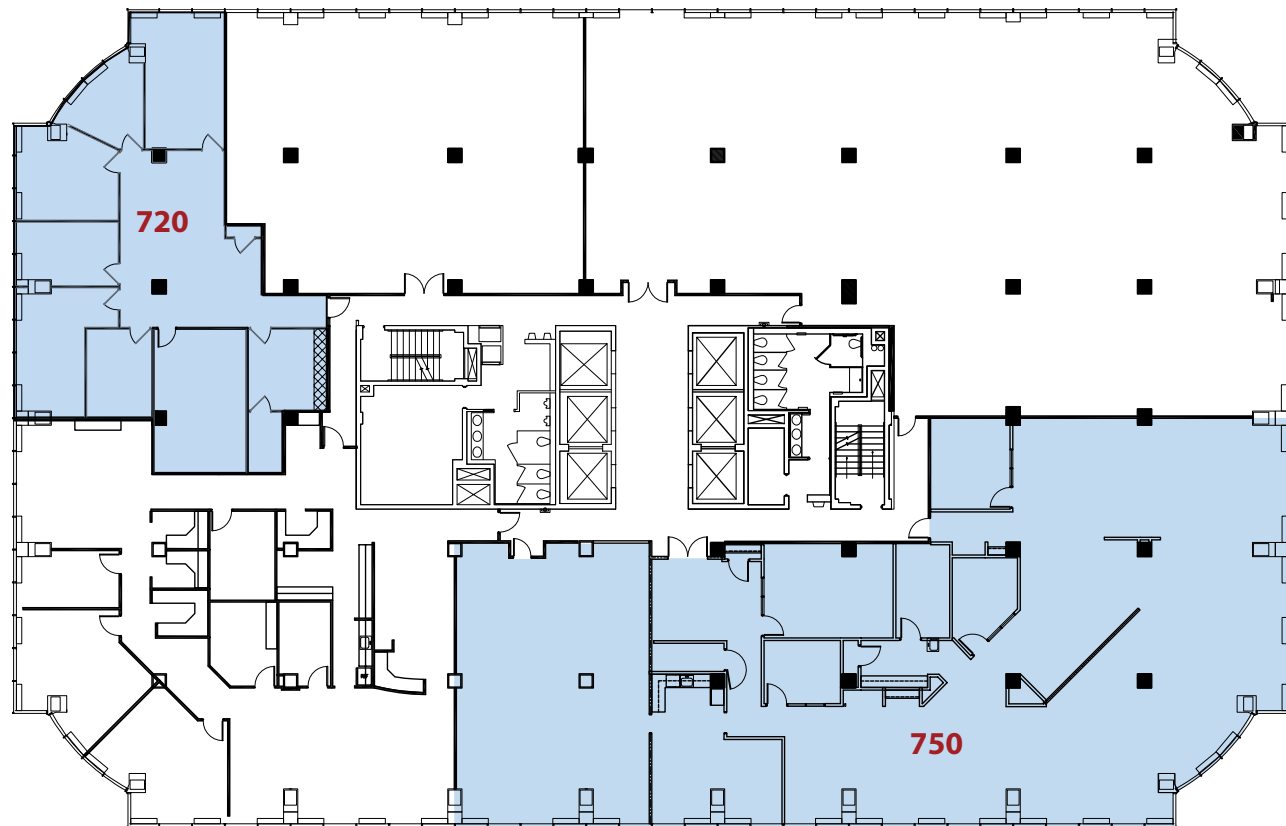


# GREENSBORO PARK

## 7TH FLOOR

SUITE 720 - 2,734 SF

SUITE 750 - 7,536 SF  
(AVAILABLE 7/2026)



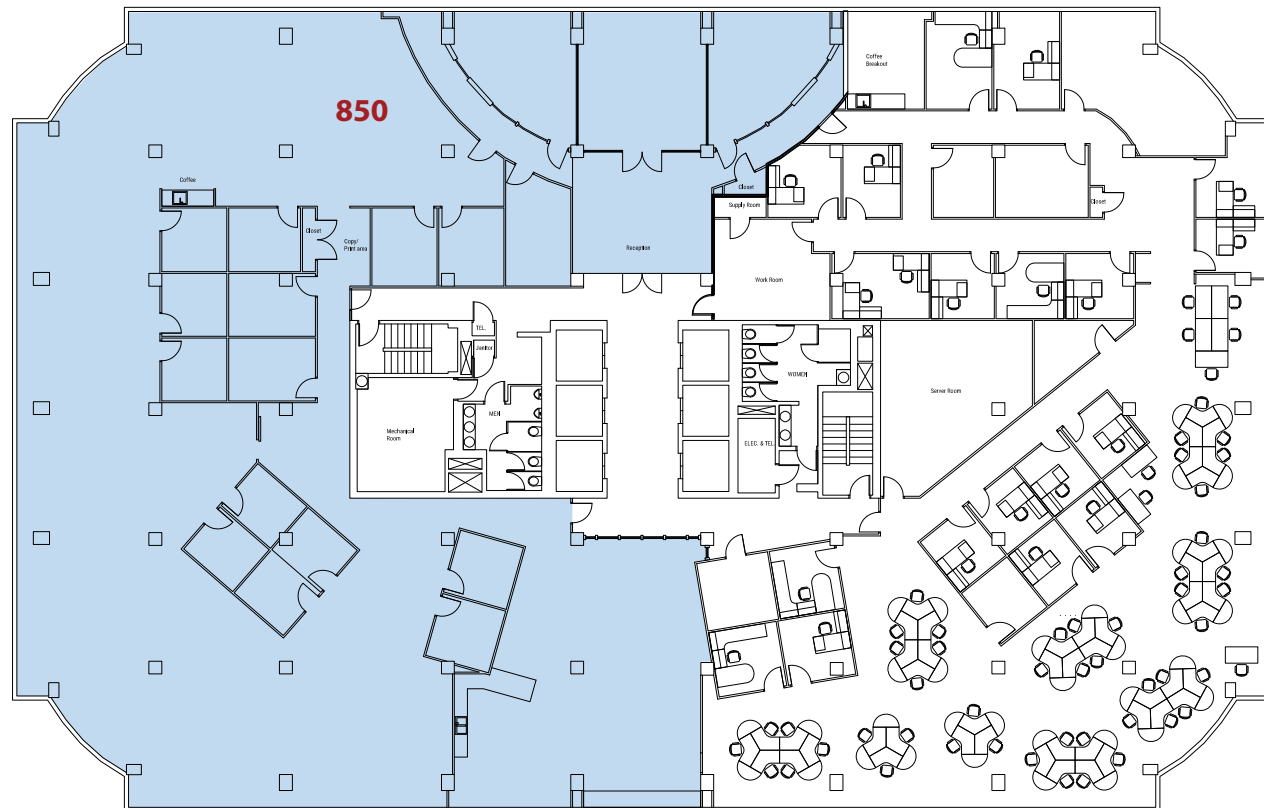




GREENSBORO PARK

## 8TH FLOOR

SUITE 850 - 13,567 SF



8180  
Greensboro Drive



GREENSBORO PARK



## 9TH FLOOR

SUITE 950 - 3,937 SF



8180

Greensboro Drive






8200



**BUILDING AMENITIES**

 Two Conference Centers with Pre-Function Lounge

 Expanded Fitness Center with showers and lockers

FLOOR	AVAILABILITY
2nd	<u>CONTIGUOUS- 3,843 SF</u> 203 - 945 SF 250 - 2,898 SF available 4/1/26
3rd	<u>CONTIGUOUS- 6,105 SF</u> 302 - 2,678 SF 350 - 3,427 SF
4th	401 - 3,867 SF
5th	<u>FRAMEWORK</u> 525 - 4,744 SF - SPEC SUITE
6th	601 - 2,653 SF 650 - 7,990 SF
11th	1175 - 3,372 SF
12th	Entire Floor - 20,011 SF



# GREENSBORO PARK

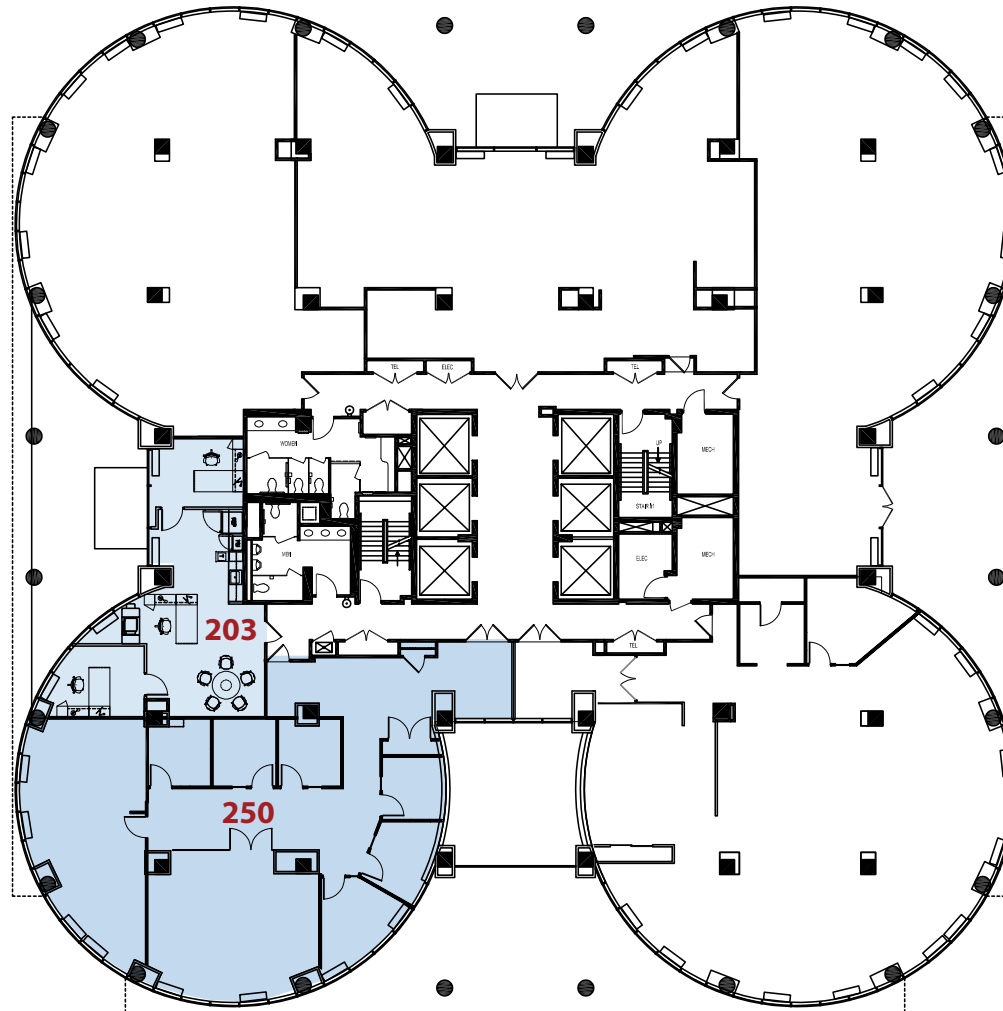
## 2ND FLOOR

**CONTIGUOUS** - 3,843 SF

SUITE 203 - 945 SF

SUITE 250 - 2,898 SF

(AVAILABLE 4/2026)



8200

Greensboro Drive



# GREENSBORO PARK

## 3RD FLOOR

**CONTIGUOUS** - 6,105 SF

SUITE 302 - 2,678 SF

SUITE 350 - 3,427 SF



8200

Greensboro Drive

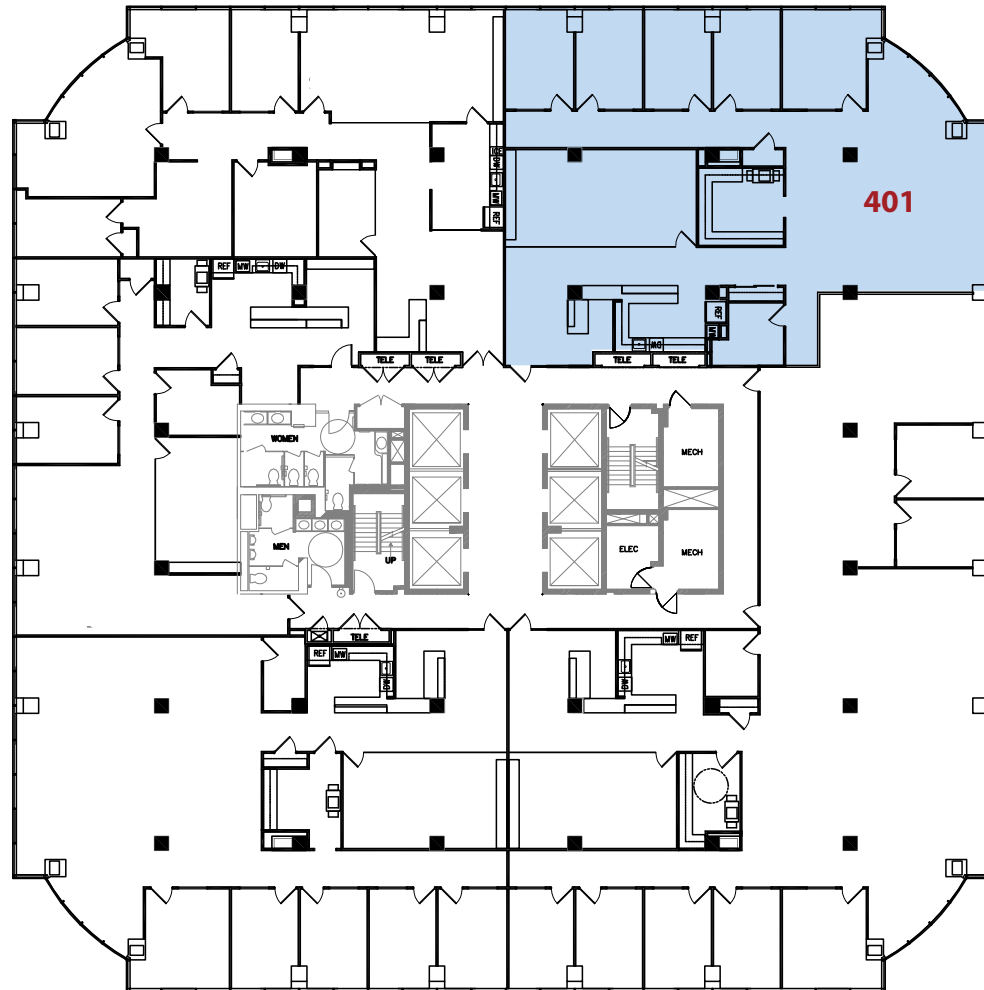




# GREENSBORO PARK

## 4TH FLOOR

SUITE 401 - 3,867 SF



8200

Greensboro Drive



# GREENSBORO PARK

## 5TH FLOOR

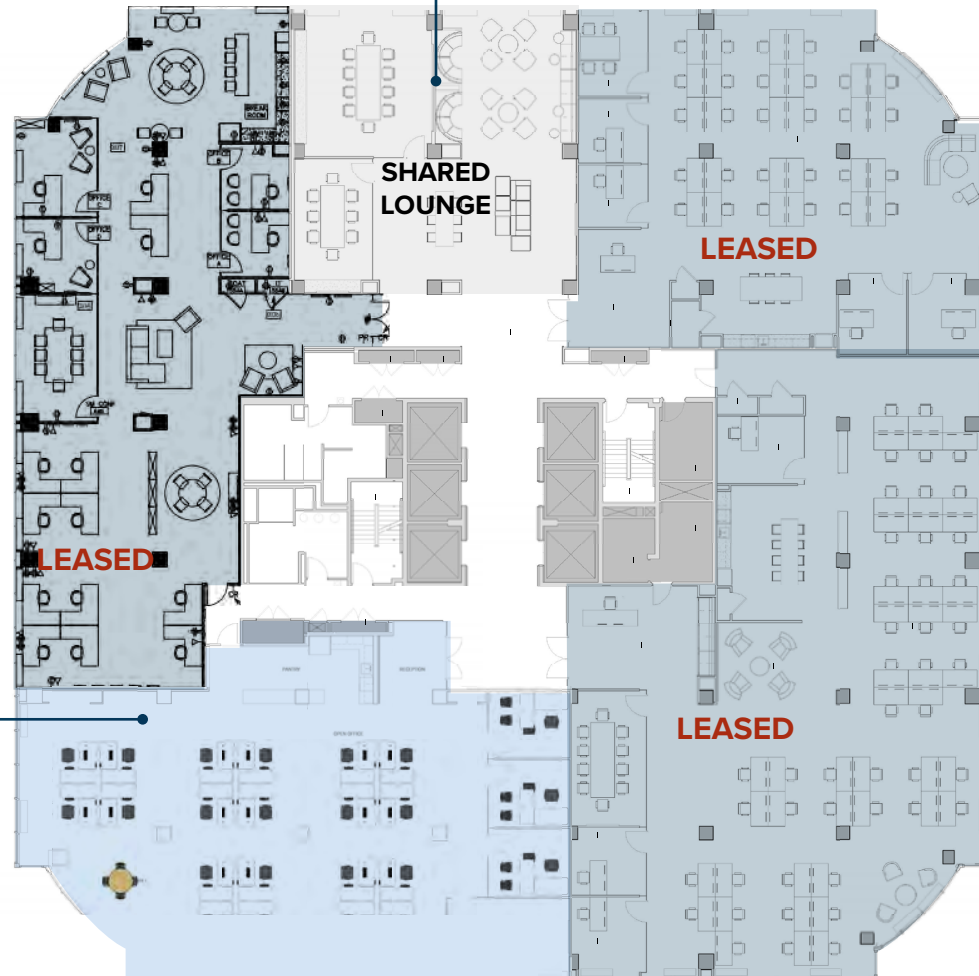
### FRAMEWORK LAYOUT



#### Common Lounge

- Seating/Workstations
- 10 Person Conference
- 8 Person Conference

[CLICK TO TOUR](#)



#### SPEC SUITE 525

##### 4,744 SF

- 20 Workstations
- 1 Conference Room
- 2 Huddle Areas
- 3 Offices
- Kitchen
- Reception
- Total Seats=25

\*Suite furniture configurations are hypothetical



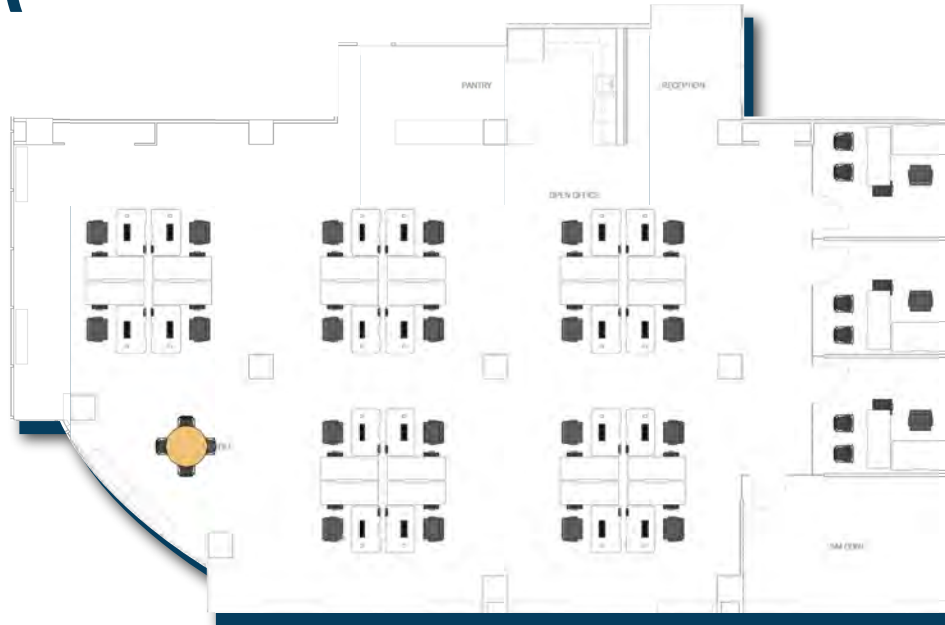
GREENSBORO PARK

## 5TH FLOOR

FURNISHED  
BY VARI

### SPEC SUITE 525 4,744 SF

- 29 Workstations
- 1 Conference Room
- 2 Huddle Areas
- 3 Offices
- Kitchen
- Reception
- Total Seats=33



#### WORK

- Unique Office Suites
- Creative Design



#### FLEX

- Fitted with or without workstations



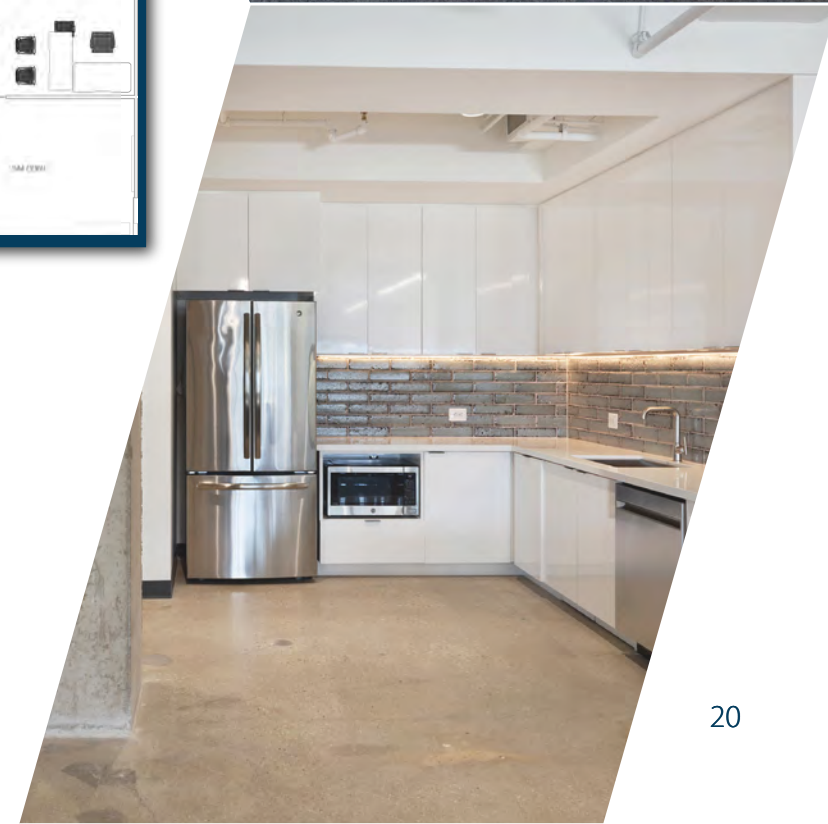
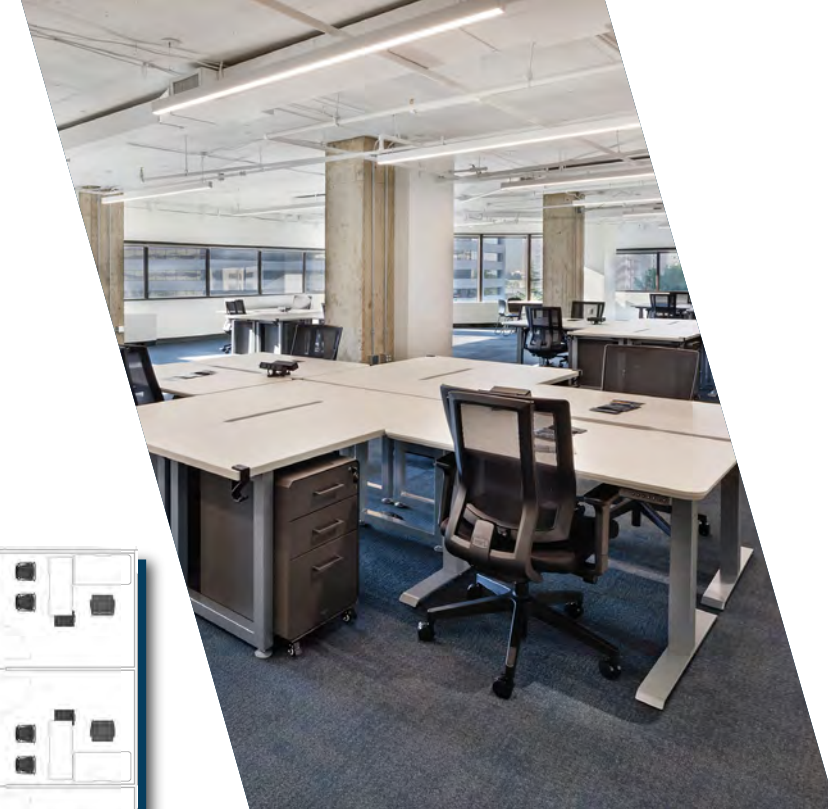
#### MEET

- Shared conferencing
- Collaborative spaces



#### GROW

- Efficient planning
- Flexible lease terms



8200

Greensboro Drive

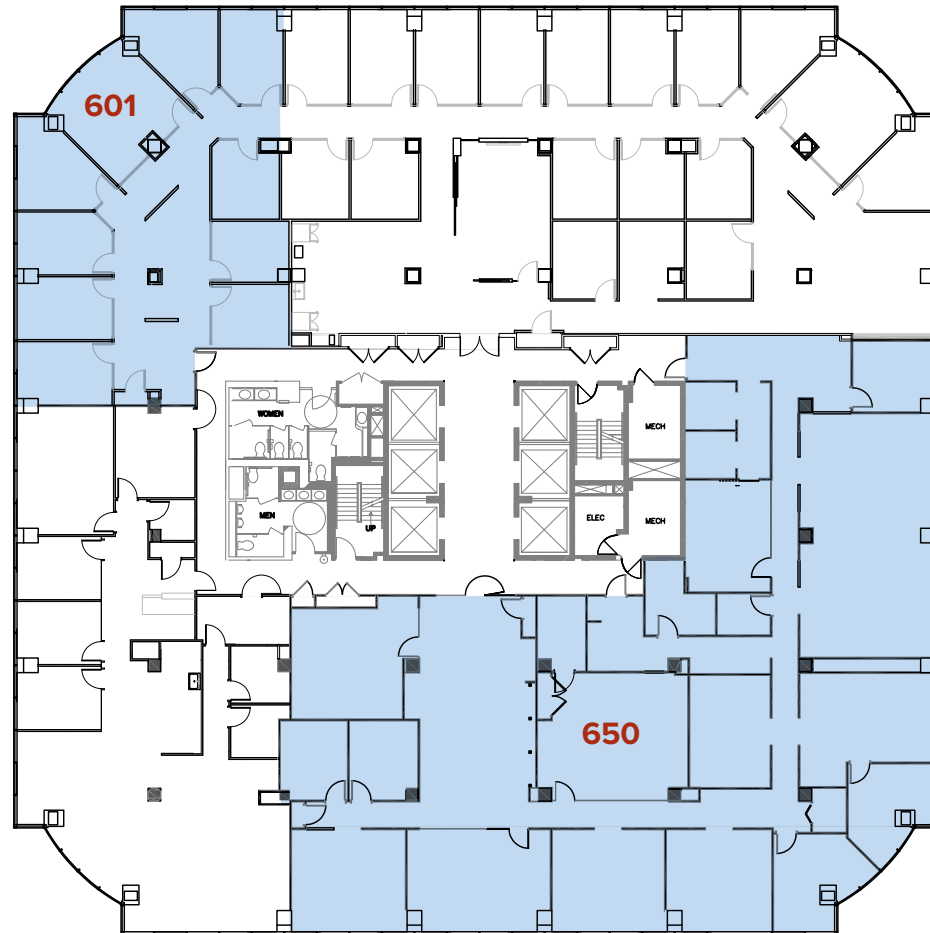




# GREENSBORO PARK

## 6TH FLOOR

SUITE 601 - 2,653 SF  
SUITE 650 - 7,990 SF



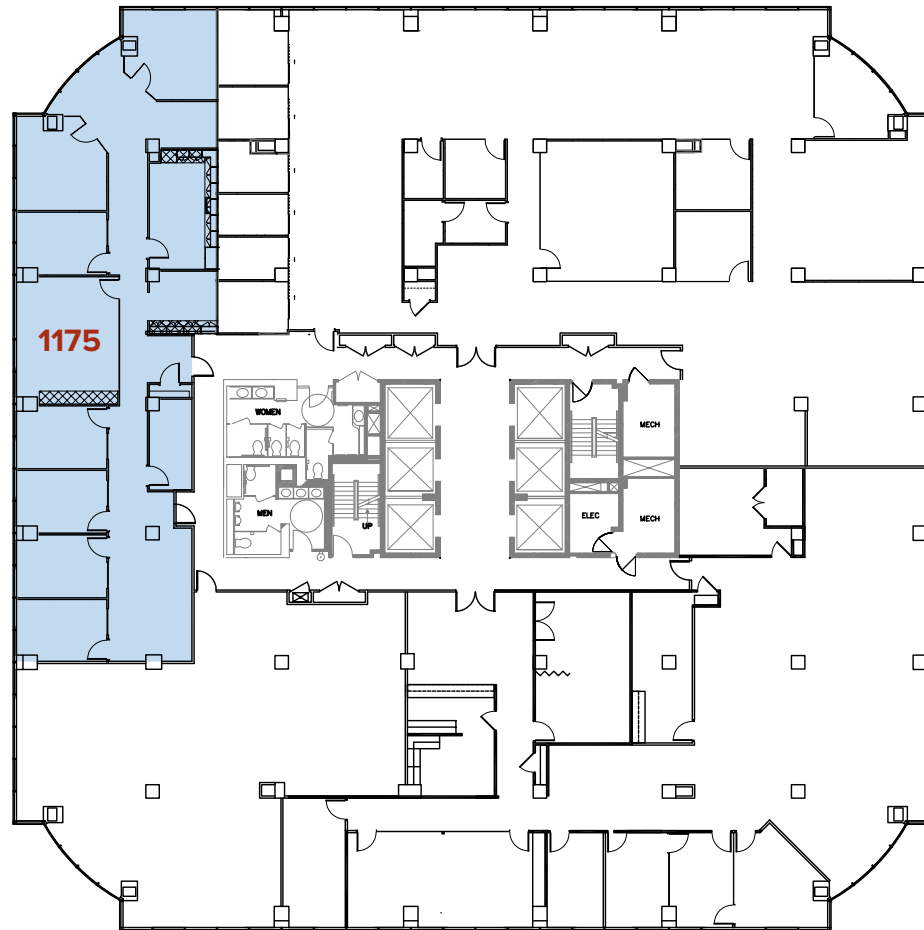
8200  
Greensboro Drive



GREENSBORO PARK

## 11TH FLOOR

SUITE 1175 - 3,372 SF



8200

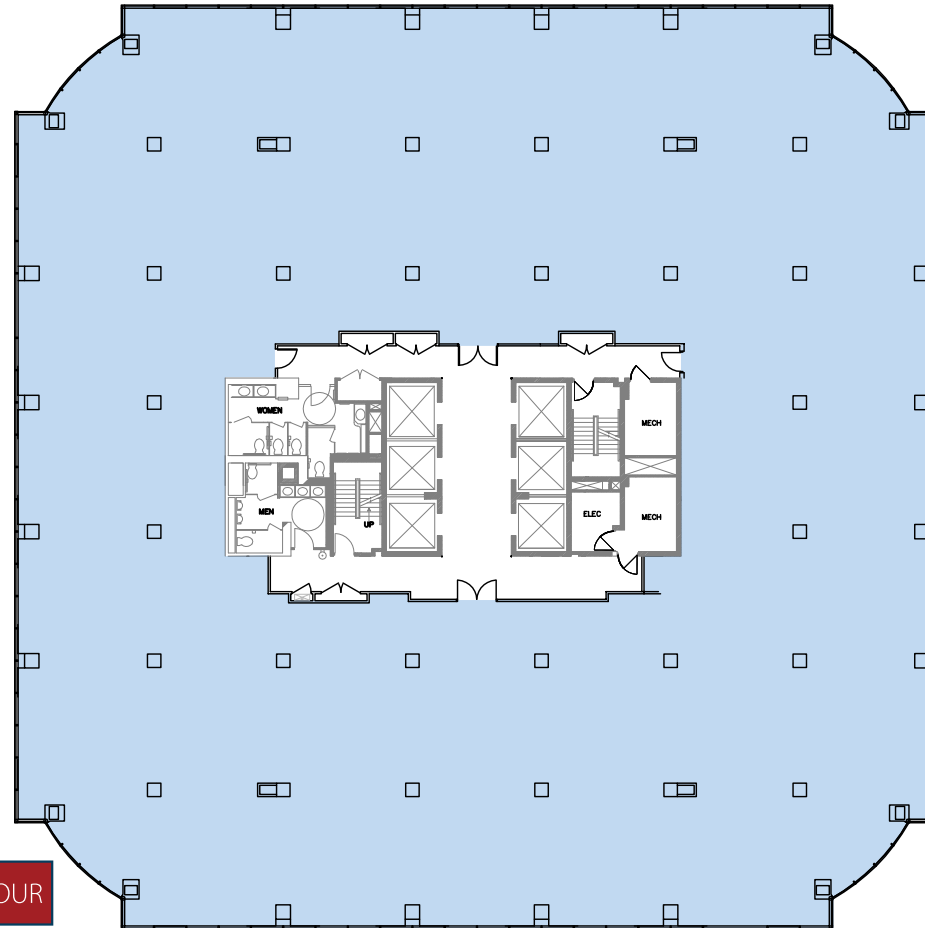
Greensboro Drive



GREENSBORO PARK

## 12TH FLOOR

ENTIRE FLOOR - 20,011 SF



 CLICK TO TOUR

8200  
Greensboro Drive





# GREENSBORO PARK

**Nick Gregorios**

Principal  
703.752.4922  
nicholas.gregorios@avisonyoung.com

**Peter Berk**

Principal  
703.752.4920  
peter.berk@avisonyoung.com

**Wesley Preuss**

Principal  
202.644.8691  
welsey.preuss@avisonyoung.com

8300 Greensboro Drive, Suite 275  
Tysons, VA 22102

**avisonyoung.com**

© 2026. Avison Young. Information contained herein was obtained from sources deemed reliable and, while thought to be correct, have not been verified. Avison Young does not guarantee the accuracy or completeness of the information presented, nor assumes any responsibility or liability for any errors or omissions therein.

Owned by:

VELOCIS

altus  
REALTY

AVISON  
YOUNG