

# HIGHWAY 27 SPACE AVAILABLE

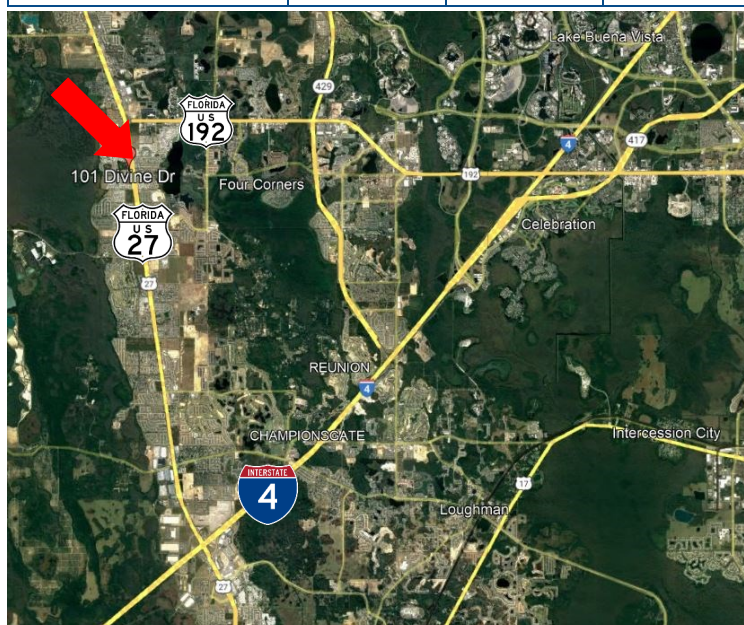
101 Divine Dr, DAVENPORT FL, 33897



## PROPERTY HIGHLIGHTS

- 1,650 Square Feet Available
- 2nd Story space fronting Hwy 27 in Davenport FL
- Great for office use
- Pylon and Façade signage available
- Located at a Signalized intersection
- Sits at the entrance to Polo Park, an active 55+ Golf Community with 830 residences
- 15,000 square foot retail/office plaza
- Just south of US 192 & Hwy 27 Intersection
- Approximately 7 miles north of I-4
- Just 6 miles from Walt Disney World
- Traffic Counts: 60,000 VPD on Hwy 27

Demographics	1-Mile	3-Mile	5-Mile
Population	9,131	46,855	77,498
Average HH Income	\$70,996	\$72,525	\$74,652



Drew Shofner

321-295-3998

drew@blurockcommercial.com

