

MOUNT KISCO FLEX BUILDING

A DYNAMIC BUSINESS ENVIRONMENT LOCATED IN THE
PROMINENT HUB OF NORTHERN WESTCHESTER



185 Kisco Avenue

Mount Kisco, NY 10549 • Office ♦ Warehouse ♦ Showroom

THREE SPACES AVAILABLE

HIGHLIGHTS & AMENITIES

- ♦ Ideally located, Updated Two Story / Flex / Office / Medical / Warehouse Building with Ample on Site Parking
- ♦ Within walking distance .5 mile to the RR; Saw Mill Pkwy; Rt 117; Rt 133 and Village of Mt Kisco.

1st Floor, St. 403

Base Rental Rate: \$24.00 /SF/Yr Space Available: 1,650 RSF
Date Available: 2025 Floor: 1st Floor
Service Type: Modified Gross Lease Term: 5 - 10 Years
Space Use: Office / Showroom

1st Floor, St. 203

Base Rental Rate: \$30.00 /SF/Yr Space Available: 2,620 SF
Date Available: 2025 Floor: 1st Floor
Service Type: Modified Gross Lease Term: 5 - 10 Years
Space Use: Professional Service,
Showroom, Office

2nd Floor, Ste. 606

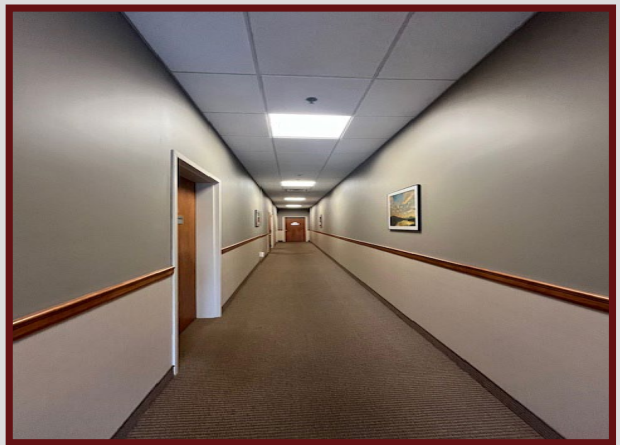
Base Rental Rate: \$22.00 /SF/Yr Space Available: 2,825 RSF
Date Available: 2025 Floor: 2nd Floor
Service Type: Modified Gross Lease Term: 5 - 10 Years
Space Use: Office / Showroom

Modern Loft Style Showroom / Office w/ Exposed High Ceilings
Open Concept with Two Private Offices, Two Private Baths & Kitchen
15 Openable Windows with Abundance of Natural Light
Direct Access to Parking

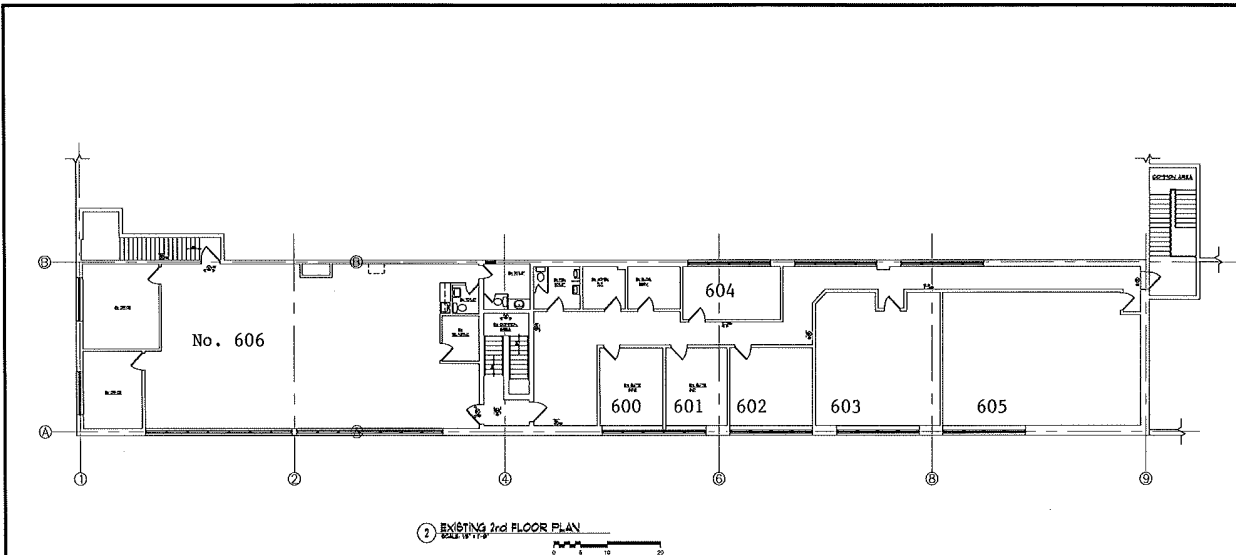


Select Properties
LTD.

Diana Chiulli, President • *Commercial Sales & Leasing*
344 Main Street, Suite 101 • Mount Kisco, NY 10549
914-666-9400
select1@optonline.net • diana.chiulli@icloud.com



Diana Chiulli, President • *Commercial Sales & Leasing*
344 Main Street, Suite 101 • Mount Kisco, NY 10549
914-666-9400
select1@optonline.net • diana.chiulli@icloud.com



ARCHITECTURE EXHIBIT PLANNING INTERIORS

ARCONICS
ARCHITECTURE, P.C.

545.5 WESTCHESTER AVENUE
RYE BROOK, NY 10573
914-937-5596

NEW ELEVATOR
185 KISCO AVE. MOUNT KISCO,
NEW YORK, 10549

DATE	ISSUE TO	PREPARED BY
01/17/2013	OWNER FOR RECORD	
02/27/2013	OWNER FOR RECORD	

NO.	DATE	REVISIONS	BY

NO.	DATE	REVISIONS	BY

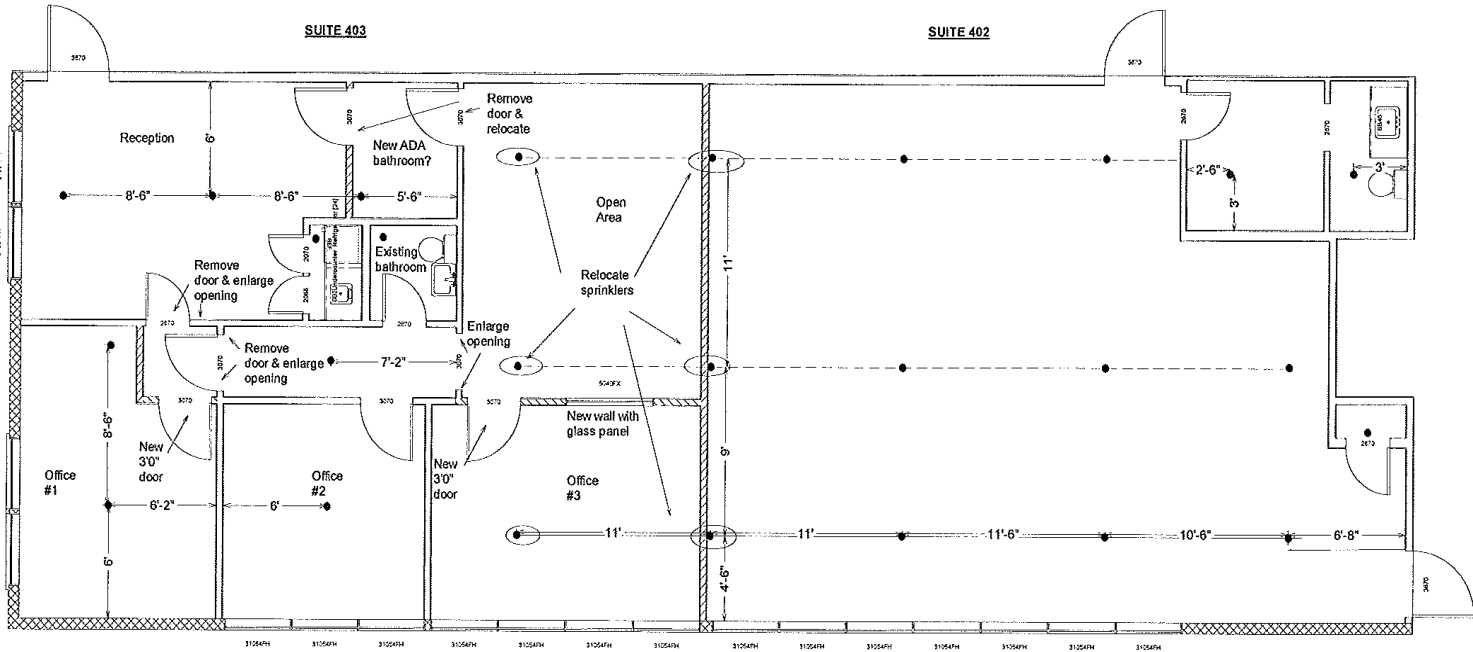
EXISTING SECOND FLOOR PLAN

PROJECT NO.: 22214
SCALE: NOT TO SCALE
DRAWN BY: SZ
CHECKED BY: GG
DATE: 11/08/12

EX-100



Diana Chiulli, President • *Commercial Sales & Leasing*
344 Main Street, Suite 101 • Mount Kisco, NY 10549
914-666-9400
select1@optonline.net • diana.chiulli@icloud.com



<p>SUITE's 402 & 403 NOT TO SCALE</p>	<p>KISCO AVENUE BUSINESS CENTER, L.L.C. 185 Kisco Avenue Mount Kisco, New York 10549</p>	<p>NOTES: Drawing 402.403.001 Sept 7, 2016</p>
--	---	--



Diana Chiulli, President • *Commercial Sales & Leasing*
 344 Main Street, Suite 101 • Mount Kisco, NY 10549
 914-666-9400
 select1@optonline.net • diana.chiulli@icloud.com

