



INFORMATIONAL PACKET



AN EXCLUSIVE,
LUXURY,
MEMBERS ONLY
MOTORSPORTS
PARK

Paul Cooley 972-422-9103 Ext. 1002
pcooley@patriarealtygroup.com



LUXURY PRIVATE GARAGES

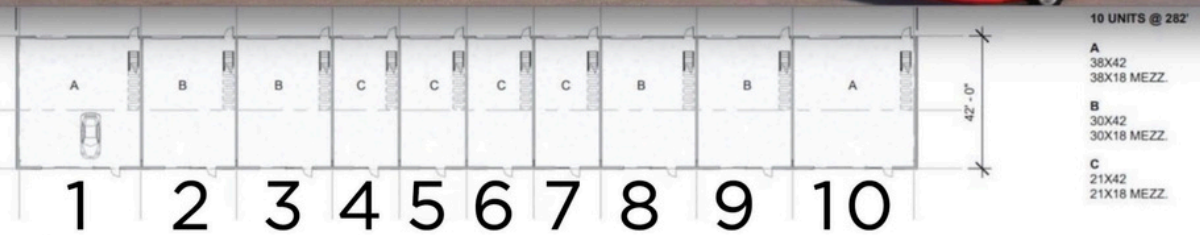
LUXURY GARAGE INFO:

RANGING FROM 1,260 TO 2,220 SQ. FT. THE UNITS FEATURE AN OPEN LAYOUT WITH OVER 20FT CEILINGS. EACH UNIT WILL BE FULLY FIRE, SPRINKLERED WITH WATER, SEWER, ELECTRIC AND HVAC UNITS TO KEEP THEM TIDY.

EACH UNIT HAS A 10' X 10' ELECTRIC GARAGE DOOR PLUS GLASS DOORS TO ACCESS THE OUTDOOR PATIO AND MEZZANINE LEVEL OUTDOOR BALCONY.

THESE UNITS WILL FEATURE 100-AMP SERVICE, PLUMBED FOR WATER AND SEWER, HIGH SPEED INTERNET CONNECTION ACCESS AND MOTORIZED OVERSIZED GARAGE DOORS. THE ENTIRE FACILITY WILL HAVE 24 HOURS SECURITY. THESE UNITS ARE BUILT TO LAST AND PROTECT YOUR ROLLING INVESTMENTS. OWNERS HAVE 24/7 ACCESS THROUGH A SECURE POWERED WROUGHT IRON GATE.

*FINANCING AVAILABLE



LEVEL 1 BUILDING 1,2&3 HAVE THE SAME LAYOUT UNLESS REQUESTED OTHERWISE.





LUXURY GARAGE PRICING TIERS



Small: 882 sf Floor + 378 sf Mezzanine • 1,260 sf Total
\$495,000

Medium: 1,260 sf Floor + 540 sf Mezzanine • 1,800 sf Total
\$695,000

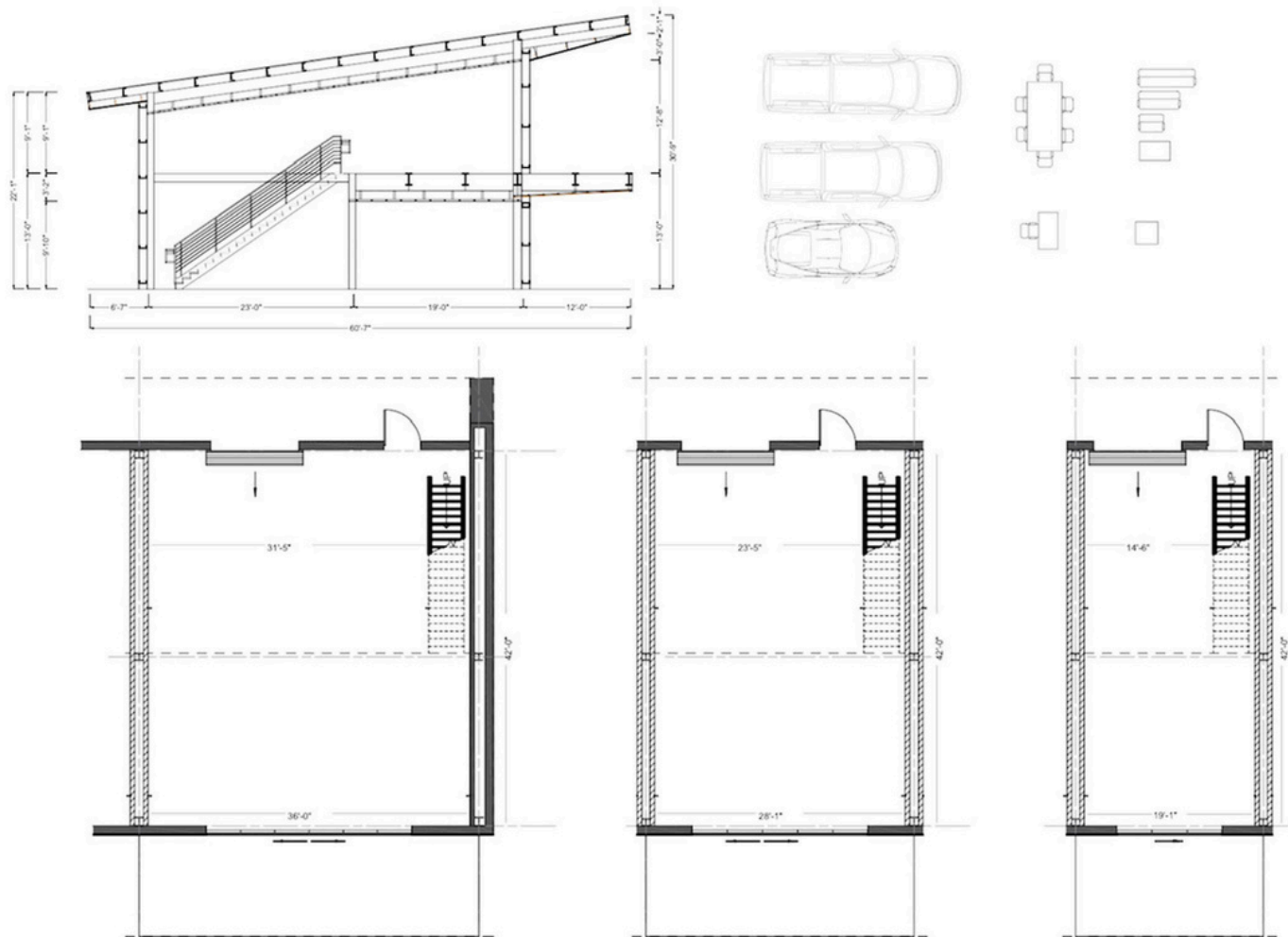
Large: 1,536 sf Floor + 684 sf Mezzanine • 2,220 sf Total
\$795,000

****VIP membership included with garage purchase**

Paul Cooley 972-422-9103 Ext. 1002
pcooley@patriarealtygroup.com



LUXURY GARAGE LAYOUTS

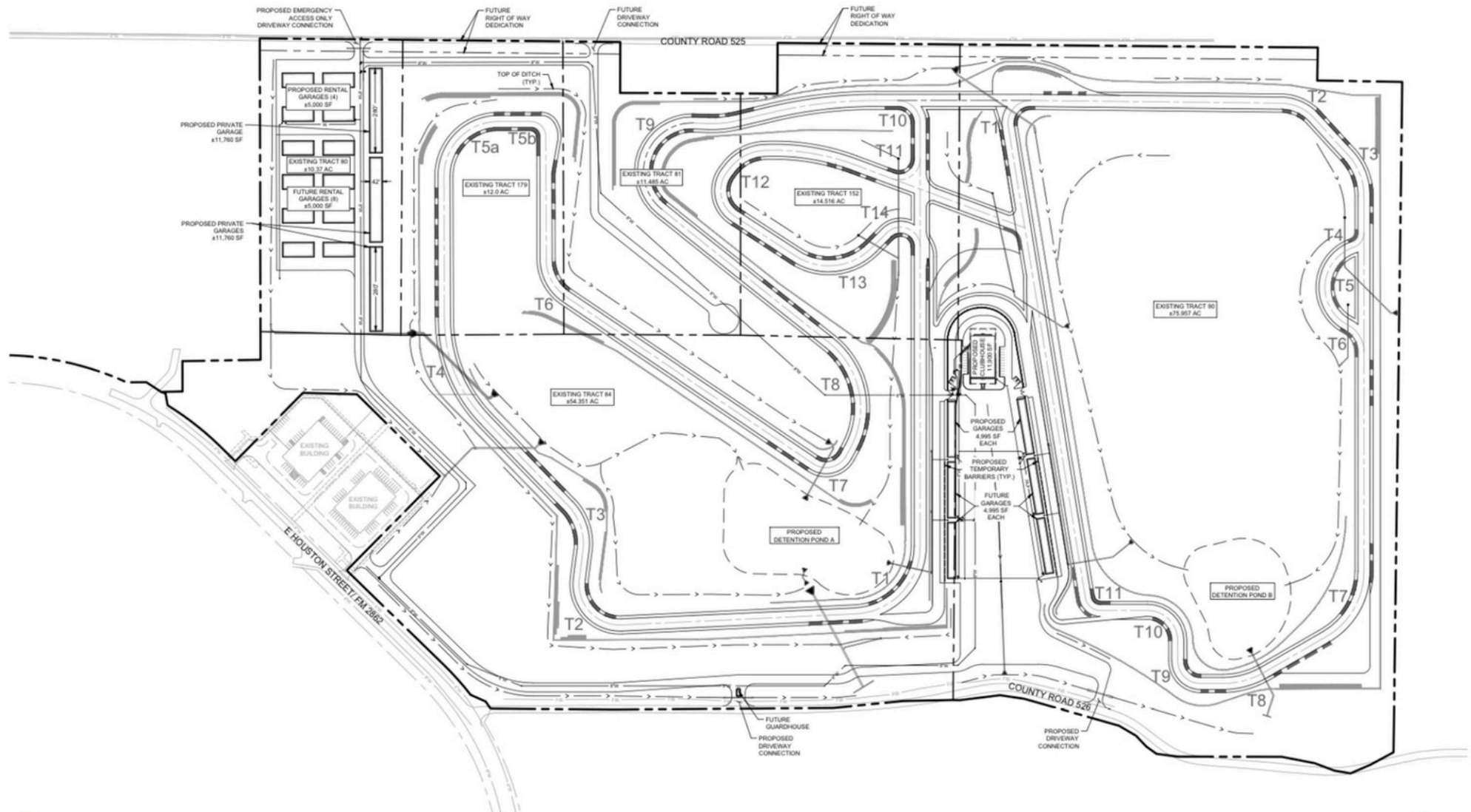


****VIP membership included with garage purchase**

Paul Cooley 972-422-9103 Ext. 1002
pcooley@patriarealtygroup.com



SITE PLAN EXHIBIT



****VIP membership included with garage purchase**

Paul Cooley 972-422-9103 Ext. 1002

pcooley@patriarealtygroup.com



MONTHLY GARAGE RENTAL



MONTHLY RENTAL GARAGES AVAILABLE FOR MEMBERS WHO
DECIDE NOT TO GET A GARAGE CONDO • BUY YOUR MEMBERSHIP
AND HAVE A PERFECT PLACE TO STORE YOUR CAR!!

Paul Cooley 972-422-9103 Ext. 1002
pcooley@patriarealtygroup.com



MEMBERSHIP LEVELS

TAKE ADVANTAGE OF THESE MEMBERSHIP LEVELS BEFORE THEY'RE NO LONGER AVAILABLE.

FLASH!!!

0% FINANCING
ON GOLD MEMBERSHIPS
LIMITED TIME ONLY!

	GOLD	V.I.P.	CORPORATE
Initiation Fee	\$55,000	\$100,000	\$250,000
Annual Dues	\$7,200	\$6,000	\$28,000
Transferrable	No	Yes	No
Right to Purchase Garage	Subject to Availability	Yes	No
Family/Corporate Access	Immediate Family Only	Immediate Family Only	3 Employees
Guest Access	2 Per Month (With Fee)	3 Per Month (With Fee)	2 Per Month (With Fee)
Unlimited Track Days	Yes (During Member Days) (With Fee)	Yes (During Member Days) (With Fee)	Yes (During Member Days) (With Fee)
V.I.P. Track Time	No	Yes	No
Annual Track Access Days	80	200	200+
Instruction	Full Price	25% Discount	Full Price
Discount Track Car Rental	Yes	Yes	No
Discount at Pro Shop	10% Discount	15% Discount	15% Discount

GOLD MEMBERSHIPS CAN BE FINANCED! WE OFFER 0% FINANCING!

****VIP membership included with garage purchase**

Paul Cooley 972-422-9103 Ext. 1002
pcooley@patriarealtygroup.com



PLATINUM MEMBERSHIP

PLATINUM CORP. MEMBERSHIP

- **\$500,000 one-time initiation fee.**
- **5 designated corporate employee members**
- **5 quests per month with track fee**
- **1 private track day included each year**
- **1st year no charge**
- **Future years discounted track fee only**
- **Full catering available**
- **Annual dues \$50,000**
- **Non-transferable**
- **1 event center use for corporate event included**
- **Priority private track rental for corporate events with clients 50% discount**
- **Priority "track car" rental for corporate functions or quests**
- **Conference room available for corporate meetings**
- **Classroom and on track Motorsport/racing instruction.**
- **2 large 4'x8' sign space to acknowledge the company**
- **Garage condo purchase allowed**
- **Driver coaching and instruction available**





MOTORSPORTS PARK HIGHLIGHTS



Paul Cooley 972-422-9103 Ext. 1002
pcooley@patriarealtygroup.com