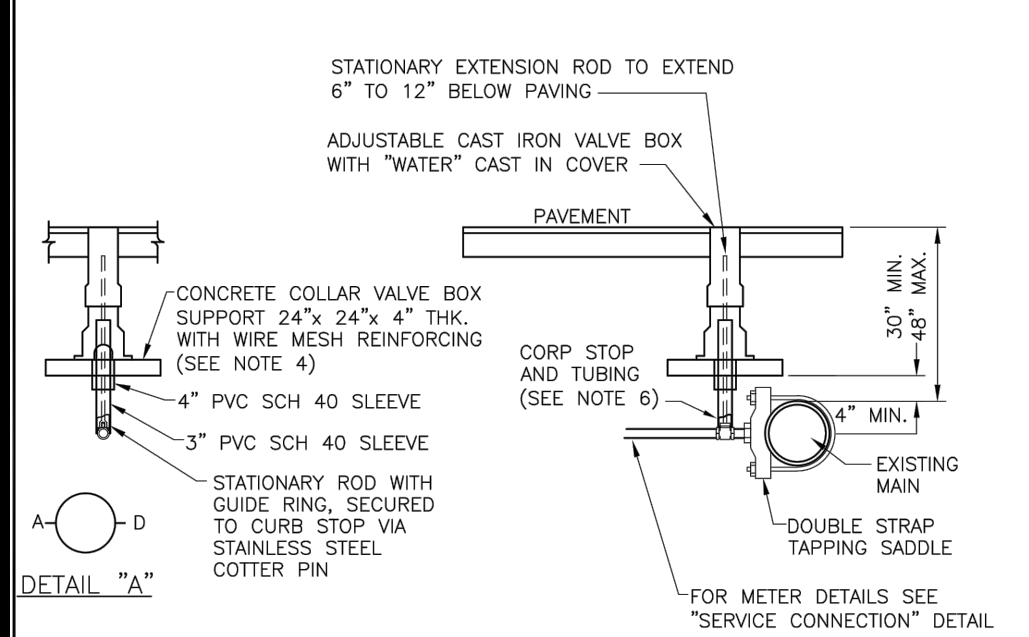

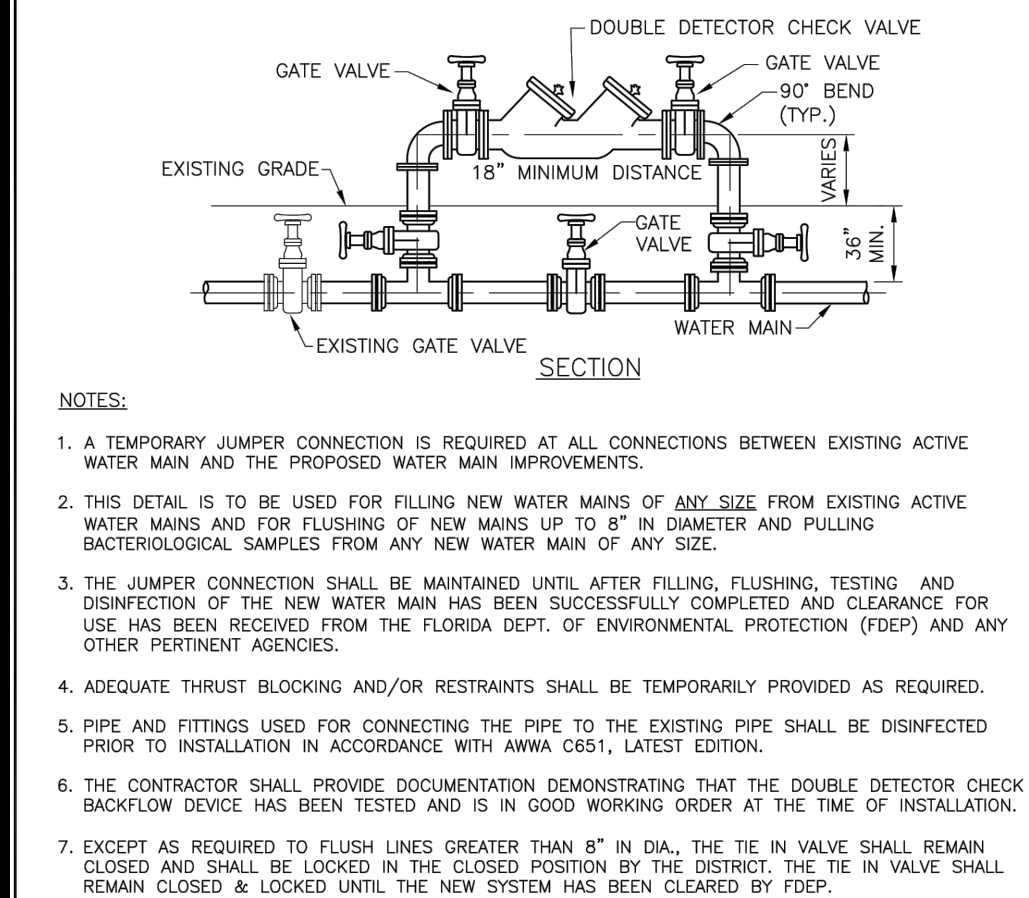
	ST. LUCIE COUNTY WATER & WASTEWATER CONSTRUCTION STANDARDS	TRACE WIRE DETAIL
DATE APPROVED: DECEMBER 2015		DRAWING NUMBER: G-13



- NOTES: (PLEASE REFER TO WRITTEN SPECIFICATIONS FOR ADDITIONAL REQUIREMENTS)
- SUCCESSIVE TAPS INTO THE WATER MAIN SHALL BE SPACED A MINIMUM OF 18" OFFSET AND AT 90° FROM THE CENTERLINE AS SHOWN ON DETAIL "A".
 - SERVICE LINES SHALL BE CONTINUOUS FROM CURB STOP TO ANGLE METER STOP WITH NO FITTINGS IN BETWEEN.
 - CORPORATION STOP AT THE MAIN TO HAVE MALE AWWA THREADS ON ONE SIDE AND BE COMPRESSION ON THE OTHER SIDE.
 - CONCRETE COLLAR VALVE BOX SUPPORT TO BE PLACED ON COMPACTED SOIL TO SUPPORT VALVE BOX SO THAT A MINIMUM OF 4 INCHES EXISTS BETWEEN THE BOTTOM OF THE CONCRETE COLLAR AND THE TOP OF THE WATER MAIN.
 - SERVICE TAPS UNDER PAVEMENT WILL NOT BE ALLOWED ON NEW WATER MAINS.

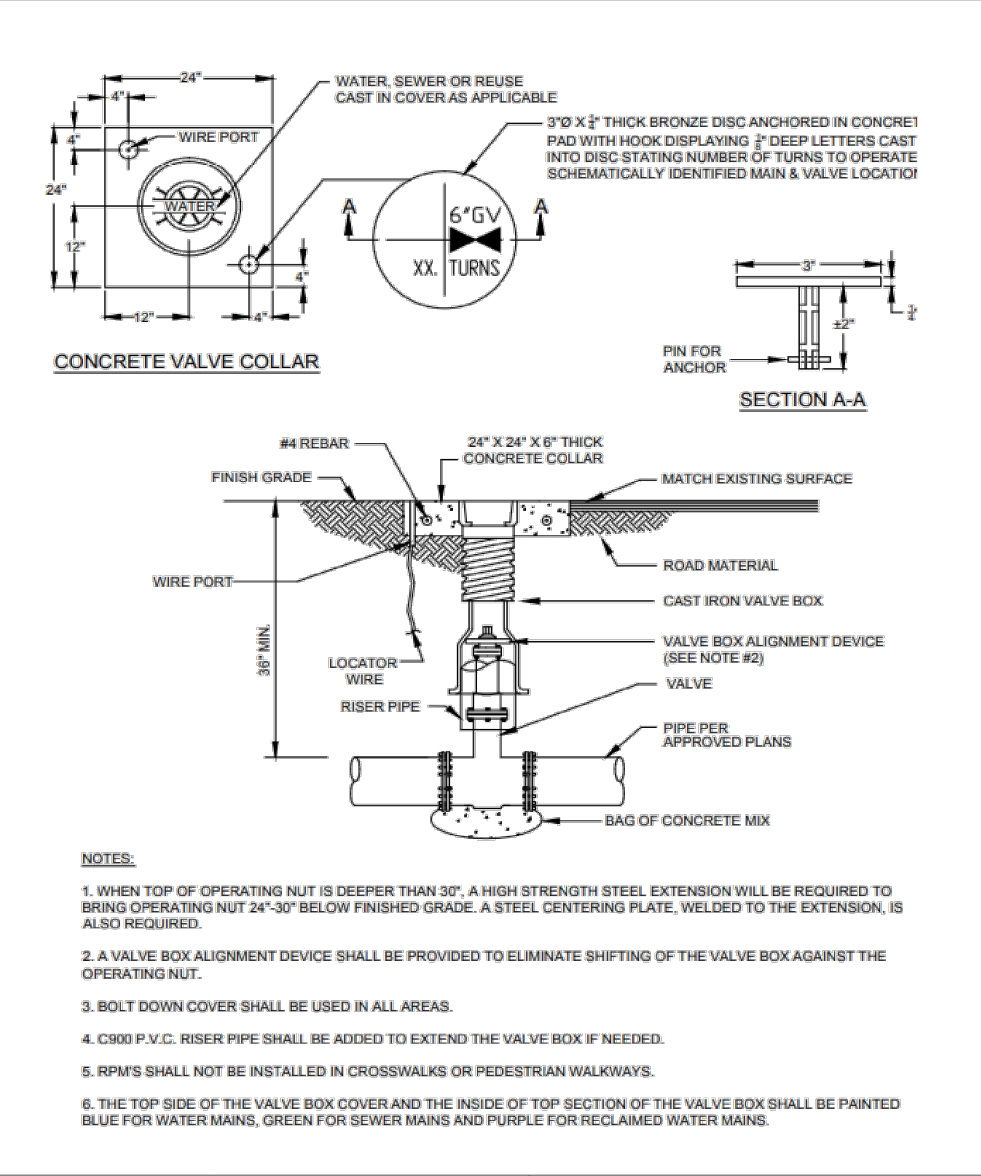
	ST. LUCIE COUNTY WATER & WASTEWATER CONSTRUCTION STANDARDS	WATER SERVICE TAP UNDER PAVEMENT
DATE APPROVED: DECEMBER 2015		DRAWING NUMBER: W-10

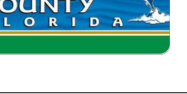


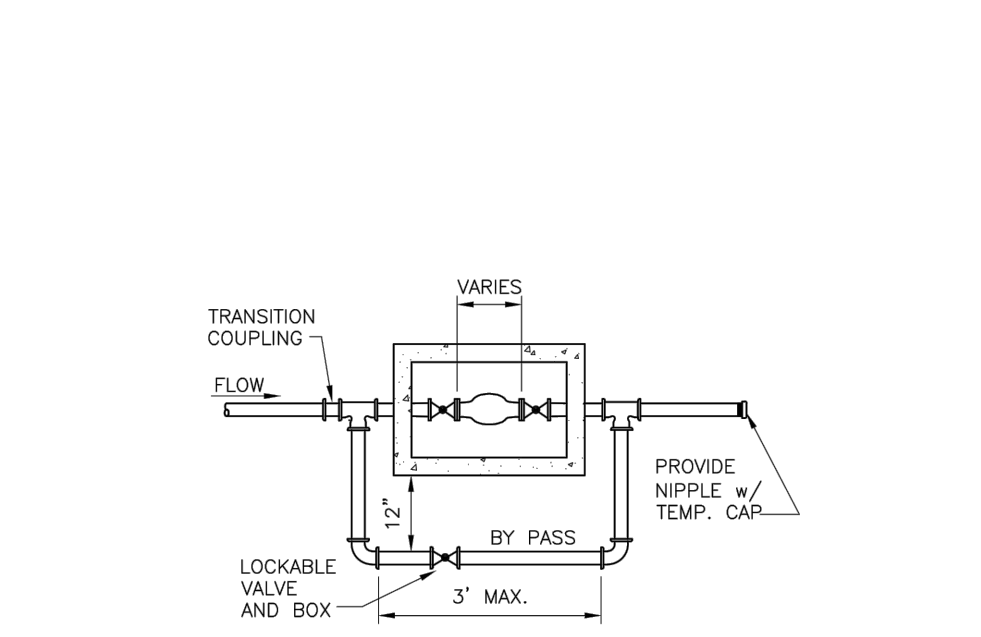
TEMPORARY JUMPER SCHEDULE	
MAIN SIZE	MINIMUM JUMPER SIZE
4"	4"
6"	4"
8" or LARGER	6"

- NOTES: *1. WITH THE USE OF A 2" JUMPER, A CORP STOP WITH SERVICE SADDLE MAY BE UTILIZED IN LIEU OF A TEE AND VALVE AT MAIN CONNECTION. (SEE DRAWING NO. W-18)


	ST. LUCIE COUNTY WATER & WASTEWATER CONSTRUCTION STANDARDS	TEMPORARY JUMPER DETAIL & SCHEDULE
DATE APPROVED: DECEMBER 2015		DRAWING NUMBER: W-18

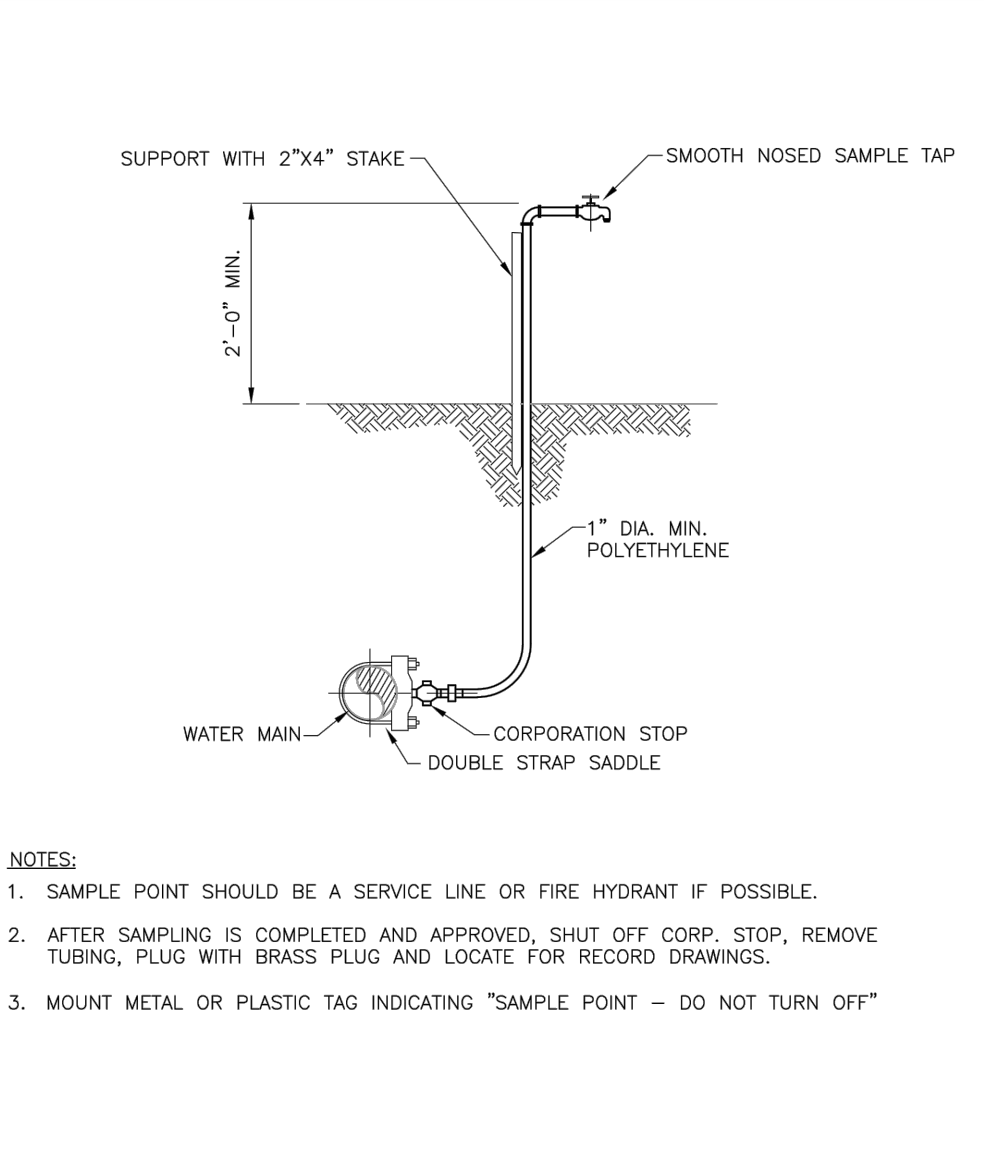



	ST. LUCIE COUNTY WATER & WASTEWATER CONSTRUCTION STANDARDS	TYPICAL VALVE BOX AND COLLAR
DATE APPROVED: DECEMBER 2015		DRAWING NUMBER: G-19

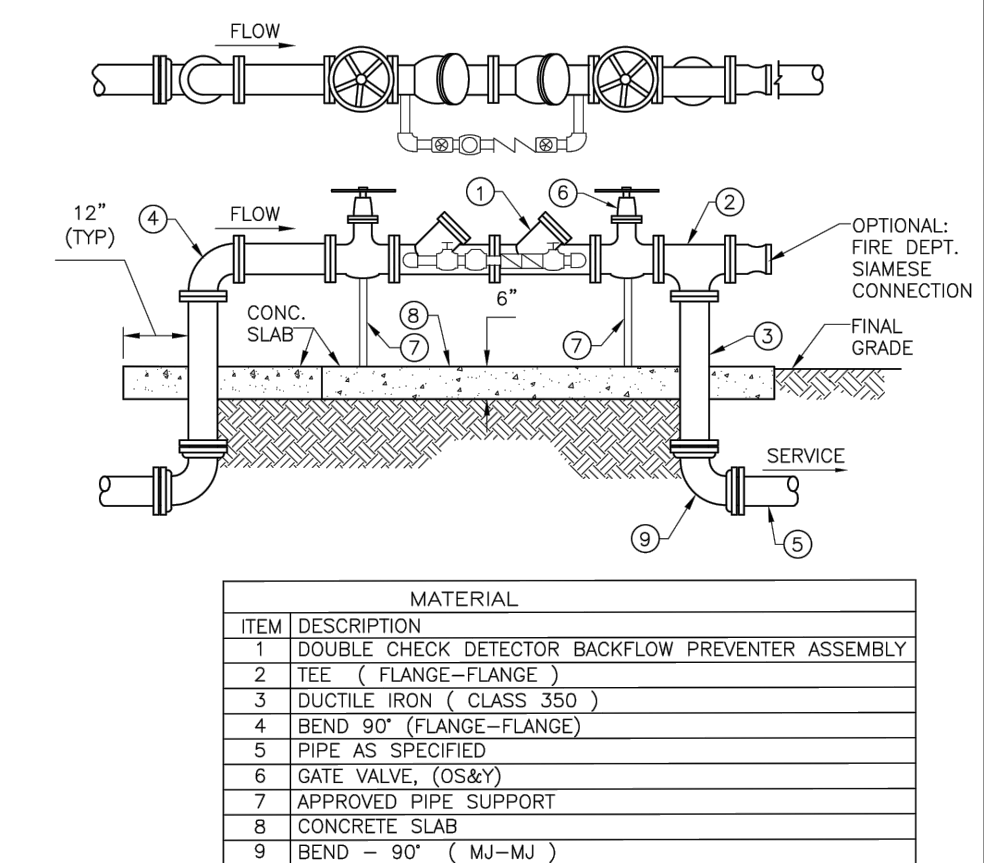


- NOTES:
- ALL VALVES TO BE STRAIGHT BALL VALVES WITH LOCK-WING. (FLANGE AT METER) FORD OR APPROVED EQUAL.
 - SEE TYPICAL SERVICE DETAIL FOR MAIN CONNECTION.
 - METER BOX SHALL BE POLYMER CONCRETE AND FIBER REINFORCED POLYESTER.
 - METER SHALL BE FURNISHED BY DEVELOPER AND DELIVERED TO THE DISTRICT'S WAREHOUSE FOR STORAGE AND SUBSEQUENT INSTALLATION BY THE DISTRICT.


	ST. LUCIE COUNTY WATER & WASTEWATER CONSTRUCTION STANDARDS	2" METER DETAIL
DATE APPROVED: DECEMBER 2015		DRAWING NUMBER: W-12

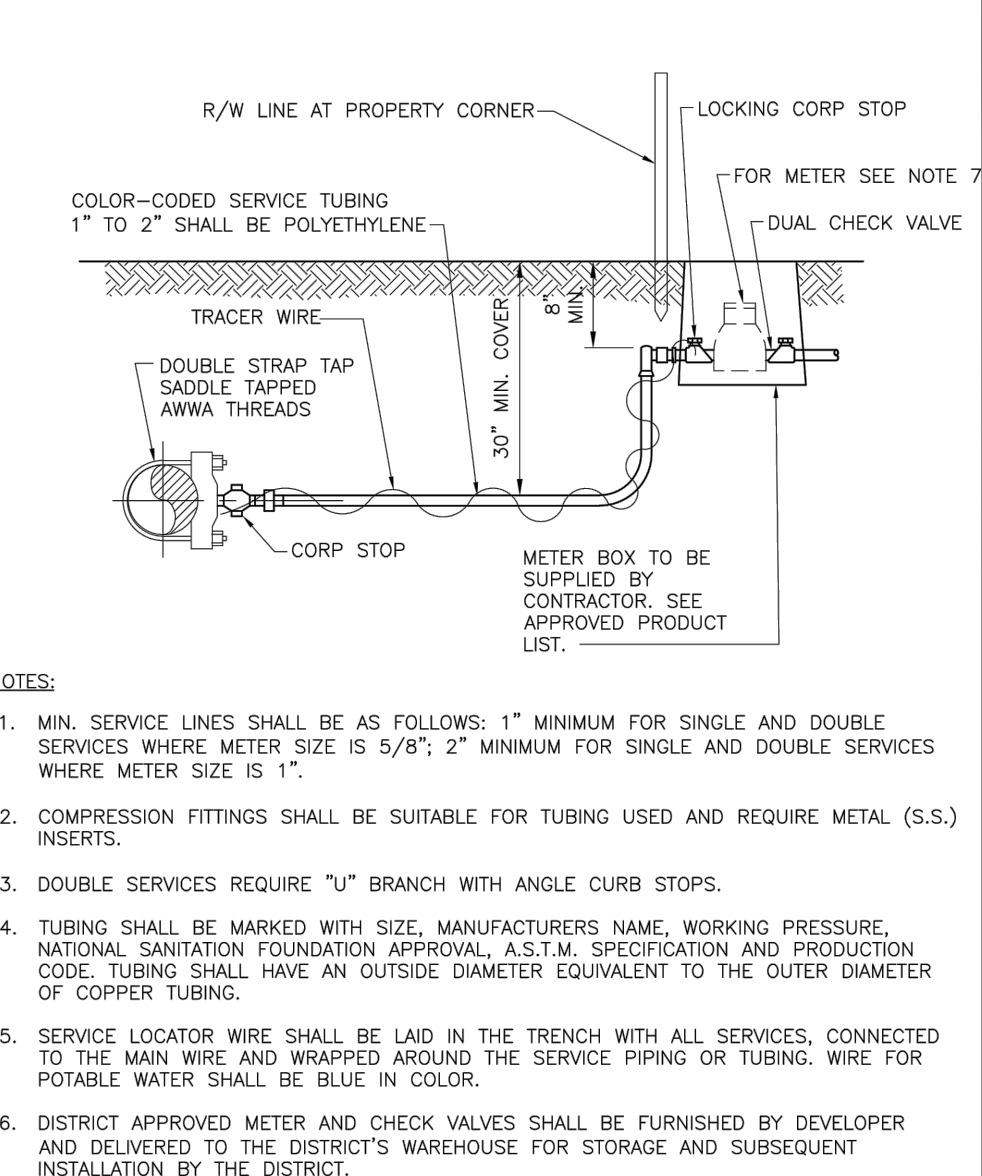



	ST. LUCIE COUNTY WATER & WASTEWATER CONSTRUCTION STANDARDS	TEMPORARY SAMPLE POINT DETAIL (IN-LINE)
DATE APPROVED: DECEMBER 2015		DRAWING NUMBER: W-1

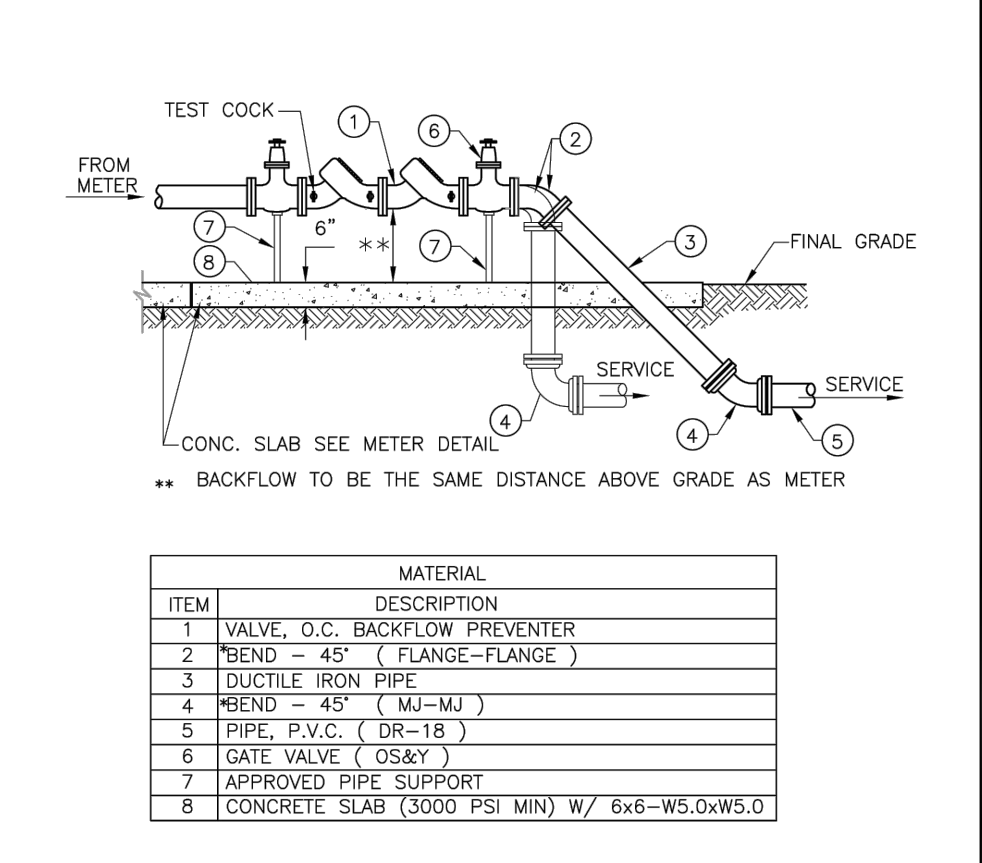


- NOTES:
- FIELD ADJUST AND CUT ITEM 3 TO PROPER LENGTH. THIS TYPE OF CONSTRUCTION IS DESIGNED FOR LIMITED WORKING AREA.
 - ALL EXPOSED DUCTILE IRON PIPES AND FITTINGS SHALL BE PAINTED "RED" AS SPECIFIED. PAINT SPECIFICATIONS MUST BE SUBMITTED TO ST. LUCIE COUNTY UTILITIES PRIOR TO APPLICATION.
 - DETECTOR METER SHALL READ IN GALLONS AND SHALL BE 5/8" NEPTUNE MAGNETIC DRIVE, MODEL T-10, OR AS APPROVED BY THE DISTRICT.


	ST. LUCIE COUNTY WATER & WASTEWATER CONSTRUCTION STANDARDS	FIRE LINE DOUBLE DETECTOR CHECK VALVE
DATE APPROVED: DECEMBER 2015		DRAWING NUMBER: W-14

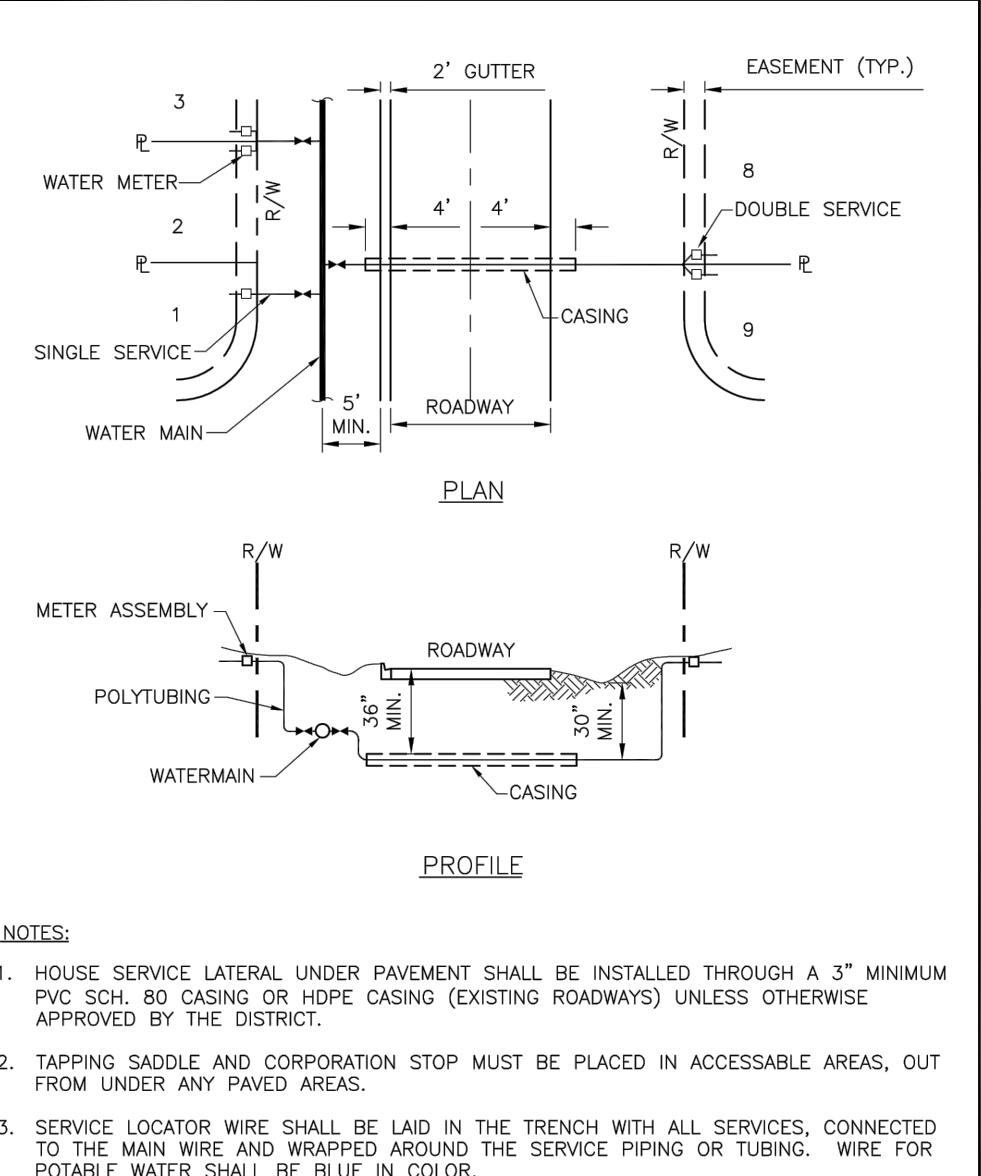



	ST. LUCIE COUNTY WATER & WASTEWATER CONSTRUCTION STANDARDS	SERVICE CONNECTION DETAIL 5/8" OR 1" METER
DATE APPROVED: DECEMBER 2015		DRAWING NUMBER: W-7

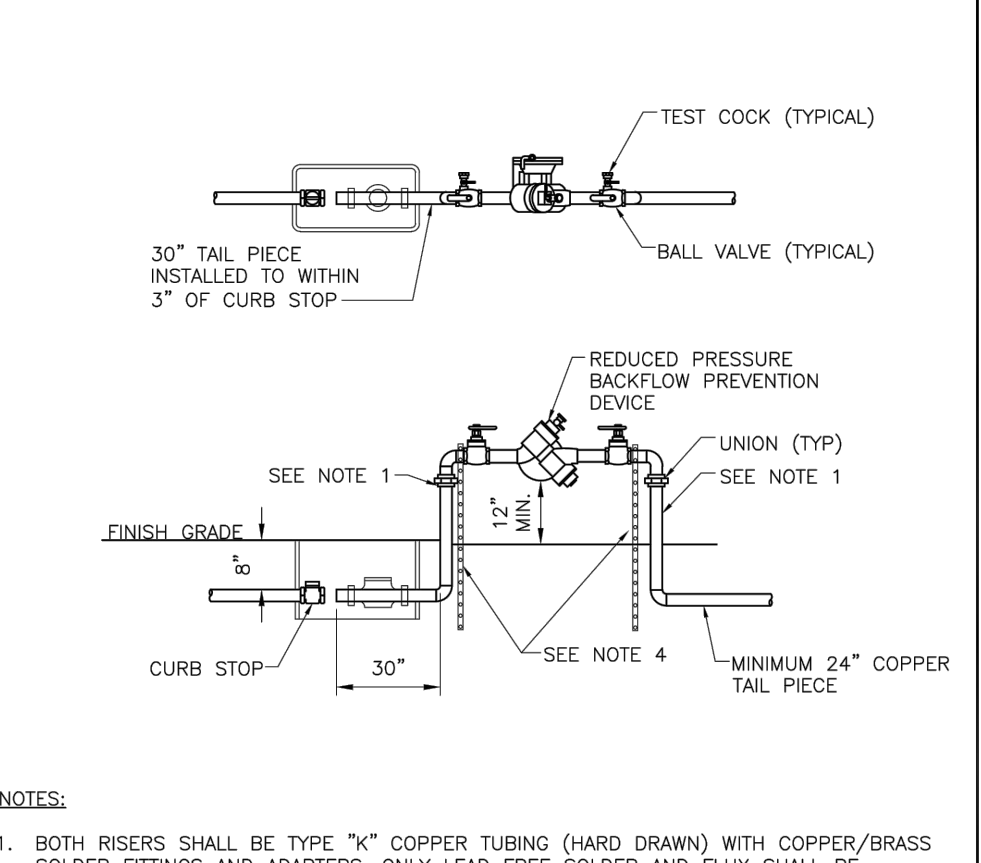


- NOTES:
- FIELD ADJUST AND CUT ITEM 3 TO PROPER LENGTH. THIS TYPE OF CONSTRUCTION IS DESIGNED FOR LIMITED WORKING AREA.
 - ALL EXPOSED DUCTILE IRON PIPES AND FITTINGS SHALL BE PAINTED "BLUE" AS SPECIFIED. PAINT SPECIFICATIONS MUST BE SUBMITTED TO THE DISTRICT PRIOR TO APPLICATION.


	ST. LUCIE COUNTY WATER & WASTEWATER CONSTRUCTION STANDARDS	BACKFLOW PREVENTER SINGLE SERVICE 4", 6", & 8"
DATE APPROVED: DECEMBER 2015		DRAWING NUMBER: W-15



	ST. LUCIE COUNTY WATER & WASTEWATER CONSTRUCTION STANDARDS	WATER SERVICE CONNECTIONS PLAN / PROFILE
DATE APPROVED: DECEMBER 2015		DRAWING NUMBER: W-8



- NOTES:
- BOTH RISERS SHALL BE TYPE "K" COPPER TUBING (HARD DRAWN) WITH COPPER/BRASS SOLDER FITTINGS AND ADAPTERS. ONLY LEAD FREE SOLDER AND FLUX SHALL BE PERMITTED.
 - BACKFLOW PREVENTION DEVICES SHALL BE USC APPROVED WITH SILICONE RUBBER SEAL RINGS OR O-RINGS.
 - BACKFLOW PREVENTION DEVICE SHALL BE SUPPORTED AT BOTH RISERS WITH STAINLESS STEEL UNISTRUT. RISERS TO BE SECURED TO UNISTRUT WITH 304 STAINLESS STEEL MOUNTING HARDWARE AND 1/2" NEOPRENE INSULATORS BETWEEN ALL DISSIMILAR METALS.
 - BACKFLOW DEVICES SHALL BE A MINIMUM OF 3' FROM BACK OF CURB AND SIDEWALKS.

	ST. LUCIE COUNTY WATER & WASTEWATER CONSTRUCTION STANDARDS	PRIVATE BACKFLOW DEVICE
DATE APPROVED: DECEMBER 2015		DRAWING NUMBER: W-16