

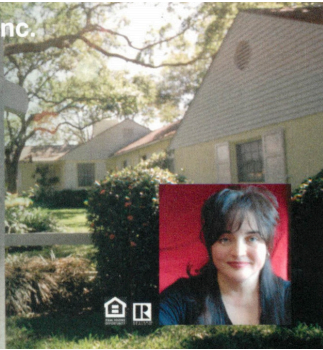
\$725,000

60445 W Summit Road
Ashland, Wisconsin

Adolphson Real Estate, Inc.
AdolphsonRealEstate.com

Rachel Betts Larson
Licensed Realtor®

4815 West Arrowhead Road
Suite 240
Duluth, MN 55811
Cell: 218-591-9652
Office: 218-722-8736
Fax: 218-722-8807
rachellarson239@gmail.com



Do not miss this rare chance to own a one-of-a-kind property just minutes from Lake Superior and the vibrant town of Ashland, Wisconsin. Set on ten beautiful acres, this unique estate offers endless potential for personal use or business ventures. The updated home blends modern comfort with timeless charm.

It is perfect as a residence, vacation home, or guest lodging. A large rustic and chic barn has been transformed into an event venue ideal for weddings and gatherings, complete with a commercial kitchen and licensed bar. A nearby smaller barn serves as a private bridal parlour. Additional features include guest accommodations, a machine shed, two RV hookups, and a charming chicken coop. Every detail has been designed to enhance comfort and functionality. Whether you want to run an event business, create a retreat, or simply enjoy peaceful living, this is more than a property. It is a lifestyle and a rare opportunity in Northern Wisconsin.



Adolphson Real Estate, Inc.

