

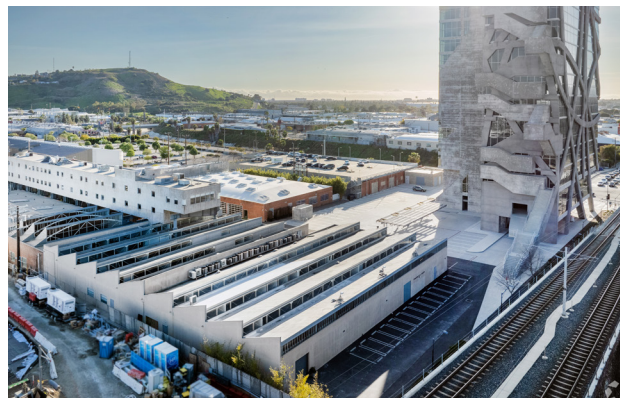
SAMITAUR

5760-5780 W Jefferson Blvd

INSPIRATION AROUND EVERY CORNER

The Samitaur Building is a three-story creative hub crafted for visionary thinkers. Situated in the heart of the Hayden Tract community, this striking property seamlessly blends innovative design with functional features to inspire big ideas. Featuring soaring ceilings, concrete floors, exposed wood beams and glass offices, the building offers a versatile and dynamic environment.

Perfectly positioned next to the Expo Light Rail station and just steps from Whole Foods and premier dining and retail options, Samitaur Building combines architectural brilliance with unparalleled convenience.



AVAILABLE NOW:
9,712 RSF - 16,418 RSF

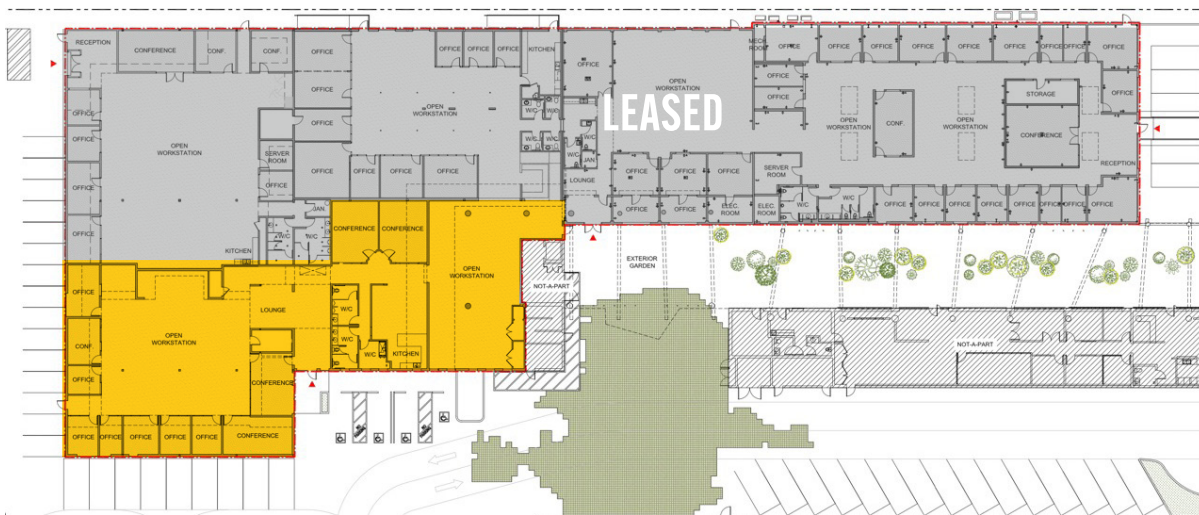


DESIGNED FOR THE BOLD

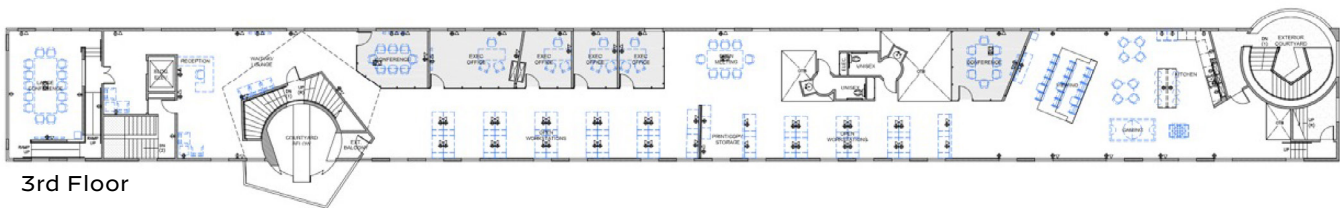
With open floorplans, towering ceilings, and sleek glass offices, the Samitaur Building is bathed in natural light, delivering an energizing and functional workspace.

AVAILABLE NOW: 9,712 RSF - 16,418 RSF

GROUND FLOOR | 9,712 RSF



16,418 RSF | 2ND AND 3RD



3rd Floor



2nd Floor



Ground Floor Private
Lobby Entrance to Elevator

THE FOREFRONT OF LA'S CREATIVE SCENE

Samitaur Building empowers you to thrive in the creative epicenter of Westside LA, surrounded by industry leaders like Amazon, UCLA, and Apple. This dynamic location offers a hub of inspiration, providing endless opportunities to connect and collaborate with top minds in tech, media, and entertainment.



BALLONA CREEK BIKE PATH

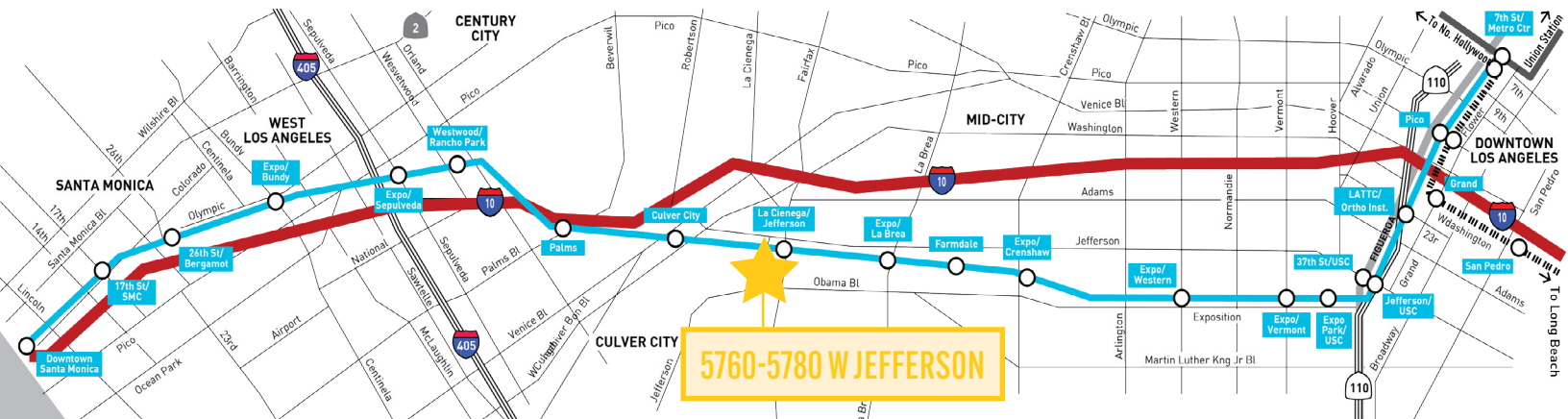
METRO EXPO LINE

PARKING RATIO: 3:1,000 RSF (W/VALET)

\$175 UNRESERVED

YOUR LINK TO THE CITY

With easy access to I-405 and I-10, the Samitaur Building puts you minutes from West Los Angeles, Santa Monica, and Century City, streamlining your daily commute. The nearby Ballona Creek Bike Path, a favorite among walkers, runners, and bikers, offers a scenic route straight to Santa Monica Bay, connecting you to the best of the Westside.



For More Information, Please Contact:

GABRIEL BROWN

+1 310 435 4344
gabe.brown@jll.com
CA Lic. 01441920

JOSH BERNSTEIN

+1 310 795 5947
josh.bernstein@cushwake.com
CA Lic. 01828093

ALEXA DELAHOKE

+1 626 340 5391
alexa.delahooke@cushwake.com
CA Lic. 02091695

©2025 Cushman & Wakefield. All rights reserved. The information contained in this communication is strictly confidential. This information has been obtained from sources believed to be reliable but has not been verified. NO WARRANTY OR REPRESENTATION, EXPRESS OR IMPLIED, IS MADE AS TO THE CONDITION OF THE PROPERTY (OR PROPERTIES) REFERENCED HEREIN OR AS TO THE ACCURACY OR COMPLETENESS OF THE INFORMATION CONTAINED HEREIN, AND SAME IS SUBMITTED SUBJECT TO ERRORS, OMISSIONS, CHANGE OF PRICE, RENTAL OR OTHER CONDITIONS, WITHDRAWAL WITHOUT NOTICE, AND TO ANY SPECIAL LISTING CONDITIONS IMPOSED BY THE PROPERTY OWNER(S). ANY PROJECTIONS, OPINIONS OR ESTIMATES ARE SUBJECT TO UNCERTAINTY AND DO NOT SIGNIFY CURRENT OR FUTURE PROPERTY PERFORMANCE. COE-PM-West-07.8.2025

