

**2460 GEORGE WASHINGTON MEMORIAL HWY**  
HAYES, VA 23072

**FOR LEASE  
& SALE**




## LOCATION DESCRIPTION

Freestanding building located at the signalized intersection of George Washington Memorial Highway and Lafayette Heights Drive in Hayes, Virginia

## PROPERTY HIGHLIGHTS

- 13,813 SF building available for lease and 2.7 acres available for sale
- Opportunity for potential redevelopment
- Ideal location for bank branch, restaurant, convenience store, and many other retail uses
- Half mile from the Coleman Bridge and close to York County and Newport News
- Traffic Count (ADT): George Washington Memorial Highway - 33,000



 DEMOGRAPHICS	1 MILE	3 MILES	5 MILES
Population	2,278	11,896	19,196
Households	1,060	4,984	7,634
Average HH Income	\$77,749	\$95,380	\$98,856
Median HH Income	\$62,618	\$70,511	\$75,444



**DEBRA RAMEY**

debra.ramey@tscg.com  
757.586.4102

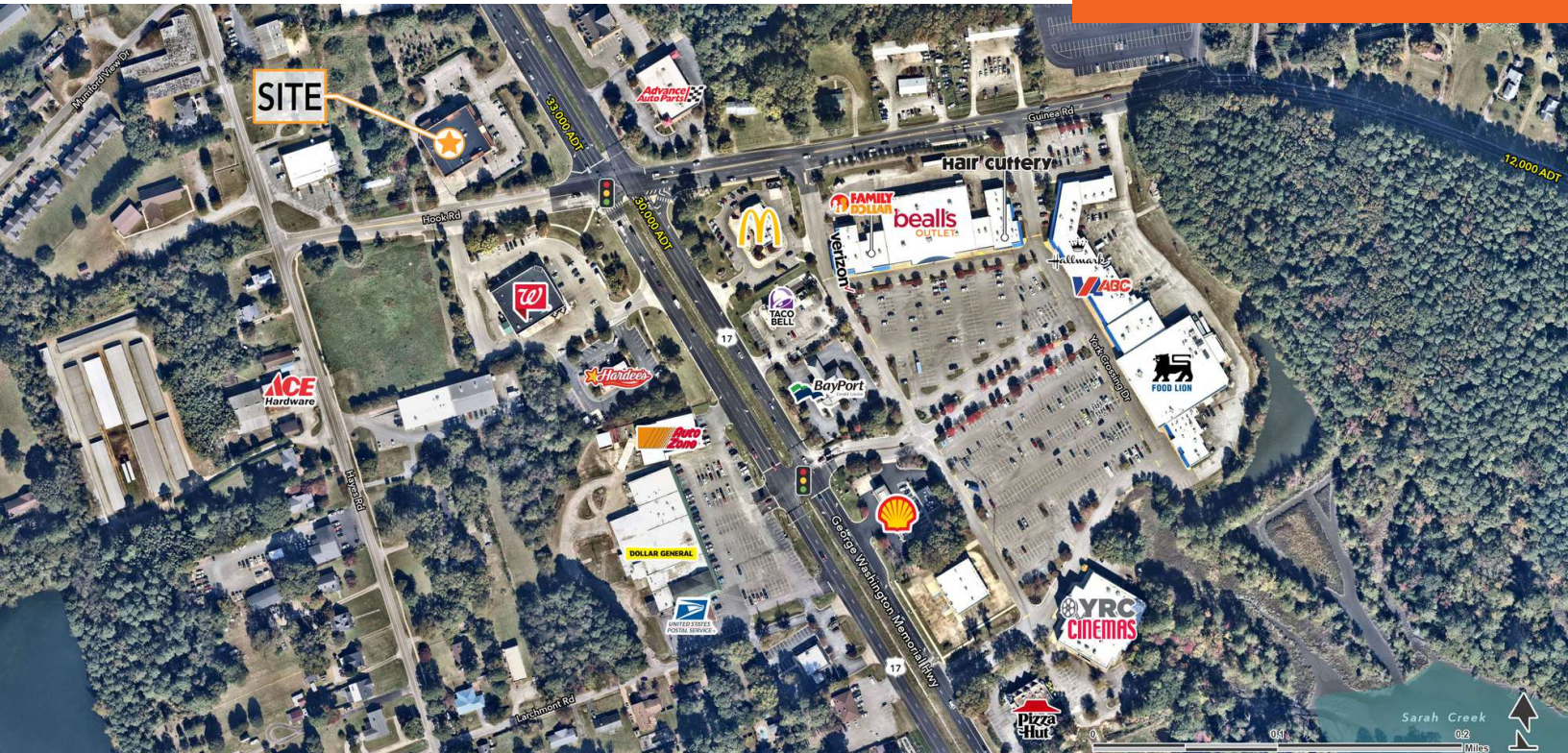
**KAREN MIKULSKI**

karen.mikulski@tscg.com  
757.586.4104

REALTY  INCOME

**2460 GEORGE WASHINGTON MEMORIAL HWY**  
HAYES, VA 23072

**FOR SALE  
& LEASE**



**DEBRA RAMEY**  
debra.ramey@tscg.com  
757.586.4102

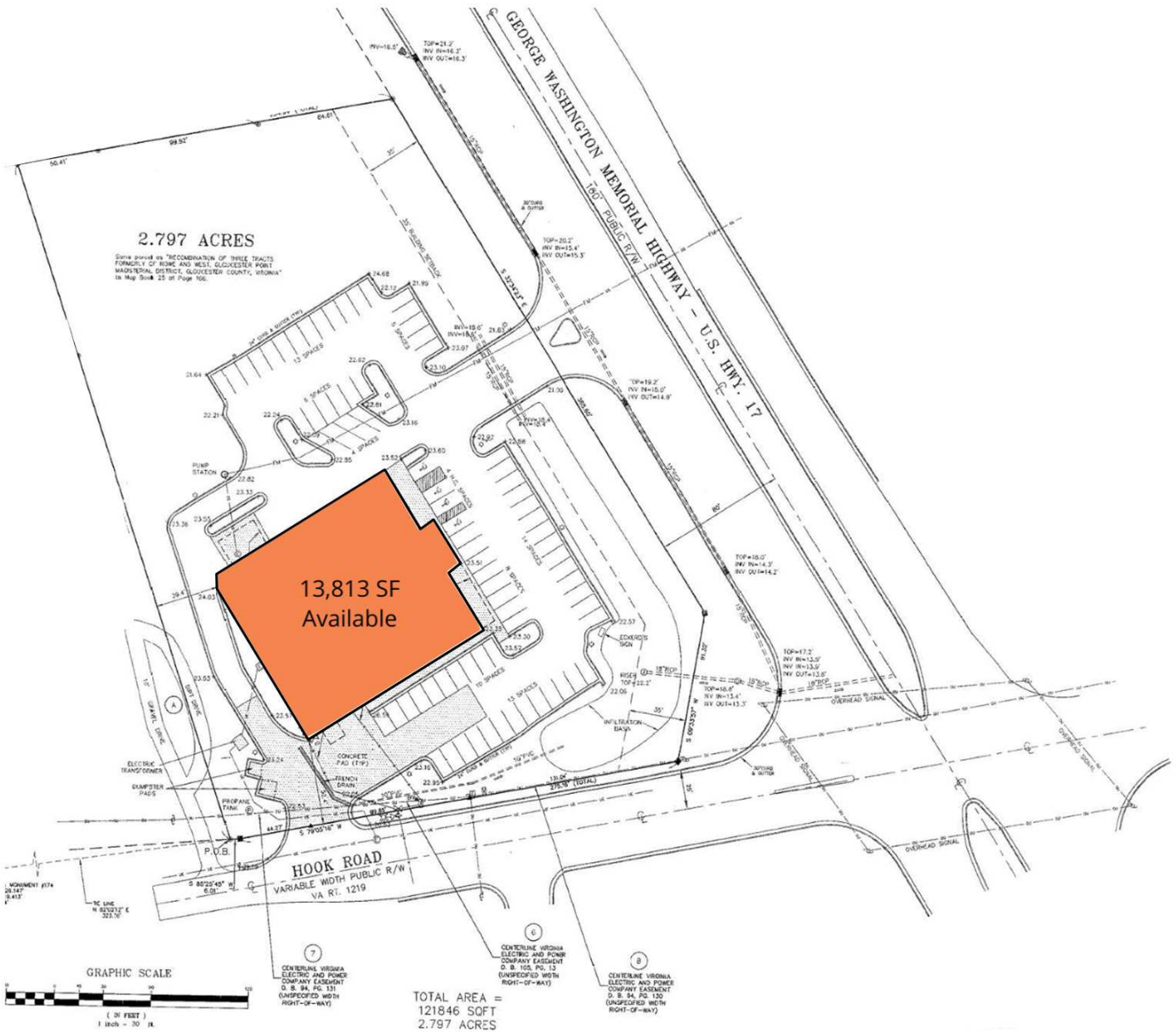
**KAREN MIKULSKI**  
karen.mikulski@tscg.com  
757.586.4104

REALTY  INCOME

# 2460 GEORGE WASHINGTON MEMORIAL HWY

HAYES, VA 23072

# FOR LEASE & SALE



**DEBRA RAMEY**  
debra.ramey@tscg.com  
757.586.4102

**KAREN MIKULSKI**  
karen.mikulski@tscg.com  
757.586.4104

REALTY  INCOME