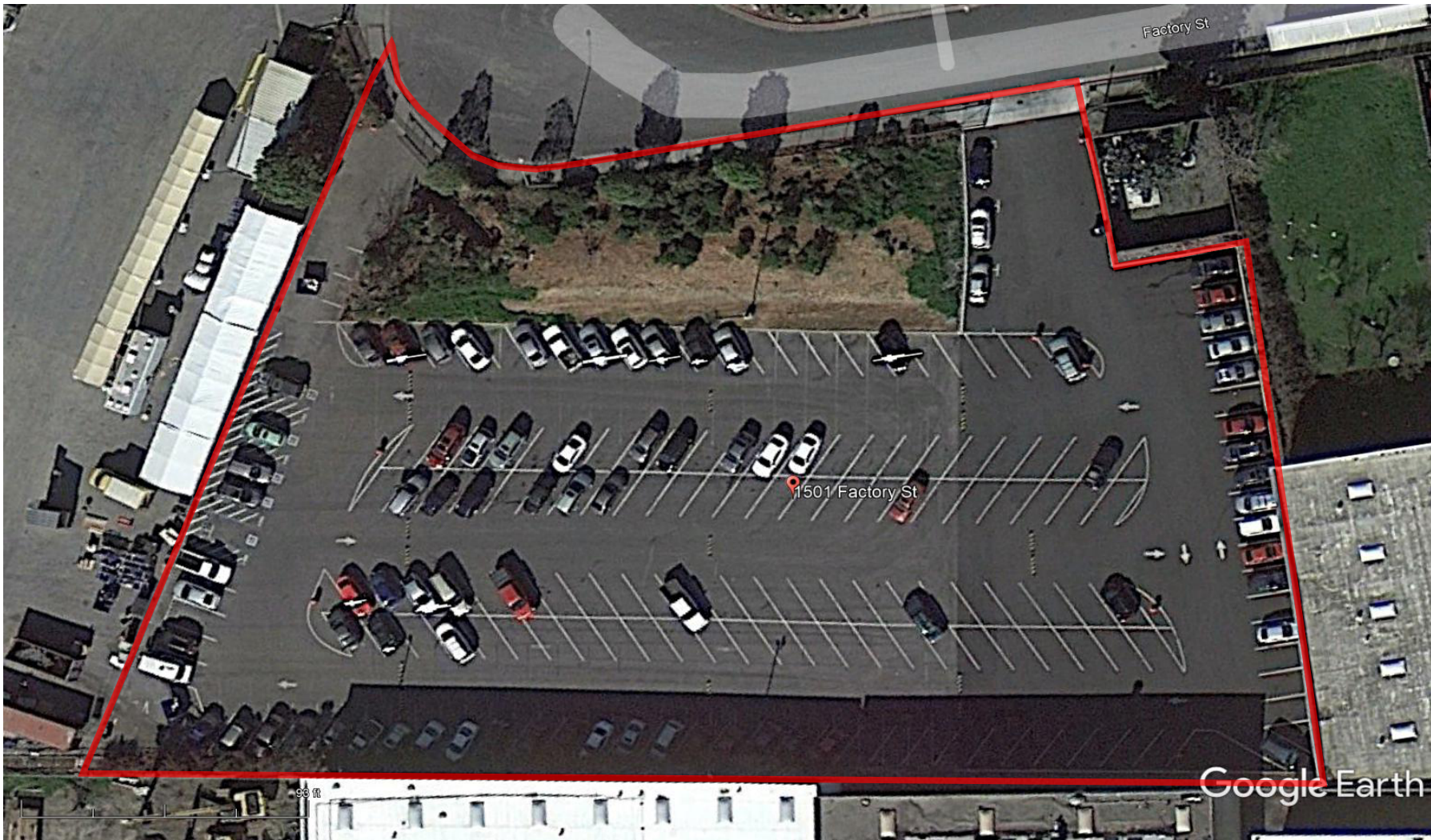


# YARD/PARKING

70,000 SF

1501 Factory Street  
Richmond, CA



Paved, Lighted and Secured; Quiet cul-de-sac location  
\$0.35/sf/month Industrial Gross (\$24,500/mo)

JONES DEVELOPMENT COMPANY  
Call Randy Jones

Ok for Trailer, Car and Fleet Parking / Yard Uses Approved  
Available January 1, 2023

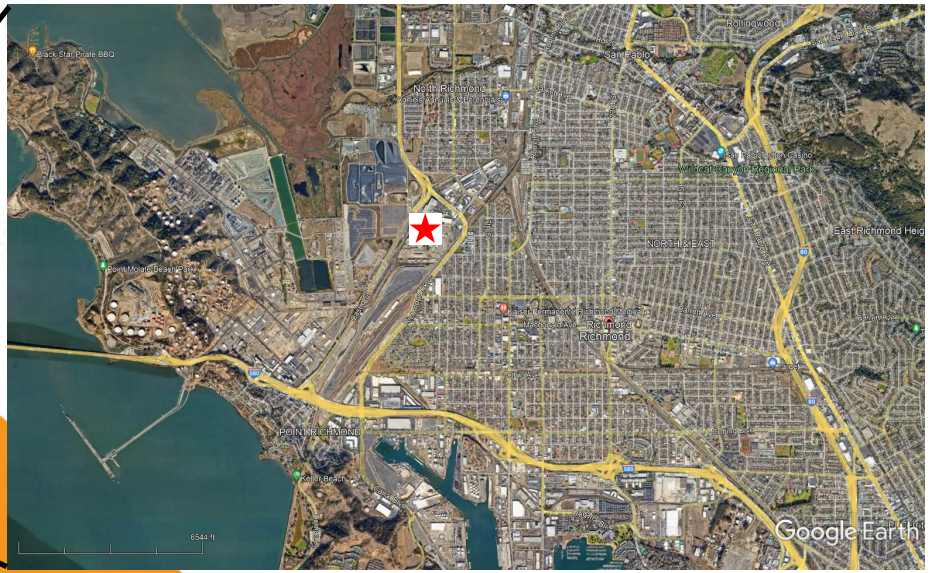
510/261-5500 x104  
510/852-1136 (Cell)



# YARD/PARKING

70,000 SF

1501 Factory Street  
Richmond, CA



**RICHMOND, CA**

JONES DEVELOPMENT COMPANY  
Call Randy Jones  
510/261-5500 x104  
510/852-1136 (Cell)