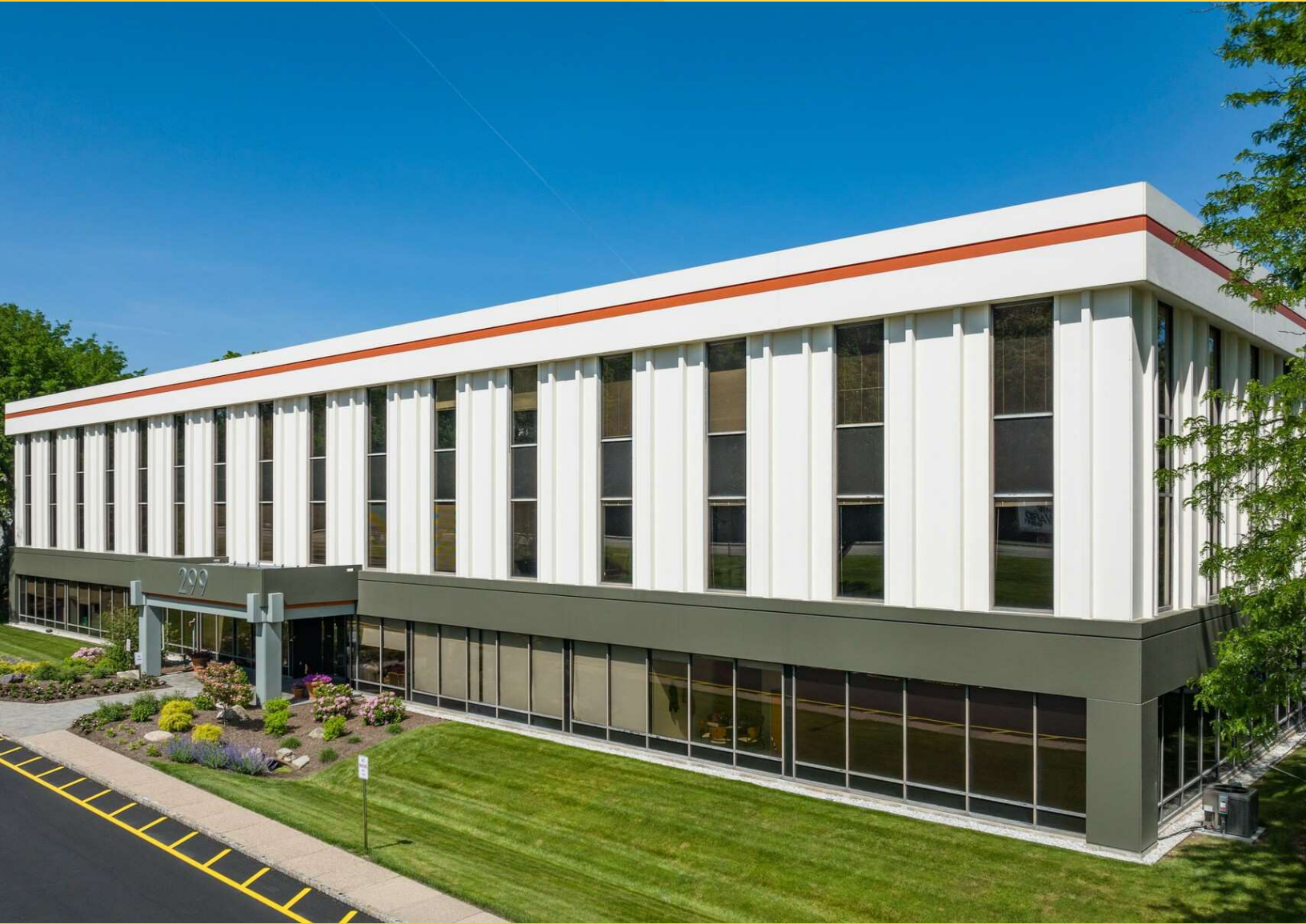


# 299 CHERRY HILL ROAD

299 Cherry Hill Rd  
Parsippany, NJ 07054

## Office For Lease

1,912 SF



Leasing Information:  
973.599.0050

# Lincoln

<b>Rick Genthe</b>	<b>Robert Lee</b>	<b>Sean O'Brien</b>
973.599.0050	973.599.0050	973.599.0050
<a href="mailto:Rgenthe@lpc.com">Rgenthe@lpc.com</a>	<a href="mailto:rlee@lpc.com">rlee@lpc.com</a>	<a href="mailto:sobrien@lpc.com">sobrien@lpc.com</a>

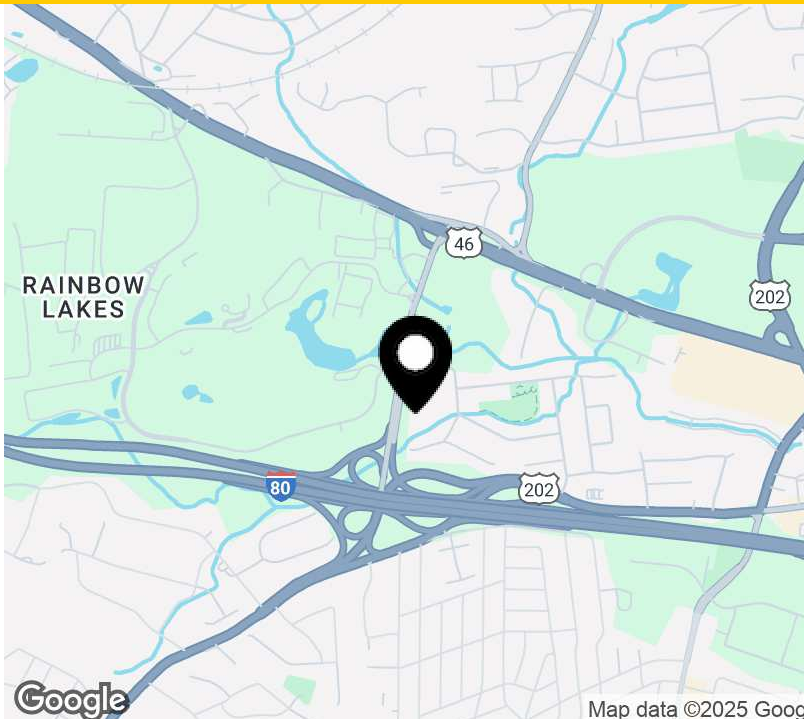
Lincoln Property Company  
9 Entin Road Suite 103  
Parsippany, NJ 07054

[www.lpc.com](http://www.lpc.com)

# 299 CHERRY HILL ROAD

Office For Lease

299 Cherry Hill Rd | Parsippany, NJ 07054



### Property Highlights

- Excellent Access to I-80, I-287, Rt 46 & Rt 202
- Lobby & common area renovations were recently completed.
- New Amenity Center with conference facilities & Grab 'n Go food service
- Abundant parking with EV charging stations
- Office & Medical Welcomed

### Property Overview

299 Cherry Hill Road is one of the most recognized office buildings in Parsippany. Perfectly located directly off I-80 at Exit 42 (Cherry Hill Rd). A three story, 81,000 sf. office building offering flexible floor plates, and recently renovated common areas. 299 Cherry Hill Road additionally offers immediate access to the I-80 & I-287 interchange, approximately 1 mile to the east along with Rt 46 & 202. Offering close proximity to several hotels, restaurants & shopping as well as St. Clare's Hospital - Denville (3.6 miles) & Morristown Memorial Hospital (~8.2 miles).

Availabilities	SF	Lease Rate	Date Available
Suite 301	1,912 SF	Negotiable	Immediately

**Rick Genthe**  
973.599.0050  
Rgenthe@lpc.com

**Robert Lee**  
973.599.0050  
rlee@lpc.com

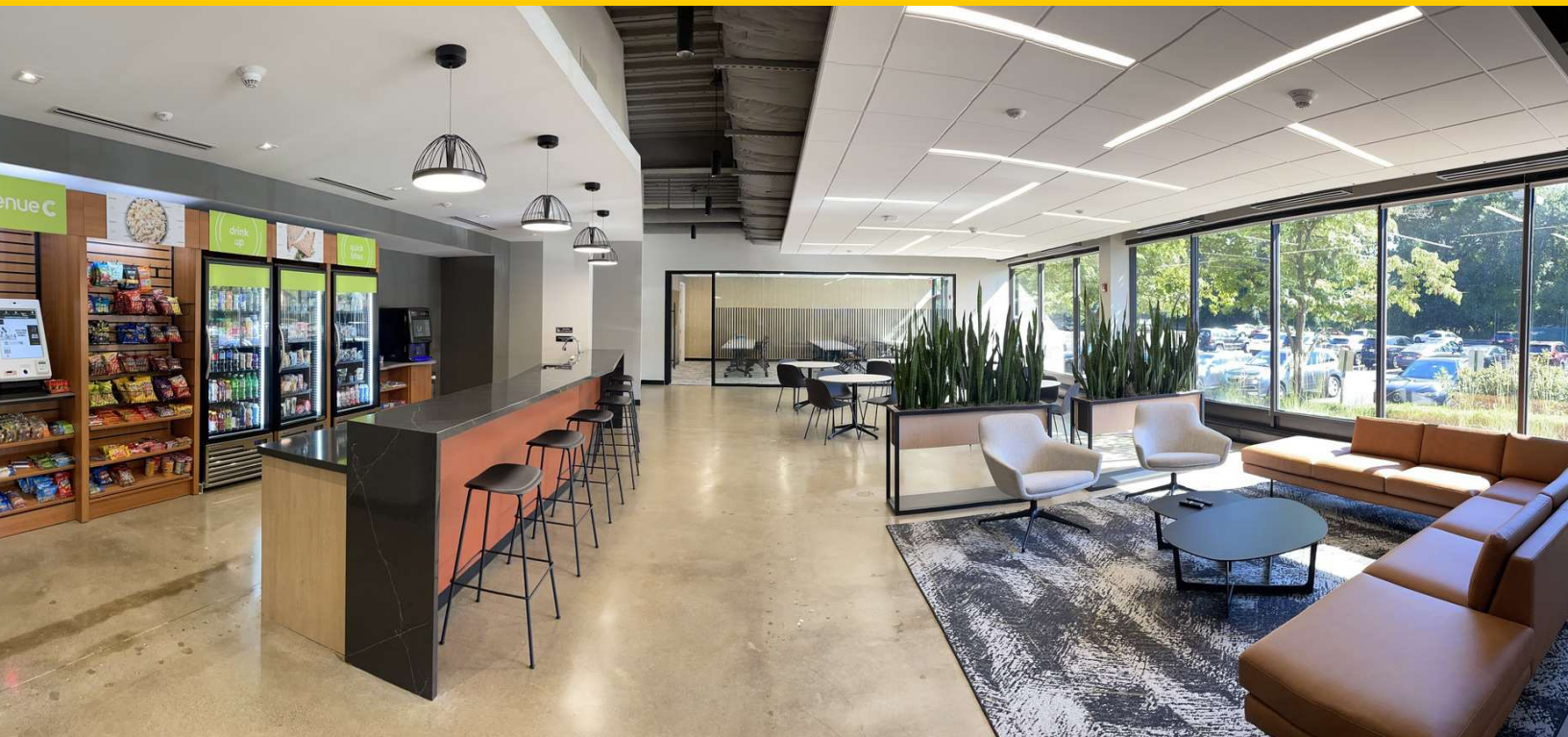
**Sean O'Brien**  
973.599.0050  
sobrien@lpc.com

Lincoln

# 299 CHERRY HILL ROAD

Additional Photos

299 Cherry Hill Rd | Parsippany, NJ 07054



**Rick Genthe**  
973.599.0050  
Rgenthe@lpc.com

**Robert Lee**  
973.599.0050  
rlee@lpc.com

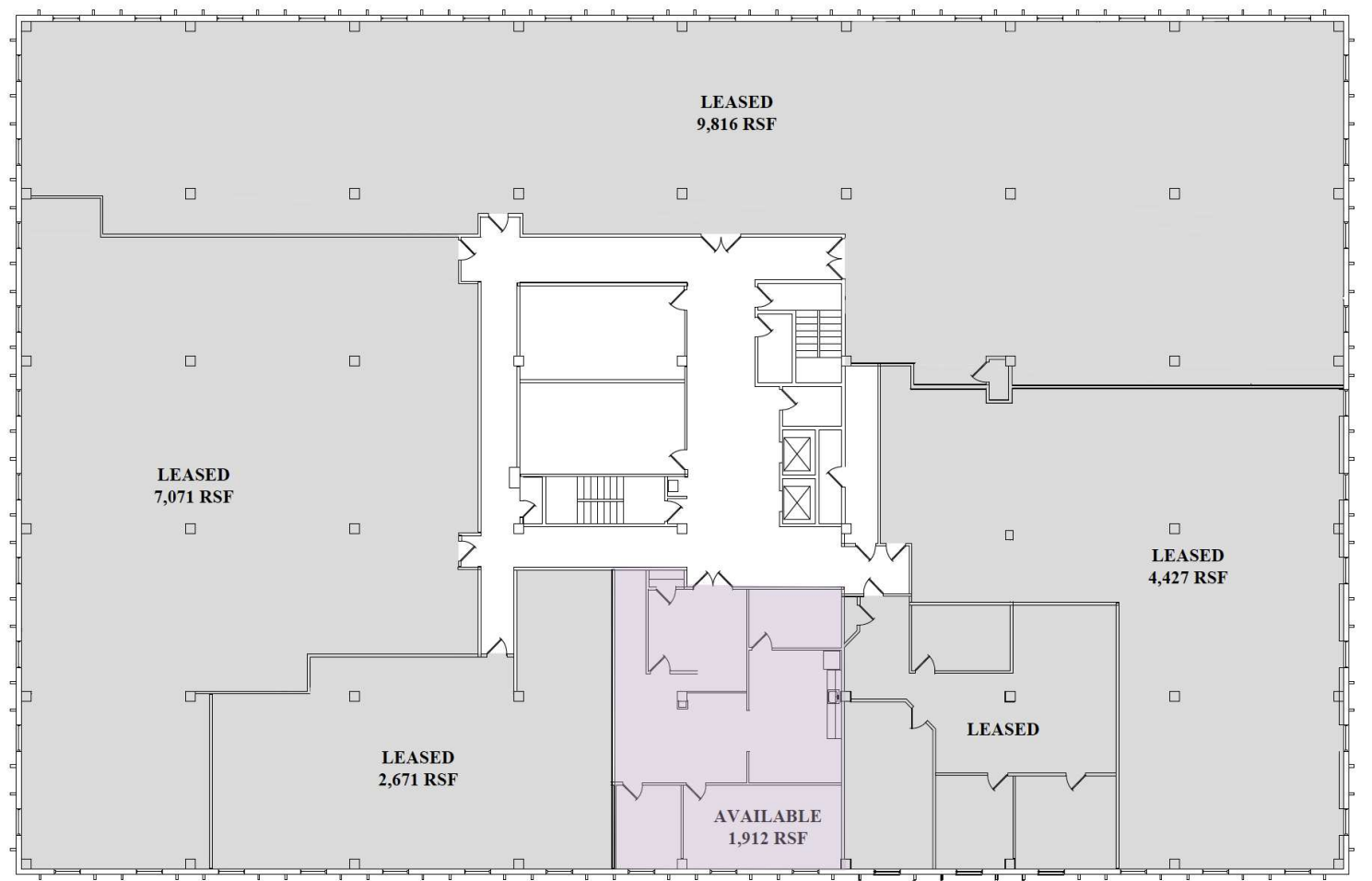
**Sean O'Brien**  
973.599.0050  
sobrien@lpc.com

**Lincoln**

# 299 CHERRY HILL ROAD

3rd Floor

299 Cherry Hill Rd | Parsippany, NJ 07054



Suite	Size	Lease Rate	Description
■ Suite 301	1,912 SF	Negotiable	Available Immediately

**Rick Genthe**  
973.599.0050  
Rgenthe@lpc.com

**Robert Lee**  
973.599.0050  
rlee@lpc.com

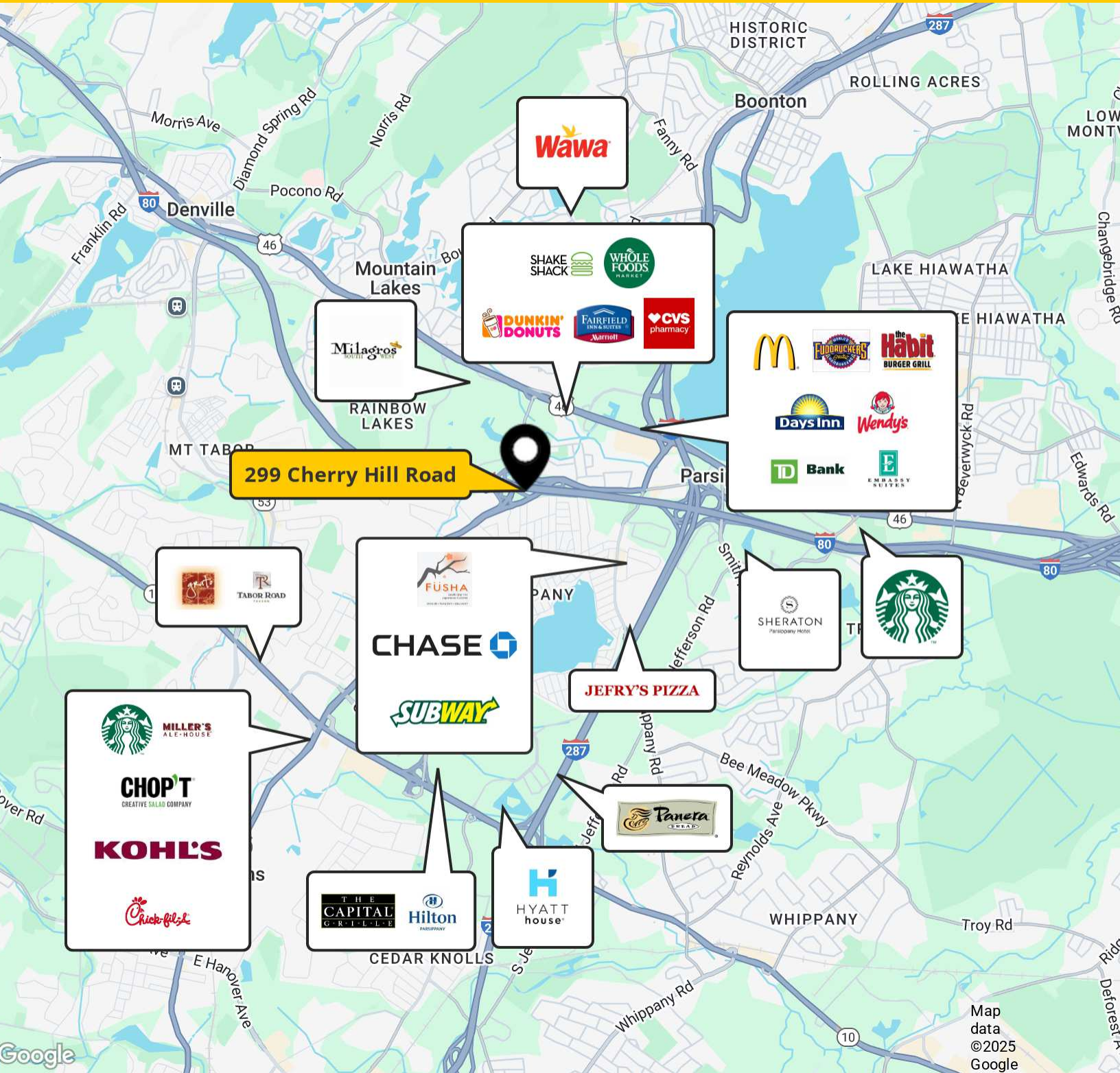
**Sean O'Brien**  
973.599.0050  
sobrien@lpc.com

Lincoln

# 299 CHERRY HILL ROAD

# Location Map

299 Cherry Hill Rd | Parsippany, NJ 07054



<b>Rick Genthe</b> 973.599.0050 Rgenthe@lpc.com	<b>Robert Lee</b> 973.599.0050 rlee@lpc.com	<b>Sean O'Brien</b> 973.599.0050 sobrien@lpc.com
---	---	--

# Lincoln



# 299 CHERRY HILL ROAD

299 Cherry Hill Rd  
Parsippany, NJ 07054

Leasing Information:  
973.599.0050

**Rick Genthe**  
973.599.0050  
Rgenthe@lpc.com

**Robert Lee**  
973.599.0050  
rlee@lpc.com

**Sean O'Brien**  
973.599.0050  
sobrien@lpc.com

## Lincoln

Lincoln Property Company  
9 Entin Road Suite 103  
Parsippany, NJ 07054

[www.lpc.com](http://www.lpc.com)