

# 8265 + 8285 Sunset Blvd

West Hollywood, CA 90046

## CREATIVE OFFICE SPACES FOR LEASE



**COMMERCIAL  
ASSET GROUP**

**Adam Funk**  
Managing Director  
310.666.0124  
afunk@cagre.com  
Lic. 02129715

**Sheela Shouhed**  
Director  
310.272.7383  
sheela@cagre.com  
Lic. 02043384



# PROPERTY HIGHLIGHTS

---

RENTAL RATE  
**\$3.50 PSF/MO, MG**

TERM  
**1 - 5 YEARS**

AVAILABILITY  
**IMMEDIATELY**

PARKING  
**1 SPACE PER SUITE (\$250)  
PRIVATE, GATED PARKING**

These beautiful and spacious high identity buildings along the famous Sunset Strip is ideally located in the heart of West Hollywood - walking distance to many highly rates cafes, restaurants, hotels, and bars. Each suite has its own private restroom and all suites open to a common courtyard with lush plants and gardens.



# 8265 SUNSET BLVD



UNIT	SQFT (±)	VIEW	CAM
111	550	Walkway + Courtyard	\$175
204	650	Sunset Blvd + West View	\$200
206	1,340	Courtyard + Driveway + Sunset Blvd	\$250
207	700	Courtyard + East View	\$200
208	630	North Hills + East View	\$200

# 8285 SUNSET BLVD



UNIT	SQFT (±)	VIEW	CAM
7A	481	West View + Courtyard	\$175
7B	400	Courtyard + North Hills	\$175
5	520	East View + Sunset Blvd	\$175

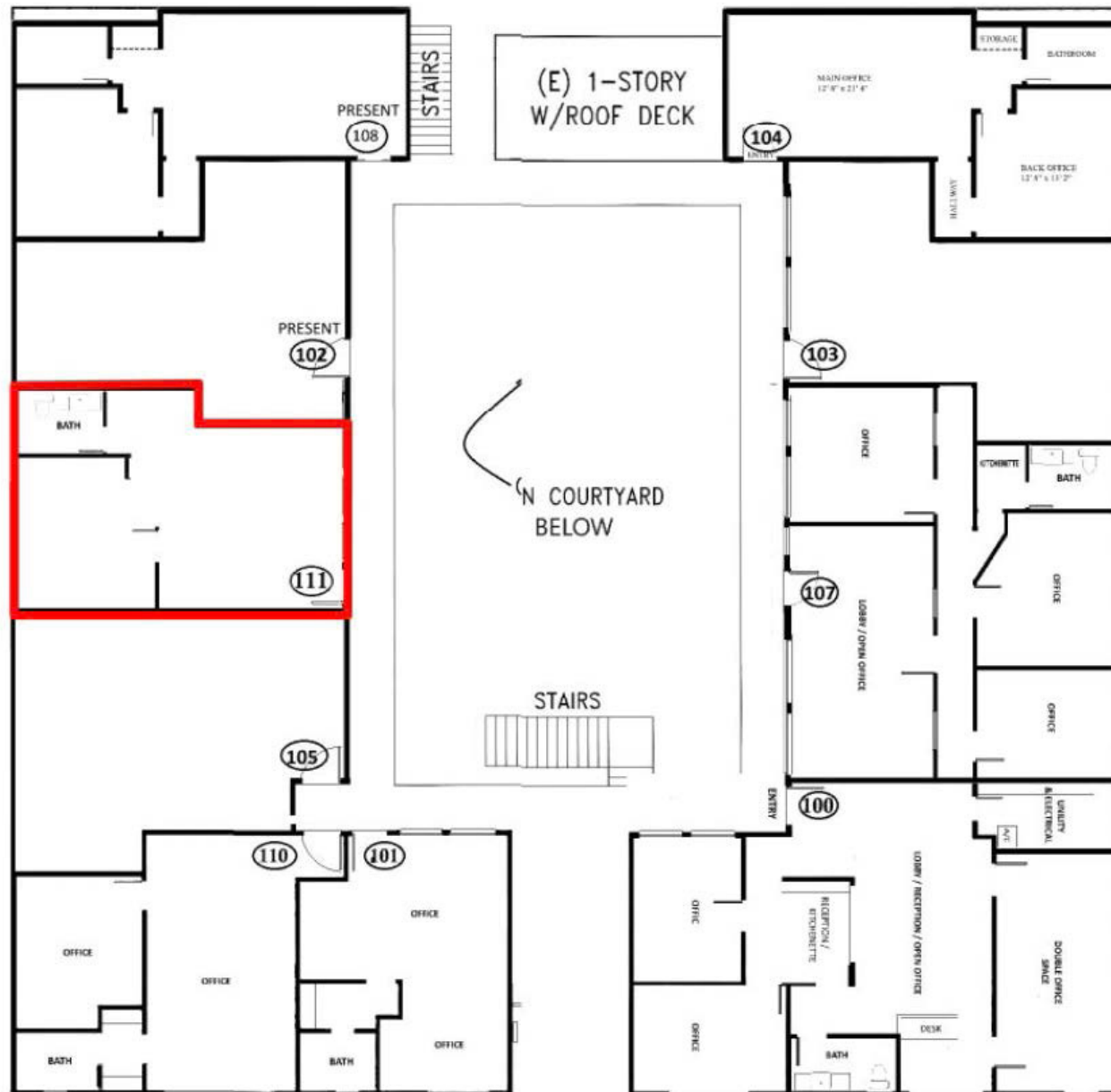


## ADDITIONAL PHOTOS

---



# 8265 SUNSET BLVD FIRST FLOOR PLAN



# 8265 SUNSET BLVD SECOND FLOOR PLAN



# 8285 SUNSET BLVD FLOOR PLAN





# AERIAL





These materials are based on information and content provided by others, which we believe are accurate. No guarantee, warranty or representation is made by Commercial Asset Group, Inc. or its personnel. All interested parties must independently verify accuracy and completeness. As well, any projections, assumptions, opinion, or estimates are used for example only and do not represent the current or future performance of the identified property. Your tax, financial, legal and toxic substance advisors should conduct a careful investigation of the property and its suitability for your needs, including land use limitations. The property is subject to prior lease, sale, change in price, or withdrawal from the market without notice.



**Adam Funk**  
Managing Director  
310.666.0124  
afunk@cagre.com  
Lic. 02129715

**Sheela Shouhed**  
Director  
310.272.7383  
sheela@cagre.com  
Lic. 02043384

**Commercial Asset Group**  
190 N. Canon Drive, STE 300  
Beverly Hills, CA 90210  
P: 310.275.8222 F: 310.275.8223  
www.cagre.com Lic. 01876070



**COMMERCIAL  
ASSET GROUP**