

OAK PARK PLAZA

2323 S. VISTA AVENUE, BOISE ID 83705



FOR LEASE | Office

KARENA GILBERT, SIOR

Vice President
+1 208 488 3164
karena.gilbert@cbre.com

KYLE UHLENKOTT

Senior Associate
+1 208 507 0774
kyle.uhlenkott@cbre.com

HIGHLIGHTS

- Great location and monument sign on Vista Avenue
- Excellent access to the Boise Airport, I-84 and Downtown.
- Monument signage on Vista Avenue.
- Recently updated and new ownership.
- 2 story office building with an elevator and plenty of parking.
- Fiber optics
- Nearby amenities: Willowcreek Grill & Raw Sushi, Johnny's FitClub, Domino's, Dutch Bros., Spitfire Pizza

PROPERTY INFORMATION

Building Type	Office
Available SF	±3,978 - Suite 100 ±2,041 - Suite 104
Lease Rate	\$13.50 psf
NNN	\$5.62 psf
Parking Ratio	4:1,000



First Floor



PROPERTY GALLERY

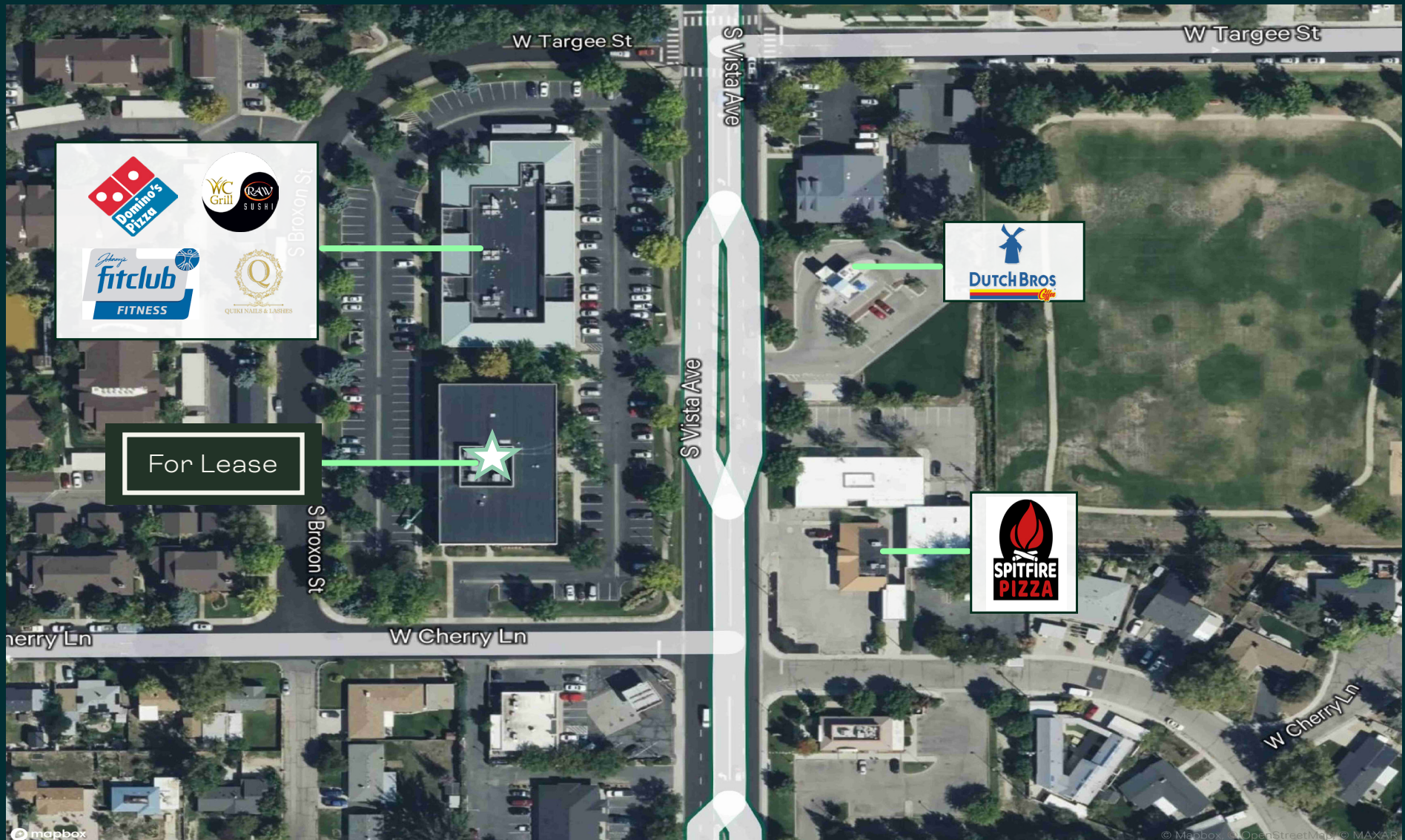
Available \pm 3,978 SF - Suite 100

Available \pm 2,041 SF - Suite 104



LOCATION

Amenities



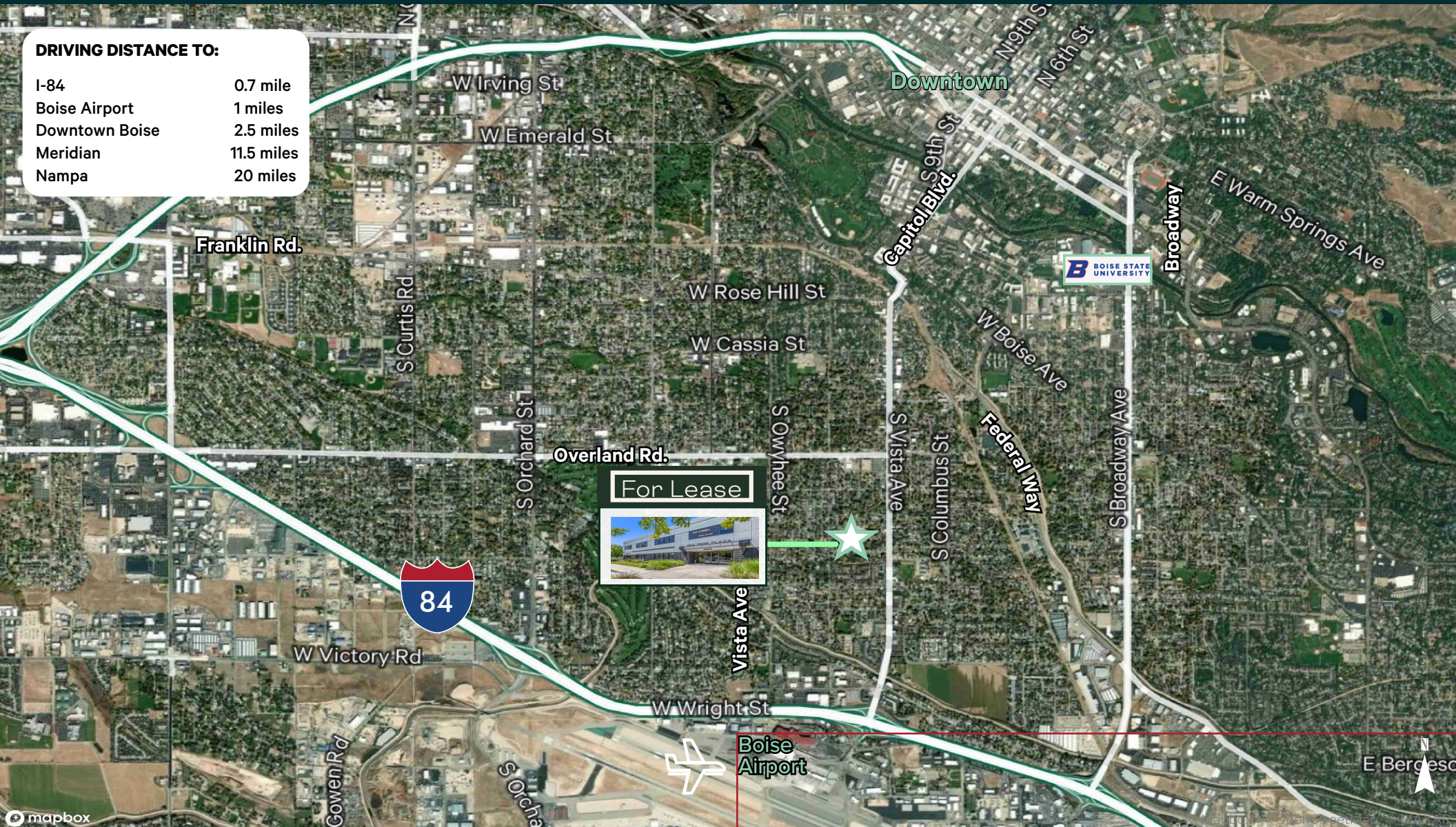
LOCATION

FOR LEASE | Office

Oak Park Plaza | 2323 S. Vista Ave, Boise, ID

DRIVING DISTANCE TO:

I-84	0.7 mile
Boise Airport	1 miles
Downtown Boise	2.5 miles
Meridian	11.5 miles
Nampa	20 miles



CBRE

OAK PARK PLAZA

2323 S. VISTA AVENUE, BOISE ID 83705



FOR LEASE | Office

KARENA GILBERT, SIOR

KYLE UHLENKOTT

Vice President

+1 208 488 3164

karena.gilbert@cbre.com

Senior Associate

+1 208 507 0774

kyle.uhlenkott@cbre.com

CBRE

© 2025 CBRE, Inc. All rights reserved. This information has been obtained from sources believed reliable but has not been verified for accuracy or completeness. CBRE, Inc. makes no guarantee, representation or warranty and accepts no responsibility or liability as to the accuracy, completeness, or reliability of the information contained herein. You should conduct a careful, independent investigation of the property and verify all information. Any reliance on this information is solely at your own risk. CBRE and the CBRE logo are service marks of CBRE, Inc. All other marks displayed on this document are the property of their respective owners, and the use of such marks does not imply any affiliation with or endorsement of CBRE. Photos herein are the property of their respective owners. Use of these images without the express written consent of the owner is prohibited.