

1034 MARLTON PIKE EAST

Suite C - Cherry Hill, NJ 08034

 FOR LEASE

 OFFICE / MEDICAL

 1,324 SF



PROPERTY DESCRIPTION

- Medical / Dental / Professional Office for Lease
- Suite C: 1,324+/- USF
- 5 treatment rooms, lab, waiting area and reception
- Move-in ready
- Pylon signage available
- Good parking
- Located at lighted intersection (Marlton Pike & Chelton Parkway/West Gate Drive) with east/west access. Please note: address is Marlton Pike East, the property is located on the west side of the road.

LEASE RATE:

\$18.00 - 20.00 SF/YR (MG)

FOR MORE INFORMATION

Julie Kronfeld, SIOR

 856.802.6516

 julie.kronfeld@naimertz.com


Rebecca Ting, SIOR

 856.234.9600 x206

 rebecca.ting@naimertz.com

NAI MERTZ DISCLAIMER: NO WARRANTY OR REPRESENTATION, EXPRESS OR IMPLIED, IS MADE AS TO THE ACCURACY OF THE INFORMATION CONTAINED HEREIN, AND THE SAME IS SUBMITTED SUBJECT TO ERRORS, OMISSIONS, CHANGE OF PRICE, RENTAL OR OTHER CONDITIONS, PRIOR SALE, LEASE OR FINANCING, OR WITHDRAWAL WITHOUT NOTICE, AND OF ANY SPECIAL LISTING CONDITIONS IMPOSED BY OUR PRINCIPALS NO WARRANTIES OR REPRESENTATIONS ARE MADE AS TO THE CONDITION OF THE PROPERTY OR ANY HAZARDS CONTAINED THEREIN ARE ANY TO BE IMPLIED. OUTLINES ARE APPROXIMATE AND SHOWN ONLY TO IDENTIFY THE PARCEL IN CONSIDERATION.

NAIMertz

 **NAI Mertz** | 21 Roland Avenue
Mount Laurel, NJ 08054
856.234.9600 | naimertz.com



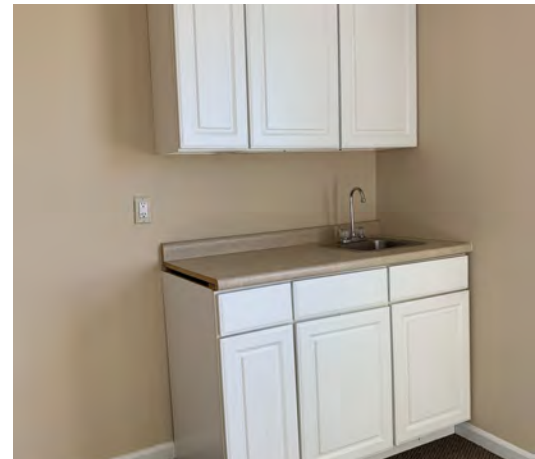
1034 MARLTON PIKE EAST

Suite C - Cherry Hill, NJ 08034

 FOR LEASE

 OFFICE / MEDICAL

 1,324 SF



FOR MORE INFORMATION

Julie Kronfeld, SIOR

 856.802.6516

 julie.kronfeld@naimertz.com


Rebecca Ting, SIOR

 856.234.9600 x206

 rebecca.ting@naimertz.com

NAI MERTZ DISCLAIMER: NO WARRANTY OR REPRESENTATION, EXPRESS OR IMPLIED, IS MADE AS TO THE ACCURACY OF THE INFORMATION CONTAINED HEREIN, AND THE SAME IS SUBMITTED SUBJECT TO ERRORS, OMISSIONS, CHANGE OF PRICE, RENTAL OR OTHER CONDITIONS, PRIOR SALE, LEASE OR FINANCING, OR WITHDRAWAL WITHOUT NOTICE, AND OF ANY SPECIAL LISTING CONDITIONS IMPOSED BY OUR PRINCIPALS NO WARRANTIES OR REPRESENTATIONS ARE MADE AS TO THE CONDITION OF THE PROPERTY OR ANY HAZARDS CONTAINED THEREIN ARE ANY TO BE IMPLIED. OUTLINES ARE APPROXIMATE AND SHOWN ONLY TO IDENTIFY THE PARCEL IN CONSIDERATION.

NAI Mertz

 NAI Mertz | 21 Roland Avenue
Mount Laurel, NJ 08054
856.234.9600 | naimertz.com



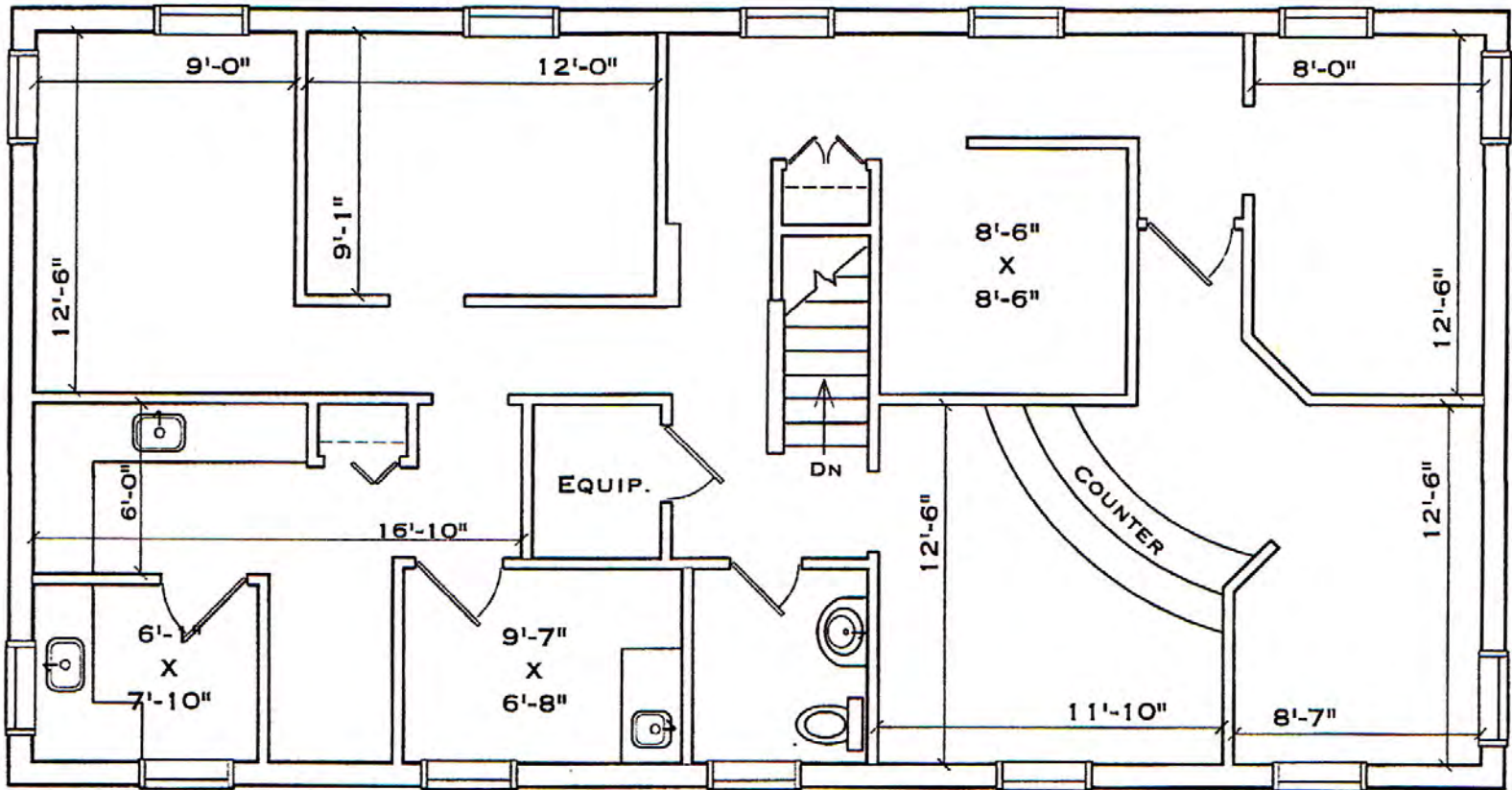
1034 MARLTON PIKE EAST

Suite C - Cherry Hill, NJ 08034

 FOR LEASE

 OFFICE / MEDICAL

 1,324 SF



SECOND FLOOR

OFFICE SUITE

1,324 USABLE SQ. FT.

FOR MORE INFORMATION

Julie Kronfeld, SIOR

 856.802.6516

 julie.kronfeld@naimertz.com


Rebecca Ting, SIOR

 856.234.9600 x206

 rebecca.ting@naimertz.com

NAI MERTZ DISCLAIMER: NO WARRANTY OR REPRESENTATION, EXPRESS OR IMPLIED, IS MADE AS TO THE ACCURACY OF THE INFORMATION CONTAINED HEREIN, AND THE SAME IS SUBMITTED SUBJECT TO ERRORS, OMISSIONS, CHANGE OF PRICE, RENTAL OR OTHER CONDITIONS, PRIOR SALE, LEASE OR FINANCING, OR WITHDRAWAL WITHOUT NOTICE, AND OF ANY SPECIAL LISTING CONDITIONS IMPOSED BY OUR PRINCIPALS NO WARRANTIES OR REPRESENTATIONS ARE MADE AS TO THE CONDITION OF THE PROPERTY OR ANY HAZARDS CONTAINED THEREIN ARE ANY TO BE IMPLIED. OUTLINES ARE APPROXIMATE AND SHOWN ONLY TO IDENTIFY THE PARCEL IN CONSIDERATION.

NAIMertz

 **NAI Mertz** | 21 Roland Avenue
Mount Laurel, NJ 08054
856.234.9600 | naimertz.com



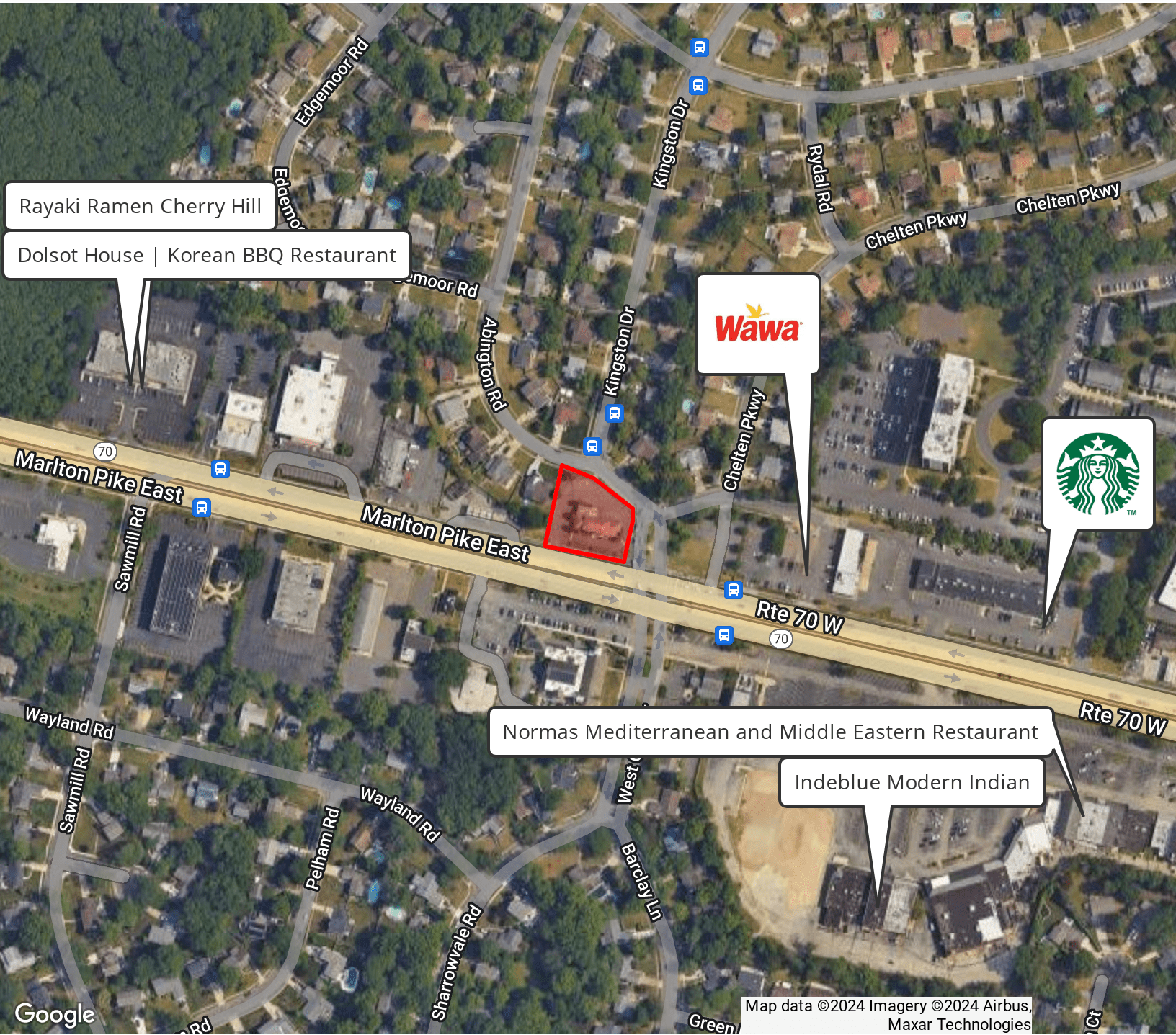
1034 MARLTON PIKE EAST

Suite C - Cherry Hill, NJ 08034

 FOR LEASE

 OFFICE / MEDICAL

 1,324 SF




FOR MORE INFORMATION

Julie Kronfeld, SIOR

 856.802.6516

 julie.kronfeld@naimertz.com


Rebecca Ting, SIOR

 856.234.9600 x206

 rebecca.ting@naimertz.com

NAI MERTZ DISCLAIMER: NO WARRANTY OR REPRESENTATION, EXPRESS OR IMPLIED, IS MADE AS TO THE ACCURACY OF THE INFORMATION CONTAINED HEREIN, AND THE SAME IS SUBMITTED SUBJECT TO ERRORS, OMISSIONS, CHANGE OF PRICE, RENTAL OR OTHER CONDITIONS, PRIOR SALE, LEASE OR FINANCING, OR WITHDRAWAL WITHOUT NOTICE, AND OF ANY SPECIAL LISTING CONDITIONS IMPOSED BY OUR PRINCIPALS NO WARRANTIES OR REPRESENTATIONS ARE MADE AS TO THE CONDITION OF THE PROPERTY OR ANY HAZARDS CONTAINED THEREIN ARE ANY TO BE IMPLIED. OUTLINES ARE APPROXIMATE AND SHOWN ONLY TO IDENTIFY THE PARCEL IN CONSIDERATION.

NAI Mertz

 **NAI Mertz** | 21 Roland Avenue
Mount Laurel, NJ 08054
856.234.9600 | naimertz.com



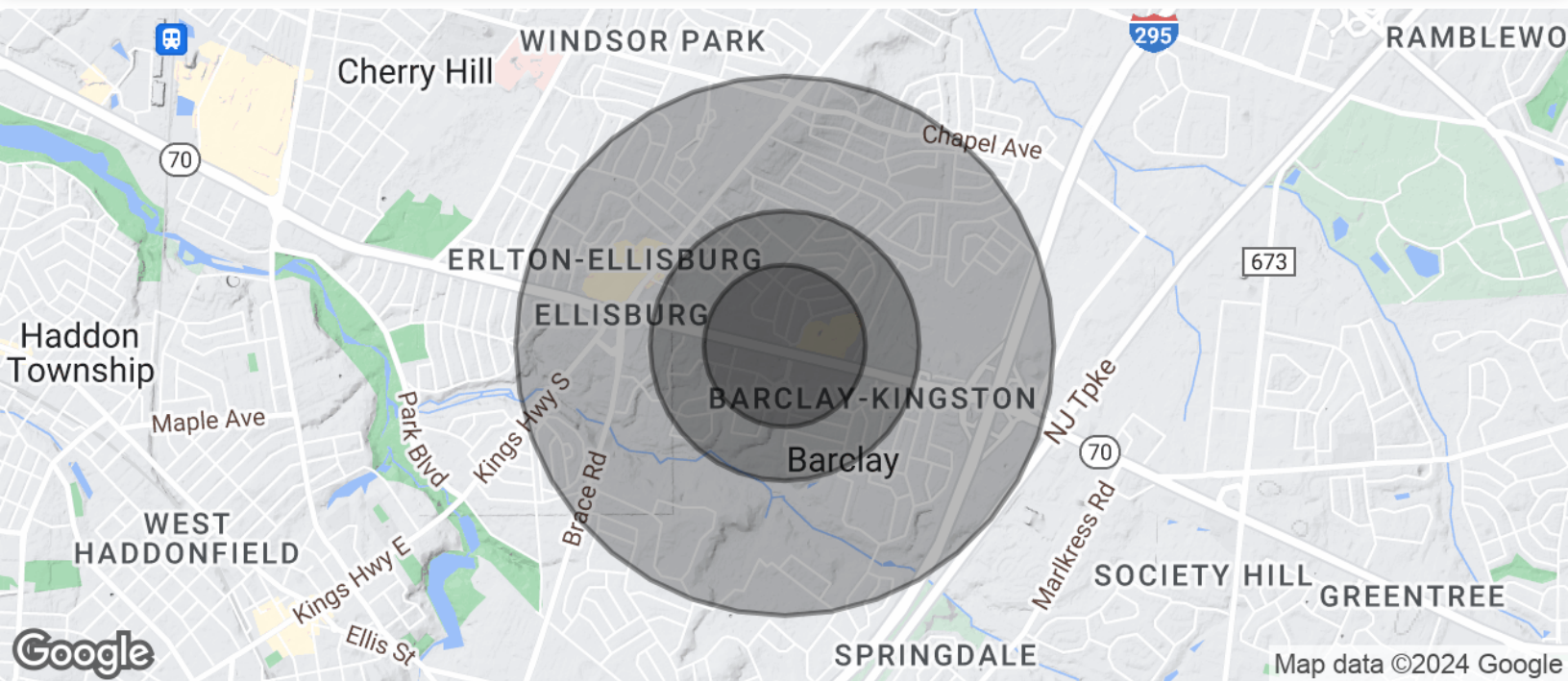
1034 MARLTON PIKE EAST

Suite C - Cherry Hill, NJ 08034

 FOR LEASE

 OFFICE / MEDICAL

 1,324 SF



POPULATION

	0.3 MILES	0.5 MILES	1 MILE
Total Population	669	2,748	11,728
Average Age	42	42	43
Average Age (Male)	0	0	0
Average Age (Female)	0	0	0

HOUSEHOLDS & INCOME

	0.3 MILES	0.5 MILES	1 MILE
Total Households	239	987	4,591
# of Persons per HH	2.8	2.8	2.6
Average HH Income	\$140,339	\$145,118	\$136,539
Average House Value	\$352,889	\$354,835	\$353,082

Demographics data derived from AlphaMap


FOR MORE INFORMATION

Julie Kronfeld, SIOR

 856.802.6516


 julie.kronfeld@naimertz.com

Rebecca Ting, SIOR

 856.234.9600 x206

 rebecca.ting@naimertz.com

NAIMertz

 **NAI Mertz** | 21 Roland Avenue
Mount Laurel, NJ 08054
856.234.9600 | naimertz.com

NAI MERTZ DISCLAIMER: NO WARRANTY OR REPRESENTATION, EXPRESS OR IMPLIED, IS MADE AS TO THE ACCURACY OF THE INFORMATION CONTAINED HEREIN, AND THE SAME IS SUBMITTED SUBJECT TO ERRORS, OMISSIONS, CHANGE OF PRICE, RENTAL OR OTHER CONDITIONS, PRIOR SALE, LEASE OR FINANCING, OR WITHDRAWAL WITHOUT NOTICE, AND OF ANY SPECIAL LISTING CONDITIONS IMPOSED BY OUR PRINCIPALS NO WARRANTIES OR REPRESENTATIONS ARE MADE AS TO THE CONDITION OF THE PROPERTY OR ANY HAZARDS CONTAINED THEREIN ARE ANY TO BE IMPLIED. OUTLINES ARE APPROXIMATE AND SHOWN ONLY TO IDENTIFY THE PARCEL IN CONSIDERATION.

