



**LEE &
ASSOCIATES**
COMMERCIAL REAL ESTATE SERVICES
TAMPA BAY

**BEST VALUE
IN WESTSHORE**

28,420 SF

**FREE STANDING/SINGLE TENANT OFFICE BUILDING
FOR LEASE IN THE WESTSHORE SUBMARKET**

EISENHOWER TECHNOLOGY PARK 4710 EISENHOWER BLVD, BLDG D | TAMPA, FL 33634

JEFF TOLRUD, CCIM
813 300 1436
jtolrud@lee-associates.com

JULIA SILVA, SIOR
813 230 8008
jsilva@lee-associates.com

JESSICA MIZRAHI, SIOR
813 804 0886
jmizrahi@lee-associates.com

BEN EWERS
352 362 8535
bewers@lee-associates.com



All information furnished regarding property for sale, rental or financing is from sources deemed reliable, but no warranty or representation is made to the accuracy thereof and same is submitted to errors, omissions, change of price, rental or other conditions prior to sale, lease or financing or withdrawal without notice. No liability of any kind is to be imposed on the broker herein.

PROPERTY OVERVIEW

Presenting an exceptional opportunity to lease 28,420 SF of prime Office/Lab space situated in Tampa's highly-desireable Westshore Submarket. Eisenhower Technology Park features prominent visibility from the Veterans Expressway, strong signage opportunities along George Road, and convenient access to major thoroughfares including the Veterans Expressway, Hillsborough Avenue, Courtney Campbell Causeway, and I-275.

PROPERTY HIGHLIGHTS

- Available November 2026
- 100% Office
- Direct Access on George Road
- Free-Standing Building w/ Signage Opportunity
- On-Site Property Management
- 1 Dock-High Door (Ability to Add 6 Grade-Level Doors)
- Internet Available Through Spectrum or Frontier
- Fully Spinklered



EISENHOWER TECHNOLOGY PARK 4710 EISENHOWER BLVD, BLDG D | TAMPA, FL 33634

JEFF TOLRUD, CCIM
813 300 1436
jtolrud@lee-associates.com

JULIA SILVA, SIOR
813 230 8008
jsilva@lee-associates.com

JESSICA MIZRAHI, SIOR
813 804 0886
jmizrahi@lee-associates.com

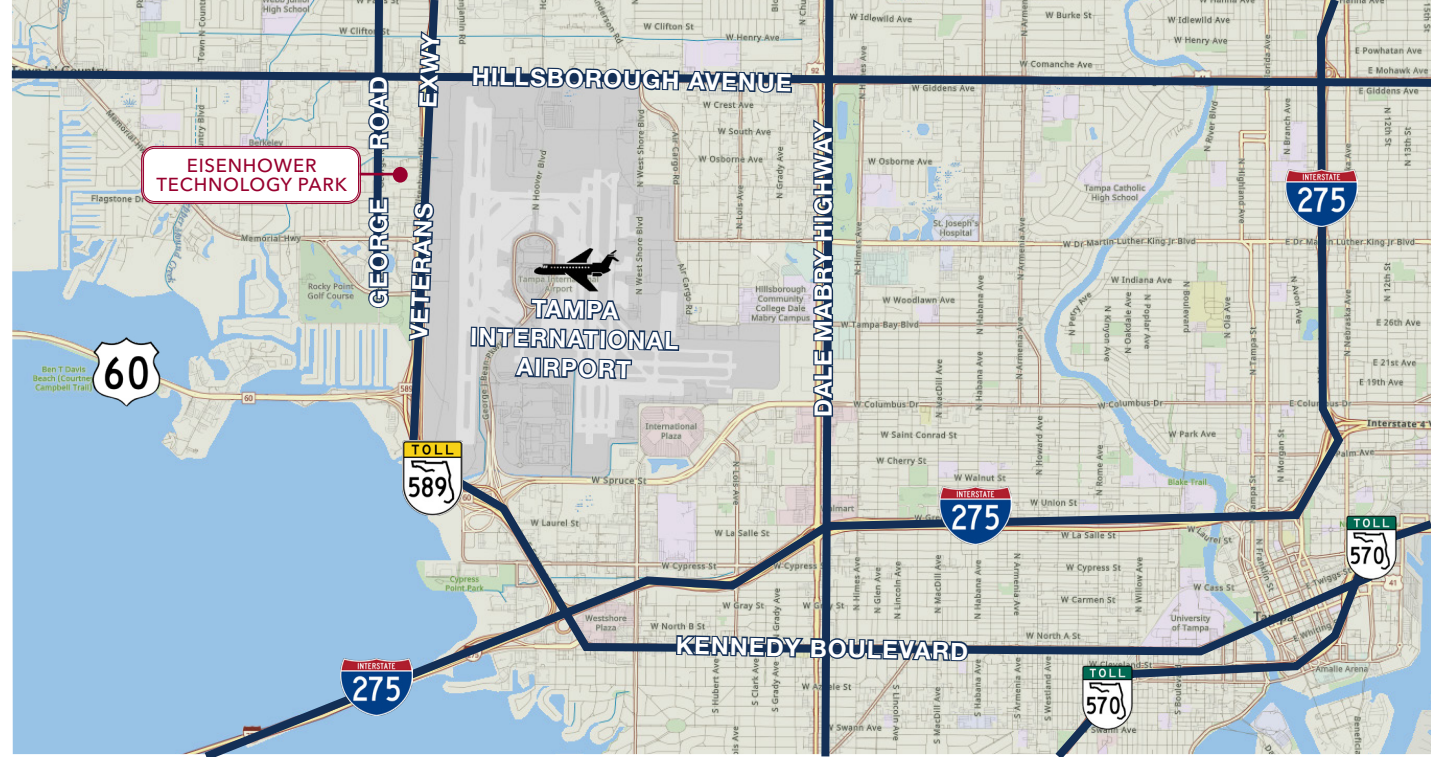
BEN EWERS
352 362 8535
bewers@lee-associates.com



All information furnished regarding property for sale, rental or financing is from sources deemed reliable, but no warranty or representation is made to the accuracy thereof and same is submitted to errors, omissions, change of price, rental or other conditions prior to sale, lease or financing or withdrawal without notice. No liability of any kind is to be imposed on the broker herein.

DRIVING DISTANCES

- Veterans Expwy 0.7 Miles
- Hillsborough Ave 0.7 Miles
- SR 60 1.7 Miles
- I-275 3.3 Miles
- Dale Mabry Hwy 3.4 Miles
- Kennedy Blvd 3.7 Miles
- Selmon Expwy 8.0 Miles



DEMOGRAPHICS

POPULATION

	TOTAL RESIDENTS	DAYTIME WORKFORCE
1 MILE	8,134	11,410
5 MILES	223,419	302,868
10 MILES	738,747	984,876



EISENHOWER TECHNOLOGY PARK 4710 EISENHOWER BLVD, BLDG D | TAMPA, FL 33634

JEFF TOLRUD, CCIM
813 300 1436
jtolorud@lee-associates.com

JULIA SILVA, SIOR
813 230 8008
jsilva@lee-associates.com

JESSICA MIZRAHI, SIOR
813 804 0886
jmizrahi@lee-associates.com

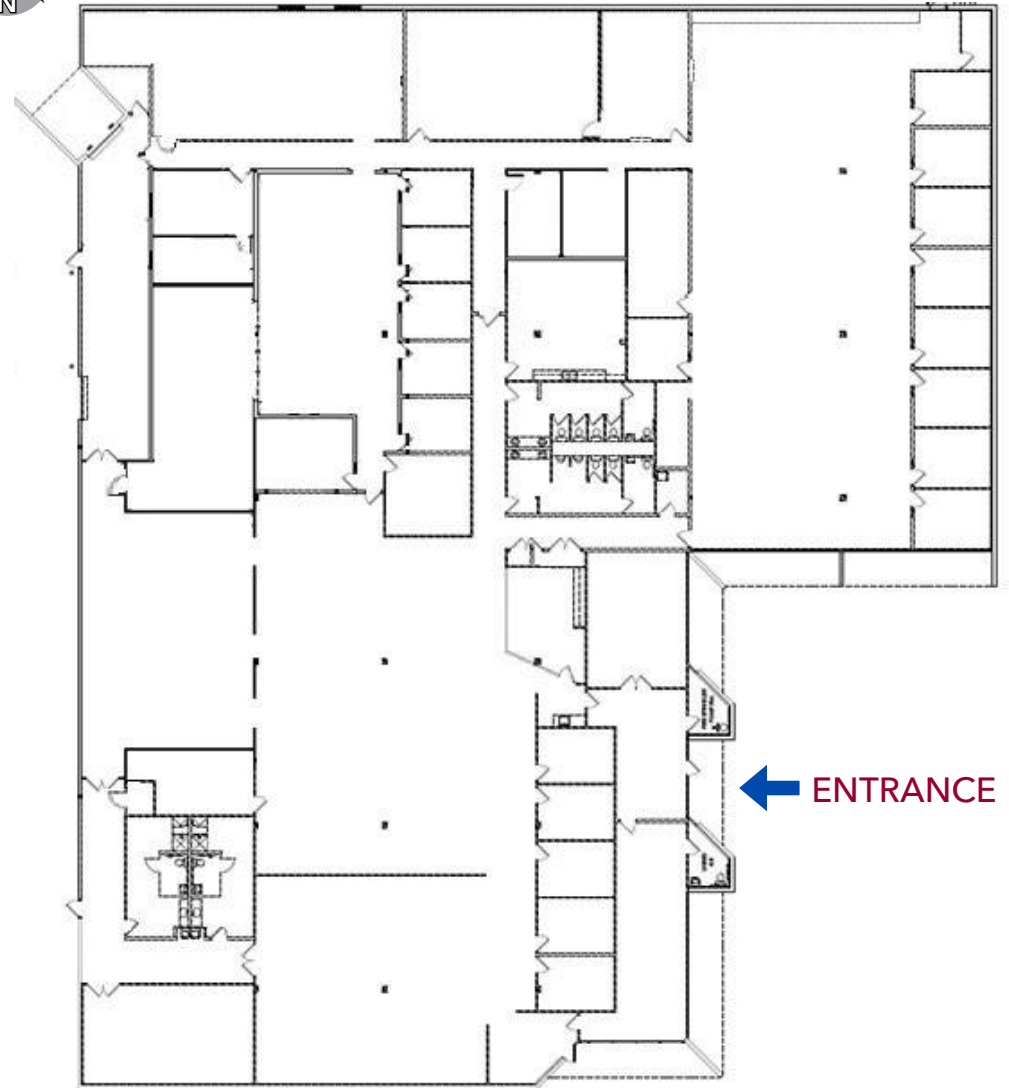
BEN EWERS
352 362 8535
bewers@lee-associates.com



All information furnished regarding property for sale, rental or financing is from sources deemed reliable, but no warranty or representation is made to the accuracy thereof and same is submitted to errors, omissions, change of price, rental or other conditions prior to sale, lease or financing or withdrawal without notice. No liability of any kind is to be imposed on the broker herein.



FLOOR PLAN



EISENHOWER TECHNOLOGY PARK 4710 EISENHOWER BLVD, BLDG D | TAMPA, FL 33634

JEFF TOLRUD, CCIM
813 300 1436
jtolrud@lee-associates.com

JULIA SILVA, SIOR
813 230 8008
jsilva@lee-associates.com

JESSICA MIZRAHI, SIOR
813 804 0886
jmizrahi@lee-associates.com

BEN EWERS
352 362 8535
bewers@lee-associates.com



All information furnished regarding property for sale, rental or financing is from sources deemed reliable, but no warranty or representation is made to the accuracy thereof and same is submitted to errors, omissions, change of price, rental or other conditions prior to sale, lease or financing or withdrawal without notice. No liability of any kind is to be imposed on the broker herein.