

FOR SUBLEASE

**1333 E. Highland Road**

Macedonia, Ohio 44056



**CUSHMAN &  
WAKEFIELD**

**CRESCO**  
Real Estate

**30,515 SF**

SPACE AVAILABLE



**Matterport™**  
Office



**Matterport™**  
Warehouse



# PROPERTY FEATURES



**30,515 SF**

TOTAL SUBLEASE SIZE

**7.25 ACRES**

TOTAL SITE SIZE

## COMMENTS

- Recently refinished offices with new LED lights, carpet and paint
- Generous glass-lines over looking water feature and abundant landscaping
- Low operating expenses due to exceptional building and property management
- Potential future expansion space within the building
- Historically 100% occupancy due to exceptional value and quality
- Sublease expires: June 2, 2027 with longer terms available

## CURRENT AVAILABILITIES

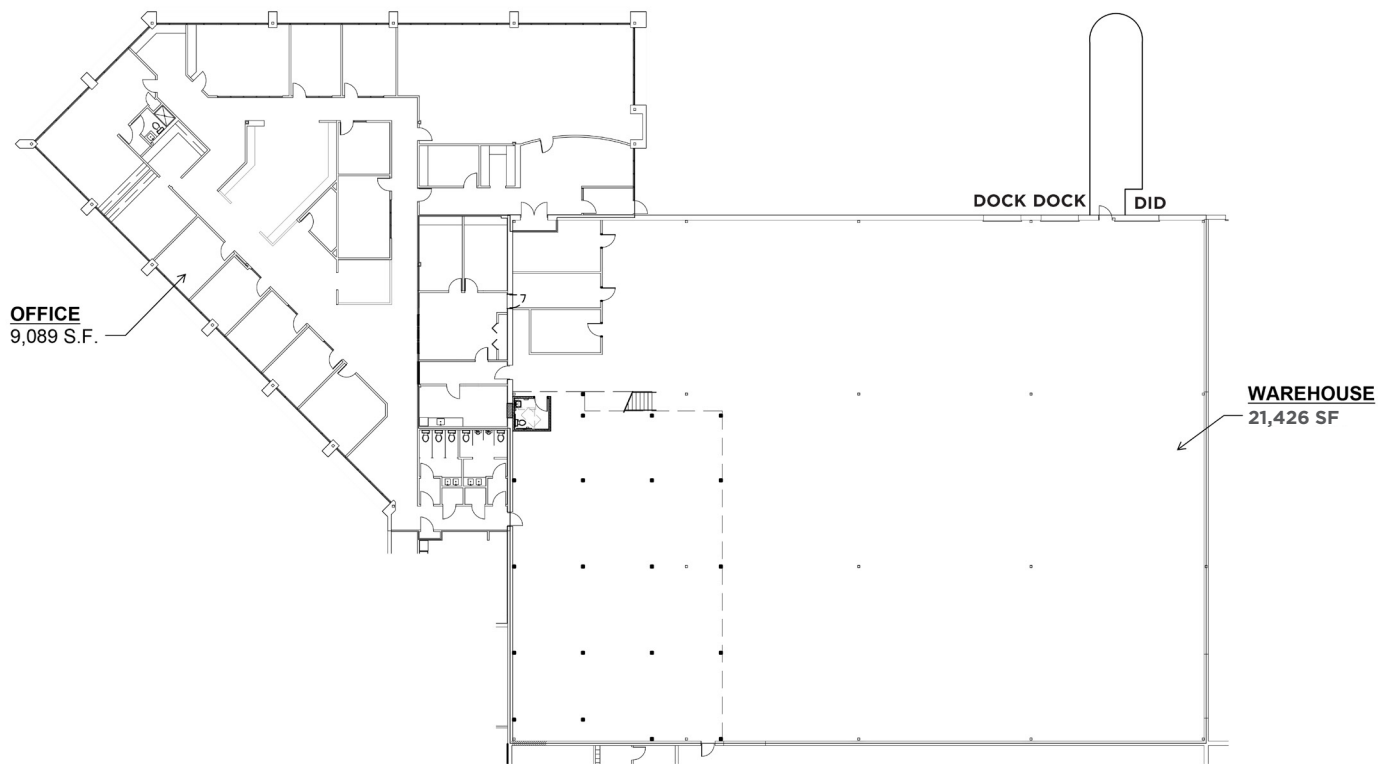
### UNIT 1

<b>30,515 SF</b> TOTAL SPACE AVAILABLE	<b>9,089 SF</b> EXISTING OFFICE SPACE	<b>21,426 SF</b> EXISTING WHSE SPACE
<b>ONE (1)</b> DRIVE-IN DOOR	<b>TWO (2)</b> DOCKS W/LEVELERS	<b>20'</b> CLEAR HEIGHT

## PROPERTY SPECIFICATIONS

YEAR BUILT	1990 / 2021
CONSTRUCTION	Brick/stone
CEILING HEIGHT	20'
SPRINKLER	100% wet
LIGHTING	LED
HEAT	Air-rotation/gas/forced air
DOCKS	Two (2) with levelers
DRIVE-IN DOOR	One (1)
AIR-CONDITIONING	HVAC office - rooftop/office
ROOF	Rubber membrane
FLOOR	Concrete 5"
PARKING	120+ spaces
POWER	600A/480V/3P

# PROPERTY FLOOR PLAN



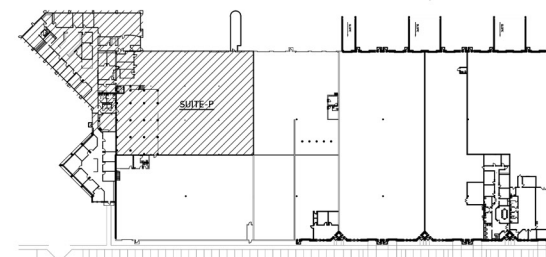
1  
21.2

**SUITE - P: EXISTING FLOOR PLAN**

SCALE: 1/16" = 1'-0"

SQUARE FOOTAGE: 30,515 SF

**BUILDING REFERENCE PLAN**





# PROPERTY PHOTOS

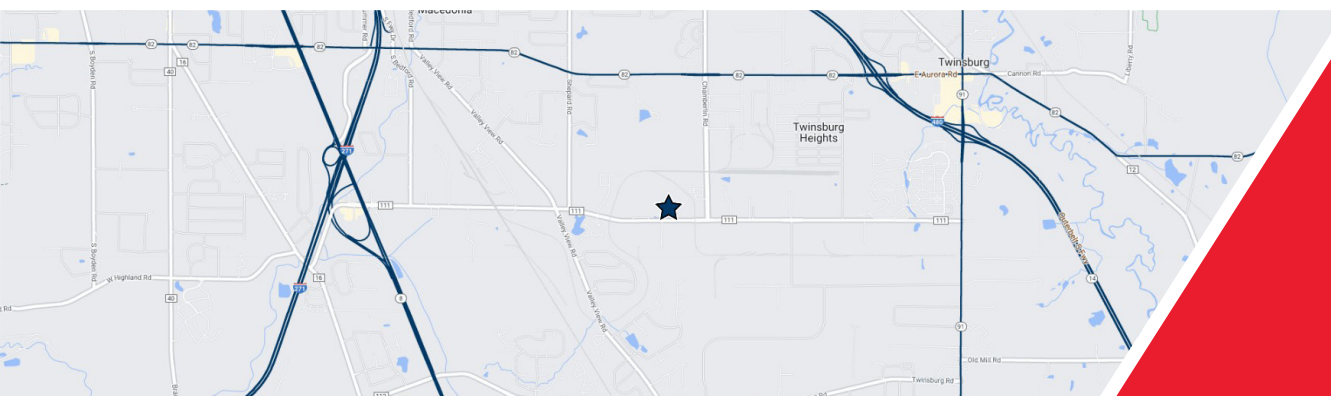


Office





# PROPERTY AERIAL MAP



Easy access  
to I-271 & I-480

**MATTHEW E. BEESLEY** / Executive Vice President & Partner Emeritus / [mbeesley@crescorealestate.com](mailto:mbeesley@crescorealestate.com) / +1 216 525 1466

**BOB GARBER, SIOR** / Executive Vice President & Partner Emeritus / [bgarber@crescorealestate.com](mailto:bgarber@crescorealestate.com) / +1 216 525 1467

**Cushman & Wakefield | CRESCO** / 6100 Rockside Woods Blvd, Suite 200, Cleveland, Ohio / +1 216 520 1200 / [crescorealestate.com](http://crescorealestate.com)

*Independently Owned and Operated / A Member of the Cushman & Wakefield Alliance*

Cushman & Wakefield Copyright 2025. No warranty or representation, express or implied, is made to the accuracy or completeness of the information contained herein, and same is submitted subject to errors, omissions, change of price, rental or other conditions, withdrawal without notice, and to any special listing conditions imposed by the property owner(s). As applicable, we make no representation as to the condition of the property (or properties) in question. A licensee at Cushman & Wakefield | CRESCO may have an interest in the client entity offering this property for sale.