

15895 STURGEON STREET
ROSEVILLE, MICHIGAN

INDUSTRIAL FOR LEASE
14,738 Square Feet Available



**SIGNATURE
ASSOCIATES**
KNOW SIGNATURE | KNOW RESULTS



PROPERTY FEATURES

- 14,738 square feet available
- 2,400 square feet office
- 21' clear height
- (3) 14' x 14', 12' x 14' grade level doors
- (3) 5-Ton, (2) 10-Ton & (1) 7.5-Ton cranes, 16' underhook
- 2000 amps, 480 volts, 3-phase power
- Concrete parking lot in excellent condition
- LED lighting
- New roof and mezzanine storage
- Located 1 mile north of I-696
- Lease Rate: \$8.50/sq.ft. NNN



For more information, please contact:

KRIS PAWLOWSKI
(248) 359 3801

kpawlowski@signatureassociates.com

JOE HAMWAY
(248) 948 0113

jhamway@signatureassociates.com

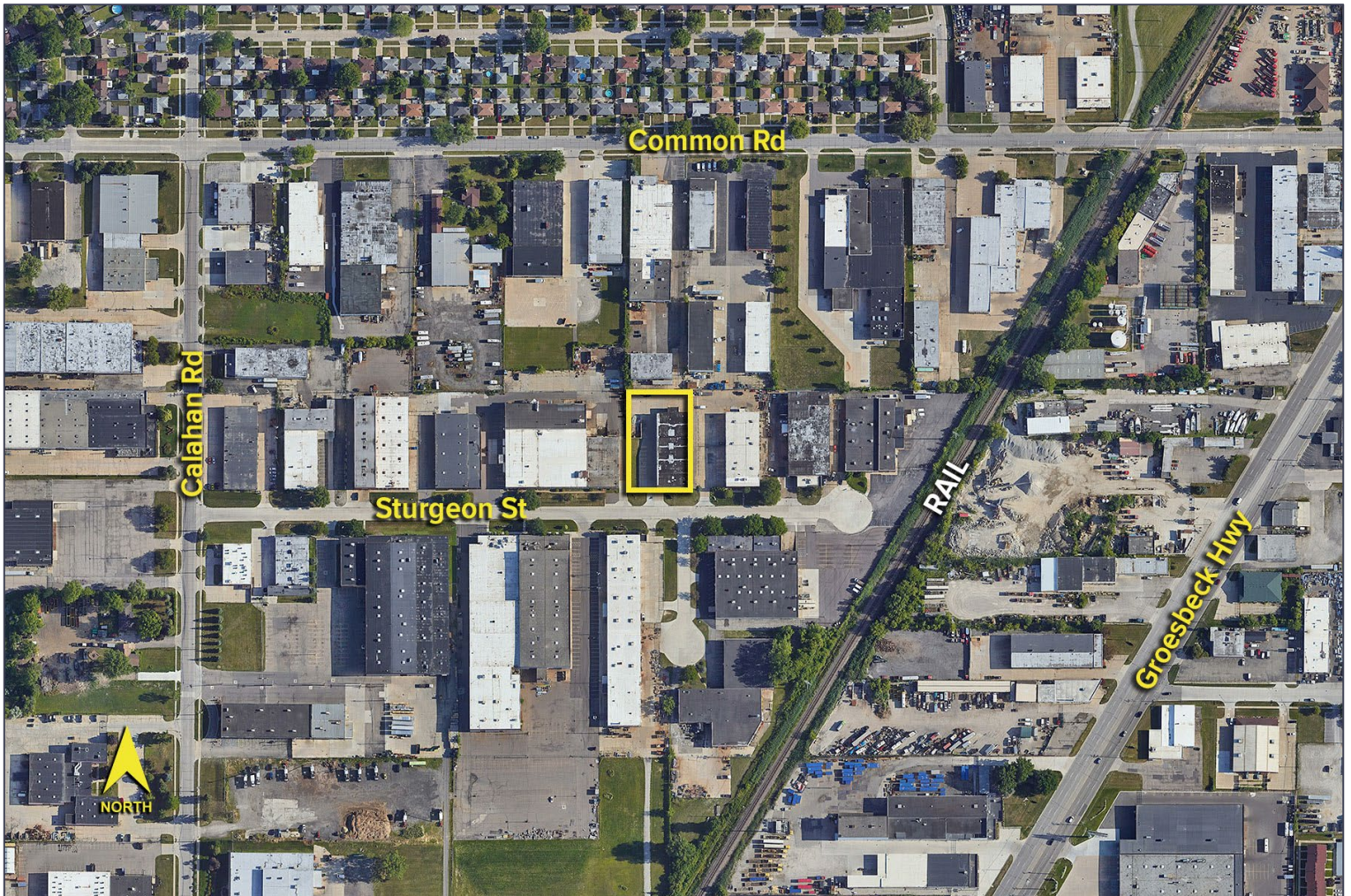
SIGNATURE ASSOCIATES
One Towne Square, Suite 1200
Southfield, MI 48076
www.signatureassociates.com

15895 Sturgeon Street – Roseville, Michigan

Industrial For Lease

14,738
Square Feet
AVAILABLE

Aerial



For more information, please contact:

KRIS PAWLOWSKI

(248) 359 3801

kpawlowski@signatureassociates.com

JOE HAMWAY

(248) 948 0113

jhamway@signatureassociates.com

SIGNATURE ASSOCIATES

One Towne Square, Suite 1200

Southfield, MI 48076

www.signatureassociates.com