

GREAT SUBLEASE OPPORTUNITY IN COLUMBIA AREA



AVAILABLE FOR SUBLEASE

● AVAILABILITY

- 4,348 SF to 15,252 SF

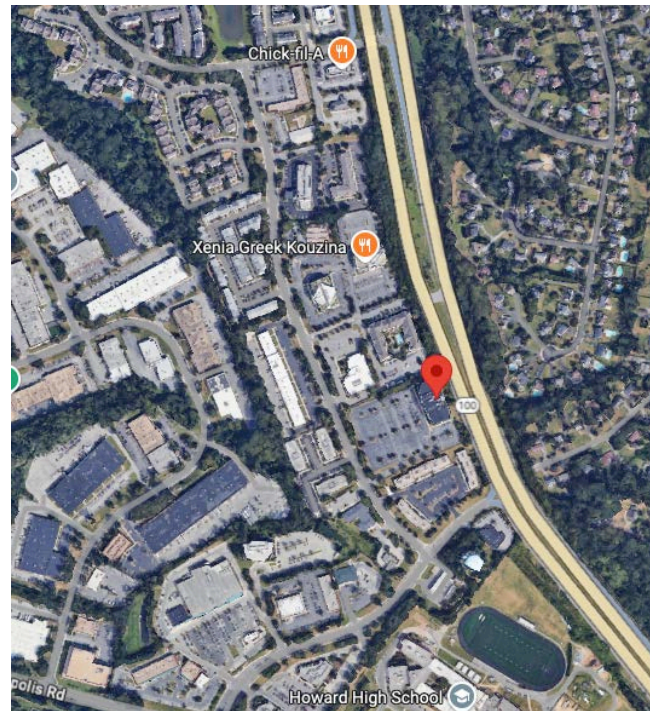
*Sublease available through 9/30/2025

● RENTAL RATE

- MAKE AN OFFER!!! No Reasonable Offer Refused!

● PROPERTY FEATURES

- Beautiful space with glass walls/doors, high ceilings, high end finishes
- Furniture available for Plug & Play
- Double door entrance off lobby
- Tremendous amount of parking
- Huge windowline and great buildout



● FOR ADDITIONAL INFORMATION, CONTACT

DOUGLAS KAUFMAN

410.952.3290

dkaufman@agmcommercial.com

8820 Columbia 100 Parkway, Ste. 300
Columbia, MD 21045



INTERIOR PICTURES



A
V
A
I
L
A
B
L
E
F
O
R
S
U
B
L
E
A
S
E

FOR ADDITIONAL INFORMATION, CONTACT

DOUGLAS KAUFMAN

410.952.3290

dkaufman@agmcommercial.com

AGM Commercial Real Estate Advisors 5900 Wilmary Lane, Baltimore, MD 21210

www.agmcommercial.com

Although information contained herein is from sources deemed reliable, such information has not been verified and is submitted subject to errors, omissions, change of price, withdrawal or further change without notice. We include projections, opinion, assumptions or estimates for example only, and they may not represent current or future performance of the property. You, along with your tax and legal advisors, should conduct your own investigation of the property and transaction.

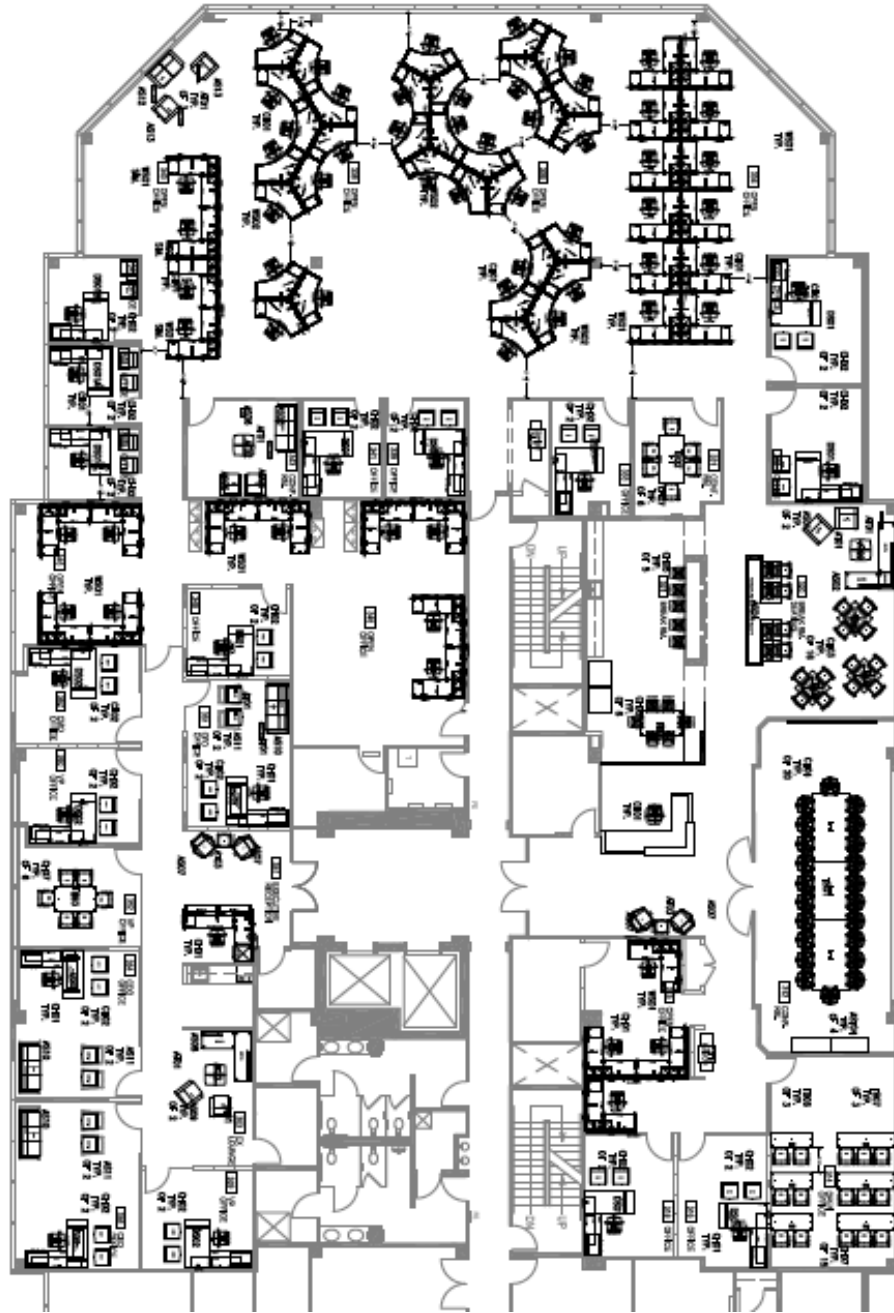
8820 Columbia 100 Parkway, Ste. 300
Columbia, MD 21045



COMMERCIAL REAL ESTATE ADVISORS

AVAILABLE FOR SUBLEASE

FLOOR PLAN



FOR ADDITIONAL INFORMATION, CONTACT

DOUGLAS KAUFMAN

410.952.3290

dkaufman@agmcommercial.com

AGM Commercial Real Estate Advisors 5900 Wilmary Lane, Baltimore, MD 21210

www.agmcommercial.com

Although information contained herein is from sources deemed reliable, such information has not been verified and is submitted subject to errors, omissions, change of price, withdrawal or further change without notice. We include projections, opinion, assumptions or estimates for example only, and they may not represent current or future performance of the property. You, along with your tax and legal advisors, should conduct your own investigation of the property and transaction.