



Los Senderos

RESIDENTIAL/COMMERCIAL
MASTER-PLANNED DEVELOPMENT

CBRE

900± ACRES - MULTIPLE TRACTS FOR SALE



ALONG INTERSTATE 25 AT MORRIS RD
LOS LUNAS, NEW MEXICO

Los Lunas - One of the most innovative & strategic communities in New Mexico



SURROUNDED BY MULTIPLE AMENITIES, EMPLOYERS AND DEVELOPMENTS, INCLUDING:

- ▶ Meta (Facebook) Data Center
- ▶ Amazon Fulfillment Center
- ▶ Home Depot
- ▶ Walmart Supercenter and Distribution Center
- ▶ Lowe's Home Improvement
- ▶ Jubilee Active Senior Residential Development
- ▶ River Park hiking trails and El Cerro Open Space hiking trails which connect to Los Senderos community trails
- ▶ New UNM Valencia Campus Workforce Training Center
- ▶ Future Sagebrush Church



NEW EMPLOYERS AND ROBUST RESIDENTIAL DEVELOPMENT

- ▶ I-25 and Morris Rd interchange and extension will provide easy access to all New Mexico regional destinations
- ▶ 20 minutes South of Albuquerque International Airport
- ▶ 25 minutes South of the I-25/I-40 intersection

PENDING CONTRACT
±1,000 AC

SOLD
±497 AC

Hidden Mtn
Switching
Station
Sold 52 AC

PIONEER TRAIL RD
amazon
Sold 100 AC

Meta
Sold 945± Acres

Walmart
Distribution Center

niagara

Los Morros
Business Park

Los Lunas
High School

INTERMODAL YARD
RELATED ACT
CENTRAL
NEW MEXICO
RAIL PARK
(44± acres)

FUTURE PHASE
TRACT 1
(109 acres)

PENDING CONTRACT
±197 AC

PENDING CONTRACT
±26 AC
RENEWABLE

VILLAGE OF LOS
LUNAS
TRANSFER
STATION

PENDING CONTRACT
±10 AC
RENEWABLE

Legacy @ Sierra

HB HAKES BROTHERS

**Abrazo
HOMES**

Jubilee

**LGI
HOMES**

HB HAKES BROTHERS

AVAILABLE
±25 AC

CHC
COMMUNITY
HOSPITAL
UNDER
CONSTRUCTION

Walmart

goodwill

THE HOME DEPOT

LOWE'S

PENDING CONTRACT
±80 AC
RENEWABLE

705± AC.
HUNING LAND

HR-4

Open Space

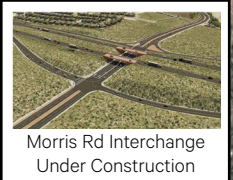
Los Senderos

**LGI
HOMES**

SOLD

PLANNED
VILLAGE OF
LOS LUNAS
REGIONAL
PARK

THE UNIVERSITY OF
NEW MEXICO
VALENCIA TRAINING CENTER



122± AC.
HUNING LAND

MORRIS RD
EXTENSION

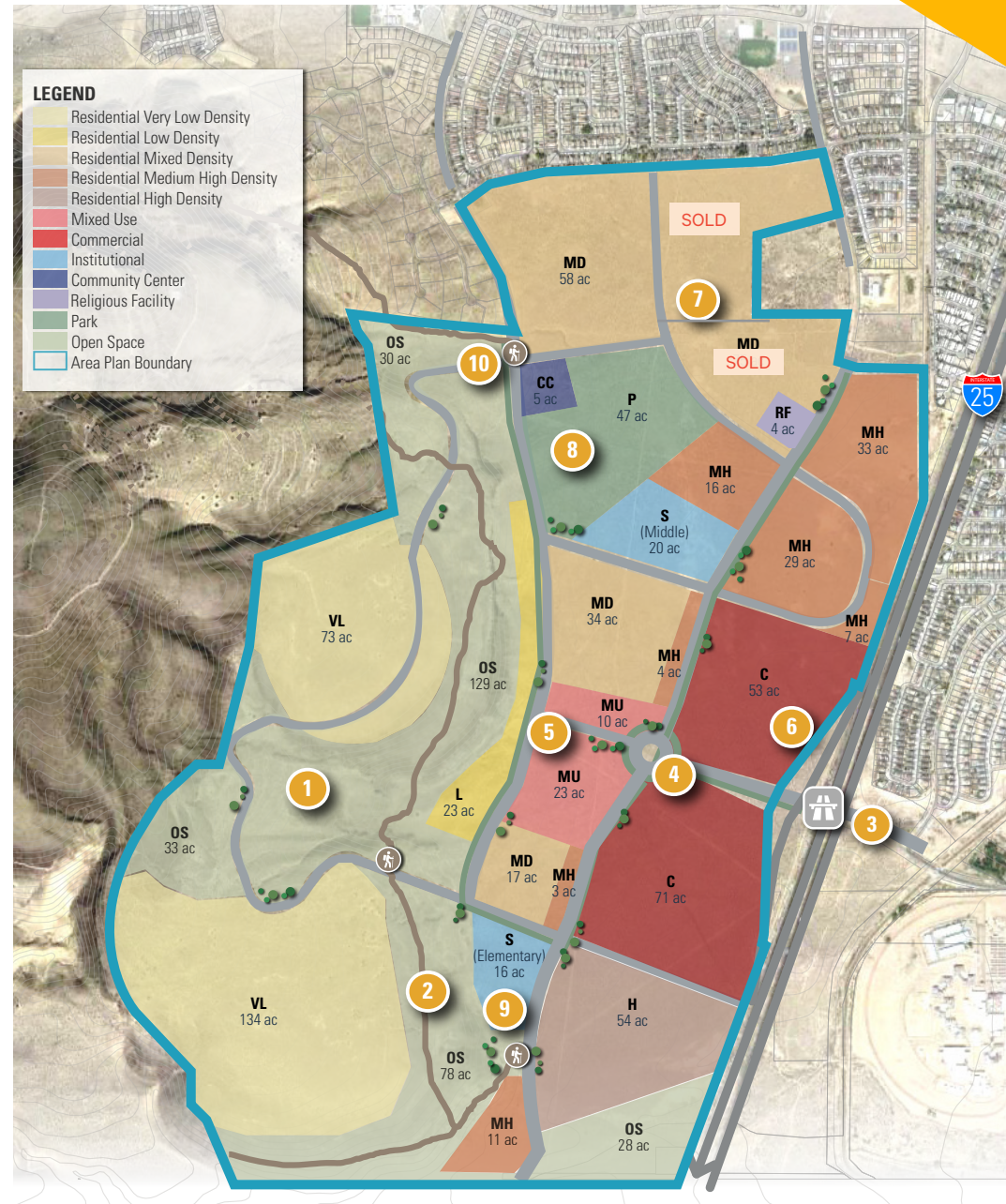
24.4±
AC.

15 MIN TO ABQ INTERNATIONAL AIRPORT
25 MIN TO INTERSTATE 40

Development Framework

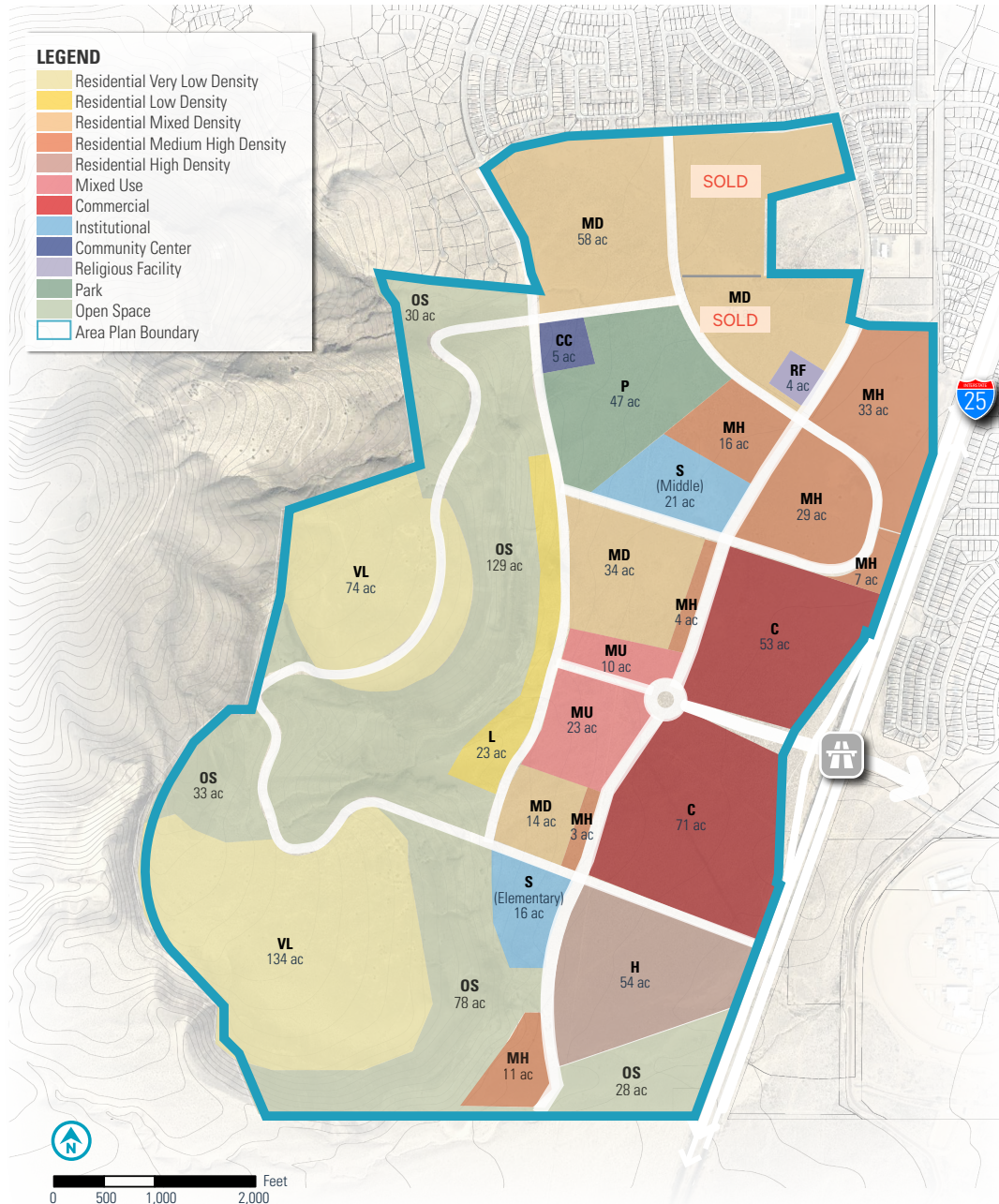
The Development Framework illustrates the ultimate development vision for the Los Senderos community; key elements of that vision are outlined below:

1. An extensive open space network that preserves ecological resources such as the bluffs of El Cerro de Los Lunas Preserve and significant arroyos that should remain in a natural state to serve as a functional amenity, providing natural stormwater management, wildlife habitat, and recreational opportunities.
2. A network of more formalized and rural multi-use trails within the open space and more urban roadway network to create internal and external access, connectivity, and recreational opportunities. This trail network is a key organizing feature of the community from which it derives its name.
3. The new Morris Rd and I-25 Interchange will provide direct access into the Los Senderos community at a central point along Huning Ranch Loop. Direct interstate access will make Los Senderos more accessible and should help to stimulate its growth. Breaking ground Q4 2024.
4. A roundabout at the terminus of the interchange along Huning Ranch Loop will circulate traffic into the development's more fine-grained roadway network. Aside from its transportation functions, this feature will be enhanced with signage and landscape to simultaneously serve as a gateway feature that creates a sense of arrival into the community.
5. A mixed-use neighborhood center located directly to the west of the gateway roundabout accommodates a vibrant mix of residential, retail, and office development at a character and scale appropriate for the surrounding area.
6. Commercial development fronts the interchange to take advantage of highly visible parcels and naturally buffer the residential villages from impacts of the adjacent interchange such as noise.
7. A variety of residential villages that are strategically clustered around open space preserves and accommodate a variety of choice in housing products ranging from single-family to medium- and high-density residential uses.
8. A regional park facility that accommodates desired community services including a community center, softball, and soccer fields. The park is connected to the trail system by the adjacent trailhead.
9. Two school sites that include an elementary school on the southern end of the community and a middle school at the northern end collocated adjacent to the regional park. Two school sites that include an elementary school on the southern end of the community and a middle school at the northern end collocated adjacent to the regional park.
10. A trailhead at the intersection of Huning Ranch Loop and the Upper Loop to provide direct access to open space and trail amenities for residents and the greater Village of Los Lunas community.



Source: Dekker/Perich/Sabatini

Land Use District Overview



Land Use Designations	Acreeage	Allowed Possible Du/Ac	Max Possible Du
Very Low Density Residential (VL)	208	1	208
Low Density Residential (L)	23	4	92
Mixed Density Residential (MD)	181	7	1267
Medium High Density Residential (MH)	102	15	1530
High Density Residential (H)	54	25	1350
Mixed Use (MU)	33	15	495
Subtotal	601		4942
Commercial (C)	124		
Schools (S)	36		
Community Center (CC)	5		
Religious Facilities (RF)	4		
Park (P)	47		
Open Space (OS)	298		
Subtotal	515		
Total Acreeage	1115		

Source: Dekker/Perich/Sabatini



LOS LUNAS OVERVIEW

The Village of Los Lunas has become known as one of the most pro-growth communities in the State of New Mexico. Due to its' proximity to Interstate 25 and Highway 6, businesses have been drawn to the area by easy access, proximity to Albuquerque, pro-growth development, low taxes and existing infrastructure. Besides major retailers such as Lowe's, Home Depot, restaurants and entertainment venues, the area has attracted major employers such as a 600,000 SF Walmart distribution center, a new Amazon distribution facility and a 2,800,000 SF, six-phase, billion-dollar Meta data center. The Village incentives and pro-growth attitude have been a tremendous success and bode well for future residential and employment growth.

VALENCIA COUNTY DEMOGRAPHICS



80,025
POPULATION



28,784
HOUSEHOLDS



\$76,673
AVERAGE HH INCOME



\$310,789
AVERAGE VALUE OF OWNER
OCCUPANCY HOUSING UNITS



23.1%
OF POPULATION HAS AN
BACHELOR'S DEGREE+

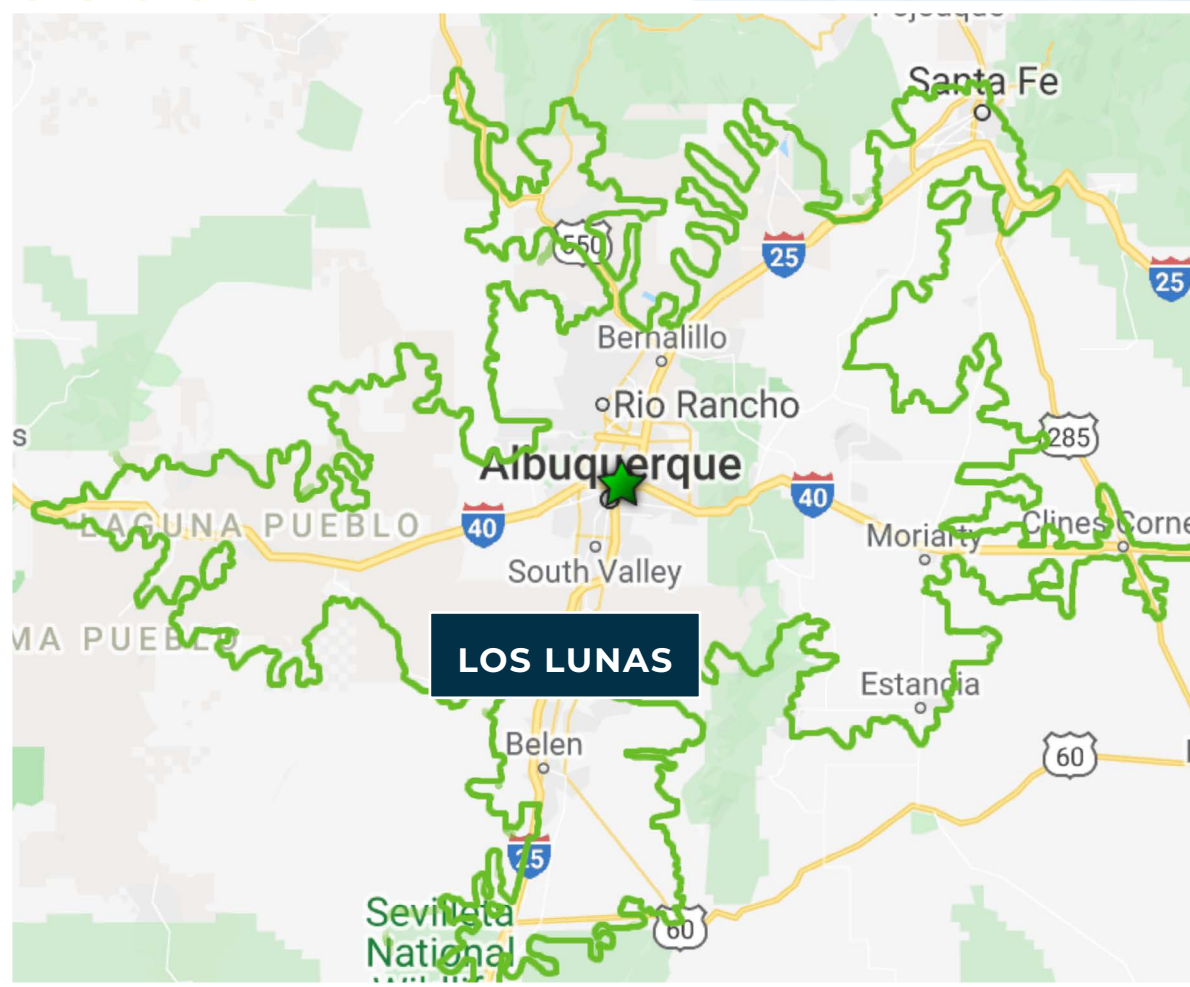
Source: Esri



1,058,923 POPULATION

WITHIN A
60-MINUTE DRIVE TIME
FROM I-25 AND I-40

Source: Esri, 2024



60 MIN DRIVE TIME DEMOGRAPHIC HIGHLIGHTS

(I-25/I-40 INTERCHANGE)



1,058,923
POPULATION



434,889
HOUSEHOLDS



\$98,208
AVERAGE HH INCOME



\$412,332
MEDIAN HOUSING
VALUE



37.8%
OF POPULATION
HAS AN BACHELOR'S
DEGREE
OR HIGHER

Source: Esri

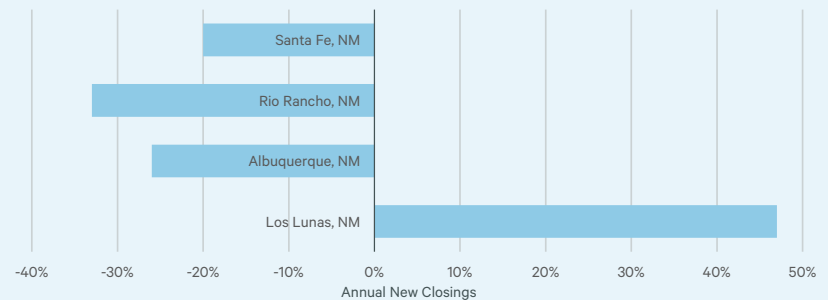


Housing Growth in Los Lunas

HOUSING MARKET HIGHLIGHTS

- ▶ Due to low resale inventory, new homes are poised for continued growth in 2026
- ▶ Los Lunas, NM was the only market in the MSA with an increase of new residential closings from 4Q 2024 vs 4Q 2025. All other markets experienced a decrease year-over-year.

Q4 2024 VS Q4 2025 ANNUAL NEW CLOSINGS



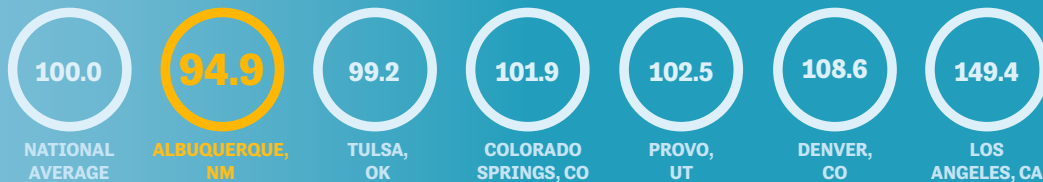
QUALITY OF LIFE

The greater Albuquerque region, which includes Los Lunas, averages 310 days of sunshine each year and offers a variety of outdoor activities including golfing, hiking, camping, horseback riding, picnicking, skiing, hunting, fishing, ballooning and mountain climbing.

The region ranks among the top in the nation for cities with the most college graduates with 37.8% of the population holding a bachelor's degree or higher.

Greater Albuquerque is consistently under the national index mark of the C2ER Cost of Living Index. With more than 1,800 hospital beds, the region is the center of health care excellence in New Mexico. The University of New Mexico (UNM) is a nationally recognized Level 1 Trauma Center.

COST OF LIVING INDEX



Source: C2ER, EMSI



TRANSPORTATION SYSTEMS

- ▶ **Albuquerque International Sunport** is served by ten airlines with 5.4 million annual passengers.
- ▶ **Commuter Train**- The New Mexico Rail Runner connects Los Lunas residents to the greater Albuquerque region with over 100 Miles of track running from Los Lunas to Santa Fe, New Mexico. The commuter train services over 12M+ passengers since it opened in 2006 and provides stops throughout Los Lunas, Albuquerque and Santa Fe with 15 Rail Runner Express stations.
- ▶ **Two major highways (I-25 and I-40)** bisect the city, providing national access for business and industry in the city as well as for several motor freight companies operating in the Albuquerque area. Albuquerque is only a 6.5 hour drive to Denver, Phoenix, Tucson and only 9.5 hours to Dallas.
- ▶ **Rio Metro** is a Dail-a-Ride fare free bus service in Valencia County that provides transaction around the county and into Downtown Albuquerque.

MAJOR AREA EMPLOYERS

EMPLOYER	NO. EMPLOYED
Kirtland Airforce Base	23,000
UNM/UNM Hospital	17,605
Albuquerque Public Schools	14,810
Sandia National Labs	14,220
Presbyterian Healthcare	13,460
Lovelace Hospital	3,500
Central New Mexico Community College	1,870
T-Mobile	2,000
Netflix	1,000
Amazon Fulfillment Center	3,500
Tricore Reference Labs	1,000
Fidelity Investments	900
Meta	400

Source: AREA



Los Senderos

RESIDENTIAL/COMMERCIAL
MASTER-PLANNED DEVELOPMENT

900± ACRES - MULTIPLE TRACTS FOR SALE

LAND SERVICES GROUP

TREVOR HATCHELL

Senior Vice President

+1 505 837 4922

trevor.hatchell@cbre.com

MATT BUTKUS

First Vice President

+1 505 837 4920

matt.butkus@cbre.com

CBRE

6565 Americas Parkway Suite 825
Albuquerque, NM 87110
+1 505 837 4999 | www.cbre.com/abq