

**PROFESSIONAL OFFICE SPACE  
FOR LEASE**



**MODERN WELL MAINTAINED  
22,392 PROFESSIONAL  
OFFICE BUILDING**

**1,400 SF OFFICE SUITE  
AVAILABLE IMMEDIATELY**

**1501 East Main Street  
Meriden, Connecticut**

**Renee Stevens**  
**203.288.1900 x197**  
**[rstevens@presscuzzo.com](mailto:rstevens@presscuzzo.com)**

Press|Cuzzo Commercial Services | 2751 Dixwell Avenue | Hamden, CT 06518  
[www.presscuzzo.com](http://www.presscuzzo.com)

The information above is offered subject to errors, omissions, price change, prior sale, lease or withdrawal from market.



# OVERVIEW

Modern, well-maintained professional office building offers a 1,400 sq ft suite. Ideal for businesses seeking a reliable and efficient workspace. Ample on-site parking and convenient location to major roadways. \$20 per square foot, all utilities included.

**MODERN  
WELL-MAINTAINED  
PROFESSIONAL  
OFFICE SPACE**

## PROPERTY HIGHLIGHTS

- Modern Well-Maintained Building
- 1,400 Square Front Office Suite Available
- 3 Individual offices
- Elevator Service/Handicap Accessible
- Year built: 1988
- \$20 square foot—Full Gross

## PROPERTY SUMMARY

- Ample On-Site Parking
- Zone C-3
- Lot Size: 1.8 Acres
- 22,392 SF Professional Office Building
- Convenient access to I-84
- 3/4 Mile from I-95, Route 15 & Route 691



**Renee Stevens**  
**203.288.1900 x197**

[www.presscuzzo.com](http://www.presscuzzo.com)

The information above is offered subject to errors, omissions, price change, prior sale, lease or withdrawal from market.



# | PHOTOS

MODERN  
WELL-MAINTAINED  
PROFESSIONAL  
OFFICE SPACE



**Press|Cuzzo**  
REALTORS  
Commercial Services

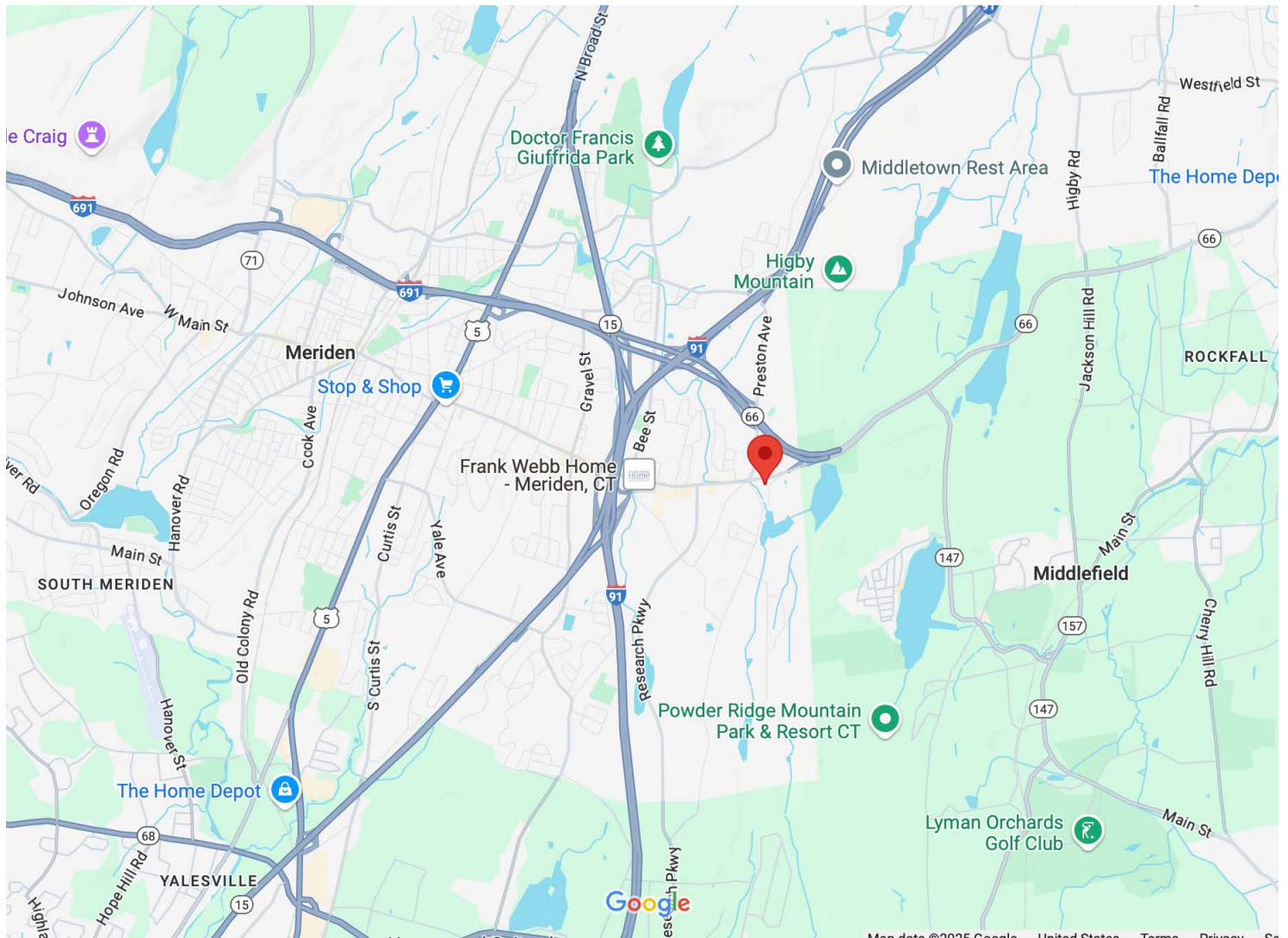
**Renee Stevens**  
**860-964-0205**  
**[rstevens@presscuzzo.com](mailto:rstevens@presscuzzo.com)**

[www.presscuzzo.com](http://www.presscuzzo.com)



# SITE MAP

MODERN  
WELL-MAINTAINED  
PROFESSIONAL OFFICE  
SPACE

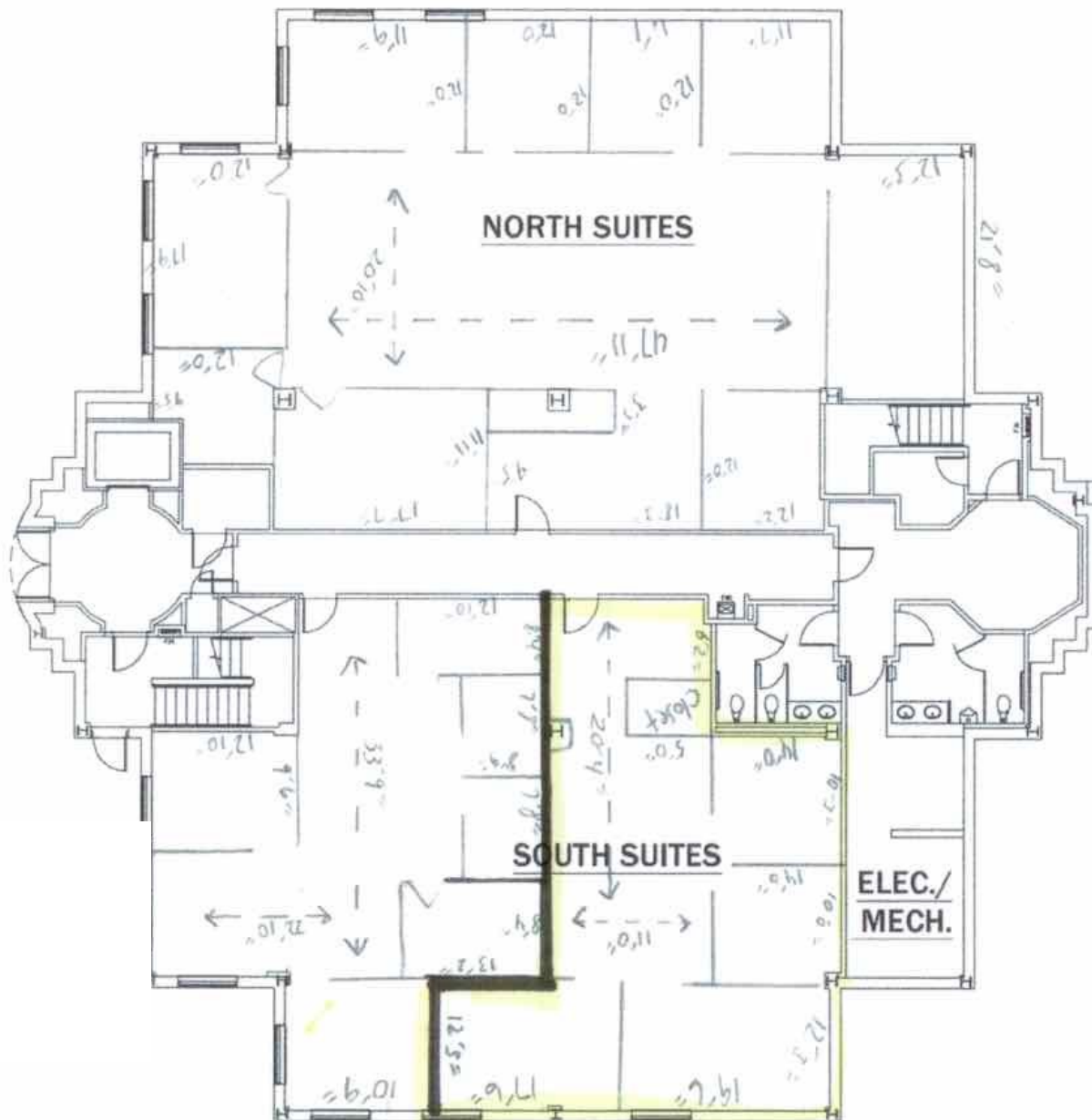


**Press|Cuozzo**  
REALTORS  
Commercial Services

**Renee Stevens**  
**860-964-0205**  
**[rstevens@presscuozzo.com](mailto:rstevens@presscuozzo.com)**



**MODERN  
WELL-MAINTAINED  
PROFESSIONAL  
OFFICE SPACE**



**Renee Stevens**  
**860-964-0205**

[www.presscuozzo.com](http://www.presscuozzo.com)



# **BROKER ASSOCIATE**

Providing Exceptional  
Service to the business  
community for over  
30 years.



**Renee Stevens**  
**rstevens@presscuozzo.com**  
**203.288.1900 x197 Office**  
**860.964.0205 Mobile**

With over 30 years of experience in management, sales, and marketing, I bring a strategic, results-driven approach to commercial real estate. My background includes business ownership and leadership across multiple industries, giving me a strong understanding of what business owners need—especially when it comes to securing the right property to support growth and success.

Whether guiding a new venture or helping an established business expand, I'm passionate about connecting clients with opportunities that align with their vision. It's personally rewarding to help bring those visions to life.

My marketing expertise and local network allow me to craft innovative, effective strategies to sell or lease commercial properties. Clients trust me to go beyond what's expected—delivering results through hard work, creative solutions, and deep market knowledge.

I hold a Commercial & Investment Real Estate Certification (CIREC) and served as the 2023/24 Chairperson of the Commercial and Investment Division (CID) of the New Haven/Middlesex Association of Realtors. As of 2025, I am serving a three-year term on the Board of Directors for the New Haven/Middlesex Association of Realtors.

I am a longtime shoreline resident, currently living in North Guilford and with an office in Hamden—bringing a strong local perspective to every deal.



**Renee Stevens**  
**203.288.1900 x197**

[www.presscuozzo.com](http://www.presscuozzo.com)

The information above is offered subject to errors, omissions, price change, prior sale, lease or withdrawal from market.